



THE IAFSM CURRENT

Illinois Association for
Floodplain and Stormwater Management

Winter 2015-2016 Newsletter

State Supreme Court Ruling: Local Tax Districts not Exempt from Local Stormwater Regulations

In late September, 2015, the Illinois Supreme Court ruled that local tax districts (such as school districts, park districts, levee districts, etc.,) are not exempt from compliance with local stormwater and floodplain regulations.

In 2013, a new set of bleachers were built at Crystal Lake South high school. Neighbors objected to the size and proximity to their homes, and argued that the school did not obtain the necessary permits from the City of Crystal Lake. Community High School District 155 argued that it was exempt and did not have to obtain permits or comply with city zoning laws. The City of Crystal Lake's zoning regulations would have prevented construction of the bleachers as designed, if a permit had been sought.



In a 7-0 vote, the state supreme court ruled against the school district. Part of the ruling read, "As a home rule municipality, the City has the power to regulate land use within its jurisdiction through zoning. There is no statute which exempts school district property from the exercise of the City's zoning laws. Accordingly, we hold that the bleacher construction project undertaken by the Board and the District is subject to the City's zoning and storm water ordinances."

The case is explained in further detail in many newspaper articles and blogs, including:

<http://mchenrycountyblog.com/2015/09/24/d155-loses-bleacher-case-in-illinois-supreme-court/>.

<http://www.chicagotribune.com/news/local/breaking/ct-crystal-lake-bleachers-supreme-court-ruling-met-20150924-story.html>

The full text of the Supreme Court ruling can be found online at:

<http://www.illinoiscourts.gov/Opinions/SupremeCourt/2015/118332.pdf>

Inside This Issue

State Supreme Court Ruling.....	Page 1	AutoCAD Civil3D Seminar	Page 8
Mississippi River Watershed Gets D.....	Page 2	We Need Nominations	Page 9
2016 NFIP Premium Changes.....	Page 3	New FEMA Certificates	Page 9
ESA Compliance Now Required.....	Page 5	Congrats to our New CFMs	Page 10
Floodplain Management Education Videos.....	Page 6	Waterpalooza and Borrow our Water Table	Page 10
Flood Video Game	Page 6	CEC Education & Training Opportunities	Page 11
From the Chair	Page 7	Important Stuff in Every Newsletter	Page 12
Mitigation News	Page 8		

Mississippi River Watershed gets D+ on New Report Card

~Excerpted from Nature.org press release, October 14, 2015

Leaders representing organizations from more than 20 states gathered in St. Louis on Oct. 14 to announce the release of a first-ever Report Card for the entire Mississippi River basin, which stretches across all or part of 31 U.S. states and covers more than 41 percent of the continental United States. The leaders were part of America's Watershed Initiative, which has worked with more than 700 stakeholders and experts from over 400 business, government and science organizations to identify the key measurements and data sources to grade six goals for the watershed: clean, abundant water; marine transportation; flood control and risk reduction; the economy; recreation; and ecosystem health.

Overall, the grade average for the six goals for entire watershed was a D+.

"The rivers and waters in the Mississippi watershed are the life-blood for our nation, our economy and our communities. More than half the services and goods in America are produced with water flowing in this system," said steering America's Watershed committee member Steve Mathies. "Raising the grade for the watershed is critical for our continued economic vitality and that of our children and grandchildren."

Positive results in some of the basins and for some goals across the entire watershed were offset by significant challenges. Specifically, the assessments for transportation, water supply, and flood control and risk reduction received some of the worst grades. Two of the three measurements for transportation—infrastructure condition and infrastructure maintenance—received the lowest grades of all goals measured.

"The report card is not a goal into itself—it's a tool to support a conversation among leaders who are willing to develop and implement shared solutions to the water management challenges facing our states and nation," said Michael Reuter, director of The Nature Conservancy's North America Water Program. "This shared vision will be used to build the partnerships we need to meet these critical management challenges. Knowing what's important and how to measure it is the foundation for us to take collaborative action to improve the watershed."

The Report Card represents the first time these six broad goals have been assessed and presented in a single document for the Mississippi River Watershed. "Goals without measures aren't achieved," said Harald "Jordy" Jordahl, director of America's Watershed Initiative. "The report card helps develop in one place a clear measure of the watershed to focus action."



KNIGHT
Engineers & Architects

Springfield, Illinois
993 Clocktower Drive
Suite A
Springfield, IL 62704
(217) 546-7455

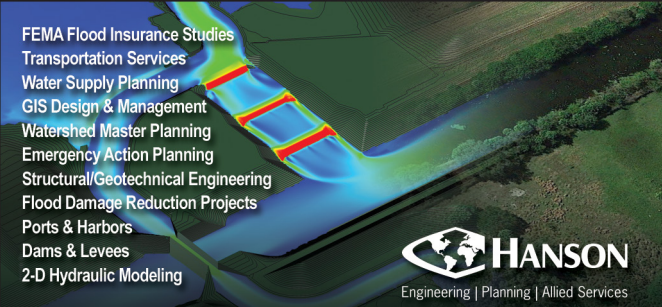
Chicago, Illinois
221 North LaSalle Street
Suite 300
Chicago, IL 60601
Tel: (312) 577-3300


www.knightea.com

Services:
Dams & Levees
Civil/Site Engineering
Transportation Engineering
Structural Engineering
Hydrologic & Hydraulic Modeling
Sustainable Stormwater
CPESC/Erosion Control



FEMA Flood Insurance Studies
Transportation Services
Water Supply Planning
GIS Design & Management
Watershed Master Planning
Emergency Action Planning
Structural/Geotechnical Engineering
Flood Damage Reduction Projects
Ports & Harbors
Dams & Levees
2-D Hydraulic Modeling




Engineering | Planning | Allied Services

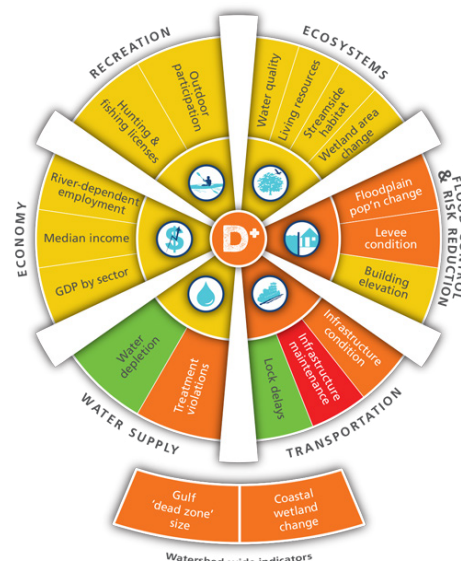
1525 S. Sixth St., Springfield, IL 62703 • (217) 788-2450 • www.hanson-inc.com
Offices Nationwide including Chicago, Tinley Park, Rockford, Peoria, Springfield, Carbondale and St. Louis

Jordahl said the report card results point to three types of action needed for the watershed. First, new investments at state and local levels and from the private sector are needed alongside federal funding to ensure that America's Watershed can provide the critical benefits the nation relies on now and into the future. Next, more collaboration among diverse stakeholders is needed to better connect and target these investments, create long-term partnerships and provide broader multiple benefits for communities, the economy and nature. And lastly, Jordahl said he hopes America's Watershed Initiative will encourage even more engagement throughout the watershed, starting at the local level to produce solutions that can be shared and scaled up across the entire watershed.

For more information, attend the IAFSM Annual Conference in March. America's Watershed Initiative will be one of our featured speakers during the Plenary Session, and will present more information about the Report Card and the challenges and opportunities within the Mississippi River basin.

For the full article, visit <http://www.nature.org/news/features/pressreleases/mississippi-river-basin-gets-d-in-awi-report-card.xml>

The report card can be found at: <http://americaswatershed.org/reportcard/>



2016 NFIP Premium Changes

In a nutshell, on April 1, 2016, the following changes to the NFIP premiums will become effective:

- Premium rate for flood insurance for certain properties newly mapped into floodplains shall for the first policy year be a “preferred risk premium” for the property, and shall be increased at no more than 15 percent by class, or 18 percent per policy, until a full-risk premium is achieved.
- Pre-FIRM subsidized non-residential (business) properties will see a 25% annual premium increase.
- Pre-FIRM Subsidized Policies (AE Zones)
 - » Primary Residences: The combined premium increase for all primary residence policies in these zones is 5 percent, with a total increase of 5 percent.
 - » Non-Primary Residences (secondary homes): The combined premium increase for non-primary residence policies in these zones is 24 percent, with a total increase of 21 percent.
- A Zones (non-velocity zones, which are primarily riverine zones)
 - » Post-FIRM A1-A30 and AE Zones: Premiums will increase 9 percent, with a total increase of 8 percent.

Passion.
Commitment.
Success.

Offices in
Chicago & Hoffman Estates

www.arcadis-us.com
Imagine the result



 **ARCADIS**



Flood Break
REVOLUTIONARY FLOOD CONTROL

- » AO, AH, AOB, and AHB Zones (shallow flooding zones): Premiums will increase 4 percent, with a total increase of 4 percent.
- Unnumbered A Zones (remote A Zones where elevations have not been determined): Premiums will increase 13 percent, with a total increase of 12 percent.
- A99 Zones (i.e., flood protection systems still in the process of being constructed) and AR Zones: Premiums will increase 4 percent, with a total increase of 4 percent.
- X Zones (zones outside the Special Flood Hazard Area)
 - » Standard-Rated Policies: Premiums will increase 3 percent, with a total increase of 3 percent.
 - » Preferred Risk Policies (PRPs) (policies on buildings that are currently mapped outside the SFHA): Premiums will increase an average of 5 percent, but overall the average amount charged these policyholders will increase 4 percent.

For more information, visit <http://www.nfipiservice.com/Stakeholder/pdf/bulletin/w-15063.pdf>.



ENGINEERING RESOURCE ASSOCIATES, INC.
 Consulting Engineers, Scientists & Surveyors
www.eraconsultants.com

ERA specializes in:

- water resources
- transportation
- infrastructure
- structural design
- structural inspection
- site development
- environmental services
- recreation
- construction management
- surveying and mapping





CONTACT US:
630.393.3060
Warrenville | Chicago | Champaign



Design with community in mind



Municipal Infrastructure Solutions
 312.262.2300
stantec.com

135 South LaSalle Street, Suite 3100
 Chicago, IL 60603

Community Land Services, LLC

**FEMA HMGP & HUD Property Buyout Programs
 Acquisition & Implementation**

Jack Petersen, Owner, Senior Agent

SR/WA, R/W-NAC, R/W-RAC, IL Managing Broker

847-529-3762 / Jack.Petersen@land-services.us



SUSTAINABLE SOLUTIONS FOR YOUR WATERSHED

- Stormwater & Floodplain Management
- Hydrologic & Hydraulic Modeling
- Local Flooding Assessments & Retrofits
- Ecological Management of Storm Basins



- Watershed Planning
- Water Quality & BMP Design
- CPESC/Erosion Control Expertise
- Value Engineering
- Constructability Reviews
- Grant Application Assistance

www.v3co.com/NR

FOR IDEAS TO MAKE YOUR JOB EASIER, SIGN UP FOR V3's NATURAL RESOURCES INSIGHTS NEWSLETTER AT www.v3co.com/signup.html

Hey and Associates, Inc.

Stormwater & Floodplain Management
 Civil Engineering Design
 Wetland Delineation & Mitigation
 Ecological Restoration & Management
 Water Quality & Lake Management
 Landscape Architecture
 Regulatory Permitting

heyassoc.com 847.740.0888



ILLINOIS
 Volo
 Chicago

WISCONSIN
 Milwaukee

ESA Compliance Now Required Prior to CLOMR Processing

The Federal Emergency Management Agency (FEMA) is responsible for complying with the Endangered Species Act (ESA) when it processes Conditional Letters of Map Revision (CLOMRs) or CLOMR-Fs (with Fill) for floodplain development projects in Special Flood Hazard Areas.

As part of the CLOMR application process, FEMA asks applicants to ensure that Endangered Species Act compliance has been achieved prior to submitting their CLOMR applications. FEMA's Procedure Memorandum 64 states "The CLOMR-F or CLOMR request will be processed by FEMA only after FEMA receives documentation from the requester that demonstrates compliance with the ESA."

Region 3 of the U.S. Fish and Wildlife Service developed a web site to help project proponents navigate this process and determine if their projects "may affect" listed species. CLOMR applicants in FWS can go to the section 7 Technical Assistance webpage

(<http://www.fws.gov/midwest/endangered/section7/s7process/step1.html>) and follow the step by-step process.

It is anticipated that many of the CLOMR projects will not affect listed species. Thus, the U.S. Fish and Wildlife Service further developed a process on the website to assist applicants in quickly assessing whether their project will have "no effect" or "may affect". This part of the step by step process is streamlined specifically for evaluating CLOMR projects http://www.fws.gov/midwest/endangered/section7/no_effect/fema3.html and will help applicants determine if their project meets the criteria for a "no effect" determination.

For projects that will have no effect, the final step of the process is to fill out and print the determination so that it can be included with the CLOMR application to FEMA. "No Effect" determinations from the Region 3 website will be accepted as documentation of compliance with the ESA and will not require applicants to contact individual U.S. Fish and Wildlife Service Ecological Services Field Offices.

For projects that do not meet the "no effect" criteria, applicants are encouraged to continue with the step by step process and utilize the tools available on the website to evaluate projects before contacting the U.S. Fish and Wildlife Service for review.



HRGreen **CLEAN WATER IS EVERYBODY'S BUSINESS.**

For over 100 years, HR Green has tackled water challenges with a careful business approach and at every step of the journey: design, construction, ownership and operation.

THE WOODLANDS NEIGHBORHOOD
Village of Hinsdale, Illinois

Aurora | Evanston | McHenry | New Lenox | Yorkville
Toll Free 800.728.7805 | Learn more at HRGreen.com

TRANSPORTATION | WATER | GOVERNMENTAL SERVICES
SENIOR LIVING | ENERGY | LAND DEVELOPMENT



DANIEL CREANEY COMPANY
CONSULTING CIVIL ENGINEERS

STORMWATER AND FLOODPLAIN MANAGEMENT
LAND SURVEYING
MUNICIPAL ENGINEERING
LAND DEVELOPMENT
RAVINE RESTORATION
ATHLETIC FIELDS & FACILITIES

450 Skokie Boulevard, Suite 105
Northbrook, IL 60062
847-480-5757
www.dcreaneyco.com

Serving the Chicagoland area since 1976



CMT

Crawford, Murphy & Tilly

550 North Commons Drive, Ste 116
Aurora, Illinois 60504
cmtengr.com

Engineers and Consultants

PHONE 630.820.1022
FAX 630.820.0350
FREE 844.4CMTENG
www.cmtengr.com

Floodplain Management Education Videos

~Steve Samuelson, Kansas Dept. of Agriculture

Excerpted and reprinted with permission from ASFPM and Kansas Dept. of Agriculture's October 2015 Floodplain Management Tips newsletter

The Floodplain Management & Dam Safety Program of the Iowa Department of Natural Resources partnered with Iowa State University Extension & Outreach to create a set of videos about floodplain management. One set of videos has been scrubbed of Iowa specific content so that it will be appropriate for any state. Find the videos here: www.extension.iastate.edu/floodingandnfp/content/flooding-and-national-flood-insurance-program.

Videos cover topics of introduction to the National Flood Insurance Program (NFIP, Understanding Flooding, Floodplain Mapping, Floodplain Regulation, and Flood Insurance). Topics are broken up into short videos; most are about 5 minutes, and can be easily watched as you have time.

There are 20 short videos. Each has excellent information that is well presented. The videos are an excellent way for people to learn about floodplain management without leaving their home or office. Some videos on flood mapping may be good to use for a community getting a new flood map. Video 20, about the Community Rating System would be a good video to link on a community website when they've applied for CRS.

The videos discuss the basic requirements for floodplain management that apply anywhere, but some states and communities may require higher standards than the NFIP so viewers are encouraged to consult their local ordinance and their State Floodplain Manager (NFIP Coordinator).



Flood Video Game for Community Resilience

~Reprinted with permission from ASFPM

Looking for a fun way to get prepared? The Koshland (Washington, D.C.) Science Museum's Extreme Event interactive game is now available. Extreme Event: River City uses the same core elements of Extreme Event: Coastal City, while featuring a new storyline, a new disaster type, and enhanced challenges. Both games are geared toward community groups and schools, and give players a taste of what it takes to build community resilience.

Extreme Event: River City features a mid-sized community built near two converging rivers surrounded by farmland. As a series of storms hit the city, the rivers flood. Players must respond to the flood threat and prioritize recovery efforts. Download Extreme Event: River City free. <https://www.koshland-science-museum.org/explore-the-science/extreme-event/about-extreme-event-game>.



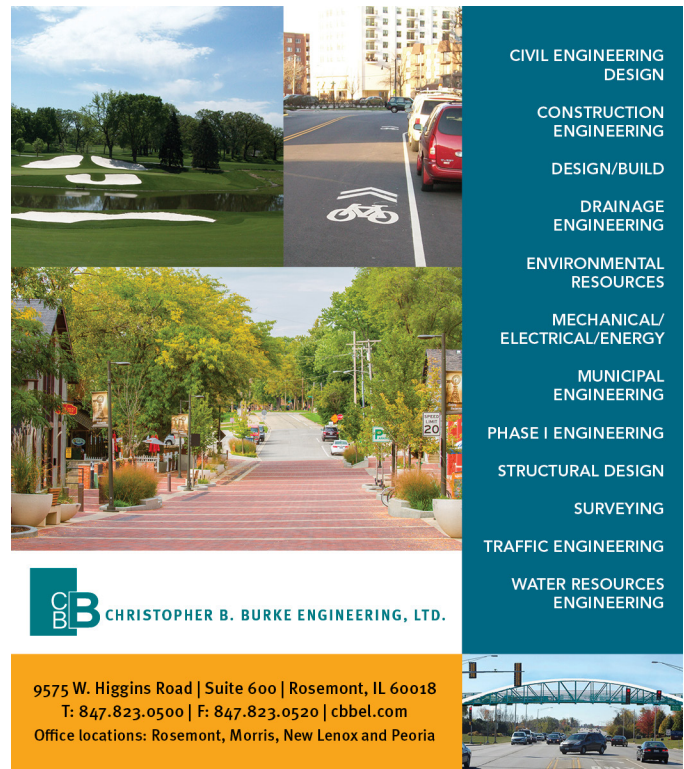
From the Chair

~Guest Columnist: Erik Gil, P.E., CFM, Christopher B. Burke Engineering, Ltd, IAFSM Treasurer

As we end a busy 2015 and start the new year, we hope you are looking ahead towards new challenges as a source of encouragement, and looking behind at things you have accomplished and are thankful for. I would like to highlight three things that fall under either one of these categories. About a month ago, the IAFSM Board and Committee Chairs met to review the abstracts that were submitted for our upcoming annual conference to be held March 9-10 at the Tinley Park Convention Center. All of the preparatory work ahead of that meeting was done primarily by our Conference Chair, Glenn Heistand, who received significant support from the committee chairs and our executive secretary. We received almost 70 abstracts, but regretfully could only accept 50 due to the limited number of track slots available in a 2-day conference. We have been fortunate that during the past 5 years or more, we've received many more abstracts than we can present, as well as covering interesting topics that many of us don't typically run into during the course of our daily work. A few years ago, in recognition of the increased abstract submittals, the Board increased the number of concurrent tracks. This allowed for more content to be available to our attendees and more opportunities for presenters. There used to be a time when the Board had to contact its members to request abstracts to be able to fill our concurrent tracks. That's not the case these days. We are very grateful that so many of our members attend the conference and are willing to share their work experiences. We hope this will continue every year.

This year IAFSM will co-host the national ASFPM annual conference with our neighbors, the Michigan Stormwater-Floodplain Association, which will take place in Grand Rapids, Michigan, on June 19-24. Spearheading IAFSM efforts is Amanda Flegel. Amanda has represented IAFSM during conference calls and meetings and coordinated involvement from IAFSM board members and organizations. IAFSM participation as a co-host for the national conference provides benefits for IAFSM members to participate in a national conference highlighting regional issues within a few hours' drive. IAFSM members will be eligible for the ASFPM member conference fee, and Illinois local officials will receive a further reduced conference rate.

One of the new features that will be introduced at the national conference is "memorabilia-on-demand" through a website dedicated to selling the shirts and other garments and items that were typically sold at a booth at the conference. As you know, IAFSM also has sold personalized polo shirts with our logo at our conferences at the check-in desk, but we are



CIVIL ENGINEERING DESIGN

CONSTRUCTION ENGINEERING

DESIGN/BUILD

DRAINAGE ENGINEERING

ENVIRONMENTAL RESOURCES

MECHANICAL/ELECTRICAL/ENERGY

MUNICIPAL ENGINEERING

PHASE I ENGINEERING

STRUCTURAL DESIGN

SURVEYING

TRAFFIC ENGINEERING

WATER RESOURCES ENGINEERING

CB B CHRISTOPHER B. BURKE ENGINEERING, LTD.

9575 W. Higgins Road | Suite 600 | Rosemont, IL 60018
T: 847.823.0500 | F: 847.823.0520 | cbbel.com
Office locations: Rosemont, Morris, New Lenox and Peoria



GHA GEWALT HAMILTON ASSOCIATES, INC.

CONSULTING ENGINEERS

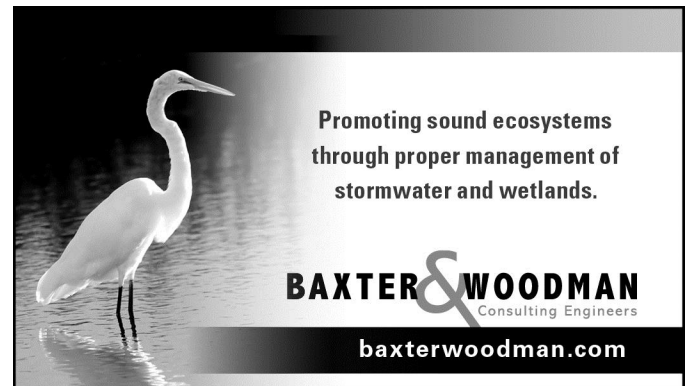
Civil Engineering
Municipal Engineering
Traffic Engineering
Site Design/Development
Roadway Design
Construction Administration
Signal Coordination and Timing
Transportation Planning
Surveying/High Definition Scanning
Stormwater Management
Geographic Information Systems
Environmental Consulting

Vernon Hills, IL • Chicago, IL • Columbia, MO
www.gha-engineers.com

considering using the same vendor as will be used in the national conference to offer similar items but with IAFSM logos. The link to this website is <https://asfpm.itemorder.com/sale>. We urge our members to visit this website link and provide us feedback if this is something that you would like us to offer as part of our conference. The memorabilia items will only be available to order during the registration process via the webstore, and be picked up at the conference. These items would not be available to sell during the conference. Given that the vendor will want all orders in about 4 weeks ahead of our conference, we are requesting feedback from our members by January 20 regarding this possibility. Please send your suggestions to egil@cbbel.com.



Finally, IAFSM will be offering a free mobile app to all 2016 annual conference attendees to supplement and enhance the normal printed materials. This will be the first time IAFSM has offered this technology. The app is specifically designed to add value to the conference experience. When attendees are back at the office, the app becomes a powerful tool to quickly recall, implement or share the conference experience with others. The conference evaluation will also be completed through the app. Glenn brought this idea to the Board and has done all of the legwork to make this happen. We are encouraging every member to take advantage of this mobile device technology which upgrades the conference experience. More details will be available at the conference and will also be sent before the conference to those attending. We hope to see everyone in Tinley Park, March 9-10.



Mitigation News: Peoria County to Buy Properties Affected by 2013 flood

~Brian Eber, CFM, IDNR

Soon, a bit more than \$3 million could be used to buy out up to 40 properties ravaged by the 2013 floods. In December, the Peoria County Board approved a grant agreement from the Illinois Emergency Management Agency that will give the county a chance to buy the properties, 20 from Edwards and 20 from unincorporated Peoria County. The 20 parcels in unincorporated Peoria County are mostly in the Rome area with several properties being on North River Beach Drive, which has seen significant flooding in recent years.

AutoCAD Civil3D Seminar

IAFSM is hosting a 3-day Civil 3D seminar, taught by Advanced Solutions on February 16-18, 2016 in Woodridge, IL. This seminar will provide basic Civil 3D training as well as specific training on the stormwater management capabilities of the software. This hands-on training will include:

1. Civil 3D Fundamentals,
2. River and Flood Analysis, and
3. Storm and Sanitary Analysis

Please register early at <https://www.123signup.com/register?id=pyfmk>, as space is limited. Additional sessions of this seminar may be provided, if needed. Contact Shauna Urlacher, Stormwater Management Committee Chair, at surlacher@v3co.com with any questions or to be placed on a waiting list for the next offering of this seminar.

We Need Nominations!

Once again, it is your opportunity to recognize the best. **The deadline has been extended to January 29th!**

The nomination submittal must include the information below and email (or mail) it, along with 1 copy of any supporting materials such as handbooks, videotapes, letters of support by January 29th, 2016 to:

Sarah Hunn, IAFSM Awards Chair
Sarah.hunn@dupageco.org
421 North County Farm Rd
Wheaton, IL 60187

The awards categories are:

Floodplain Manager of the Year

Recognizes outstanding individual efforts and contributions at the local level.

Outstanding Service

Awarded to an IAFSM officer, a Federal, State, or Local Official, or a consultant who has gone above and beyond normal expectations and duties to promote or encourage IAFSM goals.

Stormwater Management

Awarded to an individual or group who have improved stormwater management or reduced urban flood risks through creative engineering, regulatory measures, or other approaches.

Mitigation

Given to an individual or community that has encouraged flood hazard reduction through a buyout program, retrofitting, preparation of a mitigation plan, or other similar mitigation efforts.

Journalism or Public Outreach Award

Given to a media outlet that has produced floodplain or stormwater management special features during the year. The award can include individuals or agencies who have contributed to outreach and public awareness of floodplain or stormwater management issues.

Legislation

Honors Illinois law makers or local officials for their efforts in floodplain issues. The award can also be given to an individual who makes extraordinary efforts to encourage the passage of legislation or to a community that has adopted unique local regulations that promote floodplain management or flood damage reduction.

Youth Award

This award is given to a student or student group (K-12) for outstanding efforts in leadership or education of floodplain or Stormwater Management issues. (does not need to be a member of IAFSM)

Lifetime Achievement

This award is the IAFSM's highest honor. It is reserved for outstanding longtime floodplain managers. These individual's long-term contributions have made a noticeable impact on floodplain and stormwater management efforts in the State of Illinois. This award is not always given on a yearly basis.

The awards committee may request additional information to support any submittal. The awards committee will review and vote on each nominee. Awards will be presented during the Annual Conference awards luncheon on March 10th.

New FEMA Elevation and Floodproofing Certificates

FEMA has updated the Elevation Certificate and Floodproofing Certificate forms. Both forms have grown in size and complexity. To view the announcement and access the new forms, visit the NFIP service center at: <http://nfipiservice.com/Stakeholder/pdf/bulletin/w-16002.pdf>

Congrats to our New CFMs!

Congratulations to everyone who passed the exam and became a Certified Floodplain Manager in the State of Illinois in 2015!

Bruno Athmanathan, Illinois Dept. Natural Resources
Clayton Ballerine, Illinois State Water Survey
Michael Behary, McLean County, IL
Heather Bishop, USACE, Rock Island Dist.
Greg Boehm, Stanley Consultants, Inc.
Nathan Bottom, City of Springfield, IL
James Bullard, Village of Morton, IL
Jeffery Bumgarner, City of LaSalle, IL
Joshua Cackley, USACE, Rock Island Dist.
James Chambers, Chastain & Associates, LLC
Juli Crane, Lake County, IL
Cindy Cregmiles, Jersey County, IL
Robert Culp, Midwest Engineering Associates, Inc.
Mary DeBacker, Parsons Brinckerhoff, Inc.
Rodney Delp, USACE, Rock Island Dist.
Sonda Delpalazzo, Village of Carpentersville, IL
Michael Dirkse, V3 Companies
Richard Fisher, MWRDGC
Brian Frank, Lake County, IL
James Frankenhoff, Adams County, IL
Thomas Heavisides, City of Springfield, IL
Anthony Heddlesten, USACE, Rock Island Dist.
Charles Jackson, MWRDGC

Kent Johnson, City of Elmhurst, IL
Thomas Kulasik, Grundy County, IL
Julie Lomax, Village of Downers Grove, IL
John McNelis, Cook County, IL
Fred Moore, LaSalle County, IL
Jon Oliphant, City of Washington, IL
Jeremy Palm, City of Streator, IL
Matthew Palys, W.T. Civil Engineering, LLC
Susan Quasney, Village of Downers Grove, IL
Joe Ragle, Mason County, IL
Lee Rivera, Atlas Engineering Group, Ltd.
Jason Rix, City of Marseilles, IL
Sarah Runger, Hey & Assoc., Inc.
Holly Sauter, MWRDGC
Anthony Spinelli, Strand Assoc., Inc.
Helen Sterr, Cook County, IL
Evan Stewart, USACE, St. Louis Dist.
Emily Szeszycki Allen, Solutient Corp.
Paresh Thakkar, EJM Engineering, Inc.
Mark Weber, Smith LaSalle Consulting Engineers
Alethya Yu-Janicki, Singh & Assoc., Inc.
Colby Zemaitis, City of Wilmington, IL

Waterpalooza and Borrow our Water Table!



IAFSM participated in WEFTEC's Waterpalooza Event in September by displaying the IAFSM Water Table at the event. 800 children from many different Chicago elementary schools attended the event and stopped at IAFSM's booth to learn about Stormwater Management in a hands-on interactive way. Throughout the day, Diane Bouckaert from Manhard Consulting and Mark Hoskins from Michael Baker International, Inc. taught the students about weather, floodplain management, and the concept of detention.

The Water Table is a great hands-on tool for teaching students about the effects of development on watersheds, and a wonderful introduction to sustainable floodplain management concepts. The IAFSM has two Water Tables available for members to borrow free of charge. The Tables come with a suggested lesson plan that is tailored to different age groups from about Third Grade all the way through High School. Contact

Sarah Harbaugh, IAFSM's Executive Secretary to reserve a Table today!

CEC Education & Training Opportunities

Looking for training opportunities? The following opportunities are coming up in the next few months. If you are looking for credits, be sure to review the material and confirm they meet the appropriate requirements.

IAFSM Sponsored Training Opportunities:

- The IAFSM annual conference is just around the corner! Save March 9-10, 2016 on your calendar. The conference will be held at the Tinley Park Convention Center in Tinley Park, IL. See our website at www.illinoisfloods.org for updates.
- 3-day Civil 3D seminar, taught by Advanced Solutions on Feb 16-18, 2016 in Woodridge, IL. Basic Civil 3D training as well as specific training on the stormwater management capabilities of the software. Register at <https://www.123signup.com/register?id=pyfmk>

Additional Training Opportunities:

- EMI provides a wide range of training opportunities and upcoming training. EMI courses are free for local and state government employees. Learn more at the EMI website: <http://training.fema.gov/EMI/>

Upcoming courses include:

- » March 7-10, June 27-30, Sept 12-15: EMI - E0273 Managing Floodplain Development through the National Flood Insurance Program
- » April 11-14: EMI - E0194 Advanced Floodplain Management Concepts
- » April 18 – 21: EMI - E0278 National Flood Insurance Program/Community Rating System
- » July 1-4: EMI-E0282 Advanced Floodplain Management Concepts II
- » Aug 29 – Sep 1: EMI-E0284 Advanced Floodplain Management Concepts III

Webinars/ Online:

- Association of State Floodplain Managers (ASFPM) <http://www.floods.org/n-calendar/webinars.asp>
 - » National conference June 19-24, Grand Rapids, MI

Helping our clients
realize their visions

AECOM is proud to be a Silver Sponsor of the
Illinois Association for Floodplain and Stormwater
Management 2015 Conference.

www.aecom.com

AECOM



Important Stuff We Tell You in Every Newsletter...

Save the Dates! 2016 IAFSM Conference and National Conference

The 2016 Annual Conference will return to Tinley Park and be held Wednesday and Thursday, March 9 and 10, 2016, at the Tinley Park Convention Center. The 2016 National Conference will be held in our region next year, on June 19 – 24 in Grand Rapids, Michigan.

Wanted: Newsletter Ideas and Articles

IAFSM members, this is YOUR newsletter! Email Jennifer Maercklein, editor, at jmaercklein@v3co.com if there are topics that you'd like us to cover. You don't need to write the article - we just want your ideas! If you're gifted with a pen and would like to provide content, we welcome your written contributions as well.

Get Involved with IAFSM!

IAFSM Committee Chairs welcome your help and involvement. See the list of chairs on the last page of this newsletter, or visit the committee webpage to learn more about volunteer opportunities. <http://www.illinoisfloods.org/committees.html>

Borrow our Water Table

IAFSM has two Watershed Tabletop Models available for all members to check out (free of charge) and bring to Public Works Open Houses, Scout meetings, 4-H meetings, school classrooms, etc. This offers a great opportunity to educate about the dangers and impact of unplanned development and human activity in the floodplain. IAFSM keeps one in Springfield and the other in northeast Illinois. Contact Sarah at IAFSM@illinoisfloods.org to make arrangements.

Next Board Meetings

The next two IAFSM Board Meeting will be held on January 13 at 10:00 a.m. at Ottawa City Hall, 301 W. Madison St; and March 10 at 7:30 a.m. (time tentative) at the Tinley Park Convention Center. All members are welcome and encouraged to attend Board meetings. See you there!

Jobmart

Visit our Jobmart at <http://www.illinoisfloods.org/jobmart.html> Jobmart is a free service to members of IAFSM. If you would like to post a position, send complete information to IAFSM@sbcglobal.net.

2016 CFM Exam Schedule

To view 2016 exam dates and register, visit www.illinoisfloods.org/certification.html.

BLECK

engineers | surveyors

Patrick J. Bleck, P.E.

Bleck Engineering Company, Inc

1375 North Western Avenue Lake Forest, Illinois 60045

T 847.295.5200 M 847.343.9955 E pbleck@bleckeng.com



THE IAFSM CURRENT

Illinois Association for
Floodplain and Stormwater Management

Winter 2015 - 2016 Newsletter

The IAFSM Newsletter is published quarterly for members of the Illinois Association for Floodplain and Stormwater Management. Information and opinions contained herein do not necessarily reflect the views of all members. Items for publication and other editorial matters should be directed to the editor at jmaercklein@v3co.com.

IAFSM OFFICERS and COMMITTEE CHAIRS

CHAIR

E. Stuart Richter, CFM
Whiteside County
srichter@whiteside.org

TREASURER

Erik Gil, P.E., CFM
Christopher B. Burke Eng., Ltd.
egil@cbbel.com

PAST CHAIR

Loren Wobig, P.E., CFM
IDNR/Office of Water Resources
Loren.wobig@illinois.gov

VICE CHAIR

Glenn Heistand, P.E., CFM
Illinois State Water Survey
heistand@illinois.edu

SECRETARY

Stephen Altman, P.E., CFM
Hanson Professional Services
Saltman@Hanson-inc.com

EXECUTIVE SECRETARY

Sarah Harbaugh
IAFSM@illinoisfloods.org

CONFERENCE

Glenn Heistand, P.E., CFM
Illinois State Water Survey
heistand@illinois.edu

EDUCATION OUTREACH

Diane Bouckaert, P.E., CFM
Manhard Consulting Ltd
dbouckaert@manhard.com

NEWSLETTER

Jennifer Maercklein, P.E., CFM
V3 Companies of Illinois
jmaercklein@v3co.com

BOARD NOMINATIONS

Mark Hoskins, P.E., CFM
Michael Baker International
Mark.Hoskins@mbakerintl.com

FLOODPLAIN MANAGEMENT

Mike Sutfin, CFM
City of Ottawa
msutfin@cityofottawa.org

STORMWATER MANAGEMENT

Shauna Urlacher, P.E., CFM
V3 Companies of Illinois
surlacher@v3co.com

AWARDS

Sarah Hunn, P.E.
DuPage Co Stormwater Mgmt
Sarah.Hunn@dupageco.org

INTER-ORGANIZATIONAL

Amanda Flegel, P.E., CFM
Illinois State Water Survey
aflegel@illinois.edu

WETLANDS

Tom Kehoe
Christopher B. Burke Eng., Ltd.
tkehoe@cbbel.com

CERTIFICATION

Matt Wahl, CFM
Peoria County
mwahl@peoriacounty.org

LEGISLATIVE

Kay Whitlock, P.E., D.WRE
Christopher B. Burke Eng., Ltd.
kwhitlock@cbbel.com

YOUTH OUTREACH

Brian Chaille, P.E., CFM
Illinois State Water Survey
bchaille@illinois.edu

COMMUNITY RATING SYSTEM

Vacant

MITIGATION

Brian Eber, CFM
IDNR/Office of Water Resources
Brian.Eber@illinois.gov

ILLINOIS ASSOCIATION FOR FLOODPLAIN AND STORMWATER MANAGEMENT

35W749 Bluff Drive, St. Charles, Illinois 60175

IAFSM@IllinoisFloods.org Phone: 630-443-8145 Fax: 630-443-8198

For current Job Postings and CEC Training Opportunities, visit our website at www.illinoisfloods.org