



# The Illinois River

Floodplain restoration











An aerial photograph of the Chautauqua National Wildlife Refuge. The image shows a large, irregularly shaped body of water, likely a reservoir or a series of connected ponds, surrounded by a mix of land. To the left, there are green agricultural fields and a dirt road. To the right, there is a dense forest of bare trees, suggesting a late autumn or winter setting. In the background, more fields and some distant buildings are visible under a hazy sky. The text "Chautauqua National Wildlife Refuge" is overlaid in white in the lower-left quadrant.

# Chautauqua National Wildlife Refuge



























# The Rebirth of Emiquon





























Fast Forward  
about  
a Dozen Years



















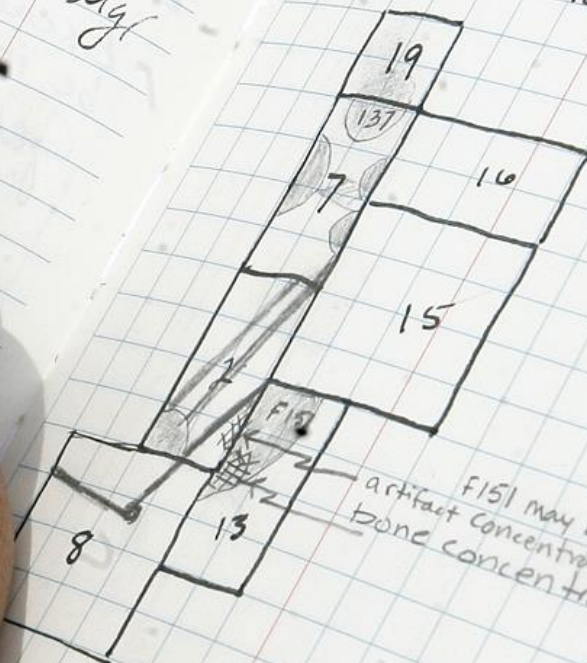


SQ 12 / F152

removed couple plain large  
shells, Rock,

in L02

STRUCTURE 14 - (57)



F151 may be basin  
artifact concentration  
bone concentration

A

151





Starved Rock State Park

















Sanganois State Fish and Wildlife Area

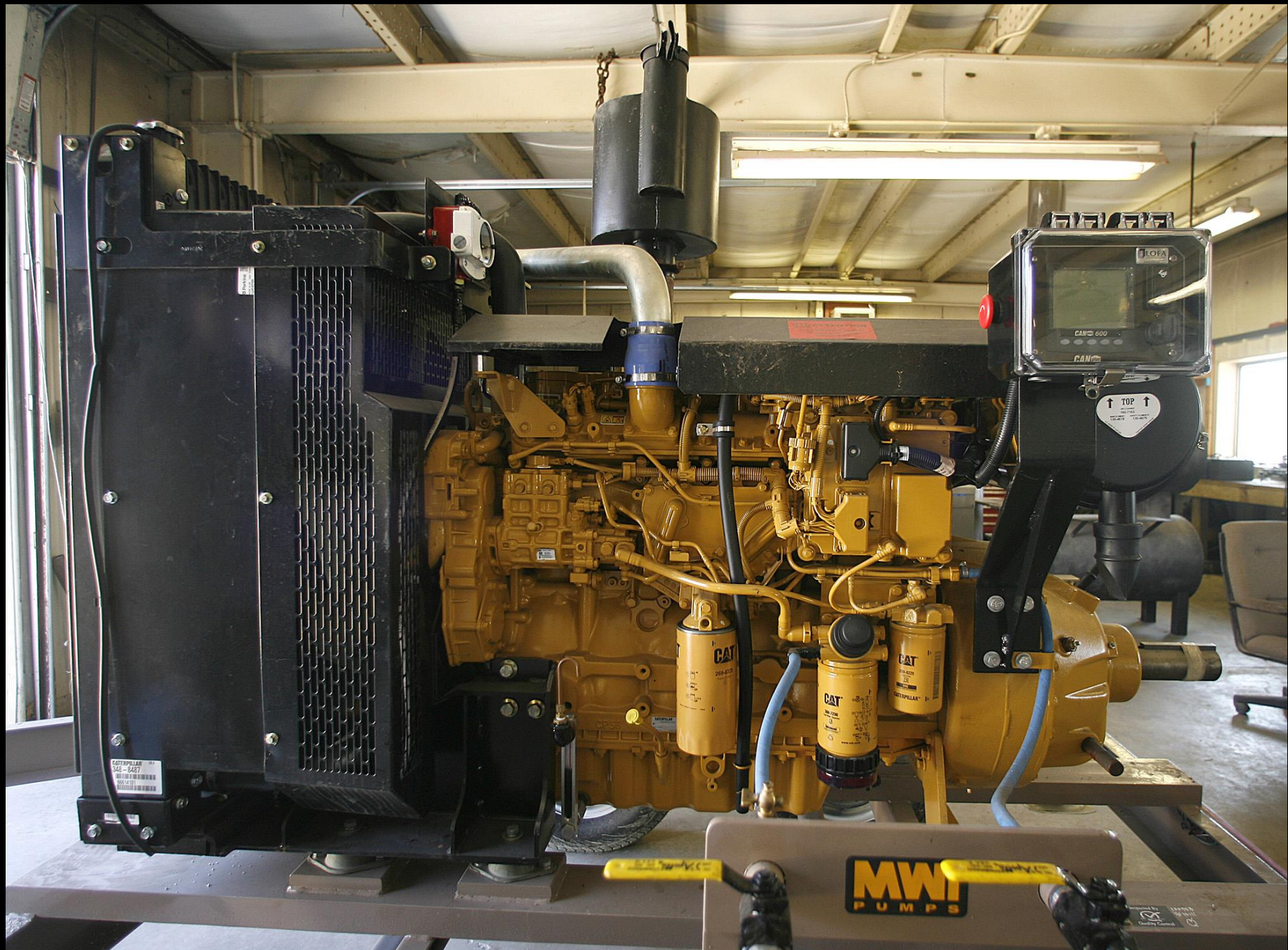


















Spunky Bottoms















# Floodplain Restorations:

- Provide Recreational Opportunity
- Provide Wildlife Habitat
- Harbor Declining or Endangered Species



















*Questions?*

