

THE IAFSM CURRENT

Illinois Association for
Floodplain and Stormwater Management

Spring 2012 Newsletter

2012 Conference Recap

What a great conference! Each new Conference Chair brings tweaks and changes to our annual conference, always for the better, and this year was no exception. Loren Wobig championed the idea of including Field Tours at the conference, and they were a great success. If you missed them, you missed a fun opportunity to see some interesting projects designed by your colleagues (not to mention the chance to spend an afternoon outside in the rare 80-degree March sunshine!)

Over sixty people attended two “sold-out” tours of the O’Hare airfield, getting the opportunity to see construction projects that are a part of the O’Hare Modernization Program (OMP) as well as O’Hare Water Resources facilities, such as the South Detention Basin, Bensenville Ditch, and Willow-Higgins Creek relocation. The tour was led by Jim Chilton, OMP-PMO Program Manager.

Nearly eighty people attended two Flood Mitigation tours that showcased nearby water resource projects, including Methodist Campground Mitigation, Tollway Bio-Swales, Rand Park /Levee 50 Pump Station and Levee/Floodwall System in Des Plaines, and Levee 37 Floodwall and Gates. The tour of each project was led by its respective project manager or owner.

The traditional aspects of our annual conference were quite successful, too. IAFSM offered several workshop tracks with a wide range of topics including case studies, modeling, planning, and regulatory updates. Over 500 members attended 48 workshops and visited with 23 exhibitors in the bright, airy conference space at the InterContinental Hotel in Rosemont.



*Top: 500 people attended the conference.
Middle and bottom: Over 60 members toured
the O’Hare expansion project.*

2012 award winners can be found in this newsletter; photos and presentations will soon be online.

Inside This Issue

2012 Conference Recap.....	Page 1
2012 IAFSM Awards & Recognition...	Page 2
Annual Conference Sponsors.....	Page 6
Cook Cnty Stormwater Mapping App..	Page 7
Changes to FEMA Appeals Process.....	Page 8
From the Chair	Page 9
Save the Date: 2013 Conference.	Page 10
Wanted: Newsletter Ideas & Articles	Page 10

Newsletter Delivery Method.....	Page 10
Get Involved with IAFSM.....	Page 10
Floodplain Mgmt Committee News ...	Page 10
Free CECs from FEMA.....	Page 10
Borrow our Water Table.....	Page 11
Next Board Meeting	Page 11
Jobmart.....	Page 11
2012 CFM Exam Schedule.....	Page 11

2012 IAFSM Awards and Recognition

~IAFSM Awards Committee: David Schein, Ron Davis, Stu Richter, Scott Cofoid, Brian Eber, Paul Osman

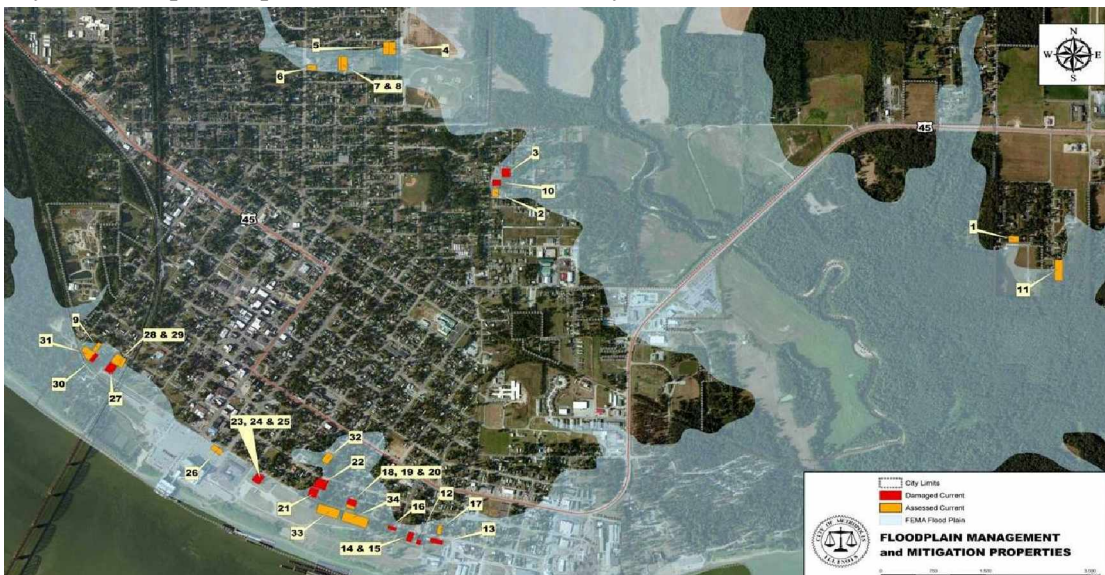
A highlight of every annual conference is the IAFSM Awards Luncheon. It is the time when IAFSM members show their appreciation for coworkers and colleagues who have gone above-and-beyond the call of duty. In Rosemont, eight awards were presented.

Floodplain Manager of the Year Award: City of Metropolis

This award recognizes outstanding individual efforts and contributions at the local level. The award honors an individual responsible for the development of a distinguished local program or activity, or someone who struggles to implement flood hazard reduction at the local level in the absence of sophisticated programs and support.

The 2012 award goes to City of Metropolis, Superman's hometown. Located along the Ohio River, Metropolis has a long history of flooding. 2011 was a record year for flooding but it could have been much worse.

Metropolis has been very proactive over the years to reduce flood losses. After the 2011 flood, the City quickly completed damage assessments. City employees Chad Murray and Kathy Benard tagged buildings, helped citizens find alternative housing, and plotted each loss on GIS complete with documentation and elevations. They were the first flooded community to submit an application for mitigation funding (which has since been approved by the state and is awaiting FEMA approval). They conducted floodproofing and reconstruction workshops for citizens. Using 100% City funding, they purchased many flood prone structures in town. By this time next year, Metropolis expects to have eliminated nearly all of their flood risk.



Map of floodplain mitigation in the City of Metropolis, Illinois

Aviation
Highways & Bridges
Water & Wastewater
Land Development

Office Locations
Springfield, IL
Aurora, IL
Chicago, IL
Columbus, OH
Edwardsville, IL
Indianapolis, IN
Peoria, IL
Rockford, IL
St. Louis, MO



CMT
CRAWFORD, MURPHY & TILLY, INC.
CONSULTING ENGINEERS

550 North Commons Drive, Suite 116
Aurora, Illinois 60504
630.820.1022
cmtengr.com



ENGINEERING RESOURCE ASSOCIATES, INC.
Consulting Engineers, Scientists & Surveyors
www.eraconsultants.com

CONTACT US
630.393.3060

- water resources	- site development
- transportation	- environmental services
- infrastructure	- recreation
- structural design	- construction management
- structural inspection	- surveying and mapping

Warrenville | Geneva | Chicago | Champaign

Outstanding Service Awards

Awarded to an IAFSM officer, a Federal, State, or Local Official, or a consultant who has gone above and beyond normal expectations and duties to promote or encourage IAFSM goals. This award may also be given to an agency that has inspired floodplain management efforts or implemented unique programs that encourage flood reduction.

Three Outstanding Service Awards were given this year: Hank DeHaan and Matt Hunn of the U.S. Army Corps of Engineers, and Cheryl Ramsey of FEMA.

Outstanding Service: Hank DeHaan and Matt Hunn, ACOE

Hank DeHaan and Matt Hunn of the U. S. Army Corps of Engineers received the award for going far above normal expectations to address levee issues and local floodplain management in Illinois. Most importantly, they have added a human face and a reliable point-of-contact for virtually all Corps activities in Illinois. Together they have:

- Overseen the inspection and coordination of nearly 1,500 miles of levee systems in Illinois, Iowa, and Missouri.
- Lead the Corps effort to evaluate performance of Mississippi River levees, floodways, and reservoirs during the 2011 flood event (from St. Louis to New Orleans).
- Assisted citizens in understanding risk and what to do about it.
- Participated on state and regional teams focused on improving flood risk management.
- Represented IL and Midwest on National flood risk management teams.
- Coordinated Corp's flood fight efforts in 2008 and 2011 floods.

Outstanding Service: Cheryl Ramsey, FEMA

Cheryl Ramsey of FEMA also received the Outstanding Service award. Although very few IAFSM members know Cheryl, a huge number of people in Illinois have been positively impacted by her work. She has been a FEMA Disaster Assistance Employee (DAE) for nearly 20 years, and in that time has become OUR disaster assistance employee. As a FEMA DAE, Cheryl processes all the paperwork during declared disasters, coordinates all the response and recovery actions, promotes mitigation programs, responds to complaints, and works with Illinois citizens during what could be the lowest periods of their lives.

We are truly blessed to have Cheryl as our DAE. She is extremely knowledgeable about mitigation and has always provided valuable insight for NFIP issues and Mitigation grants. Her tact, insight, diplomacy, overall knowledge, and organizational skills are invaluable, especially during some seemingly insurmountable and chaotic times. Cheryl LOVES people and she has a level of dedication that goes above-and-beyond the level of above-and-beyond level required for this award. Much of our disaster recovery and mitigation success is due to Cheryl.



Matt Hunn, Army Corps of Engineers



Hank DeHaan accepts the Outstanding Service award from Mike Cothard



Cheryl Ramsey, FEMA DAE

Stormwater Management Awards

Awarded to a floodplain manager, an individual, a group of individuals, a consultant, or an agency who improved stormwater management or reduced urban flood risks through creative engineering, regulatory measures, or other approaches. The award can also be considered for someone who struggles to implement flood hazard reduction at the local level in the absence of sophisticated programs and support.

Two awards were given this year: Dundee Township for best project, and Robert Murdock for best Stormwater Manager.

Stormwater Management: Dundee Township

Dundee Township won the Stormwater Management Project award for the Jelkes Creek Quarry Restoration Project located in Kane County. Dundee Township teamed with Living Waters Consultants to complete the project, which restored 150 acres of eroded quarry with chronic flooding and 20-foot tall degraded slopes into a recreational park amenity.

Features include fishing lakes, emergent wetland habitat, walking trails, scenic overlooks, ADA accessible fishing piers, pavilion, and a parking facility. Stormwater BMPs include 3500 feet of bioswales, 5000 linear feet of terraced wetlands, 110 acres of native plant seeding, sediment forebays, reuse of sand and gravel bioswales and infiltration, buffer filtration, and rock checks. Over 86 acres of the project site now retain and infiltrate runoff into the regional groundwater supply, protecting Jelkes Creek water quality. The project provides flood control, water quality and ecological benefits, which include: retention and filtration of runoff by wetlands, native plants, bioswales, and on-site aggregate soils; long-term site stabilization; habitat diversity; species recovery; improved site aesthetics; and protection of downstream Jelke Creek and the Fox River basin.

Stormwater Mgmt: Robert Murdock, Michael Baker Jr.

The Stormwater Manager Award was also presented to Robert Murdock. During his five years as Stormwater Committee Chair for IAFSM, Bob grew the committee from a one-man-operation to an energetic committee with many active members. The committee was an important stakeholder in the Green Infrastructure for Clean Water Act study on Stormwater BMPs and their potential statewide requirement, attending nearly all of the outreach and input sessions with IEPA and UIC and helping to draft IAFSM's official comments on the final draft report in 2010.

Perhaps most importantly, Bob organized and hosted over 11 different workshops and educational sessions to provide training and education to over 800 stormwater and floodplain managers. Many of your CECs may be courtesy of Bob's efforts. Congratulations and Thank You, Bob!




Sue Harney of Dundee Township and Ted Gray of Living Waters with Mike Cothard



Robert Murdock accepts the Stormwater Management award from Mike Cothard

Creating Value ...

Creating value by delivering innovative and sustainable solutions for infrastructure and the environment.



... Delivering Solutions

Water Services:
Dams • Stormwater Best Management Practices • NPDES Permitting • Flood Control • Floodplain Management
Stormwater Utilities • Stream Restoration/Stabilization

Baker

Michael Baker Jr., Inc.
Chicago, IL • 312.707.8770 • www.mbakercorp.com

Mitigation Award: SIU Natural Hazards Research and Mitigation Group

This award is given to an individual or community that has encouraged flood hazard reduction through a buyout program, retrofitting, preparation of a mitigation plan, or other similar mitigation efforts.

This year's Mitigation award goes to Southern Illinois University Center, Natural Hazards Research and Mitigation Group, led by Dr. Nicholas Pinter, a geology professor at SIU-Carbondale. Dr. Pinter wanted his students to do more than just academic research, so in 2006 SIU received a grant to develop 16 mitigation plans for counties in Southern Illinois. Fueled by their initial success, Dr. Pinter and his students developed 25 mitigation plans, representing nearly 25% of all the mitigation plans done in Illinois.

One component of the mitigation plans is GIS mapping, led by Dr. Jonathon Remo. SIU is a leader in GIS mapping and their mitigation plans have become a national model for how to incorporate solid GIS modeling to forecast risks and probability. Dr. Remo is one of the nation's premier users of FEMA's HAZUS software. FEMA calls him with questions!



Mike Cothard presents the Mitigation Award to SIU Students Beth Ellison and Jen Dierauer.

As an extension of their mitigation planning efforts, Dr. Pinter and his students worked to help Alexander County and the Town of Olive Branch recover from the 2011 floods. Students Beth Ellison and Jen Dierauer, among others, spent long hours helping organize the recovery and process paperwork. They developed one of Illinois's largest mitigation applications to acquire and relocate the entire town of Olive Branch. They worked especially hard to keep the community together by holding public meetings, working with citizens to explain the process, and developing a relocation site. All of this work was done as a volunteer effort by SIU.

SIU has made a lasting impact on the flood loss reductions in Southern Illinois.

Journalism and Public Education Award: Village of South Holland

This award is generally given media outlet that has produced floodplain or stormwater management special features during the year. The award can include individuals or agencies who have contributed to public awareness of floodplain or stormwater management issues.

The 2012 Public Education Award goes to the Village of South Holland. The South Holland floodplain management website is a model example of community outreach. The website is packed with information and incorporates a multitude of links and documentation on flood insurance, codes, regulations, "why do we flood", floodproofing, etc. In addition, South Holland has held many floodproofing open houses, conducted citizen outreach programs, and has done the popular flood mitigation rebate program. Over the years, the Village of South Holland has implemented an outstanding public education program to educate citizens about flooding and flood loss reduction. Visit <http://www.southholland.org/index.php?page=FloodProtection> to see their great work!



Tim DeYoung and Fredrick Block of the Village of South Holland, with Mike Cothard



IAFSM

Illinois Association for
Floodplain and Stormwater Management

2012 Annual Conference Sponsors

Thanks to the following companies and organizations who helped support our 2012 annual conference.

Gold Contributors (\$1,000)

Christopher B. Burke Engineering, Ltd.

Silver Contributors (\$500)

Baxter & Woodman, Inc.
CDM Smith
Ciorba Group, Inc.
Crawford, Murphy & Tilly, Inc.
Engineering Resource Assoc., Inc.
Hanson Professional Services

HDR Engineering, Inc.
Hey and Associates, Inc.
HNTB Corporation
HR Green, Inc.
Michael Baker Jr., Inc.

Bronze Contributors (\$300)

Bleck Engineering Company, Inc.
Cardno ENTRIX
CPI Supply
Daniel Creaney Company
Foth Infrastructure & Environment, LLC
Hoelscher Engineering, P.C.
Infrastructure Engineering, Inc.
Maki and Company
McDonough Associates, Inc.

Molly O'Toole & Associates, Ltd.
MWH Americas, Inc.
RHMg, Inc.
Robinson Engineering, Ltd.
URS Corporation
U.S. Geological Survey
V3 Companies
Wills Burke Kelsey Associates, Ltd.

~ Please join us in extending our thanks to these great IAFSM supporters~

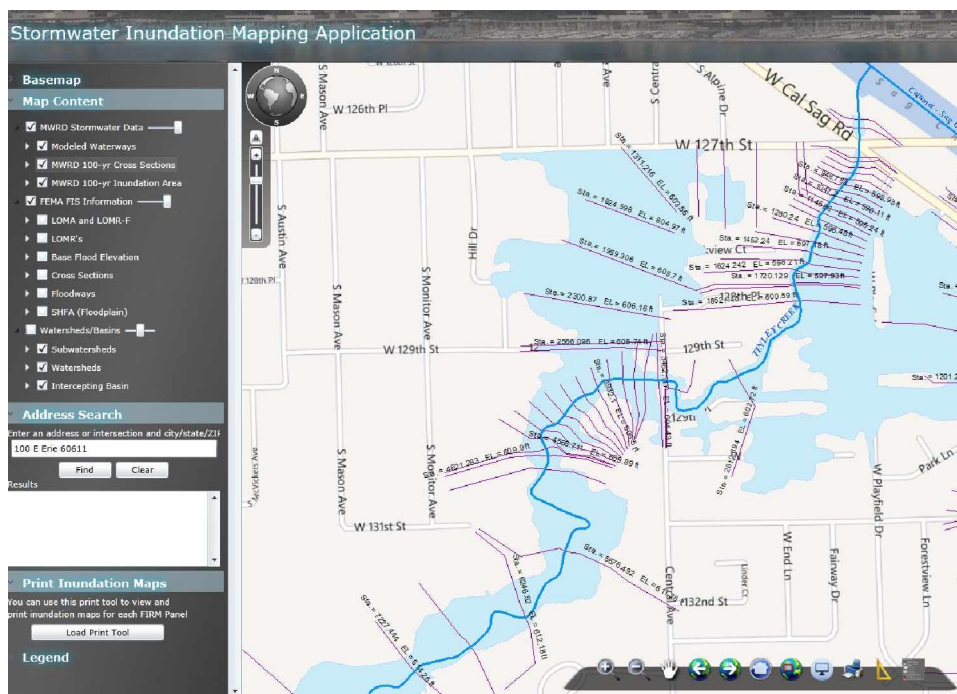
MWRD creates online Stormwater Inundation Mapping Application

~Jonathan Grabowy, P.E., CFM, Metropolitan Water Reclamation District of Greater Chicago

The Metropolitan Water Reclamation District of Greater Chicago (MWRD) has created an online Stormwater Inundation Mapping Application (SWIMA). The MWRD utilized data acquired during development of Detailed Watershed Plans (DWPs) for the six major watersheds of Cook County: Calumet-Sag Channel, Little Calumet River, Lower Des Plaines River, North Branch of the Chicago River, Poplar Creek and Upper Salt Creek. DWPs identify regional stormwater management concerns and provide conceptual level projects to potentially address identified problems.

To facilitate this effort, MWRD needed reliable hydrologic and hydraulic (H&H) modeling. Hydrology was modeled with HEC-HMS and hydraulics was modeled in HEC-RAS. The starting point for the land-use data was the Chicago Metropolitan Agency for Planning's 2001 Land Use Dataset and 2005 USGS aerial photography.

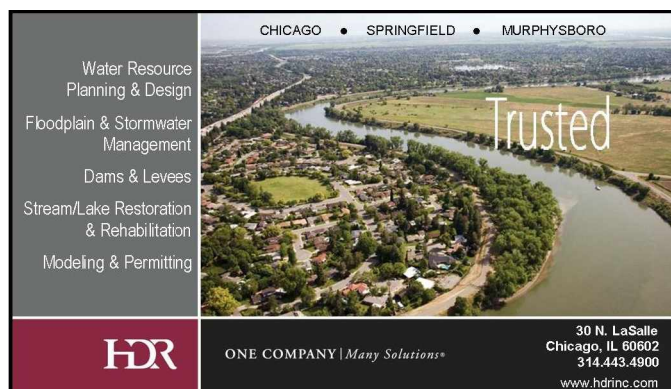
Multiple coordination meetings were held with local stakeholders to ensure accuracy in assumptions used in the modeling. Extensive surveying was also completed to ensure accuracy of the H&H models. Multiple storm events were used for calibration, including the September 12-14, 2008 storm (remnants of Hurricane Ike). Inundation maps were developed using HEC-GeoRAS with 2-foot contours provided by Cook County. Model specific details can be obtained from the DWP reports available at <http://stormwater.mwrdd.org>.



SWIMA was developed as an informational tool that allows users to conveniently view DWP inundation areas along with Federal Emergency Management Agency (FEMA) National Flood Hazard Area information within Cook County, Illinois. It is not meant to be used in determining regulatory base flood elevations. The goal of the tool is to provide the MWRD's inundation mapping alongside FEMA's information so that the public is aware of available modeled flood risk information. The application can be accessed at <http://gispub.mwrdd.org/swima/>.

SWIMA was built using ArcGIS API for Silverlight with ArcGIS Server. The background maps, aerial photography and search functionality are provided by Microsoft's Bing. The MWRD stormwater layers are served locally, but the FEMA layers are provided in real time by utilizing FEMA National Flood Hazard Layer Web Map Services. The application has basic pan and zoom features with address search and layer control functionality. In addition, the application allows for easy printing of the Cook County Inundation Maps. The application was developed by MWRD's Engineering and Information Technology Departments.

Please contact Mr. Jonathan Grabowy at (312) 751-4015 for additional information.



Changes to FEMA's Appeals Process for FIS Reports, PMRs, LOMRs

~Summary courtesy of the Missouri Floodplain and Stormwater Managers Association

FEMA has revised its existing appeal policy to expand the due process procedures for new or modified Base Flood Elevations (BFEs) to other new or modified flood hazard information shown on a Flood Insurance Rate Map (FIRM), including additions or modifications to any Special Flood Hazard Area (SFHA) or regulatory floodway. The policy change affects both studies and Letters of Map Revision (LOMRs). There will be significant impacts on existing procedures, letters, and other documentation related to the Appeals Process.

The revised policy is described in Procedure Memorandum No. 57. FEMA has released a related guidance document titled Criteria for Appeals for Flood Insurance Rate Maps. Both documents are available from FEMA's library at <http://www.fema.gov/library/viewRecord.do?id=4938>. If you have any questions on the new procedure memorandum please email FEMA at Femags@riskmapcds.com.


When is the new policy effective?

This guidance is effective as of December 1, 2011 and applies to certain in-progress and all future flood studies and Physical Map Revisions (PMRs). Specifically it will apply to all flood studies and PMRs for which preliminary and certain revised preliminary FIRMs and Flood Insurance Study (FIS) reports are issued on or after December 1, 2011. It will also apply to all flood studies and PMRs for which a proposed flood hazard determination (formerly called a Proposed Rule) is published in the FEDERAL REGISTER on or after December 1, 2011. It will not apply to flood studies and PMRs for which preliminary FIRMs and FISs were issued prior to December 1, 2011 and for which a statutory 90-day appeal period was not required at the time of issuance. The guidance also applies to Letters of Map Revision (LOMRs) that reflect updated flood hazards issued on or after December 1, 2011.

What Effect will the Policy Change Have?

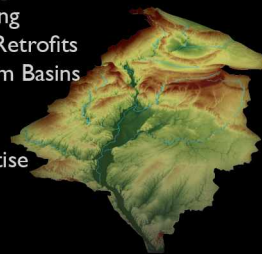
Under the new policy, the addition/modification of BFEs/base flood depths or any change in SFHA boundary, floodway delineation, or zone designation requires a statutory 90-day appeal period and the fulfillment of the additional due process notification requirements outlined in the National Flood Insurance Program regulations.

Federal Register publications and other public notices identifying appealable FIRM changes will be simplified under the Expanded Appeals Process and will no longer include specific flooding source names or BFE listings; instead links to online preliminary Flood Insurance Studies (FISs) and FIRMs and LOMR documents will be included in the notices to allow users to better understand the changes being made to their community's FIS and FIRM.



**SUSTAINABLE SOLUTIONS
FOR YOUR WATERSHED**

- Stormwater & Floodplain Management
- Hydrologic & Hydraulic Modeling
- Local Flooding Assessments & Retrofits
- Ecological Management of Storm Basins
- Water Quality & BMP Design
- Watershed Planning
- CPESC/Erosion Control Expertise
- Value Engineering
- Constructability Reviews
- Grant Application Assistance



VISIT US ON THE WEB AT WWW.V3CO.COM/NR

SIGN UP FOR EDUCATIONAL ITEMS & TIPS AT
WWW.V3CO.COM/SIGNUP.HTML

Natural Resources
INSIGHTS

Hey and Associates, Inc.

Stormwater & Floodplain Management
Civil Engineering Design
Wetland Delineation & Mitigation
Ecological Restoration & Management
Water Quality & Lake Management
Regulatory Permitting



ILLINOIS
Volo
Aurora
Chicago

WISCONSIN
Milwaukee

heyassoc.com 847.740.0888

From the Chair

- Michael D. Cothard, P.E., CFM, Christopher B. Burke Engineering, Ltd.

This year's annual conference just ended and I have to say thank you to our Vice-Chair and Conference Committee Chair, Loren Wobig. Based on the style of the national conference, Loren introduced field trips to this year's conference. The trips visited an array of mitigation sites and visited stormwater/floodplain construction associated with the O'Hare Airport Modernization Program. Early returns are calling it a smashing success. To the members who attended, I hope you enjoyed the conference. The comment forms are being reviewed and we will work to incorporate the results into next year's conference, which will be held at the same location as last year: the Marriott Hotel in Normal, Illinois.

The Conference and pre-conference workshops require the time and effort of many volunteers. I am proud to say that in the 10 years I have been involved with the association, we always have members willing and able to help make the conference a success. Once again, the conference attendance was the greatest to date, and we couldn't have done it without our volunteers. Thank you!

Planning for the next conference will begin at the May meeting. I would like to remind all members that they are invited to participate at our bi-monthly board meetings, join committees which address subjects of interest to them, or send me information or comments which you would like presented to the board and attendees at the next meeting.

The annual conference board meeting was held at 7:30 the morning on the second day of the conference. For the members who were unable to make the meeting I would like to offer the following highlights. After 5 years as chair of the Stormwater Management Committee, Bob Murdock stepped down. The current chair of the Floodplain Management Committee, Erik Gil, stepped down and was elected chair of the Stormwater Management Committee. Shauna Urlacher, a dedicated member of the stormwater management committee who had worked with Bob Murdock, was elected chair of the Floodplain Management Committee. Please join me in thanking Bob for his service and welcoming the new committee chairs. The IAFSM website is constantly updated with the meeting agendas, minutes of meetings, and items which are considered of interest to the membership. Please stop by and visit.

Lastly, the Tennessee Association of Floodplain Management (TN AFPM) has been accepted by ASFPM as their 33rd Chapter. They will be welcomed into the ASFPM at the national conference which runs from May 20-25, in San Antonio, Texas. Welcome to our friends in Tennessee!



**Christopher B. Burke Engineering, Ltd.**


Consulting Engineering Services

- Water Resources • Stormwater Management • Surveying
- Environmental • Transportation • Structural • Mechanical
- Construction • Design / Build • Municipal Engineering
- Site Development • Expert Witness Testimony

**9575 W. Higgins Road
Rosemont, IL 60018
(847) 823-0500
(847) 823-0520 fax
www.CBBEL.com**




Office Locations:
IL: Rosemont • New Lenox • Peoria
IN: Indianapolis • Crown Point • South Bend • Columbus • Ft. Wayne



BAXTER & WOODMAN
Consulting Engineers

Promoting sound ecosystems through proper management of stormwater and wetlands.

Serving clients throughout the Midwest
815.459.1260
www.baxterwoodman.com



**CIORBA GROUP** | Consulting Engineers
Quality engineering solutions for the community

Transportation	Municipal	Water Resources
Structural		Construction Observation

5507 N. Cumberland Avenue, Chicago, IL 60656 773.775.4009 www.ciorba.com

Save the Date! 2013 Conference

The 2013 IAFSM Annual Conference will be held March 6 – 7, 2013 at the Marriott in Bloomington-Normal, with pre-conference continuing education workshops and the CFM exam on March 5, 2013.

Wanted: Newsletter Ideas and Articles

IAFSM members, this is YOUR newsletter! What types of articles would you like to read about in *The IAFSM Current*? Email Jennifer Maercklein, editor, at jmaercklein@v3co.com if there are topics that you'd like us to cover. You don't need to write the article - we just want your ideas! You provided many great ideas on the conference questionnaire, and we are pursuing several of those. We'd love additional ideas, either now or whenever the idea strikes.

If you're gifted with a pen and would like to provide content, we welcome your written contributions as well. Email the editor with a brief abstract and we'll consider it for future publication. Newsletter Publication Deadlines are shown online at http://illinoisfloods.org/com_newsletter.html. Abstracts are requested one month prior to the publication deadline.

Newsletter Delivery Method: The Votes are In!

If you filled out a questionnaire during the conference, you may recall that we sought feedback on the method of delivering this newsletter: via PDF attachment, or via a link to our website. The votes are in! Nearly 300 members voted. 40% prefer an email with PDF attachment, 36% prefer an email with link to our website, and 24% indicated no preference. Because votes were so evenly split, we will continue to send the newsletter via email link. This allows us to produce the newsletter with higher resolution graphics and saves server space in your inboxes. We will simplify the URL for those whose email programs strip the HTML formatted hyperlink. Thank you for your feedback!

Get Involved with IAFSM!

As summarized in the "News from the Floodplain Management Committee" box to the left, there are many great reasons to get involved on a committee with IAFSM. All of our committee chairs would welcome your help and involvement. See the list of committee chairs on the last page of this newsletter, or visit the committee webpage to learn more about volunteer opportunities.

<http://www.illinoisfloods.org/committees.html>

Free CECs from FEMA

Do you need CECs? Are you looking for training opportunities? FEMA offers free online training modules that provide 1 – 10 CECs (as approved by ASFPM). Visit ASFPM's website to view the list of courses and obtain registration information.

<http://www.floods.org/index.asp?menuid=417&firstlevelmenuid=180&siteid=1>



News from the Floodplain Management Committee

Our new Floodplain Management Committee Chair is:

SHAUNA URLACHER

With a new committee chair, come new opportunities to get involved. We are seeking volunteers interested in serving on the Floodplain Management Committee.

Some benefits to serving on a committee include:	What is involved in serving on a committee?
<ul style="list-style-type: none">• Have input on future events• Stay current on industry changes• Develop leadership skills• Networking opportunities	<ul style="list-style-type: none">• Assist with committee events• Participate in committee conference calls• Provide enthusiasm & fresh ideas

For more information or to volunteer, contact Shauna at 312.382.1294 or via e-mail at shauna.urlacher@clarkdietz.com

Borrow our Water Table!

Our Water Tables have been a big hit with kids and grown-ups alike! You may have seen our table (or played with it) during the Annual Conference. The table belongs to IAFSM members and is available for all members to check out (free of charge) and bring to Public Works Open Houses, Scout meetings, 4-H meetings, school classrooms, etc. This new model offers a real opportunity to educate about the dangers and impact of unplanned development and human activity in the floodplain.

Through the use of this model, students can explore the value of wetlands and retention ponds in flood management. They can construct their own levees and witness how stream flow is affected and can impact downstream communities during times of high runoff. They can simulate ice damming and other seasonal risks in the floodplain. They can measure runoff volume and construct their own hydrograph of stream flow over time. Most importantly, they will work as a team to find and test solutions to a variety of floodplain problems simulated by the model. An in-depth curriculum guide is available to introduce students to important tools in the management of our critical watershed resources. Curriculum is geared towards middle school and high school students, with adaptations for younger grades.

IAFSM has two models and keeps one in Springfield and the other in northeast Illinois. Contact Sarah at iafsm@sbcglobal.net to make arrangements to borrow the model.

Next Board Meeting

The next IAFSM Board Meeting is scheduled for 10:00 a.m. on Wednesday, May 9, 2012 at V3 Companies, 7325 Janes Avenue, Woodridge. All members are welcome and encouraged to attend. See you there!

Jobmart

Visit our Jobmart at <http://www.illinoisfloods.org/jobmart>. Jobmart is a free service to members of IAFSM. Current openings include Civil & Water Resources Engineer at Conservation Design Forum and Water Resources Design Engineer at V3 Companies. If you would like to post a position, send complete information to IAFSM@sbcglobal.net. The information should include a detailed job description and information on how to obtain an application (e.g., contact person, phone/fax numbers, URL). Please also include an expiration date for the posting.

2012 CFM Exam Schedule

- Bartlett: **Summer 2012** (IDNR)
- Woodridge: **Fall 2012** (V3)
- Champaign: **September 12, 2012** (ISWS)
- Rosemont: **December 12, 2012** (CBBEL)

As a reminder, IAFSM uses the National Association of State Floodplain Managers (ASFPM) Exam. The National Exam includes questions on coastal floodplain requirements and excludes Illinois-specific questions. The Illinois Floodplain Management Desk Reference found on our website is a valuable tool for floodplain managers in Illinois, but it is not a comprehensive study guide for the National Exam. To register, visit www.illinoisfloods.org/certification.html.



transportation
water
governmental services
senior living
energy

Clean water is everybody's **business.**



We tackle water resource challenges with a careful **business approach.**

Phone **800.728.7805**
HRGreen.com

Chicago | McHenry | Moline | New Lenox | Rockford | Yorkville

design + construct + own + operate



Illinois Association for
Floodplain and Stormwater Management

THE IAFSM CURRENT

Spring 2012 Newsletter

The IAFSM Newsletter is published quarterly for members of the Illinois Association for Floodplain and Stormwater Management. Information and opinions contained herein do not necessarily reflect the views of all members. Items for publication and other editorial matters should be directed to the editor at jmaercklein@v3co.com. To advertise in this newsletter (\$100-\$200 per year depending on ad size) contact the association at IAFSM@sbcglobal.net.

IAFSM OFFICERS and COMMITTEE CHAIRS

CHAIR

Michael Cothard, PE, CFM
Christopher B. Burke Eng., Ltd.
mcothard@cbbel.com

TREASURER

Lillian Prince, PE, CFM
DuPage County
LBP.iafsm@gmail.com

PAST CHAIR

Jeff Wickenkamp, PE, CFM
Hey and Associates
jwickenkamp@heyassoc.com

VICE CHAIR

Loren Wobig, PE, CFM
IDNR/Office of Water Resources
Loren.wobig@illinois.gov

SECRETARY

Glenn Heistand, PE, CFM
Illinois State Water Survey
heistand@illinois.edu

EXECUTIVE SECRETARY

Sarah Harbaugh
IAFSM@sbcglobal.net

CONFERENCE

Loren Wobig, PE, CFM
IDNR/Office of Water Resources
Loren.wobig@illinois.gov

EDUCATION OUTREACH

Amanda Flegel, PE, CFM
Illinois State Water Survey
aflegel@illinois.edu

NEWSLETTER

Jennifer Maercklein, PE, CFM
V3 Companies of Illinois
jmaercklein@v3co.com

NOMINATIONS & ELECTIONS and AWARDS

Paul Osman, CFM
IDNR/Office of Water Resources
Paul.Osman@illinois.gov

FLOODPLAIN MANAGEMENT

Shauna Urlacher, PE, CFM
Clark Dietz - Engineers
Shauna.urlacher@clarkdietz.com

STORMWATER MANAGEMENT

Erik Gil, PE, CFM
Christopher B. Burke Eng., Ltd.
egil@cbbel.com

CERTIFICATION

Matt Wahl, CFM
Peoria County
mwahl@peoriacounty.org

INTER-ORGANIZATIONAL

Kerry K. Behr, PE, CFM
Engineering Resources Associates
kbehr@eraconsultants.com

WETLANDS

Tom Kehoe
Christopher B. Burke Eng., Ltd.
tkehoe@cbbel.com

COMMUNITY RATING SYSTEM

Mary Lou Kalsted, PE, CFM
Village of Lisle
mkalsted@villageoflisle.org

LEGISLATIVE

Kay Whitlock, PE, D.WRE
Christopher B. Burke Eng., Ltd.
kwhitlock@cbbel.com

YOUTH OUTREACH

Andrew Braun, CFM
Peoria County
abraun@peoriacounty.org

MITIGATION

Molly O'Toole, PE, CFM
Molly O'Toole & Associates, Ltd.
molly@mollyotoole.com

ILLINOIS ASSOCIATION FOR FLOODPLAIN AND STORMWATER MANAGEMENT

35W749 Bluff Drive, St. Charles, Illinois 60175

IAFSM@sbcglobal.net Phone: 630-443-8145 Fax: 630-443-8198

For current Job Postings and CEC Training Opportunities, visit our website at illinoisfloods.org