



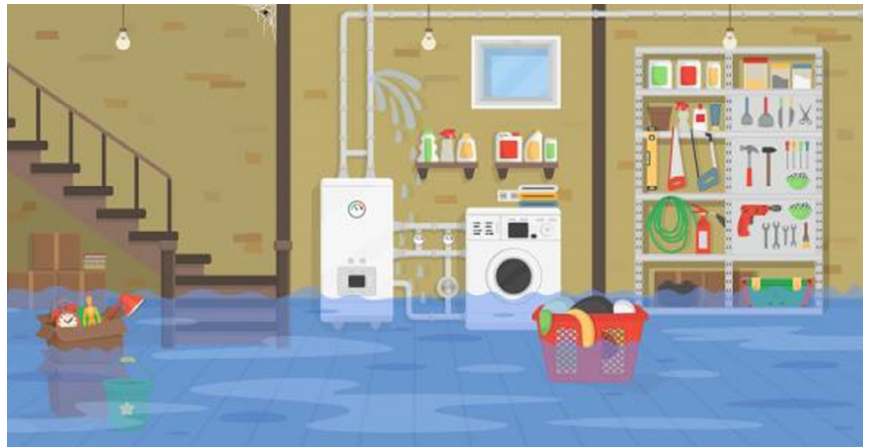
THE IAFSM CURRENT

Illinois Association for Floodplain and Stormwater Management

Summer 2024 Newsletter

How to Drain a Flooded Basement: Instructions

Pumping a basement out too soon after a flood could result in a broken floor and damaged walls due to pressure from the saturated soil surrounding the foundation. Advise property owners to wait for not only surface waters to recede but also wait for the ground water to recede. Provide residents with instructions to avoid this damage and potentially a substantial damage determination. A plumber or a flood restoration company may be needed to help remove the water. Removing eight or more feet of water, using the following step-by-step instructions, will take four or more days.



Step 1

Make sure the electricity and gas are shut off, call your flood insurance agent or insurance company to start your claim, and take photos.

Step 2

If the floodwater has receded from outside of the home, you can slowly begin pumping the water out of the basement in stages.

Step 3

Mark the height of the water before pumping. Pump the water level down only one to two feet. Mark the new water level on a wall and wait overnight to see if water seeps back in (and rises above the second mark).

Step 4

Check the water level the next day.

- If the water went up, it's too early to try to drain the basement. Wait overnight for a second night and repeat Step 3.
- If the water has not risen, pump the water down another one to two feet, mark the water level, and again wait overnight.

Step 5

If the water level does rise overnight, pump down at two-to-three-foot increments waiting overnight, until the basement is pumped out.

Inside This Issue

How to Drain a Flooded Basement: Instructions	Page 1
Alternative to Sandbags	Page 2
BRIC and FMA Grants – 2024 Notice of Intent	
Applications Available	Page 3
From the Chair	Page 4
Legislative Committee News	Page 5

CRS Training	Page 5
Young Professionals Group Updates	Page 6
CEC Education & Training Opportunities	Page 7
Illinois and FEMA Floodplain Management Webinars	Page 7
Important Stuff	Page 8

Alternative to Sandbags

Not all flood protection needs to be expensive. Protecting window wells, garage doors, or other low entry points for water can be simple and there are numerous options now that don't require filling sandbags. Sandless alternatives include bags that are the same size as regular sandbags but are filled with a material that swells when wet. Other sandbag options include long rubber tubes, which are filled with water to provide a barrier, and can vary from 6 feet to 100 feet in length and from 4 inches to 20 inches in height.

These alternatives allow property owners to have the protection available before a flood warning has been issued. These products are available primarily online with some options now available for pick up at home improvement stores. Please note the IAFSM and the State of Illinois do not endorse any of these products. Advise property owners to research each product to determine if they will meet their needs.

The websites below are for both barriers and sandless sandbags. Other manufacturers may be found.

FloodBreak: <http://floodbreak.com/>

FloodSax: <https://www.floodsaxus.com/>

AquaSafe: <http://buyaquasafe.com/>

Stormtec: <http://stormbag.co/>

Quick Dam: <http://www.quickdams.com>


Watershed Solutions: <http://hydrabarrier.com/>

Presray: <http://www.presray.com/flood-barriers-floodgates/>



Hey and Associates, Inc.

Engineering, Ecology and Landscape Architecture



heyassoc.com

MAURER-STUTZ

ENGINEERS SURVEYORS



Comprehensive Services:

- ▶ Nutrient Management Planning
- ▶ Storm Water Management
- ▶ Dam Design & Rehabilitation
- ▶ Floodplain Studies & Mapping
- ▶ Watershed Planning & Documents
- ▶ Bioswales & Permeable Pavements

3116 North Dries Ln Suite 100 Peoria, IL 61604 | www.mstutz.com | (309) 693-7615





RESILIENT WATER SOLUTIONS

Planning, design, & management of stormwater and flood control.

V3CO.COM | 630.724.9200



CiorbaGroup

CONSULTING ENGINEERS

LET'S BUILD BETTER COMMUNITIES TOGETHER

- ▶ Water Resources
- ▶ Roadway
- ▶ Structures
- ▶ Construction

- ▶ Survey
- ▶ Municipal & Civil
- ▶ Electrical & Lighting
- ▶ Forensic

Offices in: Illinois | Indiana | Michigan

www.ciorba.com



BRIC and FMA Grants – 2024 Notice of Intent Applications Available

The Illinois Emergency Management Agency and Office of Homeland Security (IEMA-OHS) is accepting pre-applications from local, tribal and territorial governments located throughout Illinois for the Building Resilient Infrastructure and Communities (BRIC) and Flood Mitigation Assistance (FMA) Fiscal Year 2024 funding opportunity.

The pre-application period opens Monday, June 10, 2024. A completed pre-application form needs to be returned to IEMA-OHS to begin your application process for this funding opportunity. To obtain a copy of the pre-application fillable pdf form, contact Zachary Krug (contact info below).

If you had previously submitted a pre-application/sub-application for HMGP 4728/4749 and would like it to be additionally considered under BRIC/FMA FY 24, please contact the IEMA-OHS Hazard Mitigation Section.

The deadline to submit the pre-application is close of business, Friday, October 4, 2024.

For more information please contact Zachary Krug, IEMA-OHS Hazard Mitigation Section Manager, Office: 217-524-6513 / Cell: 217-306-6179 / Email: Zachary.krug@illinois.gov



WATER RESOURCES

- Project Planning
- Modeling
- Master Planning
- Storytelling
- Funding
- Design
- Construction

STORMWATER EXPERTS FROM OPEN-CHANNELS TO URBAN FLOOD MITIGATION

baxterwoodman.com



CBBEL PROUDLY SUPPORTS IAFSM



Christopher B. Burke Engineering, Ltd.

Founded in 1986, CBBEL is a full-service consulting engineering and surveying firm committed to delivering accurate, timely and cost-effective solutions to a wide range of engineering and environmental challenges. Learn more at CBBEL.com.




exp.

EXPONENTIAL POSSIBILITIES

ENGINEERING | ARCHITECTURE | DESIGN | CONSULTING

exp.com



Farnsworth GROUP

www.f-w.com

WHEN THE STORM COMES, YOU CAN TURN TO FARNSWORTH GROUP

ARCHITECTS | ENGINEERS | SURVEYORS | SCIENTISTS

From the Chair

-Dallas Alley, CFM, City of Fairview Heights

IAFSM members, I hope that you are all enjoying your summer! Spring in Southern Illinois provided much needed rains and some not so needed rains, however, due to efforts by the Illinois floodplain management community, I am not aware of any damage to property as a result of the rains. As I write this article I am preparing to travel to Salt Lake City to represent IAFSM at the annual ASFPM conference, and I begin my journey as a Chapter District Director for ASFPM District 2. I look forward to representing IAFSM and the other chapters in District 2. Our partnership with ASFPM is strong and helps Illinois be a relevant member in policy throughout the country. If any members have concerns that they want to be brought to the forefront at the national level I encourage them to reach out to me.

During the last several months the IAFSM executive board has been diligently working to align the association with current practices and standards, and I want to personally commend Jenny Loewenstein for all of her hard work. Jenny has been a great addition to the Board and I don't know what we would do without her. That being said, we are actively seeking individuals who are interested in serving on the executive board in the future, as well as serving on our many committees. If you are interested in serving the association please reach out.

In closing I would like to quote Andrew Carnegie who once said, "Every act you have ever performed since the day you were born was performed because you wanted something." Members, act on the things you want. Just remember that we are but stewards of the land, so we must also consider what is best for the community as a whole and the land we occupy. Always stop and consider if the work performed is for the greater good.

Be well and I look forward to when we see each other again.

**ENGINEERING**
RESOURCE ASSOCIATES

Our Services

Hydraulic Modeling for Waterway Crossings
Scour Analysis & Countermeasure Design
Stormwater Master Planning • Stormwater Management
Regional Detention Facility Design • Pump Stations
Water Quality Best Management Practice (BMPs)
& Permitting



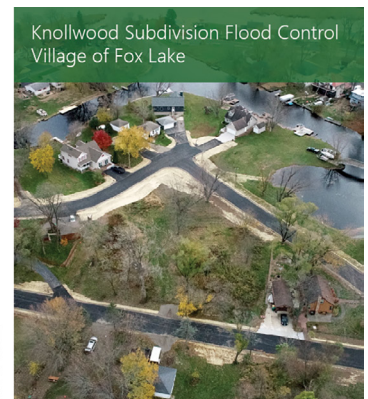
(630) 393-3060 // eraconsultants.com
Warrenville | Chicago | Champaign | Milwaukee

**GEWALT HAMILTON**
ASSOCIATES, INC.
A Personal Approach to Civil Engineering

- Municipal
- Site Design
- Water Resources
- Landscape Architecture
- Facilities & Utilities Management
- Geospatial Information System
- Land Surveying
- Construction
- Transportation
- Traffic Data Collection

<https://www.gha-engineers.com/>
847-478-9700





Legislative Committee News

The IAFSM Legislative Committee members continued our regular bi-weekly video calls through this spring's General Assembly session with regular conversations about the status of various bills of interest to IAFSM members. This session, the committee observed progress on a wetlands bill (initially SB3669 and HB5386, later SB771). The wetlands bills garnered lots of discussion both pro and con but no final action. A similar bill will likely be introduced in the next session.

This spring we also discussed a new Indiana law that requires county and municipal floodplain managers to have completed a training program specifically addressing floodplain management. Next year, we will be interested to hear from our Indiana counterpart about how the implementation of that regulation is working.

The committee members are currently compiling a list of legislators that committee members know or have working relationships with. We continue to encourage IAFSM members to get to know the elected officials who represent them.

Interested in learning more? Contact P. Kay Whitlock, kwhitlock@cbbel.com.

CRS Training

FEMA's Insurance Services Office is offering two 2-day virtual CRS workshops, free, and open to anyone:

Offering #1:

- August 20-21, 2024
- 9:00am Eastern/8:00am Central/7:00am Mountain/6:00am Pacific
- Register for offering #1 – https://us02web.zoom.us/webinar/register/WN_mbFyA8utRxuHIEsuO7YCkQ

Offering #2:

- September 11-12, 2024
- 10:30am Eastern/9:30am Central/8:30am Mountain/7:30am Pacific
- Register for offering #2 - https://us02web.zoom.us/webinar/register/WN_A1Ter8EGQD-KwaENxaM9sw

Workshop details:

- There is no charge for these workshops.
- This workshop is an abbreviated version of the 4-day class.
- The workshop has been approved for 12 CECs from ASFPM. A certificate of attendance will be provided after completion of the class.
- Each student will need to register themselves to get credit for the workshop.
- Each student will need to log in using the link they are sent when registering. This will keep attendance for each student.
- Each student must attend at least 6 hours each day.
- Each student must complete periodic knowledge checks to receive a certificate.
- There will be no partial credit, students will only receive a certificate if they attend both days.
- PDFs of the PowerPoint slides are available here: <https://crsresources.org/files/training/training-materials/crs-2-day-workshop.zip>
- There is a master list of elements that may be helpful for students – see attached. This is also available here: https://crsresources.org/files/2021-addendum/master_list_of_elements-2017_manual_2021_addendum.pdf
- The workshop will not be recorded.

Space is limited in each offering.

Young Professionals Group Updates

The YP group will be doing a tour of the Starved Rock Lock and Marseilles Lock and Dam on Friday, September 20th. The tour will last around three hours. Please fill out this form to register: <https://forms.gle/e1EwoTqxce5k8DFB8>.

Thanks to all those who attended our recent YP events: the Elmhurst Quarry Tour and the Billiards Social Hour in Champaign.



Contact Alana Rosenbaum at arosenbaum@baxterwoodman.com with any questions about the IAFSM Young Professionals Group.



**PROVIDING
FLOODPLAIN &
STORMWATER
MANAGEMENT
SERVICES**

CMT
Engineers and Consultants

@cmtengrs | cmtengr.com



**WBK
ENGINEERING**
Part of Bodwé Group


Tribally Owned; 8(a) Certified; DBE Certified (Illinois and Michigan);
Indian Small Business Economic Enterprise (ISBEE)

**CIVIL ENGINEERING, PLANNING, AND ENVIRONMENTAL
CONSULTING IN COLLABORATION WITH LAND AND WATER**

We work nationwide in support of public and private clients in the following markets:


- Municipal
- Bridges & Structures
- Indigenous
- Transportation
- Water & Dams
- Federal
- Site Development

www.wbkengineering.com



HRGreen®

Sustainable management of water resources is an important key to your success. We are here to help you achieve your goals.



► AURORA | McHENRY
NEW LENOX | PEORIA

► HGREEN.COM

**TRUSTED PARTNERS.
PROVEN RESULTS.**

Hanson is your trusted advisor for innovative engineering solutions.

Offices serving Illinois: Springfield, Peoria, Lisle, McHenry, Frankfort, Murphysboro, Indianapolis and St. Louis


 **HANSON** | HANSON-INC.COM



**Michael Baker
INTERNATIONAL**

PROVIDING TIMELY,
COST-EFFECTIVE AND
VALUE ADDED WATER
RESOURCES SOLUTIONS
TO RESTORE AND
ENHANCE OUR NATION'S
INFRASTRUCTURE

MBAKERINTL.COM



CEC Education & Training Opportunities

Looking for training opportunities? The following opportunities are coming up in the next few months. If you are looking for credits, be sure to review the material and confirm they meet the appropriate requirements.

IAFSM/ASFPM Sponsored Training Opportunities:

ASFPM Annual Conference May 18-22, 2025 New Orleans, LA

Additional Training Opportunities:

EMI provides a wide range of training opportunities and upcoming training. EMI courses are free for local and state government employees. Learn more at the EMI website: <http://training.fema.gov/emicourses/>

- E0273 Managing Floodplain Development through the NFIP- Sept 9-12, 2024, Dec 9-12, 2024

Webinars

- ASFPM: <https://www.floods.org/training-education/online-training/asfpm-webinars/>
- AFPM is offering additional at home training. For information: <https://floods.redvector.com/>
- Also...ASFPM has On Demand Learning seminars that would be of interest to current and future CFM's. Check it out at [On-Demand Learning \(floods.org\)](https://www.floods.org/training-center/on-demand-learning/)
- Other training and CEC opportunities can be found on ASFPM's calendar: <https://www.floods.org/training-center/training-events/>

Illinois and FEMA Floodplain Management Webinars

FEMA will continue their monthly webinar series in 2024. Illinois DNR will resume our series in the fall, will continue to have trainings on the second Tuesday of the month. Please share this information with your building inspectors, permit staff, engineers, and public work staff. Use the links below to register and add to your calendar.

- 7/31/2024, (Wed), 9-10 am, [FEMA Managing Map Changes](#)
- 8/28/2024, (Wed), 9-10 am, [FEMA Resolving Potential Violations: Floodway, Low Floor, Vents](#)
- 9/10/2024 (Tues) 11:30-12:30, [Illinois Floodplain Permits and Ordinance Administration](#)
- 9/25/2024, (Wed), 9-10 am, [FEMA Accessory and Agricultural Structures](#)
- 10/30/2024, (Wed), 9-10 am, [FEMA Great Lakes Coastal Floodplain Management](#)
- 11/27/2024, (Wed), 9-10 am, [FEMA Natural and Beneficial Functions](#)
- 12/18/2024, (Wed), 9-10 am, [FEMA Community Rating System \(CRS\)](#)



HORNER SHIFRIN
An Employee-Owned Company

Designing solutions for floodplain and stormwater management since 1933

Engineering • Surveying • GIS

Chicago • Marion • O'Fallon • Offices in Missouri and Arkansas

The Right Choice Since 1933 www.hornershifrin.com



At GRAEF we believe that improving a community's infrastructure happens both above and below the ground.

Whether you are building a new municipal facility or restoring a degraded wetland, your project will have an effect on the environment. GRAEF has experts to assist you in the wide ranging impacts of any project.

LEARN MORE

joanna.colletti@graef-usa.com
graef-usa.com
773 / 399 4637

GRAEF

check out this project
check out this project
check out this project

Important Stuff We Tell You in Every Newsletter...

2025 IAFSM Conference

The 2025 Annual Conference will be held next March in Tinley Park. Stay tuned for date information.

Wanted: Newsletter Ideas & Articles

IAFSM members, this is YOUR newsletter! Email Jennifer Maercklein, editor, at jmaercklein@v3co.com if there are topics that you'd like us to cover. You don't need to write the article - we just want your ideas! If you're gifted with a pen and would like to provide content, we welcome your written contributions as well.

Get Involved with IAFSM!

IAFSM Committee Chairs welcome your help and involvement. See the list of chairs on the last page of this newsletter, or visit the committee webpage to learn more about volunteer opportunities. <http://www.illinoisfloods.org/committees.html>

Borrow our Water Table

IAFSM has five Watershed Tabletop Models available for all members to check out (free of charge) and bring to Public Works Open Houses, Scout meetings, 4-H meetings, school classrooms, etc. This offers a great opportunity to educate about the dangers and impact of unplanned development and human activity in the floodplain. IAFSM currently keeps tables in Summerfield, Champaign, Bartlett, Woodridge, and Swansea. Contact Sarah Harbaugh at IAFSM@illinoisfloods.org to make arrangements.

Next Board Meeting

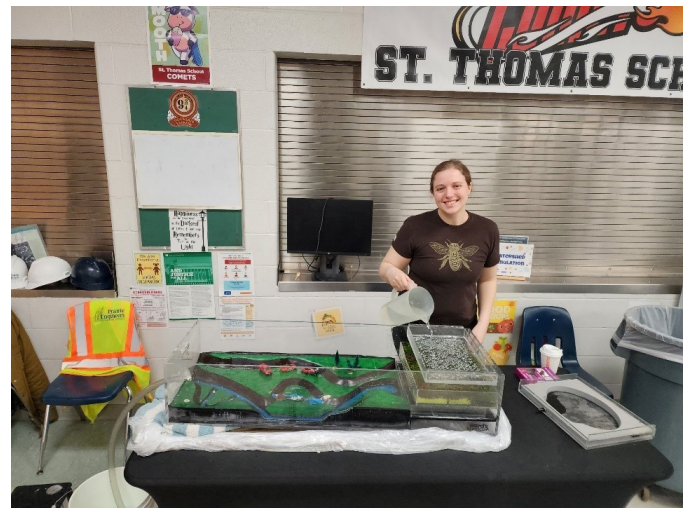
The next IAFSM Board Meetings will be held on July 10 and September 11 via Zoom. Join us! All members are welcome and encouraged to attend. Contact Sarah Harbaugh for the Zoom link.

Jobmart

Visit our Jobmart at illinoisfloods.org/jobmart.html. Jobmart is a free service to members of IAFSM. To post an open position, please sign into our website and complete the job listing form. If you have any questions please contact Sarah at IAFSM@illinoisfloods.org.

CFM Exams

Beginning in 2023, exams are only offered online. Online exams can be taken in your home (monitored by an online proctor) or at a testing center; there are many testing centers throughout Illinois. For information, visit www.illinoisfloods.org/certification.html.



Sarah Wenzel brought the IAFSM water table to St. Thomas Middle School's Science Palooza event in Peoria Heights and demonstrated to students and parents how different surfaces can affect water runoff in an interactive exhibit.

A banner for Engineering Enterprises, Inc. featuring a landscape photo of a pond with reeds on the left. On the right, there is a logo with 'EEI' in a square and '50 YEARS' in large gold numbers. Below the logo, the text reads 'Engineering Enterprises, Inc.', 'Sugar Grove | Rockford | Itasca', 'www.eeiweb.com', and '(630) 466-6700'. At the bottom, a gold bar contains the text 'PROUD SPONSOR OF IAFSM' and a dark blue bar at the very bottom says 'Outstanding Service - Every Client - Every Day'.



THE IAFSM CURRENT

Illinois Association for Floodplain and Stormwater Management

Summer 2024 Newsletter

The IAFSM Newsletter is published quarterly for members of the Illinois Association for Floodplain and Stormwater Management. Information and opinions contained herein do not necessarily reflect the views of all members. Items for publication and other editorial matters should be directed to the editor at jmaercklein@v3co.com.

IAFSM OFFICERS & COMMITTEE CHAIRS

CHAIR

Dallas Alley, CFM
City of Fairview Heights
Alley@cofh.org

VICE CHAIR

Sharon Østerby, CFM
Lake Co Stormwater Mgmt Comm.
SOsterby@lakecountyil.gov

TREASURER

Mary J Richardson, CFM
Illinois State Water Survey
mjr@illinois.edu

SECRETARY

Jenny Loewenstein, P.E., CFM
Contigo Engineering
Jenny.loewenstein@contigoengineering.com

PAST CHAIR

Stephen Altman, P.E., CFM
IDNR - OWR
Steve.Altman@illinois.gov

EXECUTIVE SECRETARY

Sarah Harbaugh
IAFSM@illinoisfloods.org

CONFERENCE

Sharon Østerby, CFM
Lake Co Stormwater Mgmt Comm.
SOsterby@lakecountyil.gov

BOARD NOMINATIONS

Mark Hoskins, P.E., CFM
IDNR-OWR
Mark.Hoskins@illinois.gov

AWARDS

Sarah Hunn, P.E.
DuPage County
Stormwater Management
Sarah.Hunn@dupageco.org

CERTIFICATION

Gregory Thorpe, CFM
Rock Island County
Gthorpe@co.rock-island.il.us

COMMUNITY RATING SYSTEM

Julie Lomax, CFM, P.E.
Village of Downers Grove
JLomax@downers.us

EDUCATION OUTREACH

Diane Bouckaert, P.E., CFM
Manhard Consulting Ltd
dbouckaert@manhard.com

FLOODPLAIN CHAIR

Dawn Cosentino, P.E., CFM, CPESC
Illinois State Water Survey
dawncos@illinois.edu

INTER-ORGANIZATIONAL

Ajay Jain, P.E., CFM
H.R. Green
ajain@hrgreen.com

LEGISLATIVE

Kay Whitlock, P.E., D.WRE
Christopher B. Burke Eng., Ltd.
kwhitlock@cbbel.com

MITIGATION

Ron Davis
IDNR-OWR
Ron.Davis@illinois.gov

NEWSLETTER

Jennifer Maercklein, P.E., CFM
V3 Companies
jmaercklein@v3co.com

STORMWATER MANAGEMENT

Steve Bicking, P.E., D. WRE, CFM
HR Green
sbicking@hrgreen.com

WETLANDS

Tom Kehoe
Christopher B. Burke Eng., Ltd.
tkehoe@cbbel.com

YOUNG PROFESSIONALS

Alana Rosenbaum, P.E., CFM
Baxter & Woodman
ARosenbaum@baxterwoodman.com

YOUTH OUTREACH

Brian Chaille, P.E., CFM
Illinois State Water Survey
bchaille@illinois.edu

ILLINOIS ASSOCIATION FOR FLOODPLAIN & STORMWATER MANAGEMENT

35W749 Bluff Drive, St. Charles, Illinois 60175

IAFSM@IllinoisFloods.org Phone: 630.443.8145 Fax: 630.443.8198

For current Job Postings and CEC Training Opportunities, visit our website at illinoisfloods.org