



# THE IAFSM CURRENT

Illinois Association for  
Floodplain and Stormwater Management

Fall 2012 Newsletter

## Impressive Participation in CRS Saves Illinois Residents Nearly \$1.5M

-Scott Cofoid, CFM, ISO, and Mary Lou Kalsted, P.E., CFM, Village of Lisle

FEMA’s Community Rating System (CRS) recognizes communities that implement sound, effective floodplain management activities that go above and beyond the NFIP minimums. Not only is a community recognized for being a floodplain management leader nationwide, but residents receive discounts on their flood insurance premiums based on what class the community achieves. Illinois residents who pay flood insurance are saving nearly \$1.5M in annual premiums as a result of their community’s participation in CRS!

We’ve all generally known that Illinois has been a leader in floodplain management throughout the years, but now we can see that through everyone’s participation in the CRS and how well Illinois communities are doing, we’re proving it. As of October 1, 2012, there will be 53 Illinois communities participating in the CRS. Illinois’s participation in CRS has always been near the top when compared to other states, but the growth of this program in Illinois has been particularly impressive over the past 2 years.

Since 2010, twelve new Illinois communities have joined CRS and ten other communities have improved a Class or more. Those ten class improvements have led to \$130,295 in additional flood insurance premium savings annually. Currently, there are four class improvements pending which will add another \$74,424 to annual statewide flood insurance savings. Overall, Illinois residents are saving \$1,454,930 on their flood insurance premiums every year through their community’s participation in the CRS Program.

Illinois now ranks 6<sup>th</sup> nationally in the number of participating communities with 53 (See Figure 1). Two years ago, we were tied for 7<sup>th</sup> and had been in 7<sup>th</sup> place for quite some time. We are only six new communities away from 4<sup>th</sup> place. That is quite an accomplishment considering eight of the top ten states are located on the coast.

In addition, we’ve added four new Class 5 communities and nine new Class 6 communities over the past two years. Illinois ranks 3<sup>rd</sup> in the total number of Class 6 communities with thirteen and 3<sup>rd</sup> in the total number of Class 5 communities with nine (Figure 2).

**Figure 1: Top 10 CRS States (5-1-12)**

1. Florida – 217
2. California – 83
3. North Carolina – 81
4. New Jersey – 58
5. Texas – 54
6. **Illinois – 53**
7. Colorado – 46
- T8. Louisiana/South Carolina – 44
10. Georgia – 36

An impressive result of these recent classification increases is that the average points earned statewide now sits at 1,964 points. That is only 36 points shy of 2,000 which is a Class 6. It’s almost 500 points (a full Class) better than the national average (1,481). In fact, out of all states in the top ten, Illinois has the highest point

### Inside This Issue

Illinois CRS Participation .....	Page 1	Update your Contact Info Online .....	Page 4
From the Chair .....	Page 3	CEC/Training Opportunities .....	Page 6
Do you have Photos to Share? .....	Page 3	Important Stuff .....	Page 7
Call for Speakers .....	Page 4		

average. The next closest is Florida, with 1,651 average points statewide. None of the others even make the top ten list of highest state averages. In addition, there are no Class 9 communities in IL.

This means that all the communities participating are not just gathering the low hanging fruits; it means we go well above and beyond even the CRS basics. Figure 3 shows a breakdown of the number of communities in Illinois per Class.

**Illinois CRS Users Group.**

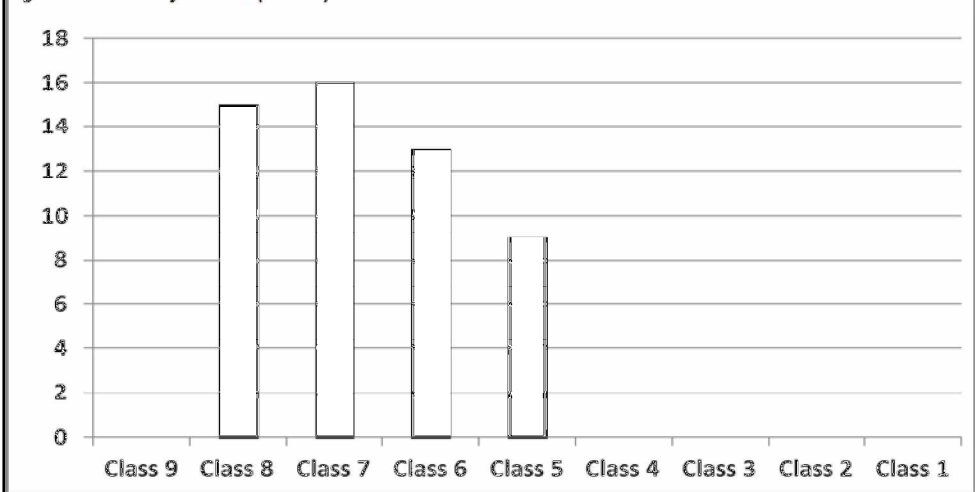
Illinois has a CRS Users Group, where all CRS communities are welcome to participate. The group meets periodically, in person or by conference call, to discuss CRS issues, explore various CRS activities in order to gain more points, or for general training. Because of the upcoming CRS Manual changes, attending these group meetings is more important and beneficial than usual. If you are a CRS Coordinator and have not taken advantage of this group, please do so by contacting Mary Lou Kalsted, CRS Users Group lead, at [mkalsted@villageoflisle.org](mailto:mkalsted@villageoflisle.org) or (630) 271-4107.

**CRS Changes in 2013.** Significant changes are coming to the CRS program, when the new CRS Coordinator’s Manual is released in early 2013. CRS communities have been reviewing the proposed changes during the past year, and have discussed various proposals and provided feedback to the CRS program. The Illinois CRS Users Group has influenced some of these changes by having a stronger voice in the process. Individual participation would have been less effective. Changes to the CRS Program can be found at [www.CRS2012.org](http://www.CRS2012.org) or by contacting Scott Cofoid, Illinois’s ISO/CRS Specialist at (815) 220-1002 or [scofoid@iso.com](mailto:scofoid@iso.com).

**Interested in Joining the Program or Learning More?** If you are interested in joining the program, or learning more about CRS, contact Scott Cofoid, Illinois’s ISO/CRS Specialist at (815) 220-1002 or [scofoid@iso.com](mailto:scofoid@iso.com).

<b>Figure 2: Class 6 and Class 5 Comparisons</b>	
<b>Class 6's</b>	<b>Class 5's</b>
1. Florida – 55	1. Florida – 17
2. California – 15	2. Washington – 11
3. Illinois – 13	3. Illinois – 9
4. South Carolina – 12	4. Texas 6
T5. New Jersey – 9	T5. California - 3
North Carolina	Mississippi

**Figure 3. IL Classifications (5-1-12)**



## From the Chair

- Michael D. Cothard, P.E., CFM

Fall is here and Loren Wobig our Vice-Chair and Conference Committee Chair is deep in preparation of the 2013 IAFSM Conference. You should have already received the call for papers, volunteers, exhibitors and sponsors; Loren is waiting for your abstracts and bios, due October 15<sup>th</sup>. Due to the previous popular response we will again be holding our annual conference at the Marriott in Normal. He has been planning the plenaries and has ideas for the field trips and other surprises. Please watch for conference information and if interested in volunteering to help coordinate the conference please contact Loren at Loren.Wobig@illinois.gov.

I need to announce that annual IAFSM membership dues will be raised from \$20 to \$25 starting in May, 2013. This is the first recorded increase in the dues I could find and we are still amongst the lowest of all of the ASFPM Chapters. We are hoping to absorb the increase into the conference fee for all attendees without increasing the conference registration rate from last year. Members who do not attend the conference and wish to renew their membership will be subject to a \$5 increase beginning with our next renewal cycle in May, 2013.

Finally, I would like to announce that the Utah Chapter has joined as our 34<sup>th</sup> Chapter. Please take a moment to visit the ASFPM site and discover the information and education options offered by them.

---

## Do You Have a Great Photo to Share?

Pictures are worth a thousand words! Do you have a great photo(s) that you'd like to share with our members? It could be a "Before" and "After" photo of floodplain mitigation, a stormwater management project, a wetland mitigation project, or just an interesting photo of flooding in your community. In the Newsletter Questionnaire distributed at last spring's conference, members overwhelmingly indicated that they liked to see pictures in the newsletter. Please submit your project photos, photos from your community, or other items of interest to the newsletter editor at [jmaercklein@v3co.com](mailto:jmaercklein@v3co.com) for inclusion in the newsletter!

The photo below is the view out the Building Inspector's office in Alton, Illinois, which may be the best office view in the entire state! Most of Alton's floodplain is open space. The marina (blue rooftops) is built on a series of floating docks, with HVAC and electrical services elevated on a second floor platform. Photo courtesy of Doug Waggoner, City of Alton.



## Call for Speakers: 2013 Annual Conference

**SPEAKERS:** IAFSM invites speakers from municipal, public and private sectors to present information on floodplain and stormwater management topics at our 2013 Annual Conference on March 6-7, 2013 in Bloomington-Normal, Illinois.

Based on suggestions from the membership, IAFSM intends for the 2013 IAFSM Annual Conference to provide more focused/in-depth education and training in the principal committee disciplines of IAFSM including Floodplain Management, Stormwater Management, Mitigation, Wetlands, CRS, and Legislation. To that end, a portion of the 2013 Conference Breakout Sessions will be dedicated to specific core topics developed by IAFSM Technical Committees potentially based on presentation abstracts submitted by the membership. For example, the Stormwater Committee might dedicate an entire session to training or issues on a specific kind of BMP measure. Remaining Conference Breakout Sessions will still be dedicated to topics completely based on presentation abstracts submitted by the membership as part of this call for speakers.

**TOURS:** Does your community have a floodplain, stormwater, mitigation, or wetland project in the vicinity of the conference hotel you would like to show to other floodplain managers? IAFSM is again planning to offer Technical Field Tours of interesting project sites in the area. Please submit nominations for potential tour sites.

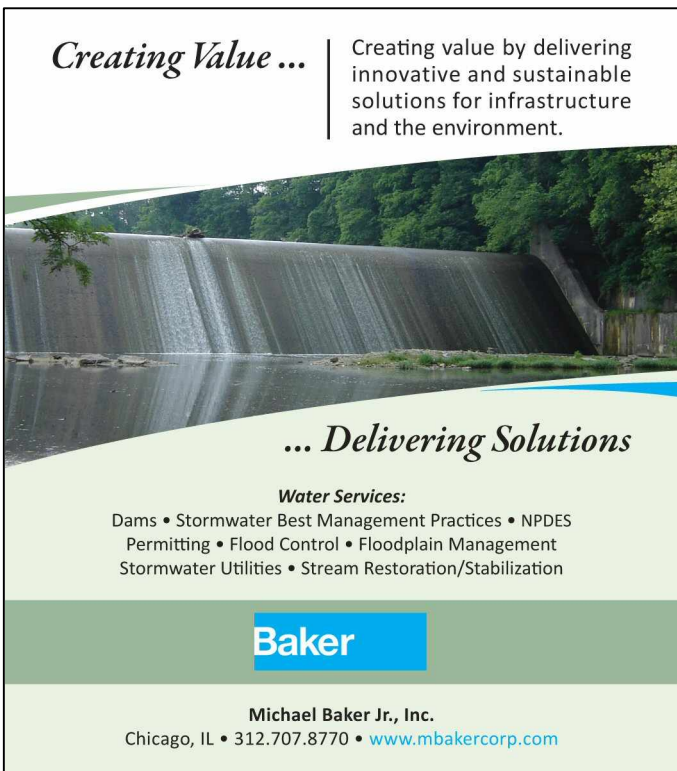
For more information, click on “Call for Speakers” under the “Latest IAFSM News” heading on the right side of our home page at <http://www.illinoisfloods.org/index.html>.

**Abstracts and Tour Ideas are due by 5:00 PM Monday, October 15, 2012.** Please e-mail Loren Wobig, Conference Chair at [loren.wobig@illinois.gov](mailto:loren.wobig@illinois.gov)

### Update Your Contact Info Online

Did you know you can update your contact information online?

If your contact information has changed, you can visit <http://www.illinoisfloods.org/membership.html> and click on “Membership Profile Change” to update your e-mail address, phone number, address, etc.



*Creating Value ...* | Creating value by delivering innovative and sustainable solutions for infrastructure and the environment.

*... Delivering Solutions*

**Water Services:**  
Dams • Stormwater Best Management Practices • NPDES Permitting • Flood Control • Floodplain Management  
Stormwater Utilities • Stream Restoration/Stabilization

**Baker**

Michael Baker Jr., Inc.  
Chicago, IL • 312.707.8770 • [www.mbakercorp.com](http://www.mbakercorp.com)



**SUSTAINABLE SOLUTIONS FOR YOUR WATERSHED**

- Stormwater & Floodplain Management
- Hydrologic & Hydraulic Modeling
- Local Flooding Assessments & Retrofits
- Ecological Management of Storm Basins
- Water Quality & BMP Design
- Watershed Planning
- CPESC/Erosion Control Expertise
- Value Engineering
- Constructability Reviews
- Grant Application Assistance

VISIT US ON THE WEB AT [WWW.V3CO.COM/NR](http://WWW.V3CO.COM/NR)

SIGN UP FOR EDUCATIONAL ITEMS & TIPS AT [WWW.V3CO.COM/SIGNUP.HTML](http://WWW.V3CO.COM/SIGNUP.HTML)

Natural Resources INSIGHTS



**CBB** Christopher B. Burke Engineering, Ltd.

- Water Resources
- Stormwater Management
- Environmental
- Transportation
- Structural
- Mechanical/Electrical
- Surveying
- Construction
- Design/Build
- Municipal Engineering
- Site Development
- Expert Witness Testimony

9575 W. Higgins Road, Suite 600 - Rosemont, IL 60018  
 847.823.0500 [www.CBBEL.com](http://www.CBBEL.com)  
 Offices in: Illinois - Peoria, New Lenox, Morris  
 Indiana - Indianapolis, Crown Point, South Bend, Columbus



**BAXTER & WOODMAN**  
*Consulting Engineers*

Promoting sound ecosystems through proper management of stormwater and wetlands.

Serving clients throughout the Midwest  
 815.459.1260  
[www.baxterwoodman.com](http://www.baxterwoodman.com)



**Hey and Associates, Inc.**

Stormwater & Floodplain Management  
 Civil Engineering Design  
 Wetland Delineation & Mitigation  
 Ecological Restoration & Management  
 Water Quality & Lake Management  
 Regulatory Permitting



**ILLINOIS**  
 Volo  
 Aurora  
 Chicago

**WISCONSIN**  
 Milwaukee

[heyassoc.com](http://heyassoc.com) 847.740.0888

Aviation  
 Highways & Bridges  
 Water & Wastewater  
 Land Development



**CMT**  
**CRAWFORD, MURPHY & TILLY, INC.**  
 CONSULTING ENGINEERS


**Office Locations**  
 Springfield, IL  
 Aurora, IL  
 Chicago, IL  
 Columbus, OH  
 Edwardsville, IL  
 Indianapolis, IN  
 Peoria, IL  
 Rockford, IL  
 St. Louis, MO

550 North Commons Drive, Suite 116  
 Aurora, Illinois 60504  
 630.820.1022  
[cmtengr.com](http://cmtengr.com)



transportation  
 water  
 governmental services  
 senior living  
 energy

**Clean water** is everybody's **business.**



We tackle water resource challenges with a careful **business approach.**

Phone 800.728.7805  
[HRGreen.com](http://HRGreen.com)

Aurora | Chicago | McHenry | Moline  
 New Lenox | Rockford | Yorkville

design + construct + own + operate



**ENGINEERING RESOURCE ASSOCIATES, INC.**  
 Consulting Engineers, Scientists & Surveyors  
[www.eraconsultants.com](http://www.eraconsultants.com)

**CONTACT US**  
**630.393.3060**

- water resources
- transportation
- infrastructure
- structural design
- structural inspection
- site development
- environmental services
- recreation
- construction management
- surveying and mapping

**Warrenville | Geneva | Chicago | Champaign**



**CIORBA GROUP** | Consulting Engineers  
 Quality engineering solutions for the community

Transportation	Municipal	Water Resources
Structural		Construction Observation

5507 N. Cumberland Avenue, Chicago, IL 60656 773.775.4009 [www.ciorba.com](http://www.ciorba.com)

## CEC / Training Opportunities

AFSPM's website does a great job of listing training opportunities! The ASFPM list of training and education opportunities is available on their website at:

[http://www.floods.org/n-calendar/list\\_view.asp?date=](http://www.floods.org/n-calendar/list_view.asp?date=)

Below is a list of webinars and opportunities in the Illinois vicinity.

### IAFSM

- Wetlands Educational Seminar and Field Trip, October 11, 2011, \$10.
- <https://www.123signup.com/register?id=shygk>

### NAFSMA

- Agency to Agency Flood Risk Management Mentoring Session, November 9, Chicago Drake Hotel
- <http://www.nafsma.org/index.php>

### ASFPM

- LIDAR Essentials webinars, FREE, several dates:
  - October 22, 2012-Specifying LIDAR collection Projects
  - November 9, 2012- LIDAR acceptance and QC
  - December 10, 2012- Using LIDAR Data
- <http://www.floods.org/index.asp?menuID=236&firstlevelmenuID=182&siteID=1>

### Wisconsin Association for Floodplain, Stormwater and Coastal Managers

- Annual Conference in Madison  
October 10-12<sup>th</sup>, 2012 - \$110 registration for non-members.
- <http://wi.floods.org>.

### ASDSO webinars- \$95 per course

- October 9, 2012, Introduction to Foundation Grouting for New and Existing Dams, by David B. Wilson, P.E., Daniel P. Stare, P.E., and Trent L. Dreese, P.E.,
- November 13, 2012, Introduction to Earth Spillway Design and Evaluation, by Darrel M. Temple, P.E., D.WRE,
- December 11, 2012, Introduction to Internal Drainage Systems for Dams, by James R. Talbot, P.E.,
- <http://www.damsafety.org/conferences/?p=5f1b08a0-c1d8-4d4f-82b7-87068b06b021>

### STARR/FEMA-

- October 11, 2012, Determining a BFE Webinar – FREE -  
<http://www.floods.org/n-calendar/dayevents.asp?id=2696&type=3&date=10/11/2012>
- October 18<sup>th</sup>, 2012, Elevation Certificates in A Zones Webinar- FREE  
<http://www.floods.org/n-calendar/dayevents.asp?id=2697&type=9&date=10/18/2012>

### Center for Watershed Protection/Association of Watershed and Stormwater Professionals- \$149 (for group and scholarships available to nonprofits)

- October 24, 2012, Leaving You Out in the Rain – Design & Implementation of Monitoring Projects
- December 12, 2012, Customizing Your Stormwater BMP Design for Specific Pollutants
- <http://www.cwp.org/component/jevents/year.listevents/2012/12/12/-/-.html>

## Important Stuff We Tell You in Every Newsletter...

### Save the Date! 2013 Conference

The 2013 Annual Conference will be held March 6 – 7 at the Bloomington-Normal Marriott.

### Wanted: Newsletter Ideas and Articles

IAFSM members, this is YOUR newsletter! E-mail Jennifer Maercklein, editor, at [jmaercklein@v3co.com](mailto:jmaercklein@v3co.com) if there are topics that you'd like us to cover. You don't need to write the article - we just want your ideas! If you're gifted with a pen and would like to provide content, we welcome your written contributions as well.

### Get Involved with IAFSM!

IAFSM Committee Chairs welcome your help and involvement. See the list of chairs on the last page of this newsletter, or visit the committee webpage to learn more about volunteer opportunities. <http://www.illinoisfloods.org/committees.html>

### Borrow our Water Table

IAFSM has two Watershed Tabletop Models available for all members to check out (free of charge) and bring to Public Works Open Houses, Scout meetings, 4-H meetings, school classrooms, etc. This offers a great opportunity to educate about the dangers and impact of unplanned development and human activity in the floodplain. IAFSM keeps one in Springfield and the other in northeast Illinois. Contact Sarah at [iafsm@sbcglobal.net](mailto:iafsm@sbcglobal.net) to make arrangements.

### Next Board Meeting


The next IAFSM Board Meeting is scheduled for 9:00 a.m. on Wednesday, November 14, 2012 at the City of Ottawa Council Chambers, 301 West Madison St, Ottawa. All members are welcome and encouraged to attend. See you there!

### Jobmart

Visit our Jobmart online at <http://www.illinoisfloods.org/jobmart.html> Jobmart is a free service to members of IAFSM. If you would like to post a position, send complete information to [IAFSM@sbcglobal.net](mailto:IAFSM@sbcglobal.net).

### 2012 CFM Exam Schedule

To view 2012 exam dates and register, visit [www.illinoisfloods.org/certification.html](http://www.illinoisfloods.org/certification.html).



Water Resource Planning & Design  
Floodplain & Stormwater Management  
Dams & Levees  
Stream/Lake Restoration & Rehabilitation  
Modeling & Permitting


CHICAGO • SPRINGFIELD • MURPHYSBORO

Trusted

30 N. LaSalle  
Chicago, IL 60602  
314.443.4900  
www.hdrinc.com

ONE COMPANY | Many Solutions®

# HNTB



Engineering | Architecture | Planning | Allied Services


---

- FEMA Flood Insurance Studies
- Ports and Harbors
- Transportation Services
- Structural/Geotechnical Engineering
- Dams and Levees
- Water Supply Planning
- GIS Design and Management

---

Corporate Headquarters  
1525 S. Sixth St. • Springfield, IL 62703  
(217) 788-2450 • [www.hanson-inc.com](http://www.hanson-inc.com)  
Offices Nationwide

Offices Serving Illinois: Chicago, Tinley Park, Rockford, Peoria, Springfield, Carbondale and St. Louis





# THE IAFSM CURRENT

Illinois Association for  
Floodplain and Stormwater Management

Fall 2012 Newsletter

The IAFSM Newsletter is published quarterly for members of the Illinois Association for Floodplain and Stormwater Management. Information and opinions contained herein do not necessarily reflect the views of all members. Items for publication and other editorial matters should be directed to the editor at [jmaercklein@v3co.com](mailto:jmaercklein@v3co.com). To advertise in this newsletter (\$100-\$200 per year depending on ad size) contact the association at [IAFSM@sbcglobal.net](mailto:IAFSM@sbcglobal.net).

## IAFSM OFFICERS and COMMITTEE CHAIRS

### CHAIR

Michael Cothard, PE, CFM  
Christopher B. Burke Eng., Ltd.  
[mcothard@cbbel.com](mailto:mcothard@cbbel.com)

### TREASURER

Lillian Prince, PE, CFM  
DuPage County  
[LBP.iafsm@gmail.com](mailto:LBP.iafsm@gmail.com)

### PAST CHAIR

Jeff Wickenkamp, PE, CFM  
Hey and Associates  
[jwickenkamp@heyassoc.com](mailto:jwickenkamp@heyassoc.com)

### VICE CHAIR

Loren Wobig, PE, CFM  
IDNR/Office of Water Resources  
[Loren.wobig@illinois.gov](mailto:Loren.wobig@illinois.gov)

### SECRETARY

Glenn Heistand, PE, CFM  
Illinois State Water Survey  
[heistand@illinois.edu](mailto:heistand@illinois.edu)

### EXECUTIVE SECRETARY

Sarah Harbaugh  
[IAFSM@sbcglobal.net](mailto:IAFSM@sbcglobal.net)

### CONFERENCE

Loren Wobig, PE, CFM  
IDNR/Office of Water Resources  
[Loren.wobig@illinois.gov](mailto:Loren.wobig@illinois.gov)

### EDUCATION OUTREACH

Amanda Flegel, PE, CFM  
Illinois State Water Survey  
[aflegel@illinois.edu](mailto:aflegel@illinois.edu)

### NEWSLETTER

Jennifer Maercklein, PE, CFM  
V3 Companies of Illinois  
[jmaercklein@v3co.com](mailto:jmaercklein@v3co.com)

### NOMINATIONS & ELECTIONS and AWARDS

Paul Osman, CFM  
IDNR/Office of Water Resources  
[Paul.Osman@illinois.gov](mailto:Paul.Osman@illinois.gov)

### FLOODPLAIN MANAGEMENT

Shauna Urlacher, PE, CFM  
Clark Dietz - Engineers  
[Shauna.urlacher@clarkdietz.com](mailto:Shauna.urlacher@clarkdietz.com)

### STORMWATER MANAGEMENT

Erik Gil, PE, CFM  
Christopher B. Burke Eng., Ltd.  
[egil@cbbel.com](mailto:egil@cbbel.com)

### CERTIFICATION

Matt Wahl, CFM  
Peoria County  
[mwahl@peoriacounty.org](mailto:mwahl@peoriacounty.org)

### INTER-ORGANIZATIONAL

Kerry K. Behr, PE, CFM  
Engineering Resources Associates  
[kbehr@eraconsultants.com](mailto:kbehr@eraconsultants.com)

### WETLANDS

Tom Kehoe  
Christopher B. Burke Eng., Ltd.  
[tkehoe@cbbel.com](mailto:tkehoe@cbbel.com)

### COMMUNITY RATING SYSTEM

Mary Lou Kalsted, PE, CFM  
Village of Lisle  
[mkalsted@villageoflisle.org](mailto:mkalsted@villageoflisle.org)

### LEGISLATIVE

Kay Whitlock, PE, D.WRE  
Christopher B. Burke Eng., Ltd.  
[kwhitlock@cbbel.com](mailto:kwhitlock@cbbel.com)

### YOUTH OUTREACH

Andrew Braun, CFM  
Peoria County  
[abraun@peoriacounty.org](mailto:abraun@peoriacounty.org)

### MITIGATION

Molly O'Toole, PE, CFM  
Molly O'Toole & Associates, Ltd.  
[molly@mollyotoole.com](mailto:molly@mollyotoole.com)

## ILLINOIS ASSOCIATION FOR FLOODPLAIN AND STORMWATER MANAGEMENT

35W749 Bluff Drive, St. Charles, Illinois 60175

[IAFSM@sbcglobal.net](mailto:IAFSM@sbcglobal.net) Phone: 630-443-8145 Fax: 630-443-8198

For current Job Postings and CEC Training Opportunities, visit our website at [illinoisfloods.org](http://illinoisfloods.org)