

---

# Van Vlissingen Prairie / Marian R. Byrnes Natural Area

## Chicago Park District (Park 562)

### Wetland Restoration & Eco-Recreation

### IAFSM 2016



# CALUMET OPEN SPACE RESERVE PLAN

## LAND MANAGEMENT

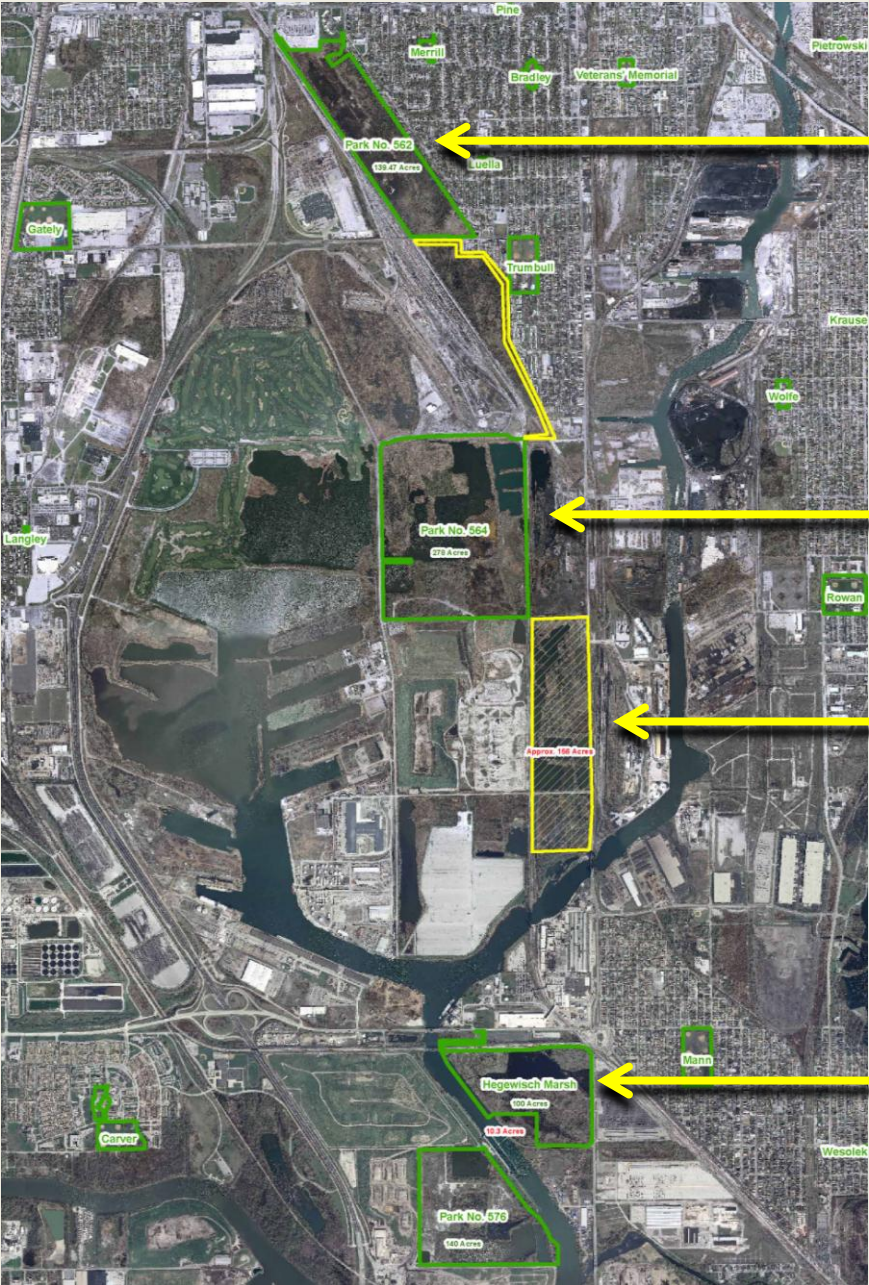
-  COSR Management Units
-  Other Open Space
-  Municipal Boundaries

0 1,000 2,000 Feet

Management Units



# Calumet Open Space Properties



**Van Vlissingen Prairie**

**Big Marsh**

**Indian Ridge Marsh**

**Hegewisch Marsh**

# Regional Context



# Local Context



# Site History

---



1938 Aerial



2013 Aerial

# Site History

---

- **1979: Marian R. Byrnes, a local resident, formed the Committee to Protect the Prairie to block plans by the CTA to build a bus garage over half of the site. Wetlands were identified on the site.**
- **2000: 17 acres donated to City of Chicago related to Jewel/commercial development to the north. North mounds constructed.**
- **2001: 128 acres donated to City of Chicago by Belt Railway as partial wetland mitigation for a Section 404 permit for another Belt Railway property. Small areas of high quality wetland were transplanted to VVP.**
- **2004: Chicago Department of Environment developed concept restoration plans. Not pursued due to a lack of funding.**
- **2010: ComEd 100' easement/construction of transmission towers**
- **2011: Property transferred to Chicago Park District.**

# Site Vegetation

---

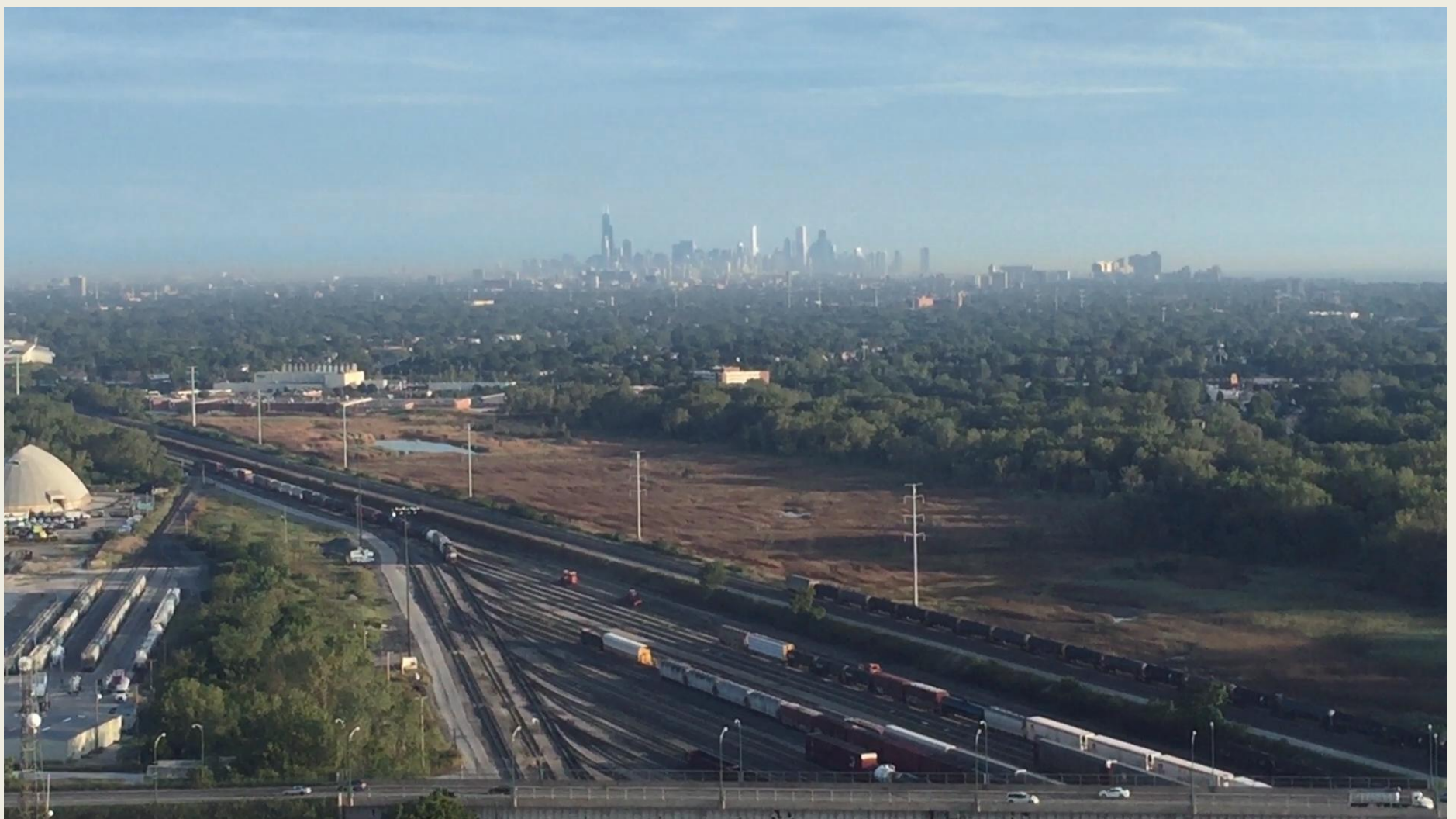


- Site is divided into woodland, wetland and prairie
- Aligns with limits of slag
- 44 acres of emergent & wet prairie wetland
- Phragmites is dominant wetland vegetation
- Woodlands developed on mixed fill material



# The Site Today

---



# Site Photographs

---



Entry prairie at the southeast corner

# Site Photographs

---



Looking towards 103<sup>rd</sup> Street Bridge

# Site Photographs

---



Portion of woodland cleared of understory and buckthorn

# Site Photographs

---



Woodland ponds

1  
0  
3  
r  
d

# Site Photographs

---



Woodland pond and low mounds

0  
3  
r  
d

# Site Photographs

---



View from northern mound looking northwest

1  
0  
3  
r  
d

# Site Photographs

---



Walking up north mound



# Site Photographs

---



Panorama from northern mound looking southwest

# Site Photographs

---



Panorama from northern mound looking south

# Site Photographs

---



**Wetland-prairie transition**

# Site Photographs

---



**Stable wetland hydrology**

# Site Photographs

---



**Prairie vegetation on slag**

# Site Photographs

---



**Panorama looking south along ComEd access road  
View all the way to 103<sup>rd</sup> Street**

1  
0  
3  
r  
d

# Site Photographs

---



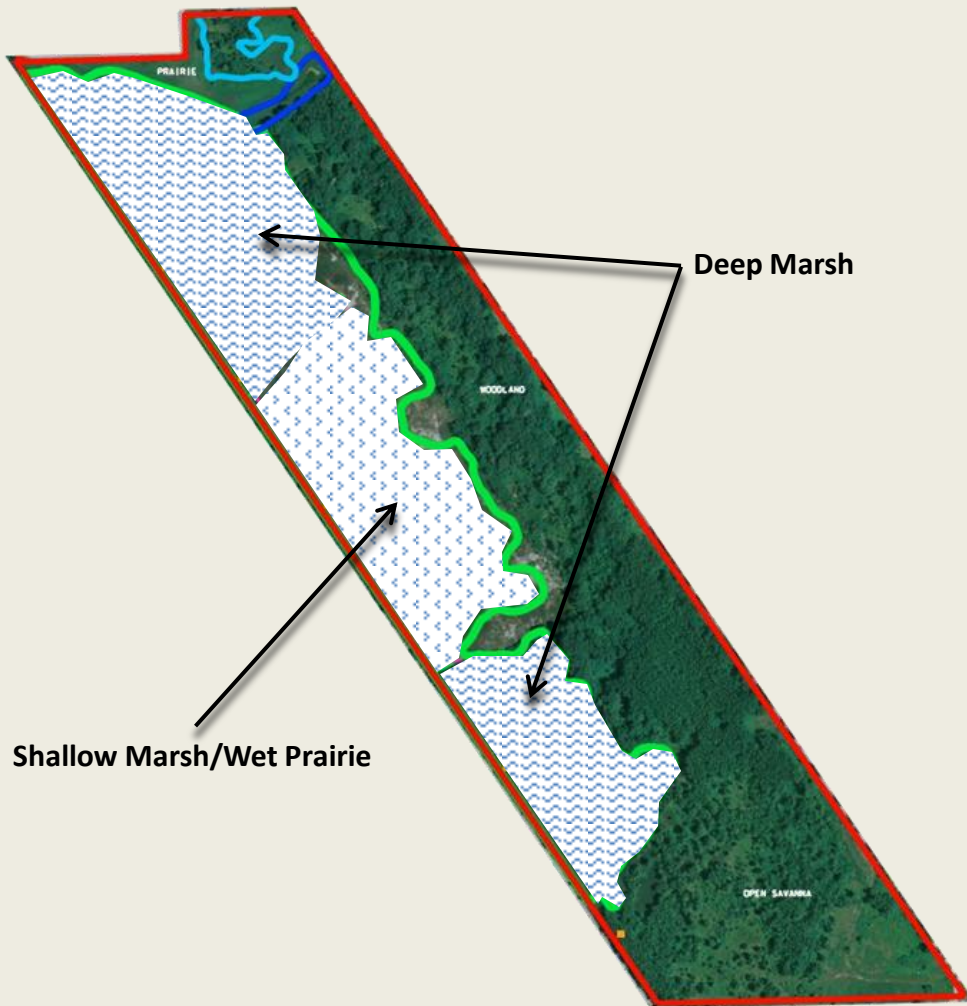
ComEd access road and tower

# Wetland/Habitat Restoration Concepts

- Remove/Control Invasive Species
- Establish native vegetation based on hydrology and soils



# Wetland Restoration



Existing Deep Marsh



Restored Deep Marsh

# Woodland Restoration



Existing Woodland



Restored Woodland

# Wet Prairie / Shallow Marsh Restoration



Existing Wet Prairie



Restored Wet Prairie

# Recreation Concepts

# 30% Concept Park Plan (Altamanu)

## Design Goals

- Create a park residents can enjoy and be proud of!
- Develop a beautiful environment in which to experience nature and play.
- Keep it safe!
- Bring users through the meadows, woods, ponds, wetland, and prairie.
- Balance recreation and restoration.
- Provide elements for all ages.



SCALE: 1"=200'-0"  
0' 100' 200' 400'

# Passive Elements

## Parking Lot

## Trails

- Asphalt / multi-use
- Woodland path
- Boardwalks

## Woodland Allee

## Woodland Ponds

## Sledding Hill / Mound

## Seating

## Art



Boardwalk

Trees in Meadow

Woodland Sculptures

Woodland Pond and Boardwalk

Bleachers

Tables

Woodland Sculpture

Woodland Path

Multi-use Path

Parking Lot

Sledding Hill / Mound

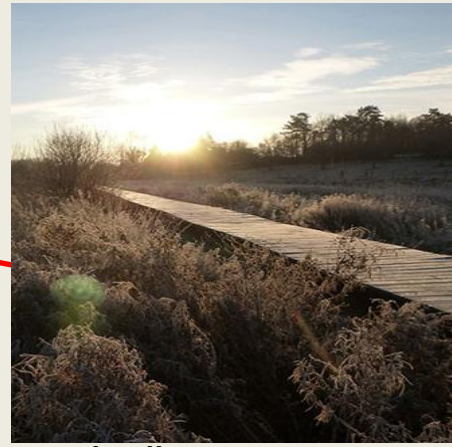
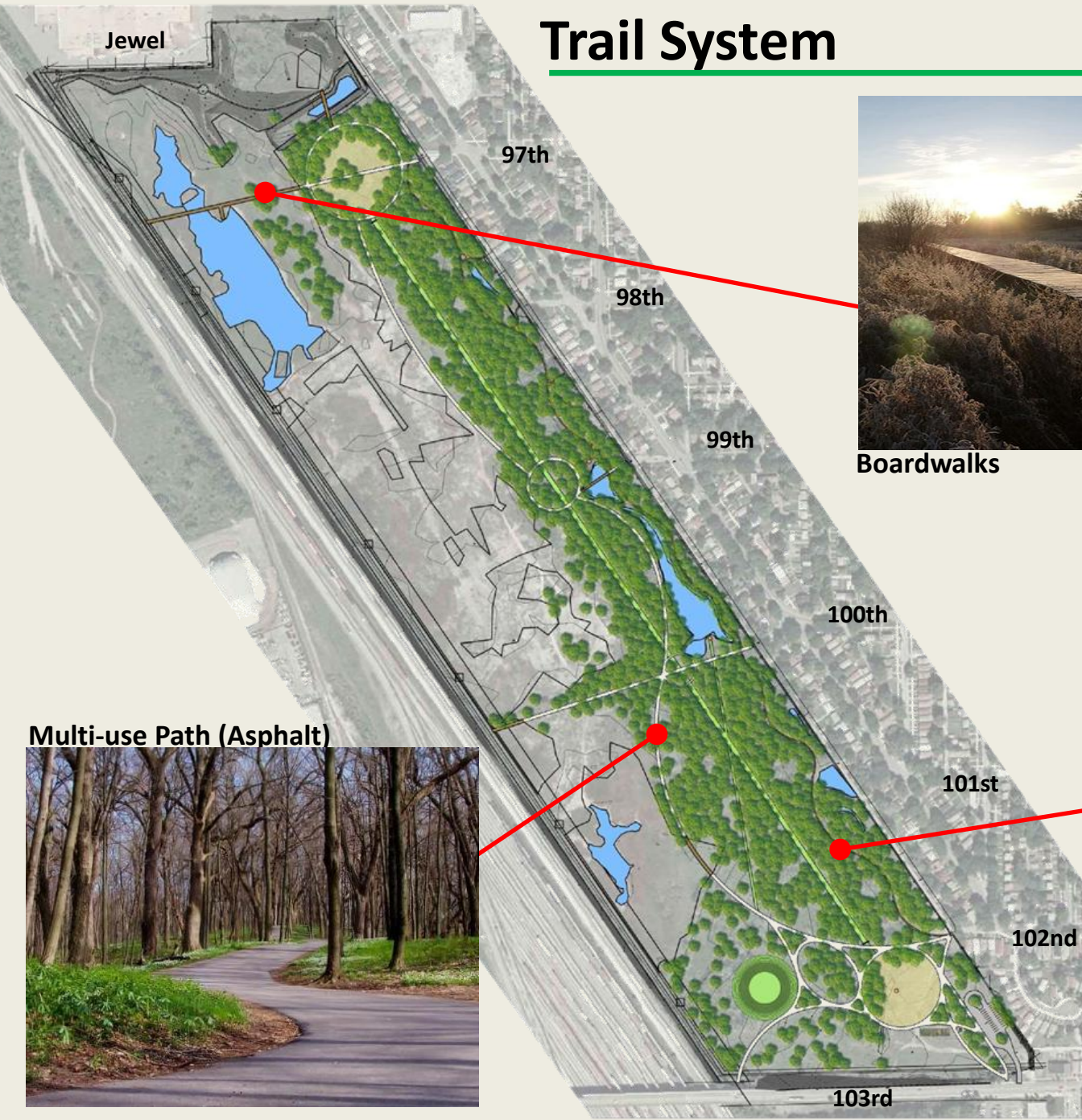
Woodland Allee

Meadow Sculpture

Allee Gateway

Sundial

# Trail System

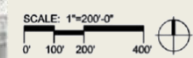


Boardwalks



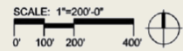
Wooden Path (Mulched)

Multi-use Path (Asphalt)



# Trail System – Woodland Allee

- Supplement to the trail system



103rd



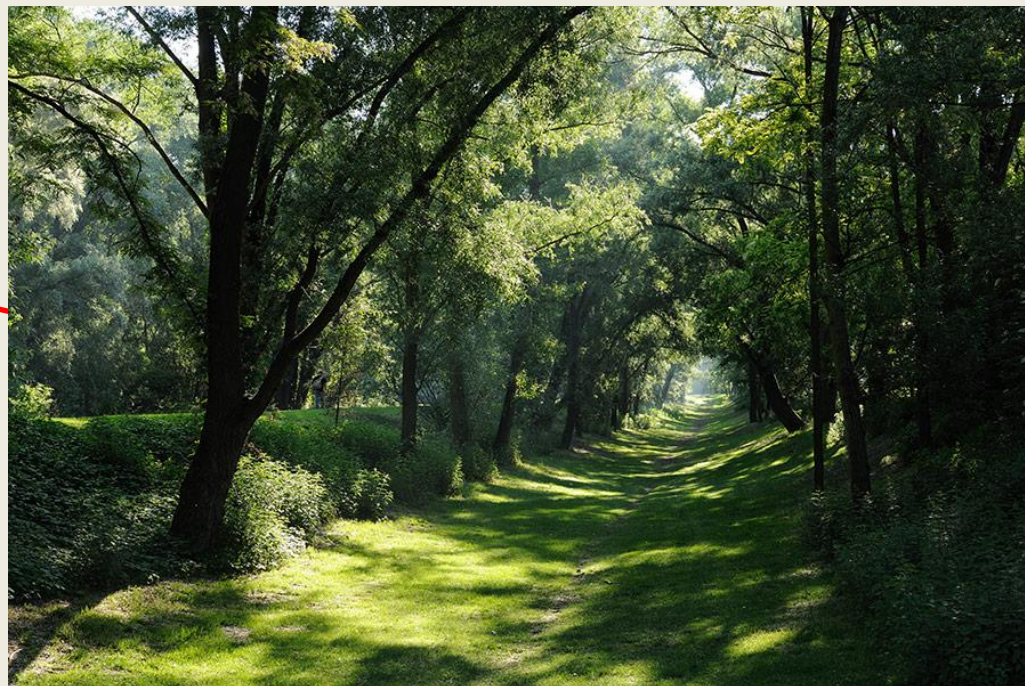
# Woodland Allee



Allee Gateway Sculptures



- Easy to lose direction in woods.
- Allee provides a safe, clear, + direct corridor.
- Event space?
- Spectacular views!



Allee in Summer



In Spring



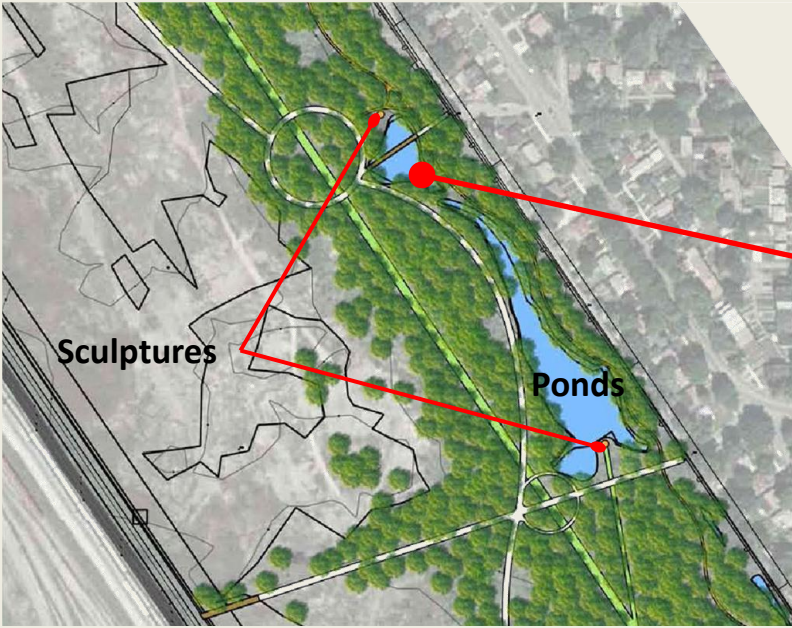
In Autumn

# Woodland Ponds

---



Existing pond



Plan



Potential woodland pond

# Sled Hill / Mound



- Sled hill and overlook mound
- 20' high, flat-topped dome shape



Silbury Hill, England



Potential reinterpretation

# Active Elements

## Community Gardens

## Nature Play

- For ages 2-5
- For ages 5-12
- Climbing boulders
- Zip line

## Obstacle Course

## Woodland Stage

## Multi-use Path

Scattered Obstacles (Ages 12+)



Obstacle Course (Ages 12+)



Climbing Boulders



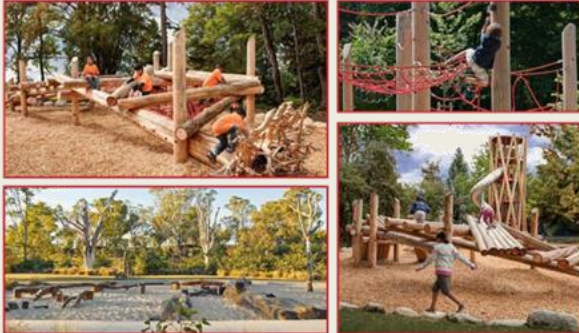
Nature Playground (Ages 2-5)



Sledding Hill / Mound



Nature Playground (Ages 5-12)



Woodland Stage



Multi-use Path



Restroom



Community Gardens



Zip Line



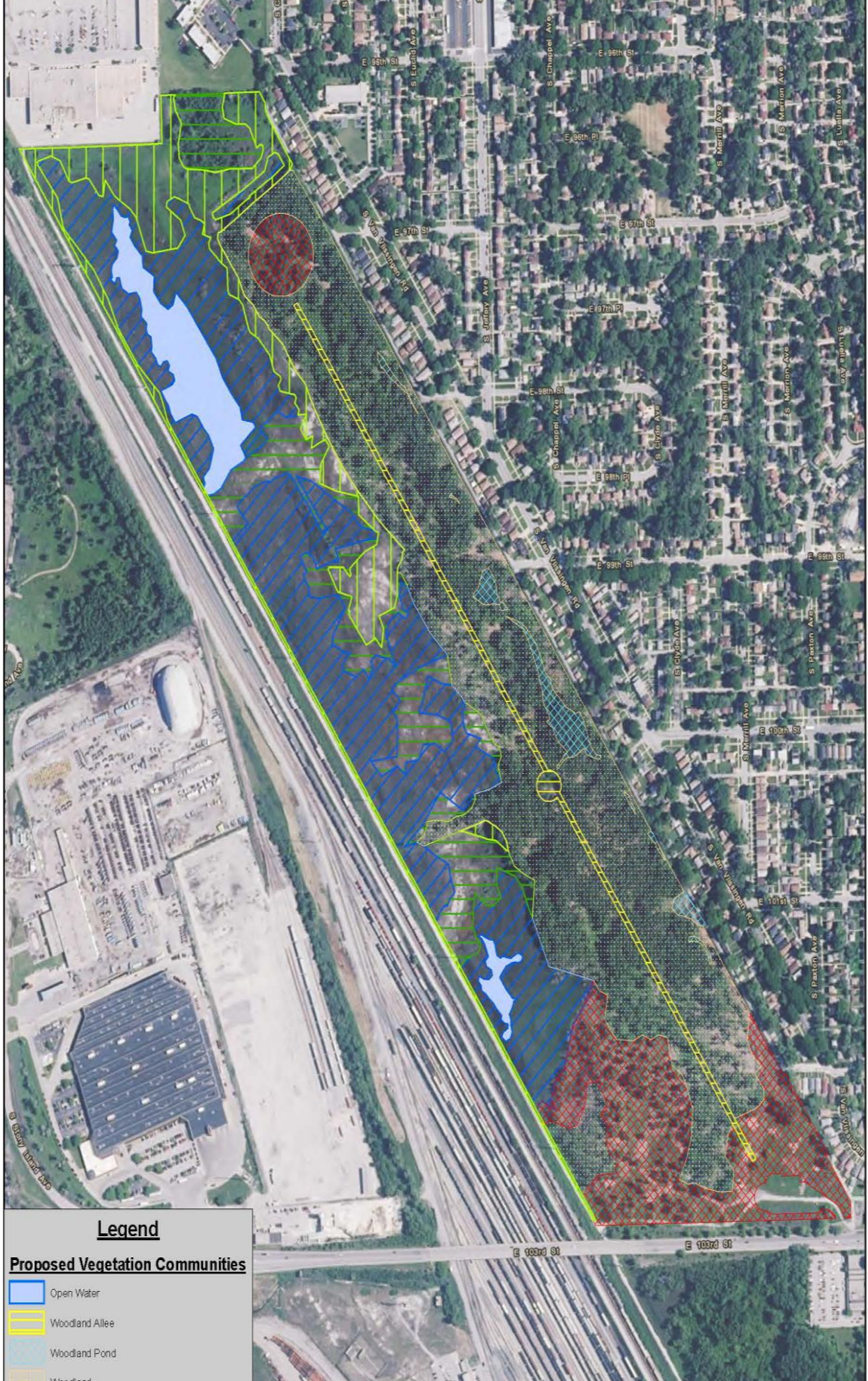
# Project Status

---

- **Woodland clearing conducted by Park District in 2014**
- **Boom spraying of Phragmites started in 2014 and is ongoing.**
- **Prescribed burns to be conducted Spring or Fall 2016. Very difficult site to burn.**
- **Habitat Restoration Plans completed in March 2016, including parking lot and limited hiking trails**
- **Habitat restoration, hiking trails and parking lot construction to commence in 2016.**

# Boom Spraying of Phragmites





**Legend**

**Proposed Vegetation Communities**

- Open Water
- Woodland Alle
- Woodland Pond
- Woodland

# 100% Submittal Plans for: Park 562 - Van Vlissingen Prairie

1735 E.96th Street  
Chicago, IL 60617  
Specification No. P-11007-058

## Owner:

Chicago Park District  
541 N. Fairbanks Ct.  
Chicago, Illinois 60611  
312.742.7529

Rahm Emanuel Mayor

General Superintendent  
Michael P. Kelly

## Schedule of Drawings

C-0.00	Cover Sheet	L-6.00	Overall Planting Plan
C-1.00	General Notes	L-6.01	Proposed Planting Plan
C-2.00	Overall Existing Conditions Plan	L-6.02	Proposed Planting Plan
C-3.00	Existing Plant Communities	L-6.03	Proposed Planting Plan
C-3.01	Tree Clearing Plan	L-6.04	Proposed Planting Plan
C-4.00	Existing Environmental Conditions Plan	L-6.05	Proposed Planting Plan
C-4.01	Site Preparation and Debris Removal Plan	L-6.06	Proposed Planting Plan
C-4.02	Remediation Plan	L-7.00	Plant Lists
C-5.00	Overall Layout and Grading Plan	L-8.00	Planting Details
C-5.01	Detailed Layout and Grading Plan	L-8.01	Planting Details
C-5.02	Detailed Layout and Grading Plan	C-8.02	Construction Details
C-5.03	Detailed Layout and Grading Plan	C-9.00	Concept Future Improvements
C-5.04	Detailed Layout and Grading Plan		
C-5.05	Detailed Layout and Grading Plan		
C-5.06	Detailed Layout and Grading Plan		
C-5.07	Utility Plan		

## Abbreviations & Symbols

AC	Acre	MAX	Maximum
ASTM	American Society of Testing Materials	MGR	Manager
BT	Bituminous	MH	Manhole
BS	Bottom/Step	MIN	Minimum
BW	Bottom/Wall	NO	Number
CA	Compacted Aggregate	NTS	Not To Scale
CB	Catch Basin	OC	On Center
CLR	Clearance	OD	Outside Diameter
CONC	Concrete	PC	Point of Curvature
CONT	Continuous	PI	Point of Intersection
CMU	Concrete Masonry Unit	PSI	Pounds Per Square Inch
DEPT	Department	PT	Point of Tangency
DF	Drinking Fountain	PVC	Polyvinyl Chloride Pipe
DIA	Diameter	QT	Quart
DWG	Drawing	R	Radius
EJ	Expansion Joint	RIM	Rim Elevation
ELEV	Elevation	RENF	Reinforced
EQ	Equal	REQD	Required
ESVCP	Extra Strength Vitrified Clay Pipe	SAN	Sanitary
EXT	Exterior	SPEC	Specification(s)
FH	Fire Hydrant	ST	Stormwater Pipe
FT	Feet	STD	Standard
GA	Gauge	STL	Steel
GAL	Gallon	STN	Stainless
GEN	General	TS	Top of Step
GPM	Gallons Per Minute	TC	Top of Curb
GV	Gas Valve	TPIP	Top of Poured in Place
H	Height	TW	Top of Wall
HP	High Point	TYP	Typical
HYD	Hydrant	VIT	Vitrified
IDEN	Identification	W	With
INFO	Information	WSP	Wooden Service Pole
LBS	Pounds	WV	Water Valve
MANF	Manufacturer's	WWM	Welded Wire Mesh

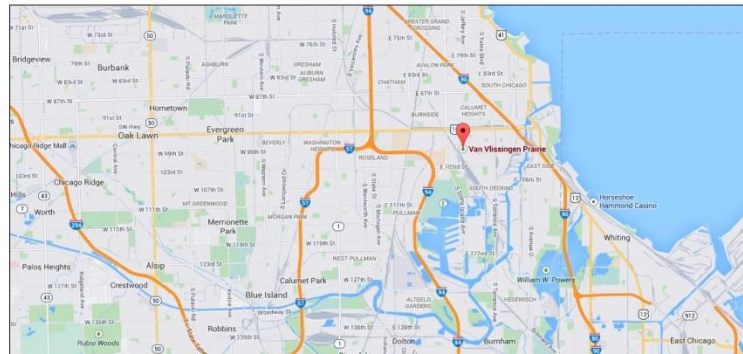
## Engineer



## Landscape Architect

Altamanu Inc.  
landscape architecture + urban design + planning

Altamanu  
1700 W. Irving Road  
Suite 202  
Chicago, Illinois 60613  
773.528.7492



## Site Map

NO SCALE



## Detail Reference

(X)	-Detail Number
(XX)	-Sheet Number

## NOTE:

The exact locations of all utilities shall be verified by the contractor prior to construction activities.

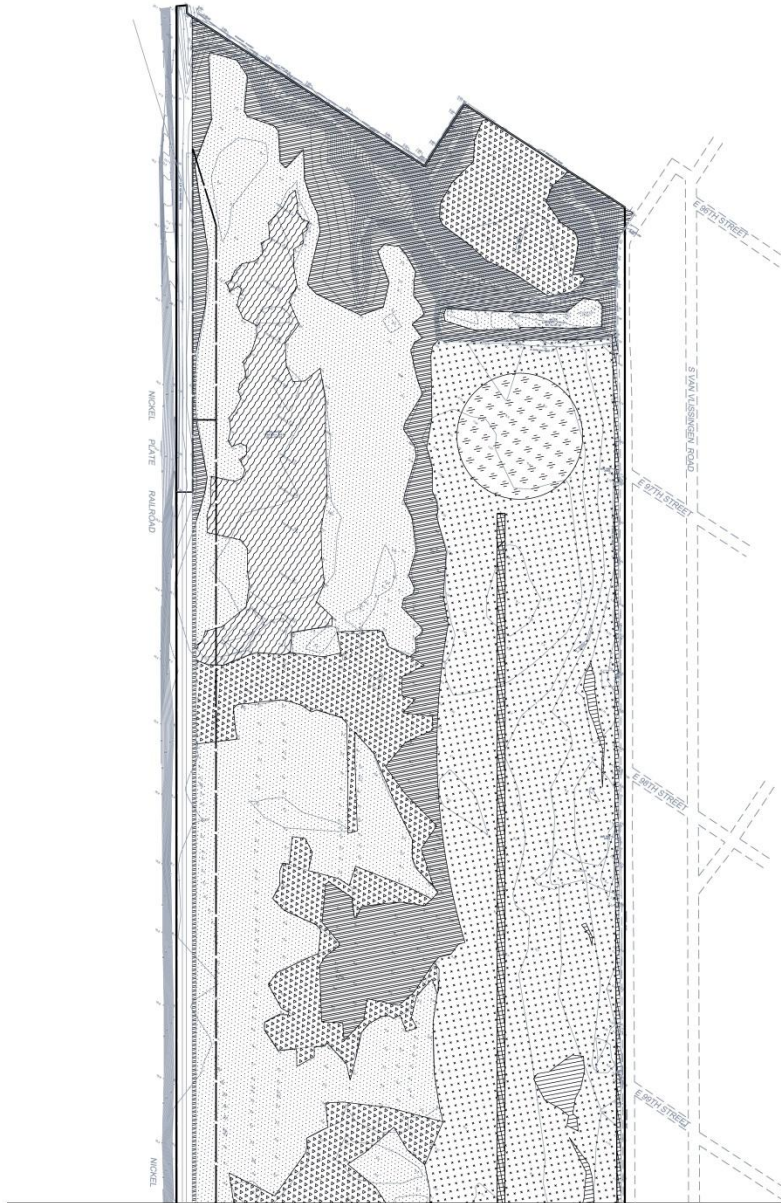
For utility locations call:

**DIGGER 312.744.7000**


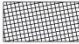


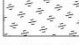



And Chicago Park District Manager.

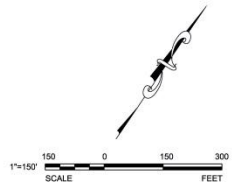
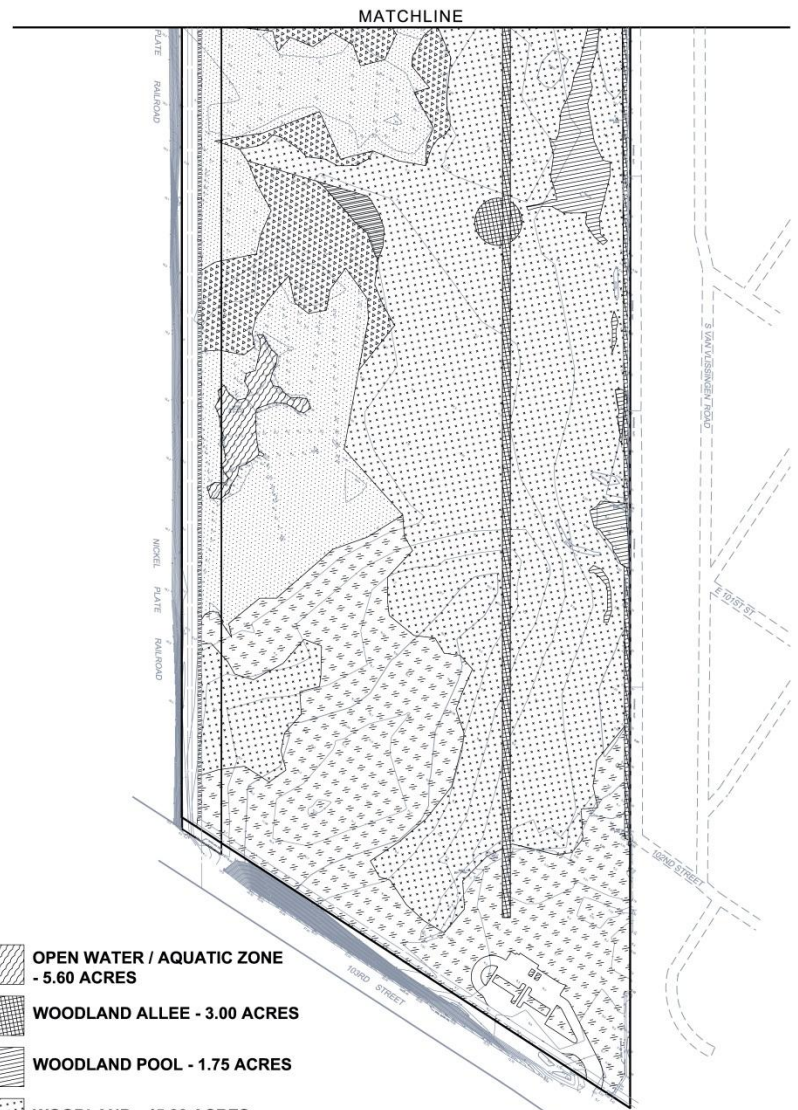
NOT FOR CONSTRUCTION





MATCHLINE

-  **OPEN WATER / AQUATIC ZONE**  
- 5.60 ACRES
-  **WOODLAND ALLEE** - 3.00 ACRES
-  **WOODLAND POOL** - 1.75 ACRES
-  **WOODLAND** - 45.83 ACRES
-  **SAVANNA** - 16.30 ACRES
-  **SHORT GRASS PRAIRIE** - 15.76 ACRES
-  **WET PRAIRIE** - 12.04 ACRES
-  **MARSH** - 31.13 ACRES



1"=150' SCALE FEET

# Chicago Park District Vision: A place for...



**Nature**



**Play**



**Repose**



**Discovery**

---

# QUESTIONS?

