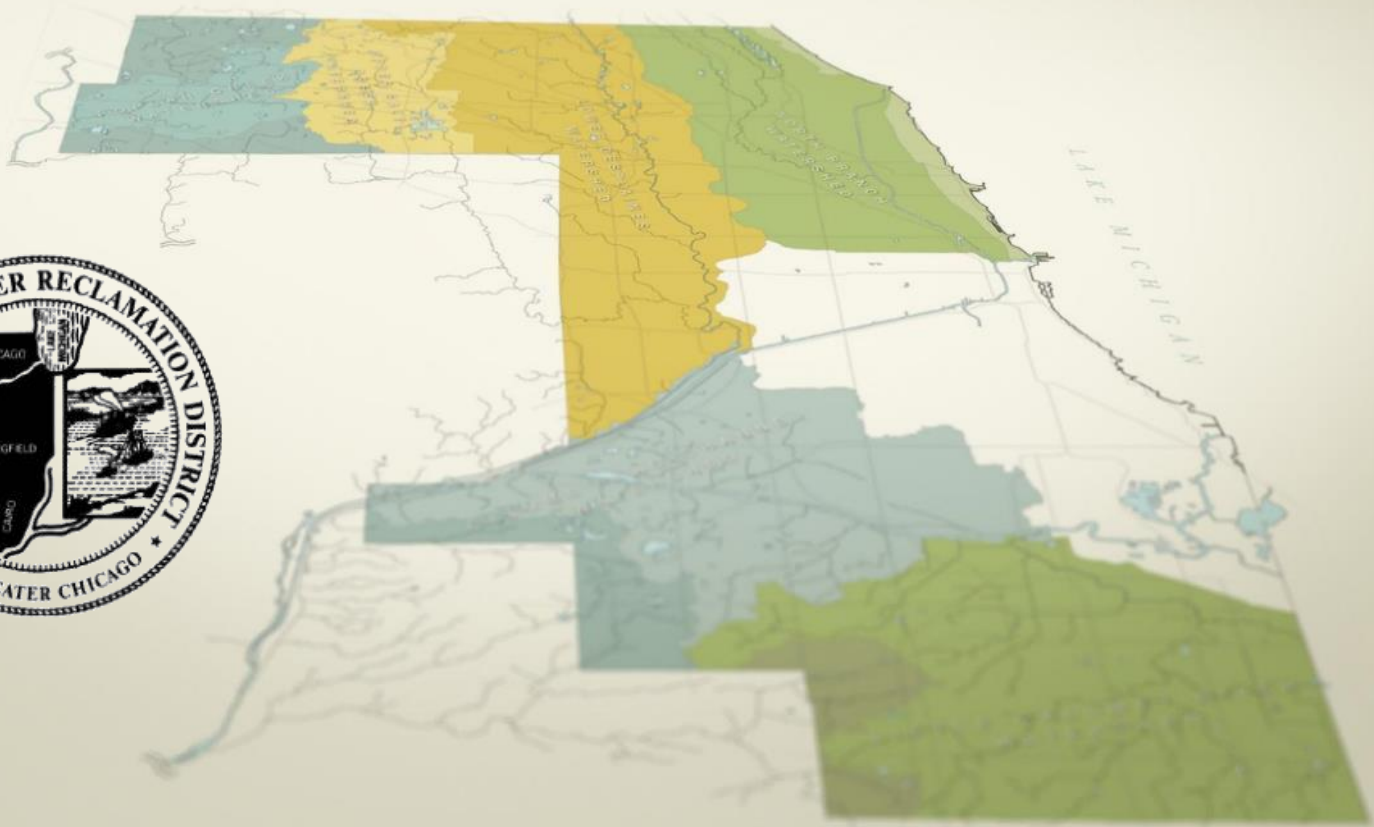


# Partnering to Solve Local Flooding MWRD's Stormwater Masterplans



IAFSM 2016 Annual Conference

March 9, 2016

Metropolitan Water Reclamation  
District of Greater Chicago

# Stormwater Management, Green Infrastructure, Tunnel and Reservoir Plan and Flood Control Projects and Facilities



### Legend

- Stormwater Management Phase 1 Project
- Stormwater Management Phase 2 Project
- Flood Control Reservoir
- Green Infrastructure
- ★ Flood Prone Property Acquisitions
- Tunnel and Reservoir Plan Tunnel System
- Tunnel and Reservoir Plan Reservoir
- Cook County



## **Five Stormwater Masterplans**

One in each of the four Counsels of Government Of Cook County and one in Chicago. The study areas were selected by the counsels and the City.

The studies investigate urban flooding issues and develop conceptual green and gray infrastructure solutions.

The project will assist MWRD and the five partnering communities and residents by developing a community-based and supported plan to address local flooding.

The project teams are reaching out to residents in these communities about how flooding impacts their lives and gauge the public's attitudes toward public and private alternatives.

Customized questionnaires were developed and distributed to private property owners within the study areas, requesting input on flooding issues. These questions were based on initial discussions with these communities. The survey results will help create an understanding of the preferences of community residents and possibilities for solutions.

Through this public engagement, residents have the opportunity to make a difference in how their communities address flood problems.



## **Chicago - Geosyntec**

Matt Bardol, PE, CFM, CPESC, D.WRE – Geosyntec Consultants  
Rebeca Bell - Bluestem Communications

## **Harwood Heights – Cardno**

Heather Schwar, PE – Cardno  
Mark Wagstaff, PE – M3 Engineering Group  
Eli Cosky – Metro Strategies

## **Little Cal / Cal-Sag – Arcadis**

Gunilla M. Goulding, PE – Arcadis  
Mark VanAuken, PE – Arcadis

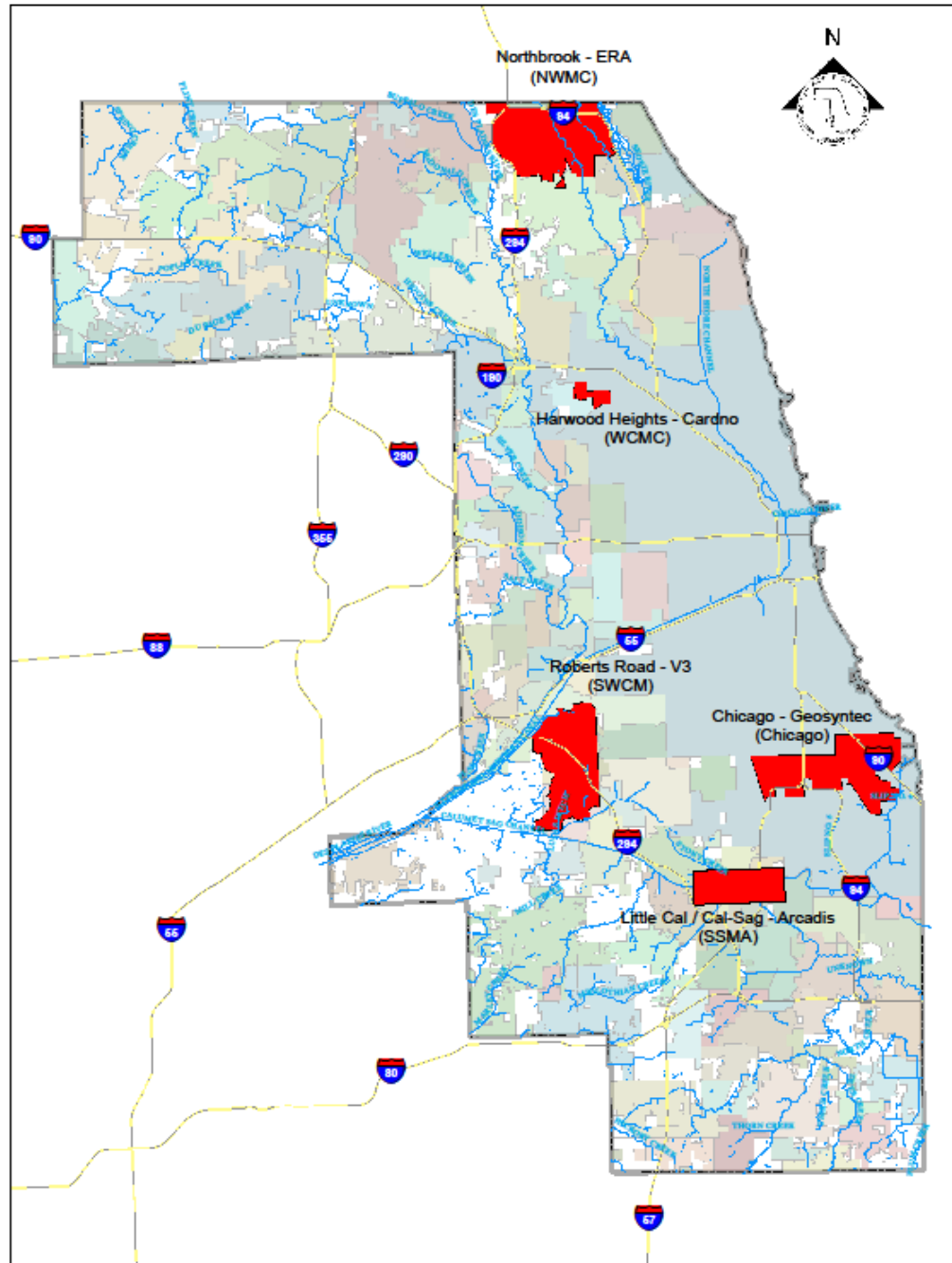
## **Northbrook – ERA**

John Mayer, PE, CFM – ERA  
Marty Michalisko, PE, CFM – ERA  
Jenny Loewenstein, PE, CFM, CPESC – ERA

## **Roberts Road – V3**

Jennifer Maercklein, PE, CFM – V3  
Rebeca Bell - Bluestem Communications

# MWRD STORMWATER MASTERPLAN STUDY AREAS





# Questions?

## Contact Information:

Richard Fisher, P.E.  
Senior Civil Engineer  
Stormwater Management  
MWRDGC

111 E. Erie St., Chicago, IL 60611

(312) 751-5479

[fisherr@mwrdd.org](mailto:fisherr@mwrdd.org)