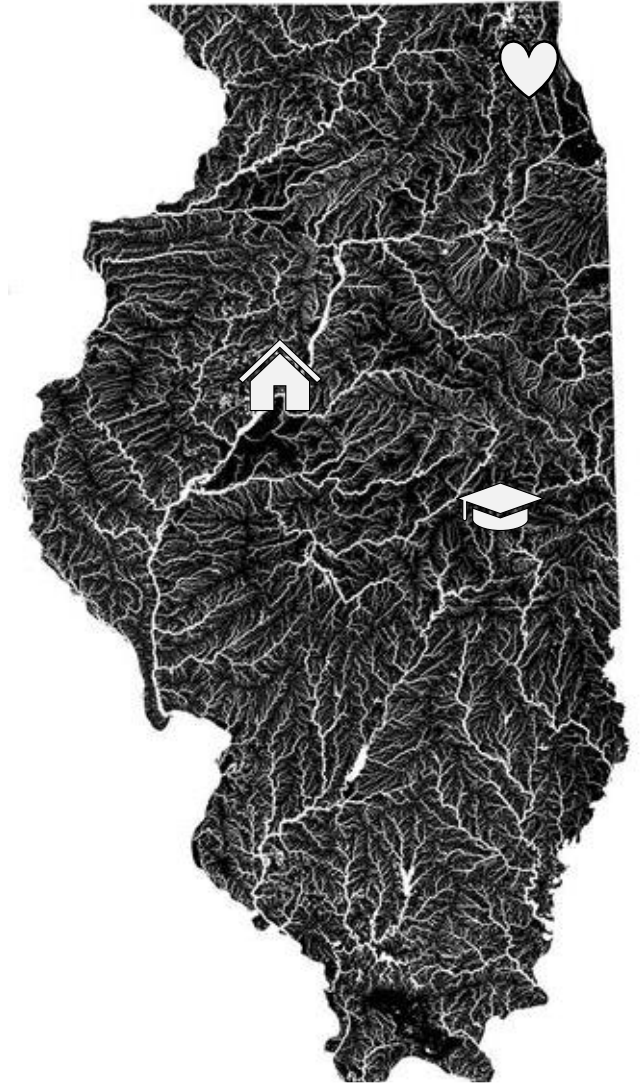


# WHAT I WISH I KNEW

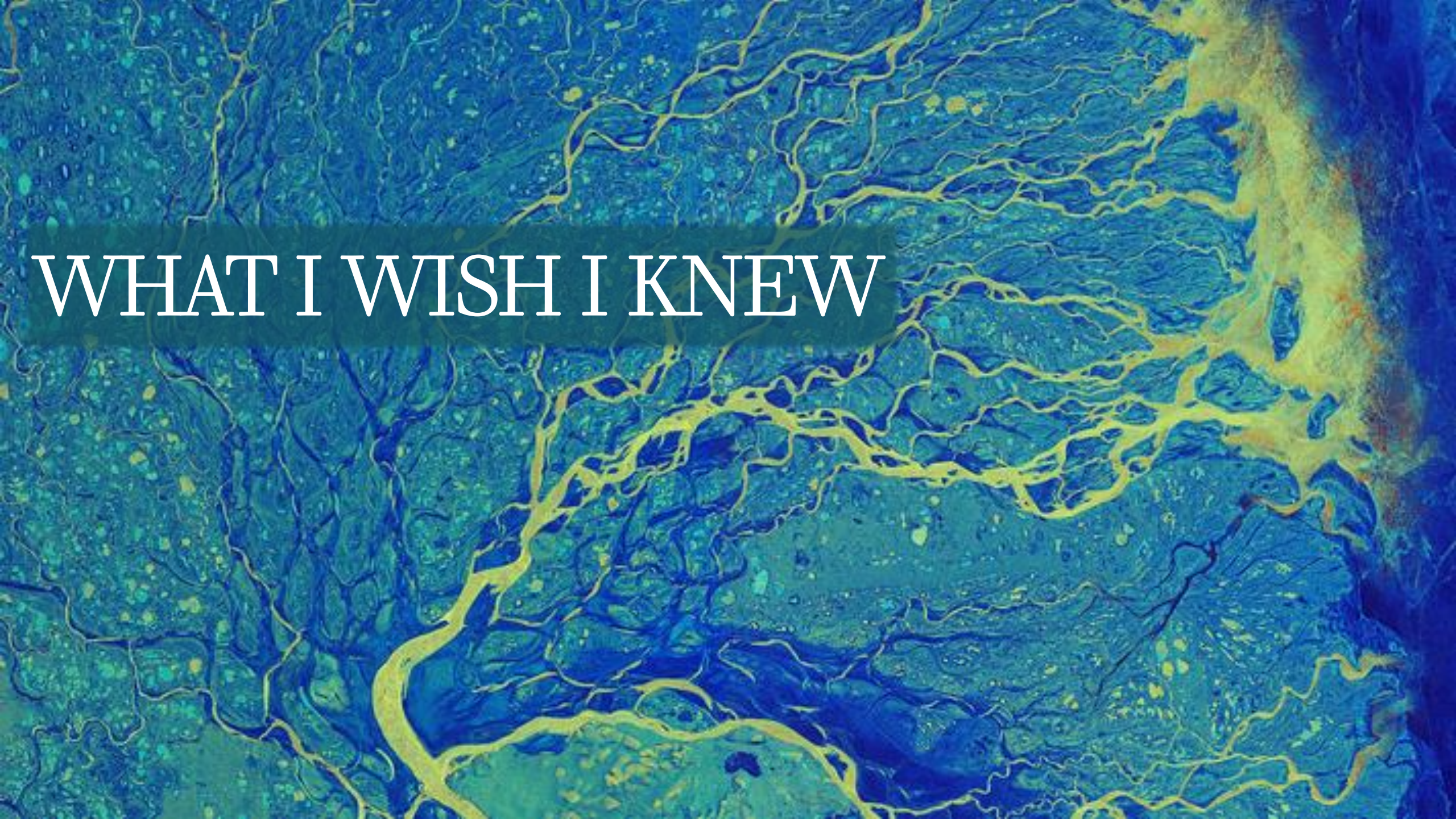
Strategic career planning for new engineers





**I** ILLINOIS





WHAT I WISH I KNEW



# ADVICE FOR BEING “YOUNG”

- 1) Resume
- 2) Interviewing
- 3) Networking





# CAREER ASSETS

A photograph of two orcas swimming underwater in clear blue water. The orcas are black and white, with the white patches clearly visible on their heads and chests. They are swimming towards the right side of the frame. The water is a deep blue, and there is some light reflecting off the surface in the upper left corner.

RESOURCES

KNOWLEDGE

INFLUENCE

# CAREER STRATEGIES

## YOUNG PROFESSIONAL

- Seize opportunities **as they appear**
- Initiate **individualized** Opportunities
  - Your **personal experiences** to-date

## MID-SENIOR PROFESSIONAL

- Scan Market Landscape for Opportunities
- Initiate Significant Opportunities based on knowledge of :
  - Long-Term **Client Relationships**
  - Familiarity with **Market Landscape**
  - Familiarity with **Capabilities**
  - Technical **Intuition**



An aerial photograph showing a dense green forest on the left and a bright blue lake on the right. A thin, faint rainbow is visible in the water, stretching from the forest edge towards the right. A dark teal banner is positioned in the top left corner.

# INFLECTION

Where do you want to go?

How will you get there?



# DEFINING CHALLENGES

A clownfish with orange and white stripes is swimming in a sea anemone with long, greenish-yellow tentacles. The background is a close-up of the anemone's tentacles.

Limited Authority

Small network

Short resume

Developing  
Intuition

Waiting for  
Opportunities



# TEMPORARY ADVANTAGES

- Short Resume
- Broad Possibilities
- Flexibility
- Access to mentors
- Unique Connections
- Young Professionals Initiatives







NETWORKING

& CRAFTING YOUR BRAND



# NETWORKING



(AND NOT COMING OFF LIKE A SALESPERSON)





# HARD TIMES

- Why were you hired?
- What can you do better than others?
- What tasks make sense for you compared to others?
- What tasks fit that description and will pay off long term?
- Attitude
- Reputation



An aerial photograph showing a dense, dark green evergreen forest on the left, which meets a bright turquoise lake on the right. A faint rainbow is visible in the water near the shoreline. The text 'PLAN FOR INFLECTION' is overlaid in white serif font on the forest area.

# PLAN FOR INFLECTION

- Choose when to narrow
- Edit your personal brand
- Tailor your resume
- Consider Certifications
- Be prepared to change tactics



# TRACK YOUR ACCOMPLISHMENTS

A group of dolphins swimming in clear blue water, viewed from below. The dolphins are scattered throughout the frame, some swimming towards the camera and others away from it. The water is a deep, clear blue, and the dolphins' sleek, grey bodies are clearly visible against the background.

- Periodically you will be asked to complete a resume, justify asking for a raise, etc.
- Pull this out on demand



ENJOY  
IT!





QUESTIONS?





*EXTRA SLIDES*

























FLASHBACK TO 2017