

# Alexander County Needs a Little R&R

Community Recovery and Rebuilding after the 2011 spring floods

Beth Ellison, Southern Illinois University - Carbondale



IAFSM  
March 14-  
15, 2012





# Outline



- Spring 2011 Flooding
- Deciding that something must be done!
- Taking the first steps...
- Progress
- Struggles
- Lessons learned thus far

# Spring 2011 Flooding

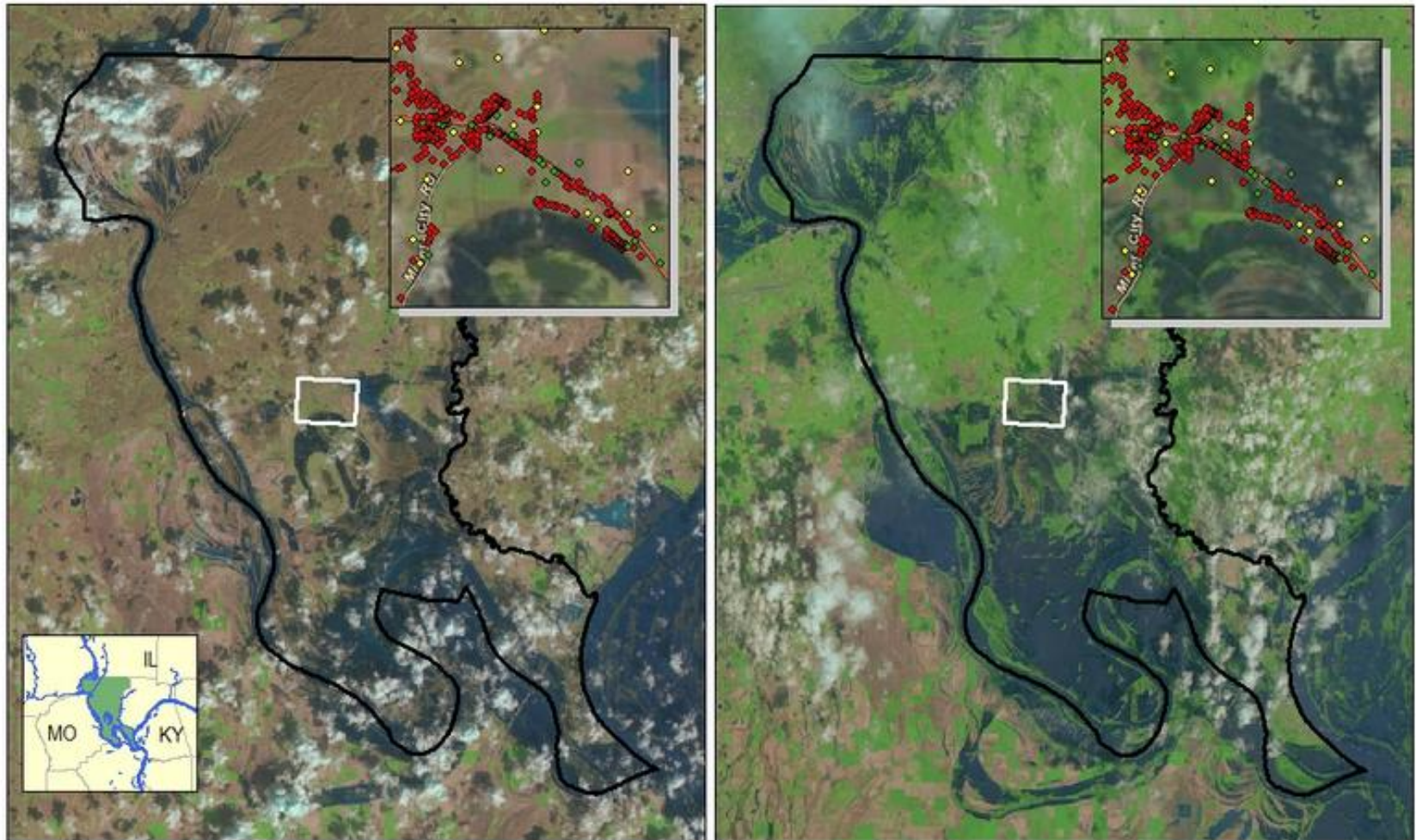
- Heavy precip across UMR
- Cairo – mandatory evacuation/Highway 3 closed
- May 3 - levee breach
  - 5 known breaches on Lens Small Levee system





# SATELLITE IMAGERY OF SOUTHERN ILLINOIS FLOODING

The images below show the extent of flooding in Alexander County, IL. The Images on the left are pre-flood (March 24) and the images on the right are near-peak flood levels (May 11). No satellite imagery was available at peak flood (May 4).

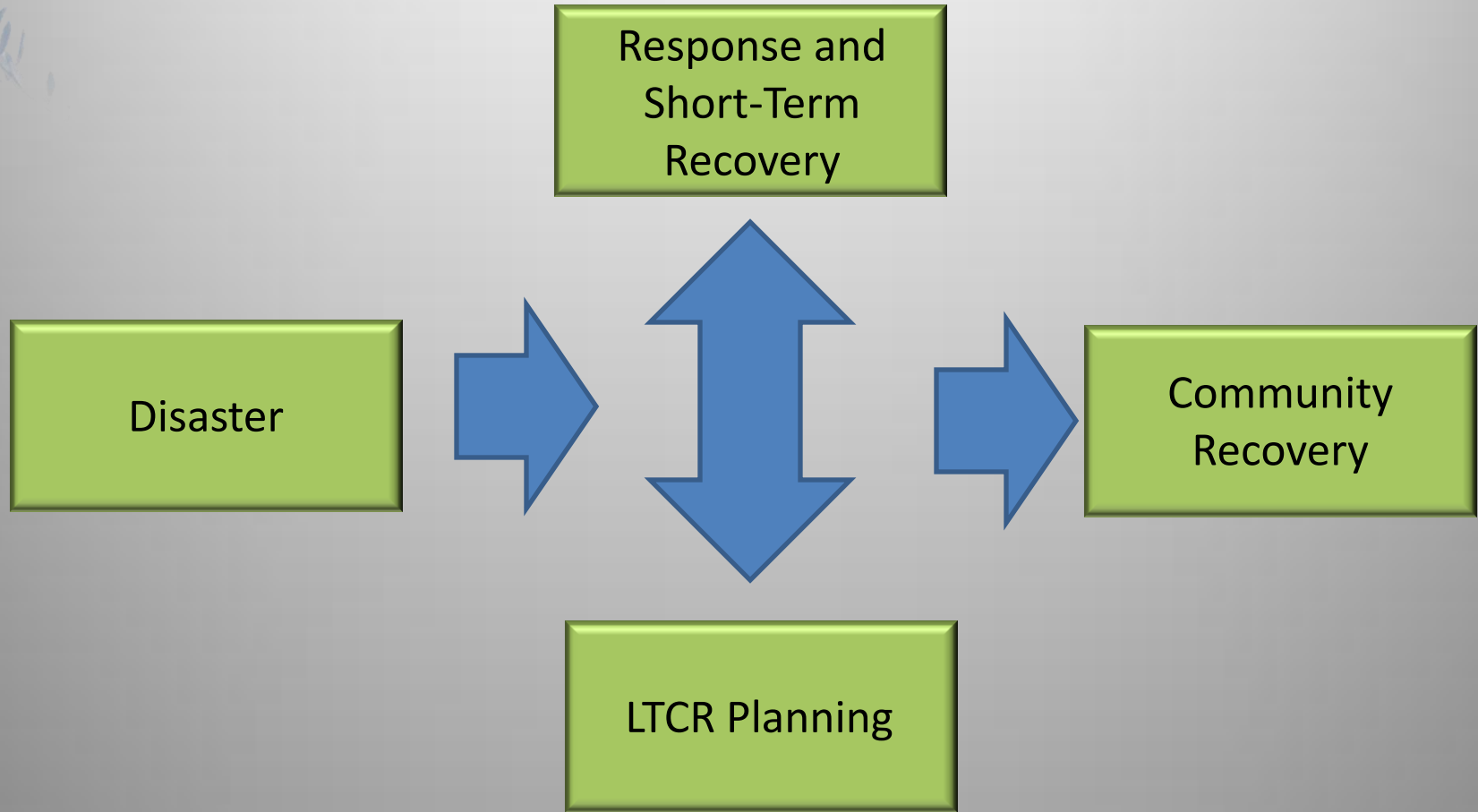


Southern  
Illinois University  
Carbondale

Created by Southern Illinois University - Carbondale on 5/26/2011. Any questions contact [beth.elison@siu.edu](mailto:beth.elison@siu.edu).



# Deciding that something must be done!





# Deciding that something must be done!

- How did SIUC get involved?
- July 5 Public Meeting
  - Over 500 people!



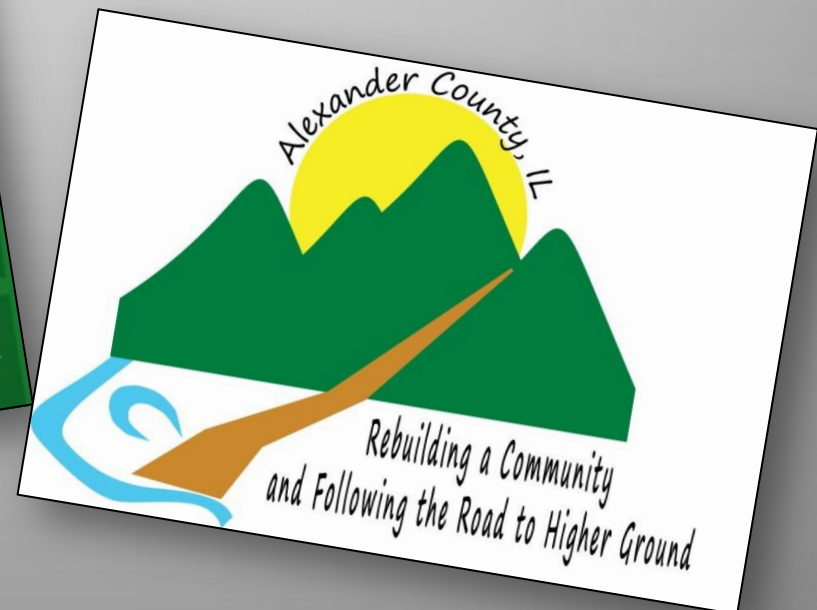




# Deciding that something must be done!



- Individual household meetings
- Community survey



# Taking the first steps...

- FEMA Hazard Mitigation Application
  - Property acquisitions & home elevations
- Create Community Planning Team
  - Strategic Vision
- State and Federal Partners Meeting
  - Oct 22, 2011







# Progress

- FEMA is working on our application
- Land Agreement
  - Hopefully DCEO funding
- Funding from the Walton Family Foundation
  - Disaster Tour
  - Design Charette



# Disaster Tour

- March 3-6, 2012
- Community planning team
- Toured: Greensburg, KS; Joplin, MO; Valmeyer, IL






# Struggles

- Politics.
- Displaced persons & “plucking” of the population
- Timing
- Politics.





# Lessons Learned Thus Far

- 
- TIMING IS KEY
  - Our initial approach...
  - We are not urban planners
    - But we make it happen!



# Interested in the project?

## Alexander County 2011 Mitigation

Welcome! | [Flooding in Alexander County](#) | [Announcements](#) | [What You Need To Do!](#) | [You Ask. We Answer.](#) | [Event Calendar](#) | [Moving to Higher Ground](#)  
[Contact Us](#)

### Moving to Higher Ground

"Make no little plans; they have no magic to stir men's blood and probably will themselves not be realized. Make big plans; aim high in hope and in action; make the effort even if you know you may fail. The great ones in the world are those who have seen the possibilities that only come from great dreams. Be sure to dream, for the future is not ours until we create it."  
-Daniel Burnham, planner and architect who developed the Plan for Chicago in 1909

#### Long-Term Recovery in Alexander County

The unincorporated communities of Alexander County are sick and tired of the yearly flooding. Instead of rebuilding homes, residents are interested in moving to higher ground. Alexander County is working with SIU to make this vision a reality.

The Long-Term Community Recovery (LTCR) process begins by recognizing that something NEEDS to be done. The County recognizes that buyouts and relocation efforts are two of the best options available to the community.

The application for buyouts is about to be submitted to FEMA whereby efforts can be refocused to the full-scale planning of a new town location.

The County is putting together a planning team that will develop a Long-Term Recovery Plan for the county to move forward with the relocation efforts. This 13-step process is clearly outlined and will be guided by SIU with their expertise and connections to resources. The 13-step process will take approximately 10 weeks. If you are interested in being part of this planning team, please contact [Twyla Wareing](#) or [Beth Ellison](#).

If you are not interested in being part of the planning team, we would still love your input. Please take a brief community survey to provide feedback to assist in the LTCR plan development.



Take a quick survey to give your input on continuing efforts!

[Building a Better Community!](#)

Your Visions are Boundless

Google  
"Alexander  
County  
Mitigation"

**ACT NOW**  
*Are You Ready For The Next One?*





# Questions



**Beth Ellison**

Southern Illinois University – Carbondale

(618)453-7349

Beth.ellison@siu.edu