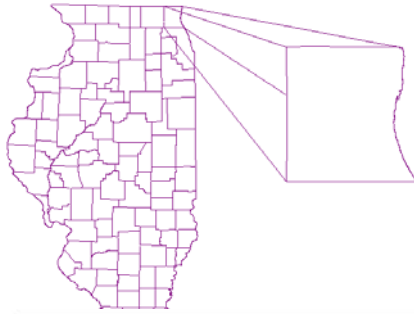


The Big Move: **Transitioning from Watershed Planning to Watershed Plan Implementation**

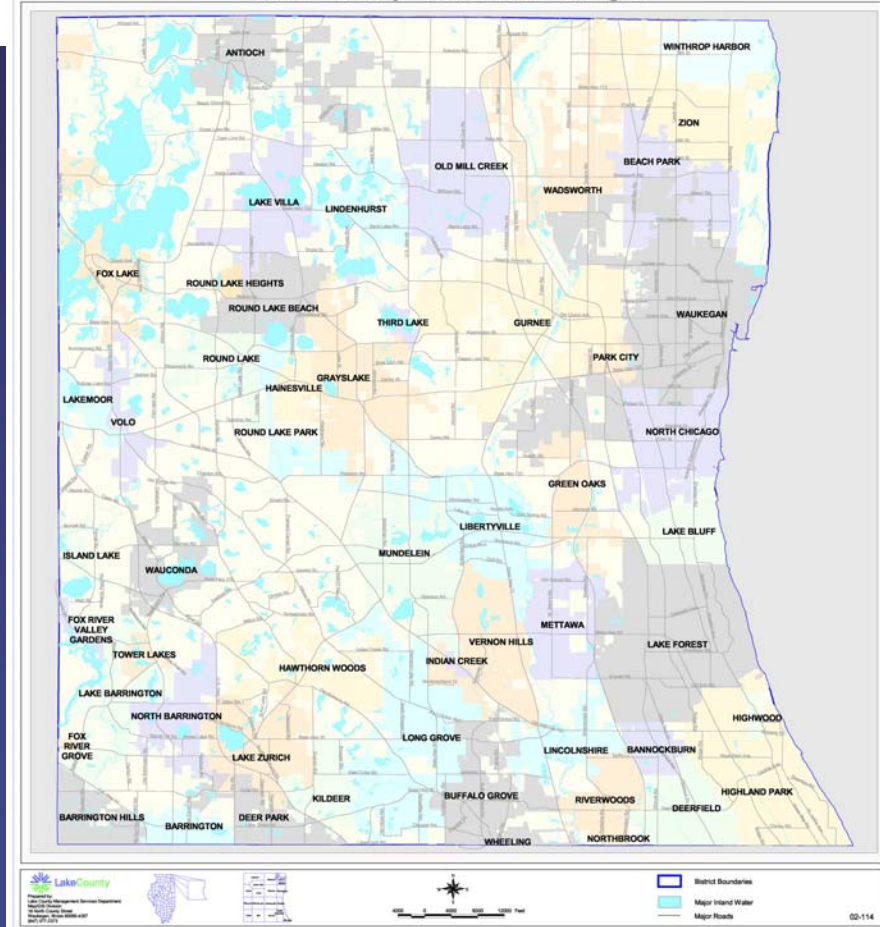
Patricia Werner AICP, CFM, **Planning Supervisor**





Lake County, Illinois

Lake County - Cities and Villages



470 Square Miles

30% of surface area is
water resource or
floodplain

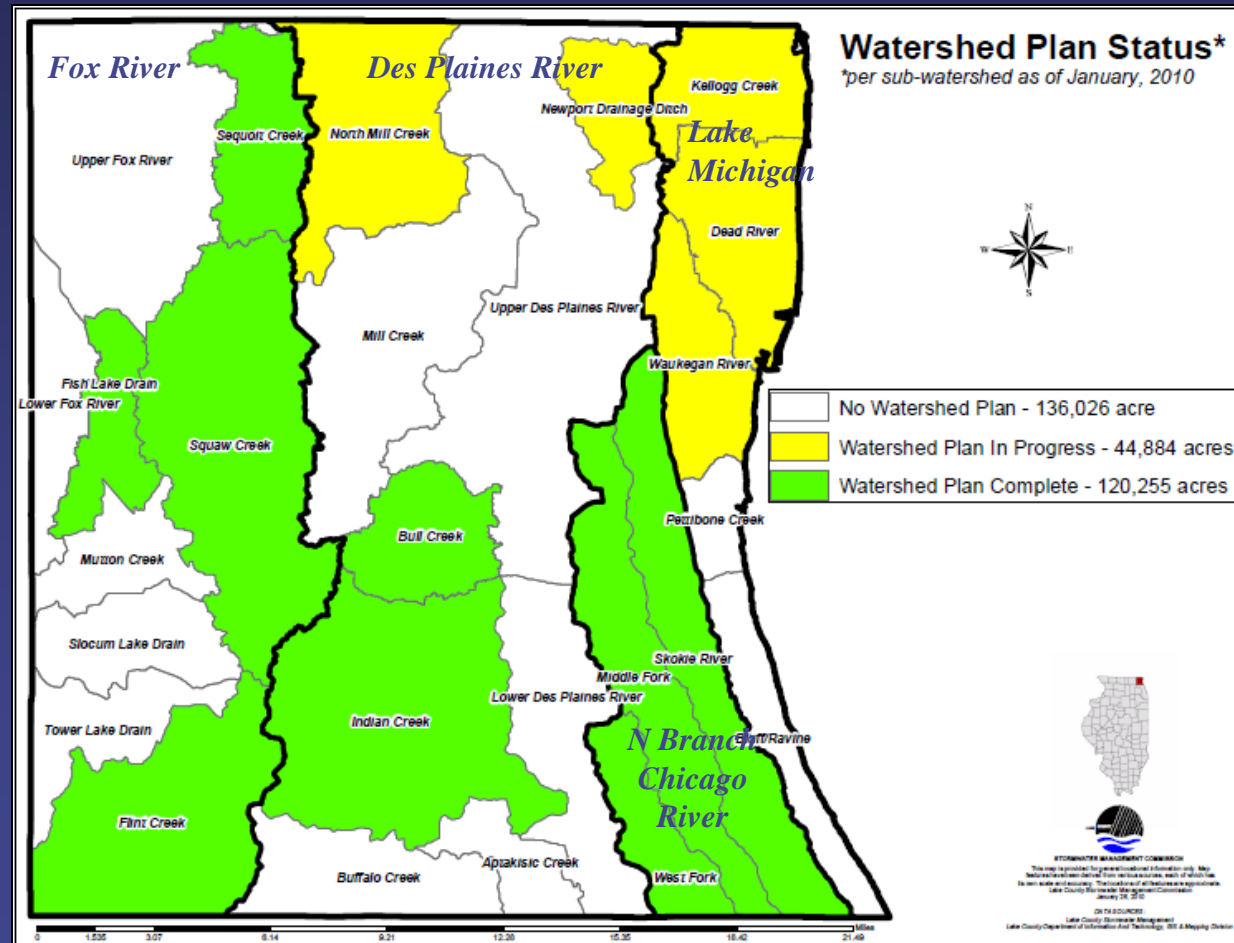
55% Incorporated

Municipalities: 52

Watershed Planning Status

- 14 watersheds complete or underway
- 10 Plans managed by SMC
 - 8 Watershed-Based Plans
- 2 Plans managed by others

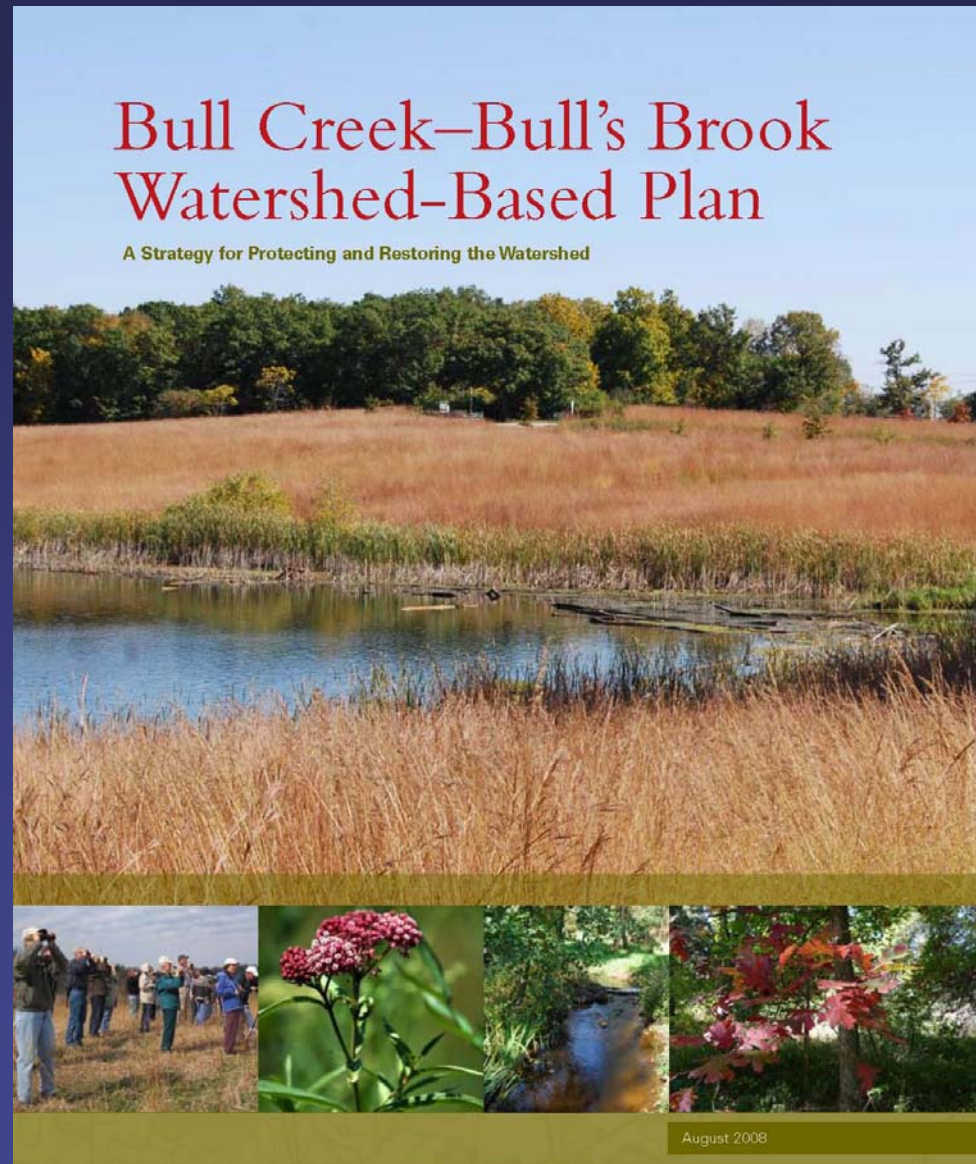
26 Lake County Subwatersheds



Watershed Management Planning

Stakeholder Based

- Political leaders
- Residents
- Businesses
- Nonprofits
- Government agencies



Who Are Watershed Stakeholders?

- Those who will make decisions
- Those who will be affected by them, and
- Those who can stop the process if they don't agree

From: Getting in Step: Engaging and Involving Stakeholders in Your Watershed

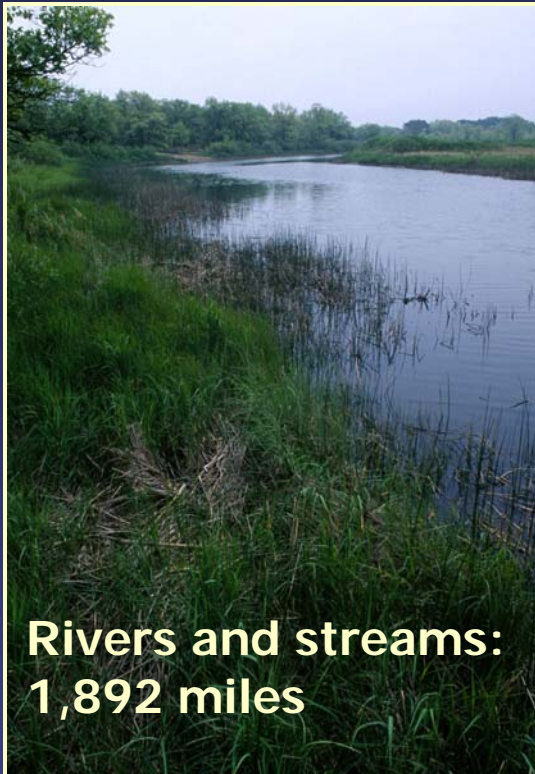
Stakeholder Interests

Flood Damage

\$5.2 million per
year estimated
average annual
damages



Water Resources



**Rivers and streams:
1,892 miles**



**190+ inland lakes
16,895 total acres**



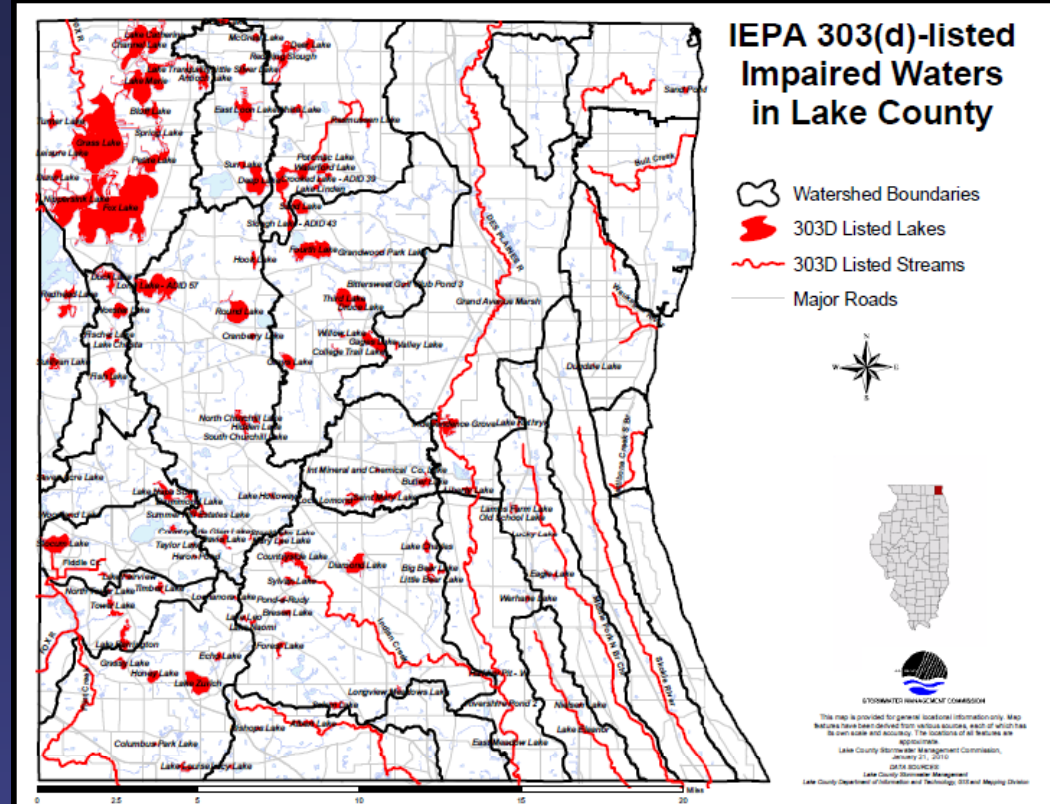
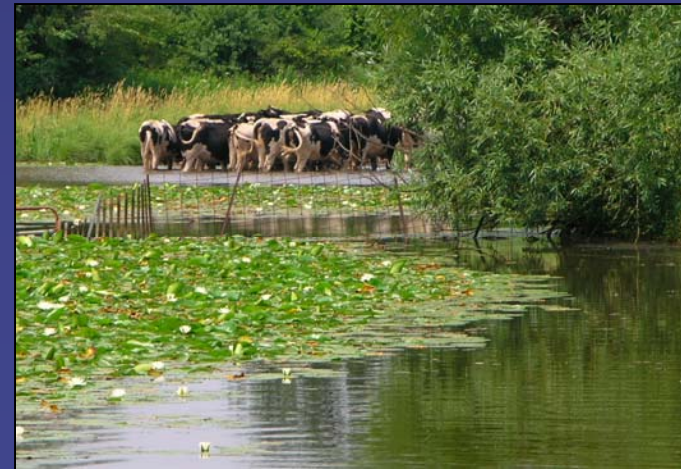
Wetlands: 61,495 acres



**Lake
Michigan
shoreline:
29 miles**

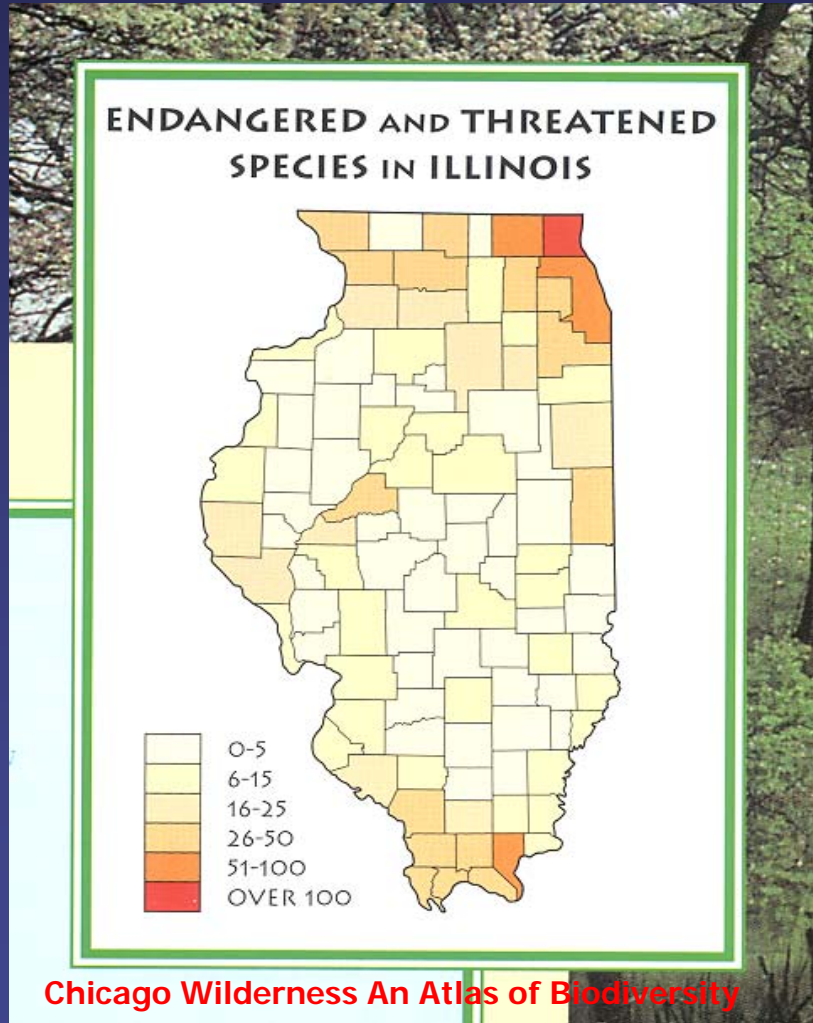
Water Quality

Mostly "Fair"...
moving toward "Poor"



Natural Resources/Biodiversity

Lake County is home to more than 130 threatened and endangered species



How Do We Reach Stakeholders?

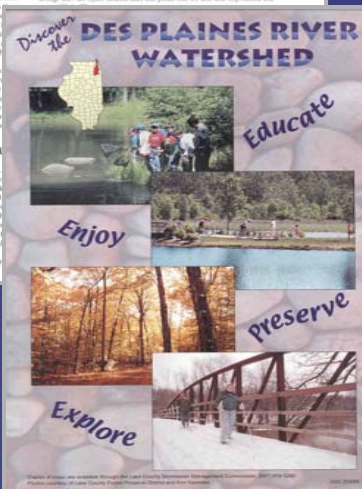
- 1st invitation by US mail
- Subsequent communication via email, fax or snail mail
- Planning partners help recruit strong members
- Personal invitation (phone call) &/or personal meeting
 - Key stakeholders
 - Community influentials

[Community not participating? \Rightarrow sometimes we request they host a planning meeting]

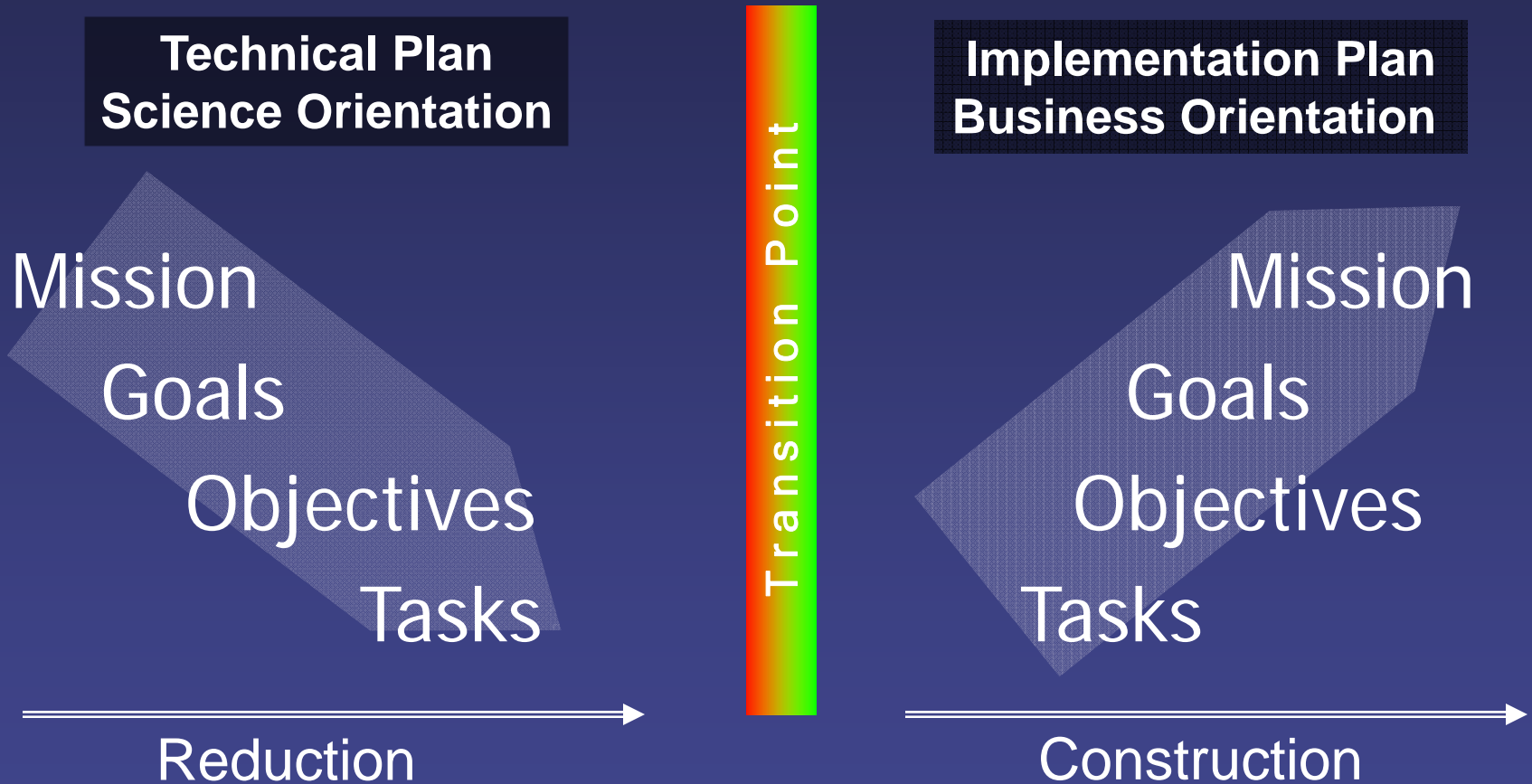
Building “Watershed” Awareness Public Information/Education

⇒ start early - don't wait until your plan is done

- ✓ Raises awareness of watershed issues
- ✓ Garnerers support for plan implementation



Planning to Implementation Transition



Watershed Plan Implementation Case Studies

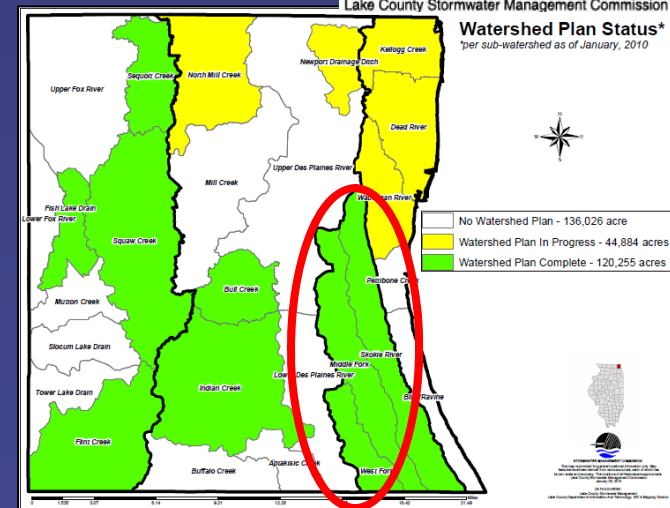
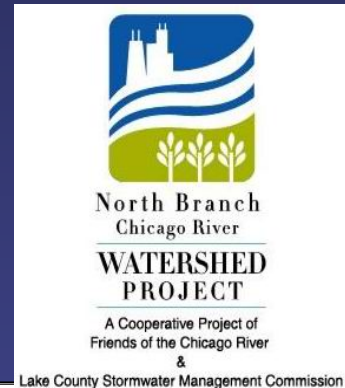
- North Branch Chicago River (2000 – Watershed-Based Plan (WBP) upgrade 2008)
- Indian Creek (2004 – WBP upgrade 2008)
- Bull Creek-Brook (WBP 2008)
- Dead River & Kellogg Creek (WBP 2009)
- Fish Lake Drain (2004 – WBP upgrade 2008)
- Flint Creek (WBP 2008)

North Branch Chicago River

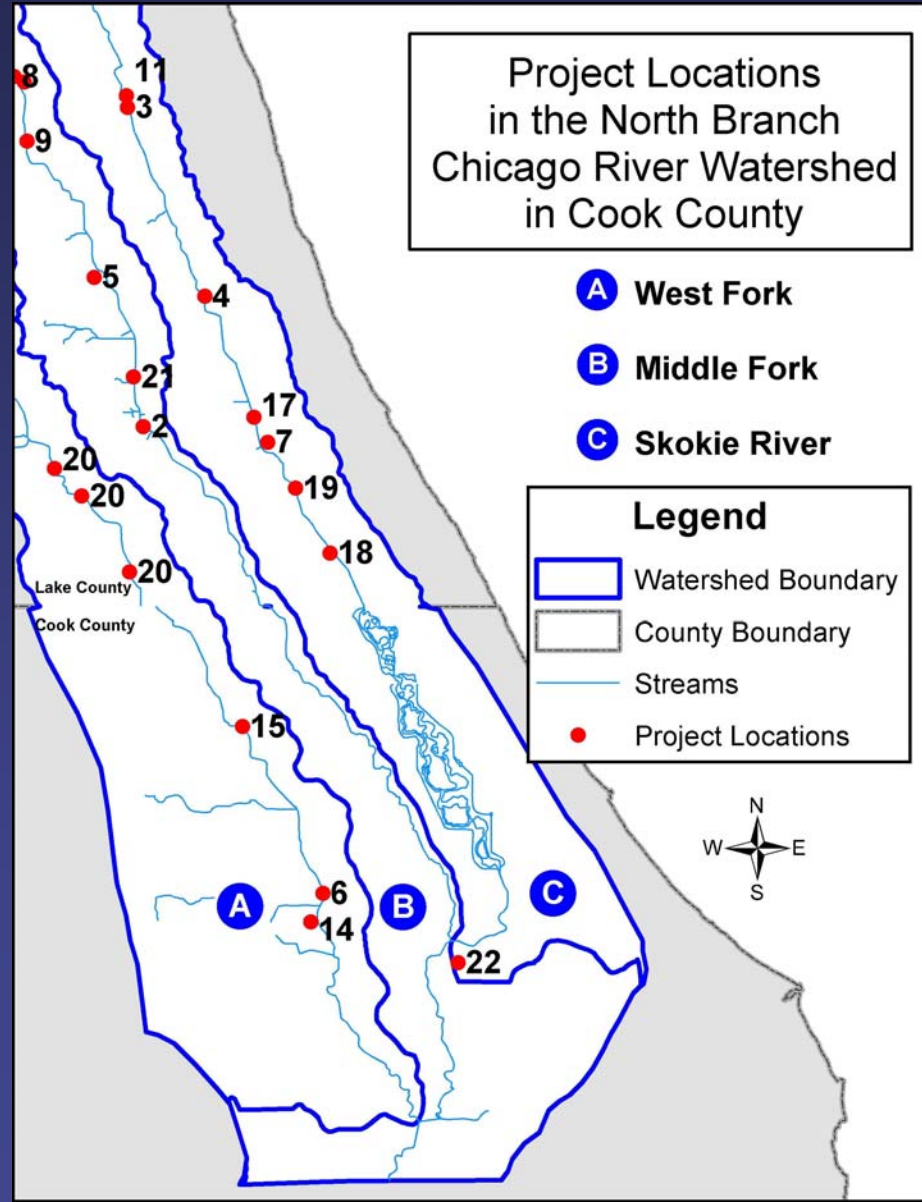
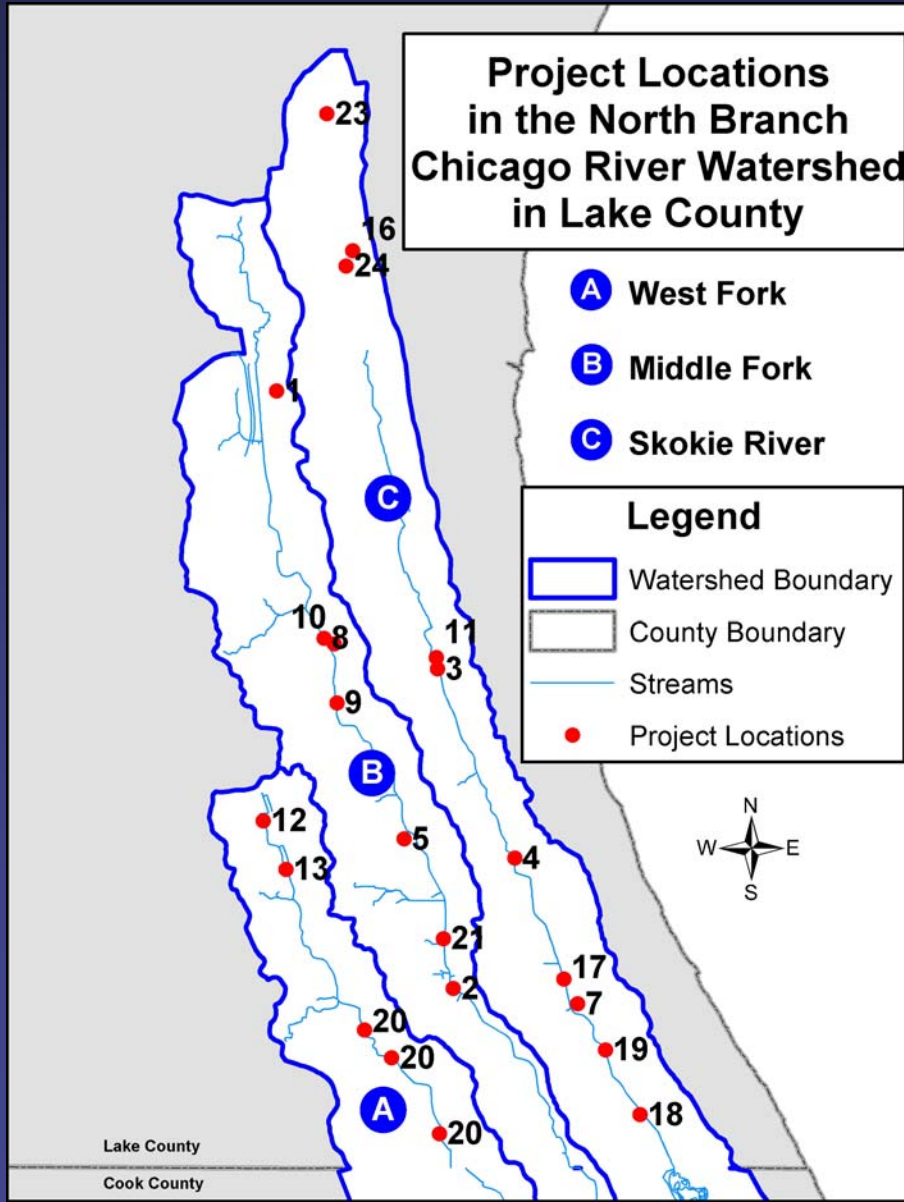
(2000 –WBP upgrade 2008)

<http://lakecountyil.gov/Stormwater/LakeCountyWatersheds/NBChicagoRiverWatershed.htm>

- Plan developed by SMC & Friends of Chicago River
- Stakeholder partners provide project cost-share
- Grant-funded SMC project coordinator
- Stakeholder group is active - meet 4x/year
- Plan Implementation: (\$6 mil+ for 50+ projects)
 - Stream, floodplain & wetland restoration
 - Rain gardens
 - Bio-swales
 - Permeable paving
 - Green roof
 - Educational activities
 - Detention basin retrofits
 - Cistern
 - Etc.



Watershed Plan Implementation Spans 2 Counties & 24 Municipalities: \$6+ Million in Projects

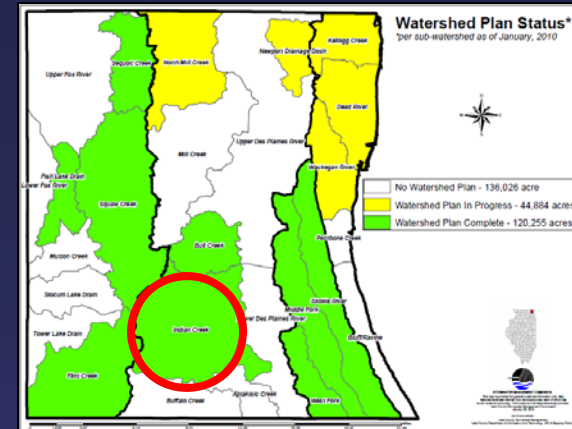


Indian Creek

(2004 – WBP upgrade 2008)

<http://www.indiancreekwpp.org/>

- Plan developed by SMC &
- Indian Creek Watershed Project (nonprofit 501c3)
- Stakeholder partners providing project cost-share
- SMC grant-funded project coordinator
- Nonprofit watershed project formed in 2001 - Volunteer coordinator
- Stakeholders active - meet 2x/year
- Plan Implementation: (\$4+ mil /40+ projects)
 - Stream & lake shoreline buffers
 - Stream & wetland restoration
 - Rain gardens
 - Bio-swales
 - Educational activities
 - Native plant sale
 - Detention basin retrofits
 - Lake monitoring



Board of Directors

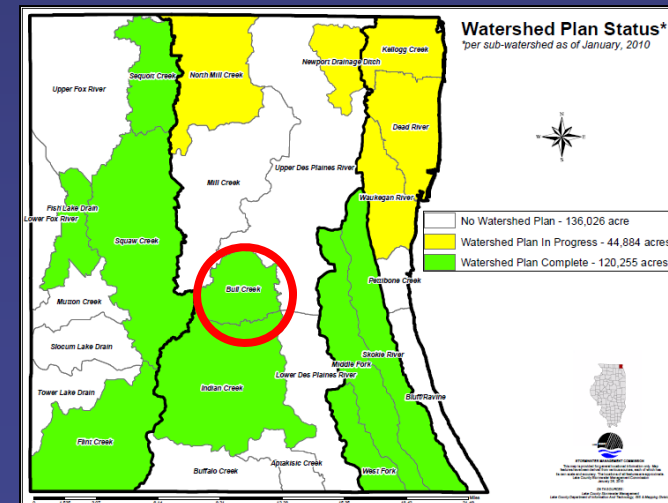


Indian Creek Watershed Project Board members from left to right... Bill Grinnell, Tori Trauscht, Donna Smith, Ron Aidikonis, Garth Huskey, Roberta Bagot, Greg Denny and Jeri Swanson. (Other members not pictured here, Rosemary Aitken and Jamie Godshalk)

Bull Creek-Bull's Brook (WBP 2008)

<http://lakecountyil.gov/Stormwater/LakeCountyWatersheds/DesPlainesRiverWatershed.htm>

- Plan developed by SMC
- Stakeholder partners providing project cost-share; business provided \$ for watershed council
- Grant-funded SMC project coordinator
- Watershed Council being formed w/watershed coordinator (SMC grant funded)
- Stakeholders active meet 4x/yr
- Plan Implementation:
 - Stream restoration projects (3)
 - Shoreline buffer demonstration
 - Educational activities
 - Lake County green building & site BMPs



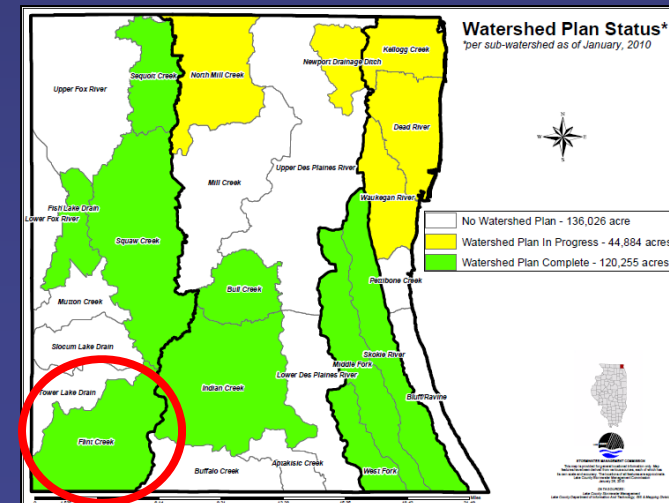
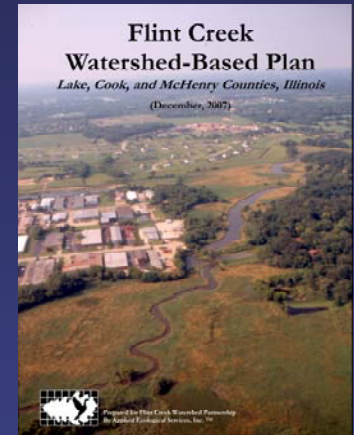
<http://lakecountyil.gov/Stormwater/LakeCountyWatersheds/LakeMichiganWatershed.htm>

- [illegible]

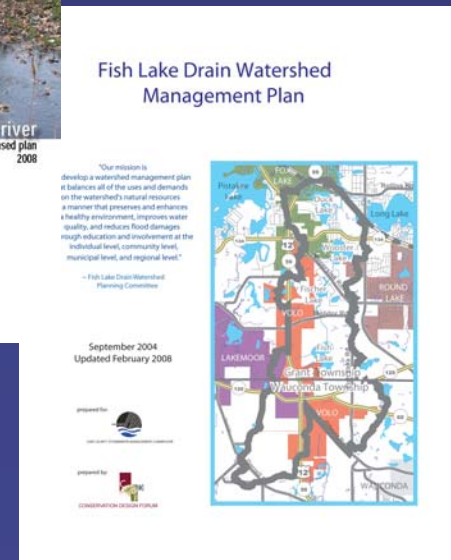
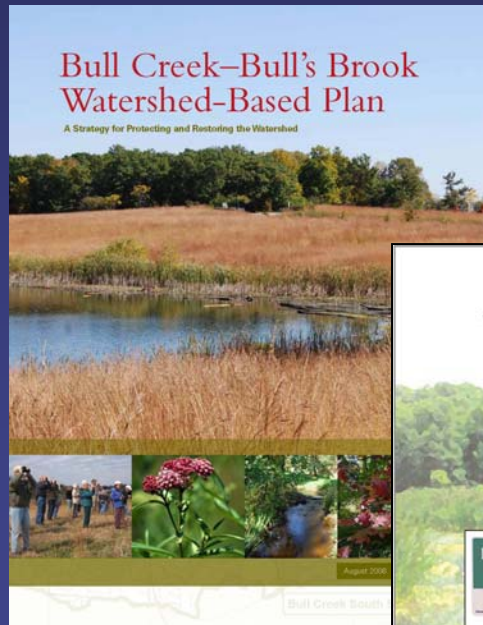
(2004 – WBP upgrade 2008)

-
- Watershed Plan Status***
**per sub-watershed as of January, 2010*
- No Watershed Plan - 136,026 acre
 - Watershed Plan In Progress - 44,884 acres
 - Watershed Plan Complete - 120,255 acres
- Legend:
- No Watershed Plan - 136,026 acre
 - Watershed Plan In Progress - 44,884 acres
 - Watershed Plan Complete - 120,255 acres
- Scale: 0 to 20 miles
- North Arrow
- Sub-Watersheds shown on map:
- Upper Fox River
 - Saginaw Creek
 - North Mill Creek
 - Hesperity Drainage Basin
 - Kaskaskia Creek
 - Dead River
 - Upper Des Plaines River
 - Mill Creek
 - Waukegan River
 - Squaw Creek
 - Wolf Lake Drain of Fox River
 - Norton Creek
 - Bull Creek
 - Sandstone Creek
 - Sycamore Lake Drain
 - Tower Lake Drain
 - Pott Creek
 - Indian Creek
 - Lower Des Plaines River
 - Snodgrass Fork
 - Rock River
 - Buffalo Creek
 - Aponecreek Creek
 - West Fork

<http://www.flintcreekwatershed.org/>



Lessons Learned: 10 Years and 10 Watershed Plans



Most Important Transition Needs

- Cost-share incentives for BMP projects & programs
- Watershed coordinator
 - Funding development
 - Constant/consistent communication (outreach, visibility & schmoozing)
 - Organize the development of a sustainable watershed council (or organization by another name)

Watershed Activities

By Boat, Bus or on Foot
Watershed Tours
& Workshops



Engaging Stakeholders To Participate in Plan Implementation

- Find a local champion
- Go to them if they don't come to you
- Communicate → a lot
- Visibility is important
- Demonstration projects → early in the process
- Remain open to new members
- Provide opportunities for learning & networking
- Meet regularly
- Meet when most can make it



Governance: partner roles & responsibilities...decisions, decisions...

One size does not fit all...examples:
watershed council, technical committee,
other organization

- who will lead \Rightarrow government agency, existing non-profit, establish non-profit
- how will group decisions be made \Rightarrow by group, by Board, consensus or vote
- who will manage projects and project money \Rightarrow collective group or individually
- how watershed groups evolve over time \Rightarrow plan implementation...

Turning the Plan into a Budget

- The plan identifies goals, objectives and action steps (programs & projects) for the near term and future years
- Establish priority tasks \Rightarrow each task requires resources
- Develop budget \Rightarrow work plan
- The budget is the roadmap for obtaining funds that will be acquired

Prioritize BMPs for Budget

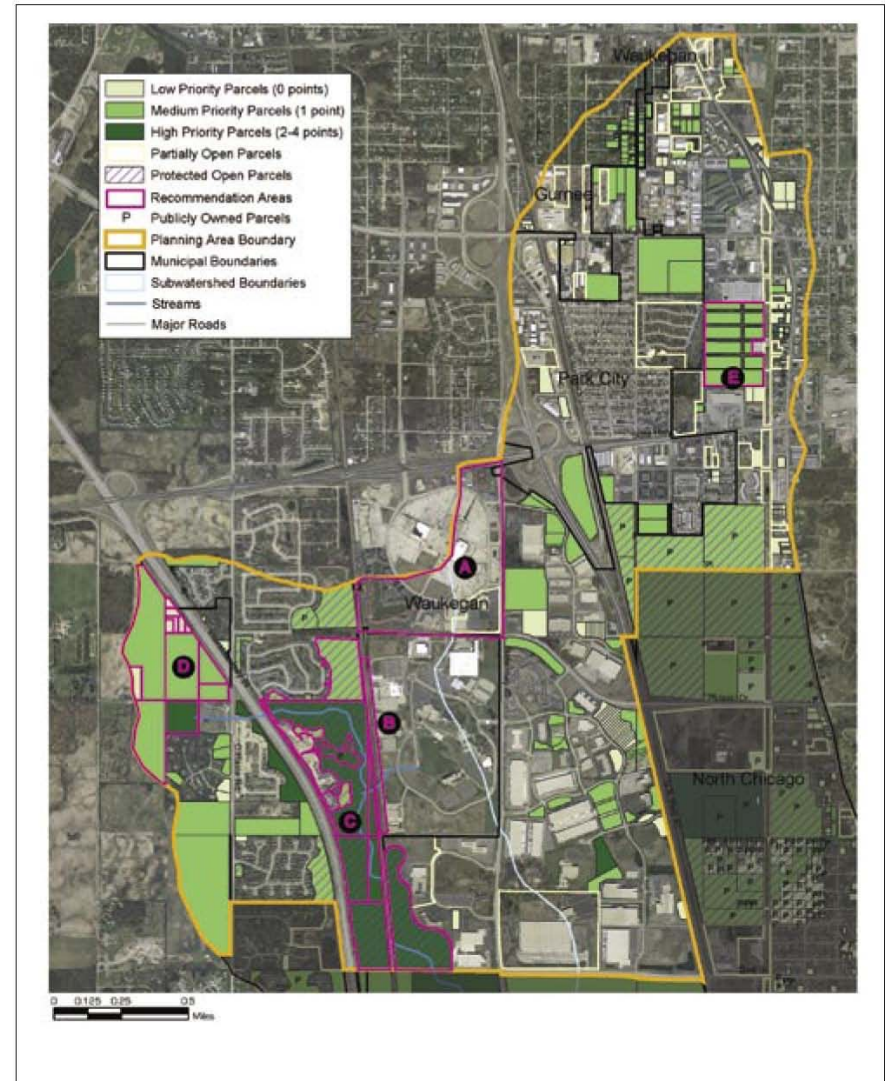
BMPs projects are identified in the plan

Prioritize projects – look at schedule

- Short-term
- Medium-term
- Long-term

Annual organization work plan

Goal 3: Improve Water Quality



Outcome – move from planning to...

In-the-Ground Projects



Wetland Restoration



Stream Restoration



Detention Retrofit



Bio-infiltration

SIGNS OF SUCCESS

MOVING FROM PLANNING TO PLAN IMPLEMENTATION

Measure progress

Communicate results
⇒ broadly

Maintain visibility

And....



Don't forget... Celebrate Success



Contact Information

- Web site: www.lakecountyil.gov/stormwater
- Patty Werner 847-918-5269
- Email: pwerner@lakecountyil.gov

