

Alternative Approach to Native Maintenance Program Management

Matt Moffitt, P.E., CFM

Brandie Bray

IAFSM - 2023



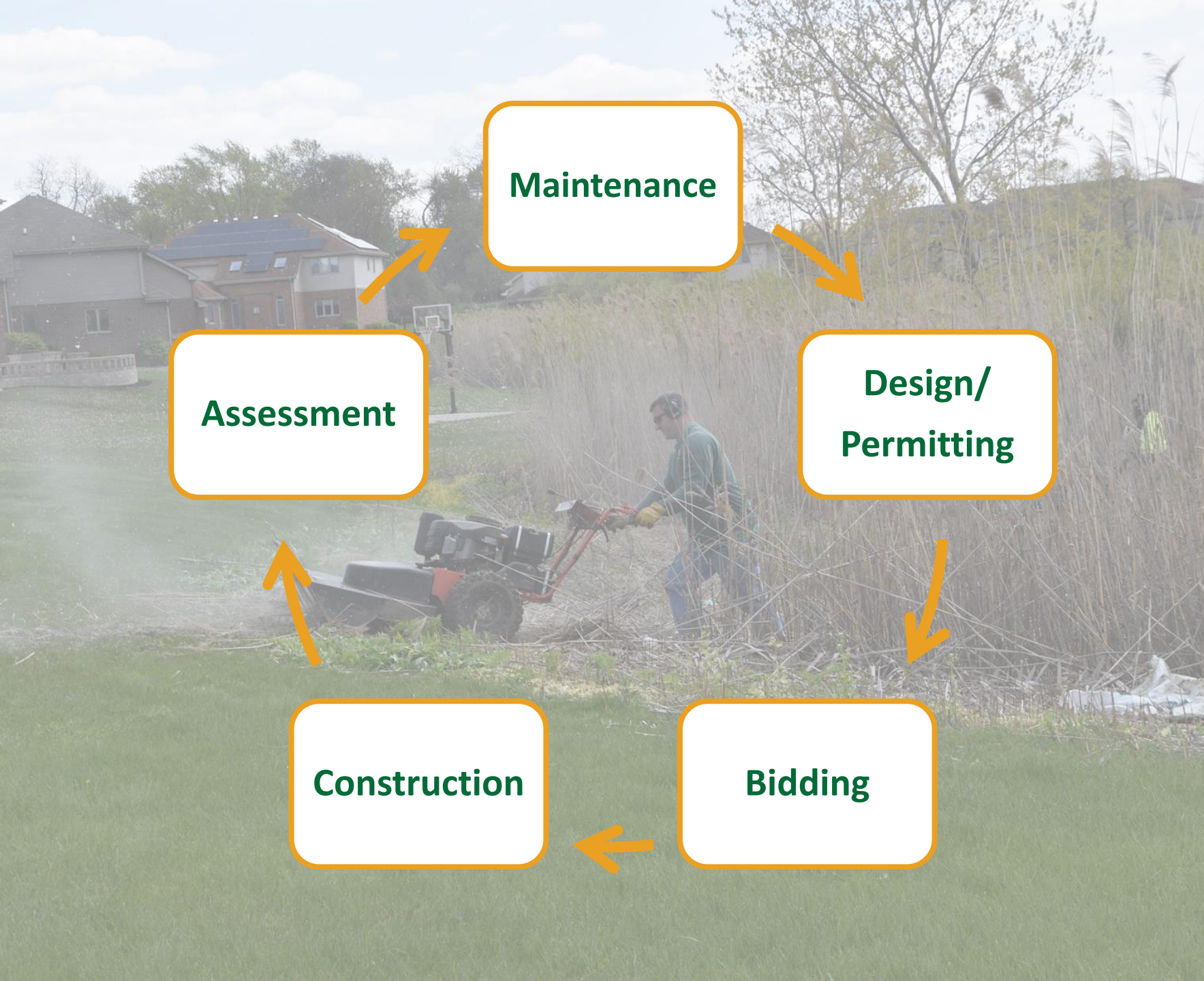
**What Projects do you have
that could be Programs?**



Consider your Native Areas

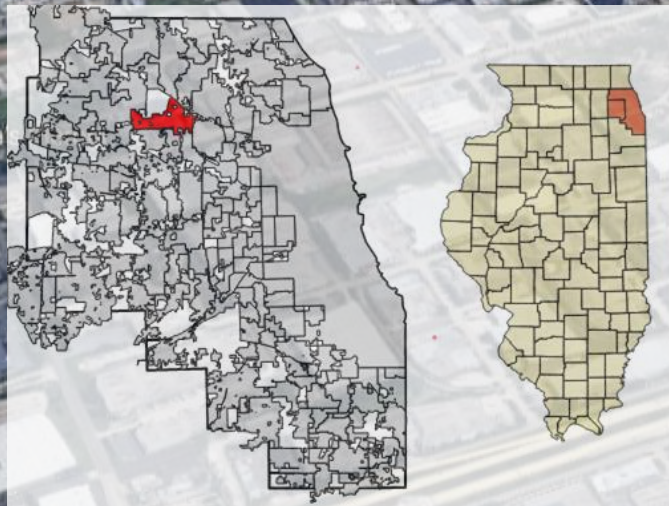


- Ponds
- Ditches
- Creeks
- Rivers
- Green Infrastructure



Does your municipality handle all these activities in the same department?

The Village of Elk Grove Village

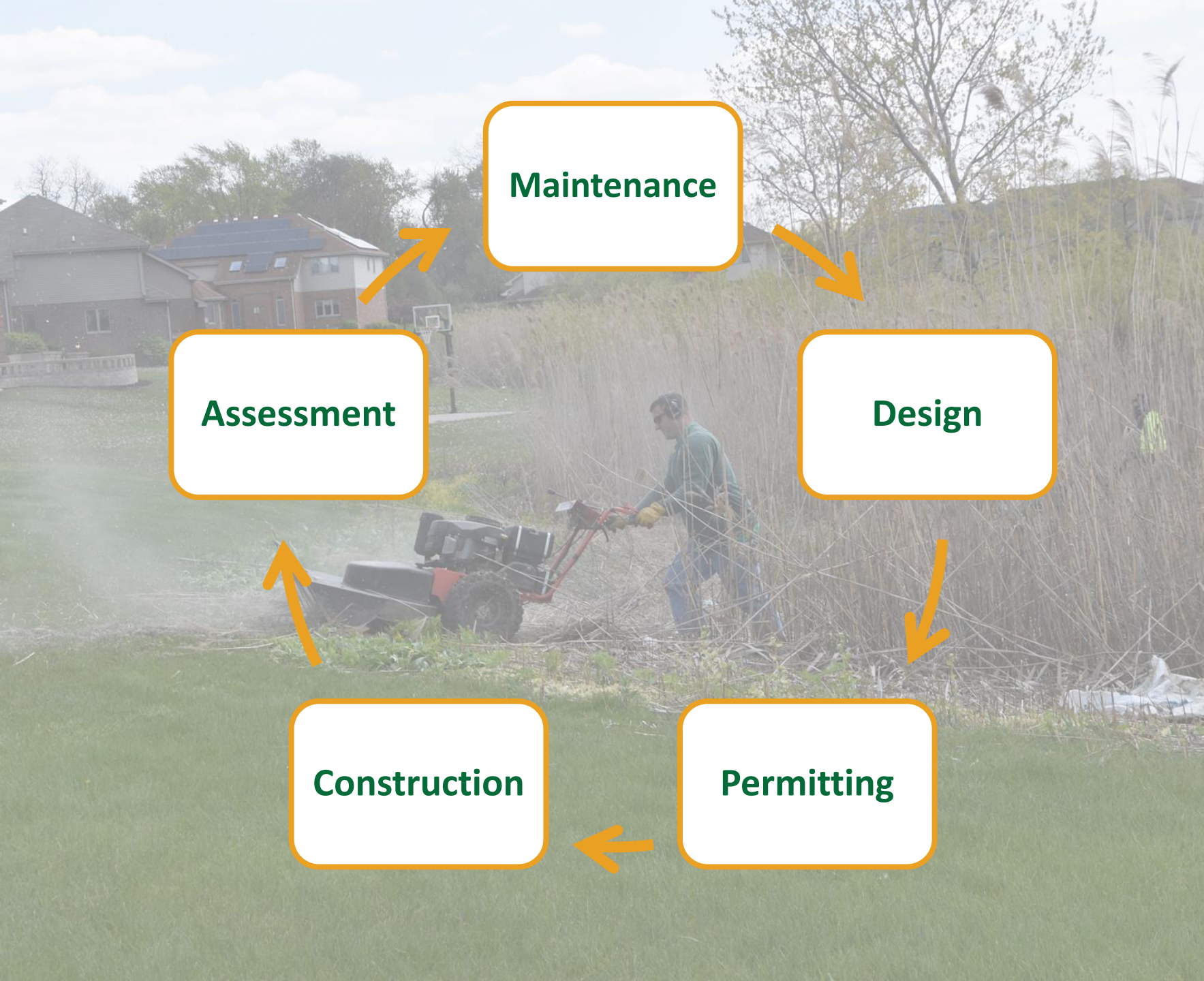


Area: 11.67 sq mi
Population: 32,800
5.9 sq mi business park
3,600+ Businesses
25 miles open-channels

Baxter & Woodman Natural Resources

Founded in late 2019





Maintenance

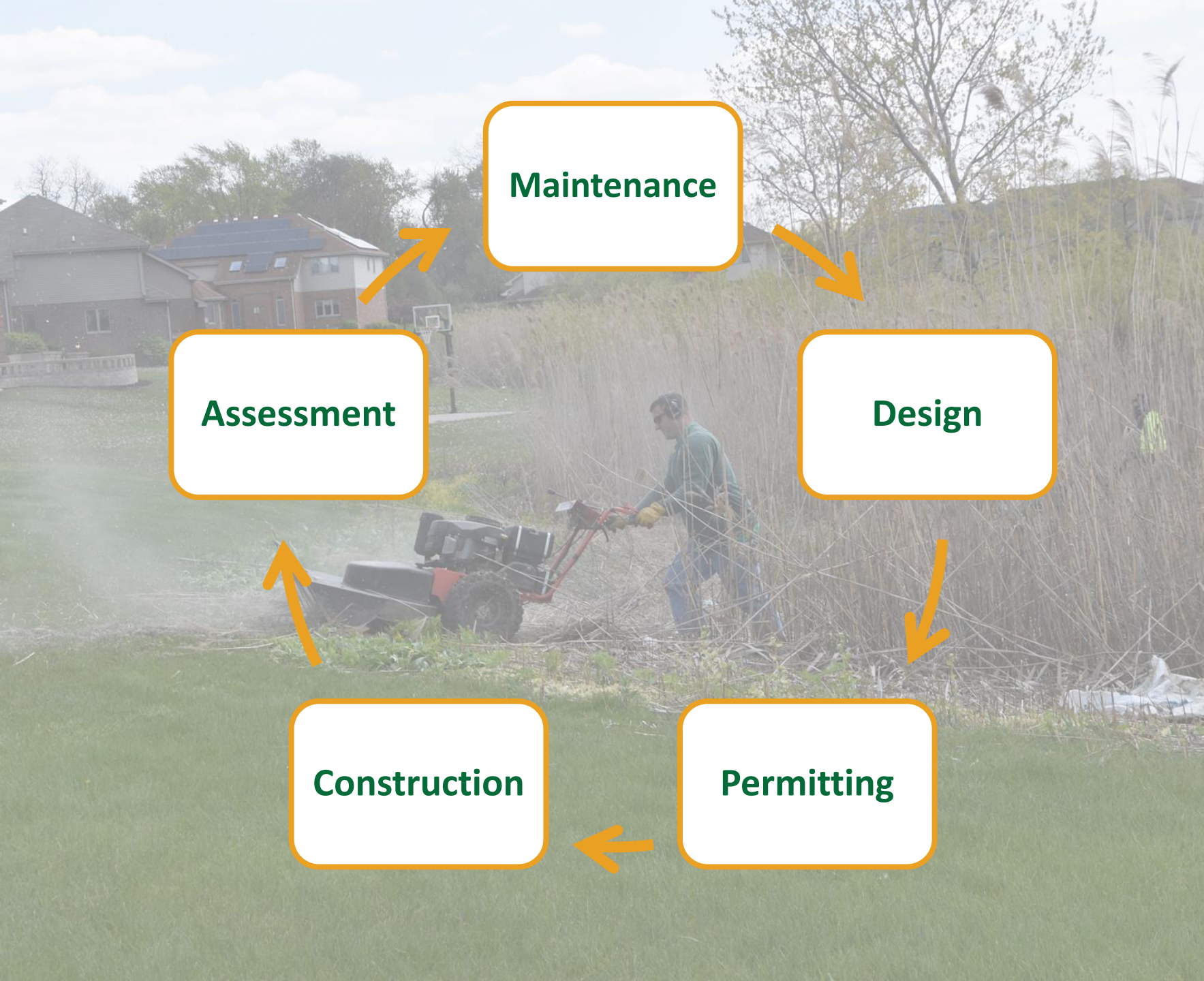
Assessment

Design

Construction

Permitting

From Multiple
contracts and
vendors
To one annual
contract with
one vendor



Maintenance

Assessment

Design

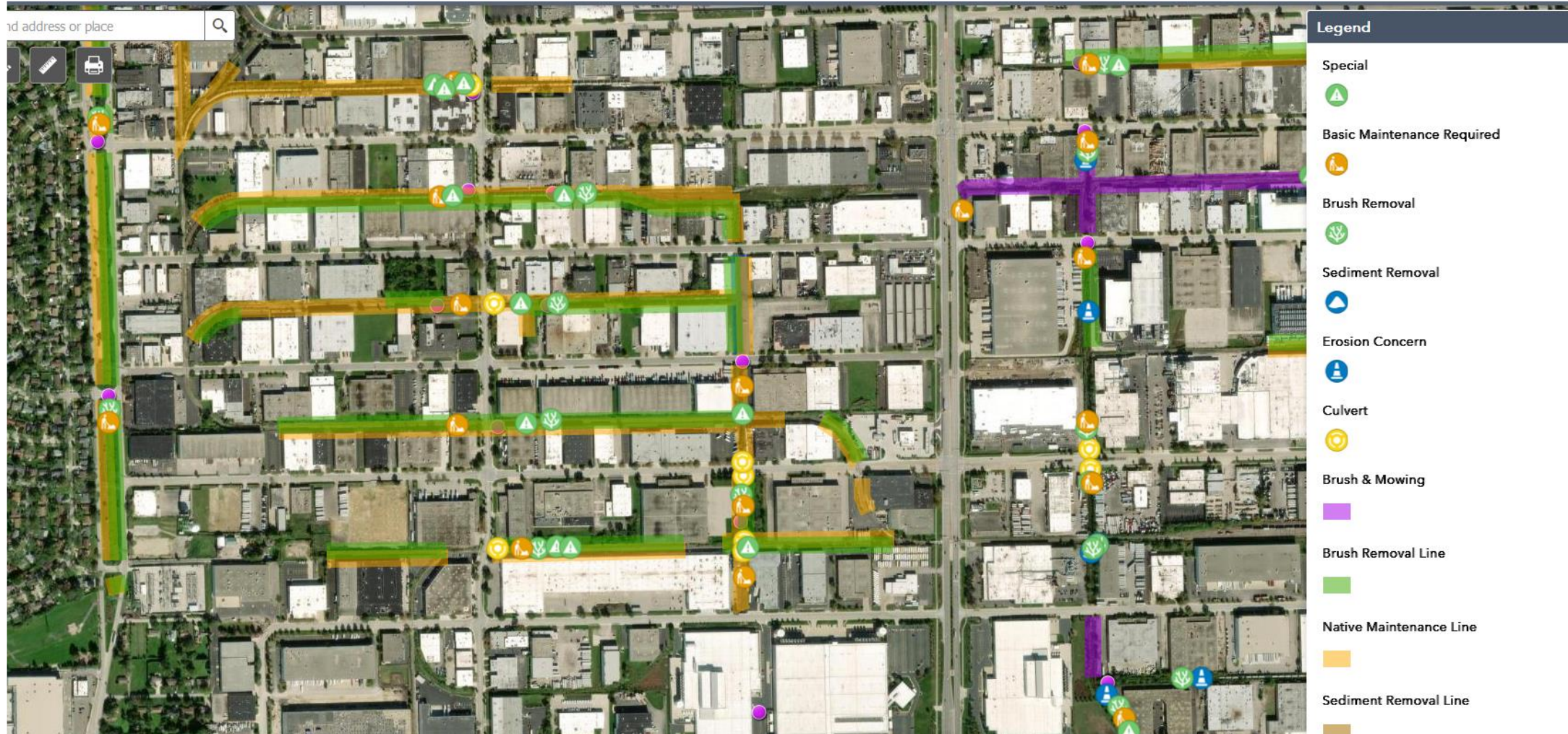
Construction

Permitting

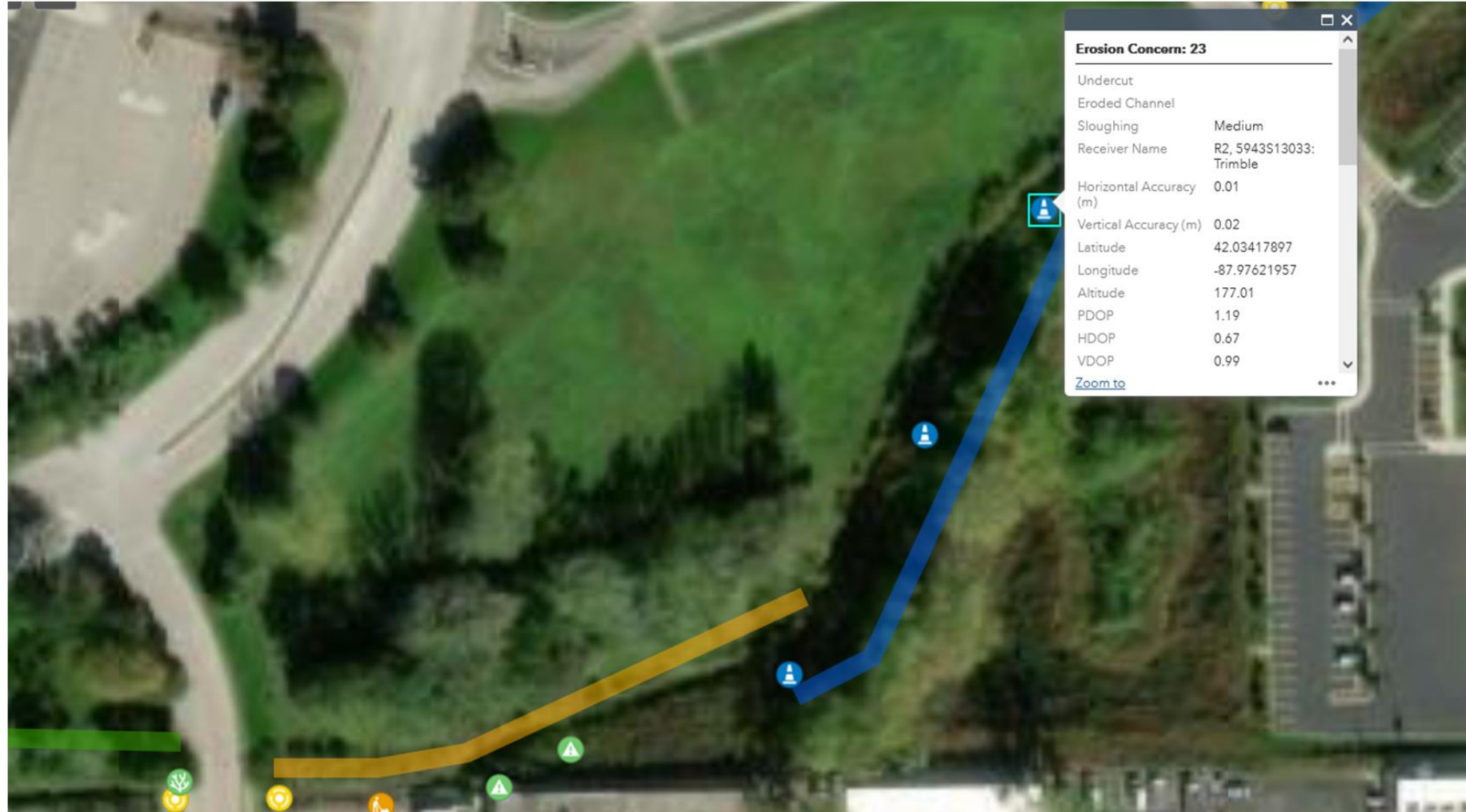
“Our business park
ditches went from a
hassle that often got
overlooked to one of
our easiest and best
programs in the
Village”

– Asst. Director of
Public Works

GIS Asset Manager



GIS Asset Manager



- Basic Maintenance Required
- Brush Removal
- Sediment Removal
- Erosion Concern
- Culvert
- Brush & Mowing
- Brush Removal Line
- Native Maintenance Line
- Sediment Removal Line

MAINTENANCE UPDATE MEMORANDUM

DATE: July 5, 2022

TO: Bill Bolich, Superintendent of Public Works - Elk Grove Village

FROM: Brandie Bray, Baxter & Woodman, Inc., Restoration Ecologist

PROJECT NUMBER: 210178.50

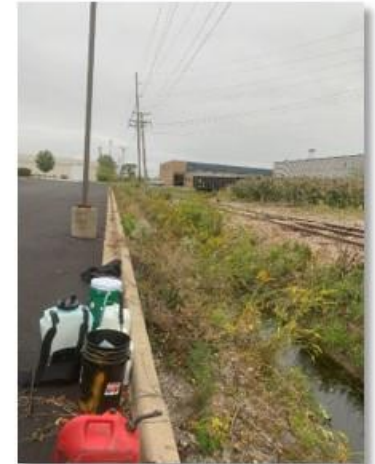
SUBJECT: Swale Maintenance Updates – Swale C9, C25

The purpose of this memorandum is to present the required project documentation as requested by the Village of Elk Grove.

Project Overview

The primary objective of this project is to manage vegetation within drainage swales throughout the village to relieve chronic flooding issues as well as address any erosion and sediment build up.

Location Map - Current



Summary

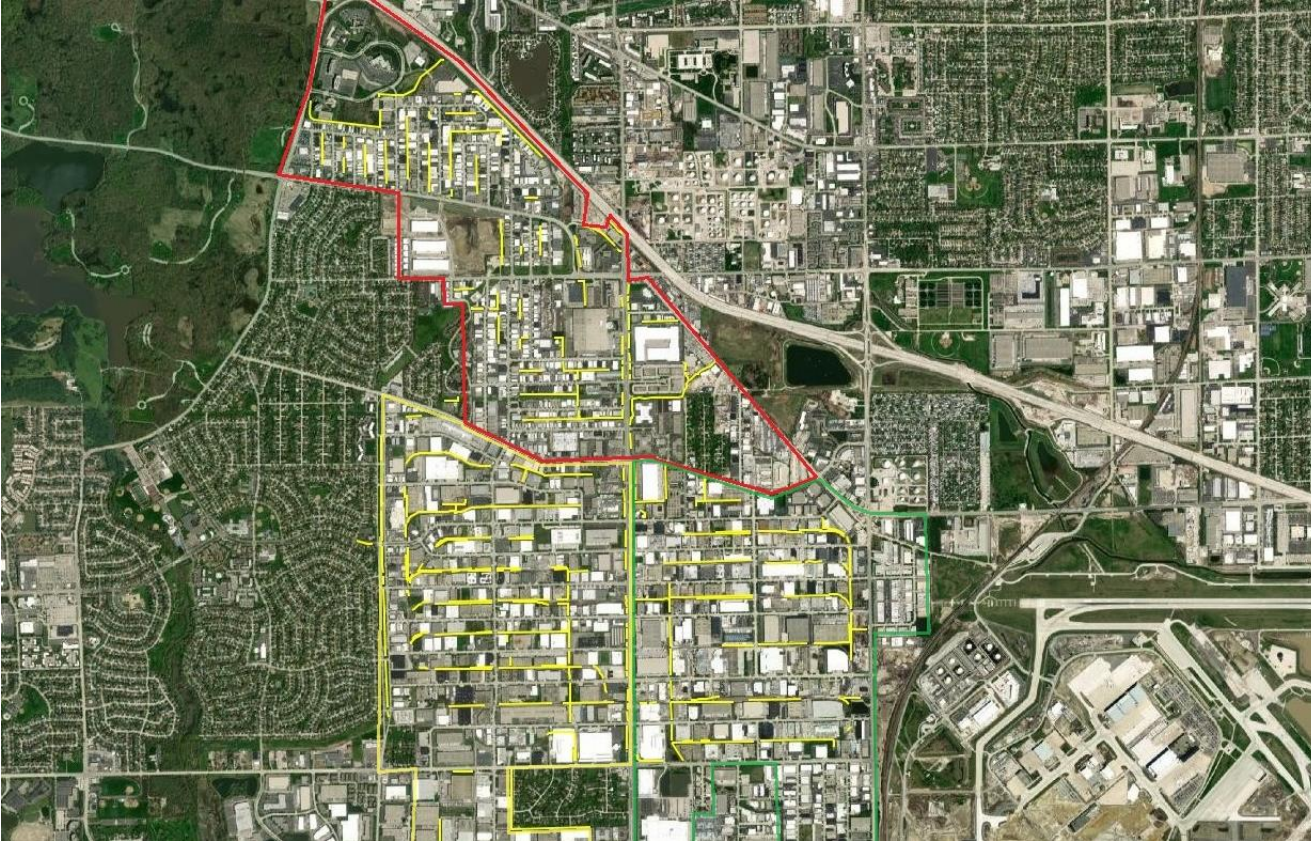
Progress continues to be made. The swale located between Estes Ave and Lunt Ave has been the primary focus the few past visits and is nearly all cleared. Construction work has begun at C25 and is currently underway. After finishing C9 (2598 Greenleaf Ave) crews will be moving to 199 Randall Street.

Flood Mitigation



Businesses losing millions
due to flooding after rain
events

Assessment



Assessment



Assessment



Annual Maintenance



- Mowing
- Brush Cutting
- Herbicide Application
- Minor Grading

Managing for Invasives



Goal: Remove vegetation hindering water conveyance while promoting a healthy ecosystem

Phragmites *Phragmites australis*



- Dense, forms monocultures
- Extremely difficult to control

Managing for Invasives



- Brush growth
 - Mostly Buckthorn and callery pear
 - Managing for none
 - Erosion

What we want to see

Sedges

Cattails

**Wet Prairie
Species**



Baxter & Woodman
Natural Resources

Restoration



Restoration



- Making repairs to mitigate sediment build up and erosion