



GreenLine Synergy

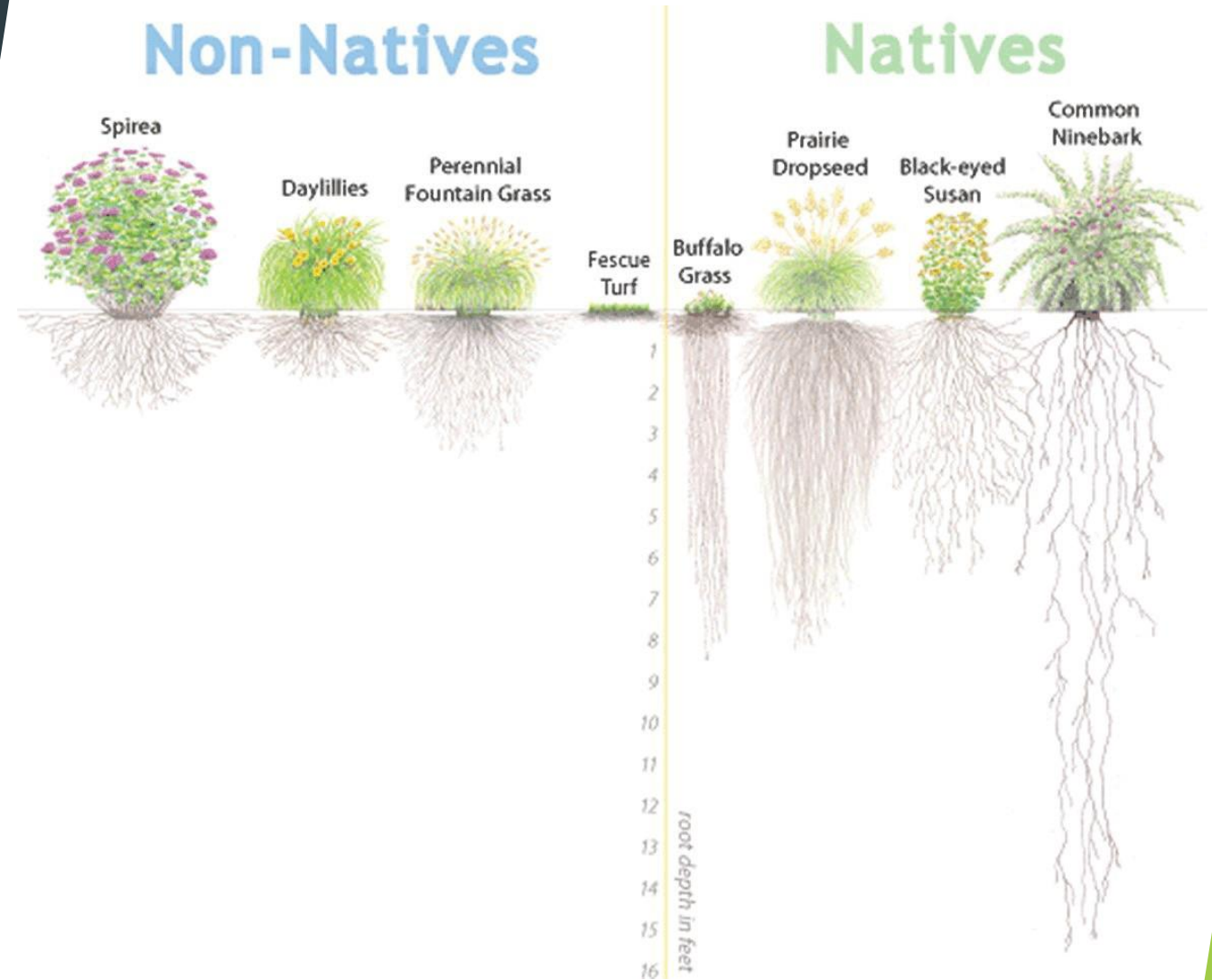
Pre-vegetated Blankets: Providing Erosion Control
While Preserving the Integrity, Stability & Beauty of
the Native Plant Community

Process Patent Protected Pre-Vegetated Blankets

Robert Livingston

What is Pre-vegetated Blanket?

- ▶ Let's begin with the importance of native plants:
 - ▶ Mother Nature's erosion control system
 - ▶ Thrive in soils, moisture and weather of their native region
 - ▶ Improve soil stabilization due to extensive root systems
 - ▶ Larger root mass compared to trees/shrubs/ornamentals
- ▶ In its simplest form, should consist of:
 - ▶ Traditional erosion control blanket
 - ▶ Live native vegetative coverage
 - ▶ Established basal system





How is it grown?

- ▶ High-level overview:
 - ▶ Erosion control blanket/mat
 - ▶ Mixture of growing media, enzymes and fertilizer
 - ▶ Native seed mix
 - ▶ Ensure native to site
 - ▶ Pure live seed (PLS)
 - ▶ Appropriate for site conditions
- ▶ Consistency:
 - ▶ Process
 - ▶ Temperature
 - ▶ Irrigation

Types - Which one is right for my project?

There are various types on the market:

- Pre-seeded
- Pre-grown
- Monoculture

Pay attention to:

- Coverage rate
- If indicated as “site specific”
- How they are delivered
 - Rolled versions can cause damage to roots and shoots and if not installed right away, can overheat

Benefits

Most crops ready
to ship in 4-6
weeks

Bio-diversity,
customizable
seed blends

Secure steep
slopes &
compromised
areas

Immediate
coverage

Rapid
establishment &
easy
maintenance

Convenient
loading &
transport

Upfront
maintenance -
consistent
watering

Timed
installation





Are there limitations?

- ▶ Not the answer for every site
- ▶ Not recommended for use in areas:
 - ▶ Constantly under water
 - ▶ Severe slopes that are impossible to access

Where can it be used?

- ▶ Steep slope
- ▶ Drainage swale or channel
- ▶ DOT roadside
- ▶ Retention basin
- ▶ Rain garden
- ▶ Green-roof
- ▶ Shoreline
- ▶ Streambank
- ▶ Wetland
- ▶ Woodland
- ▶ Prairies
- ▶ Many more!



Residential Example -Silver Lake, WI



Shoreline restoration and landscape design centered on erosion control



Site vegetation was sparse and unkempt



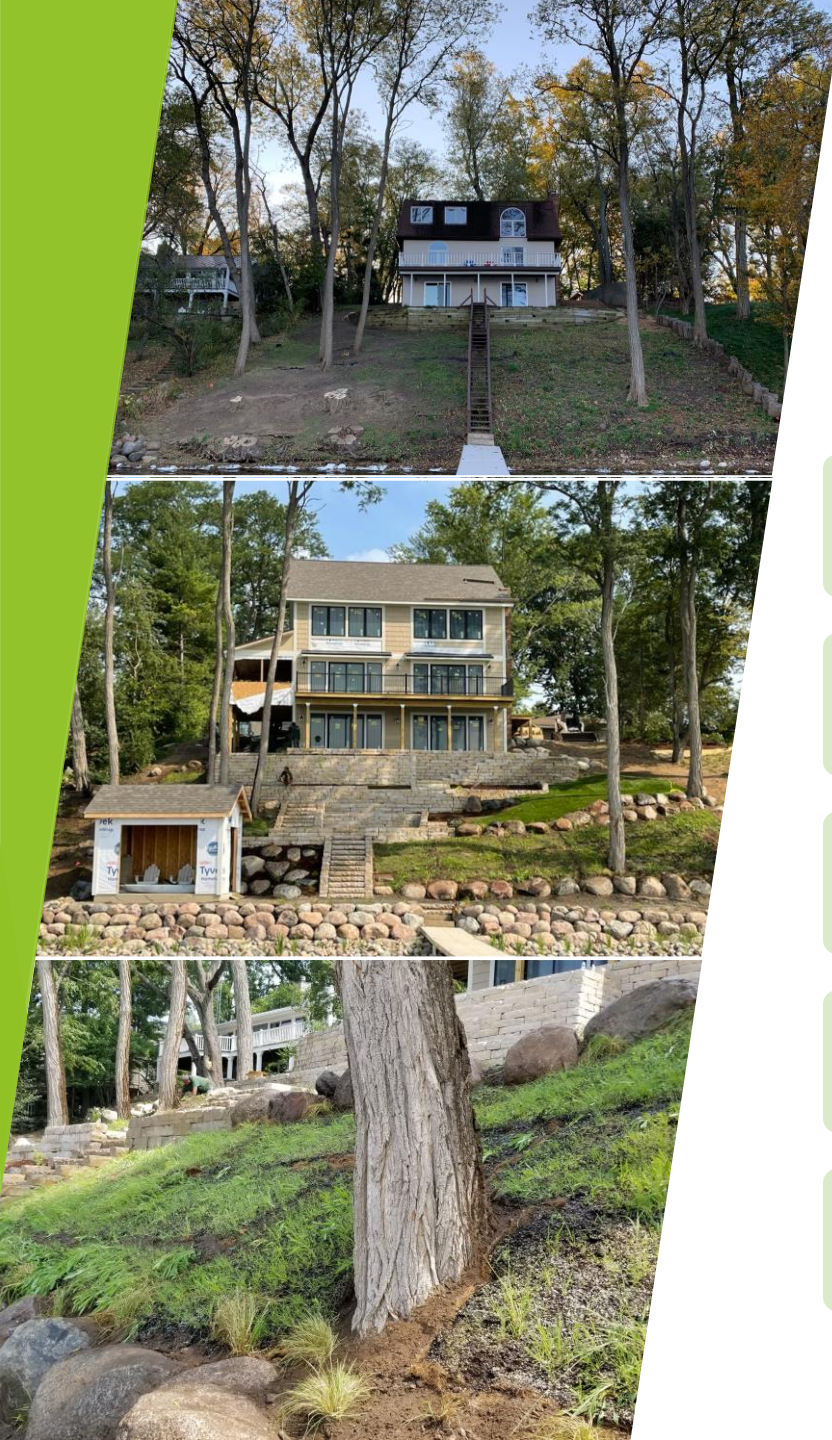
Seed mix was a low growing prairie for clay soils



780 SF



Just installed 2021



Steep Slope Example - Twin Lakes, WI

- ▶ Private residence situated on a steep slope on Lake Elizabeth - contracted for shoreline restoration and landscaping design and install
- ▶ Seed mixes were a low growing meadow for dry soils and a woodland edge/savanna mix
- ▶ 2,202 SF
- ▶ Natives selected for site conditions/geographic location



Steep Slope Example - Twin Lakes, WI

- ▶ Installed in 2020, fully robust first year
- ▶ Not only beautiful, but secures the slope
- ▶ Adding pre-vegetated blanket/native plants preserve the integrity of region-specific native species



DOT Example - Madison, WI Metro Area



Contracted to grow 3 separate types of blanket engineered for retention basins



Site conditions - salt residue, pollution, winter exposure, added aesthetic features



Concentrated or peak flow areas



Training and education for installation





DOT Example - Madison, WI Metro Area

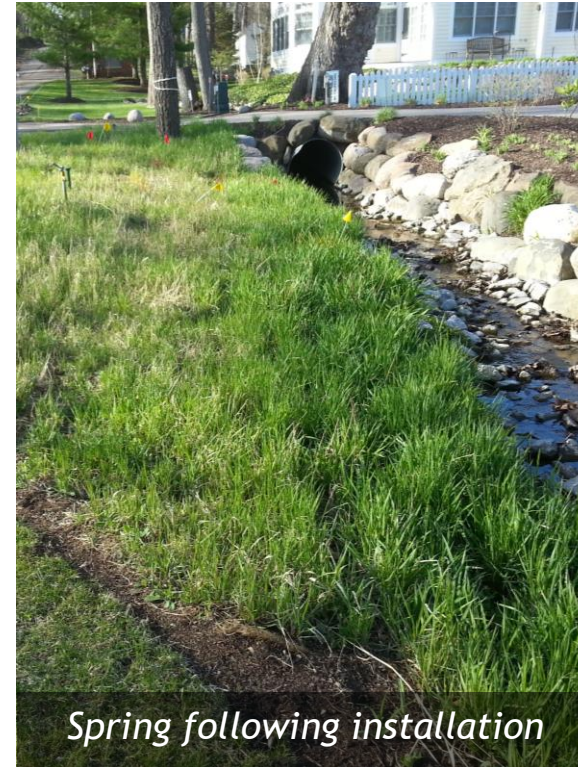
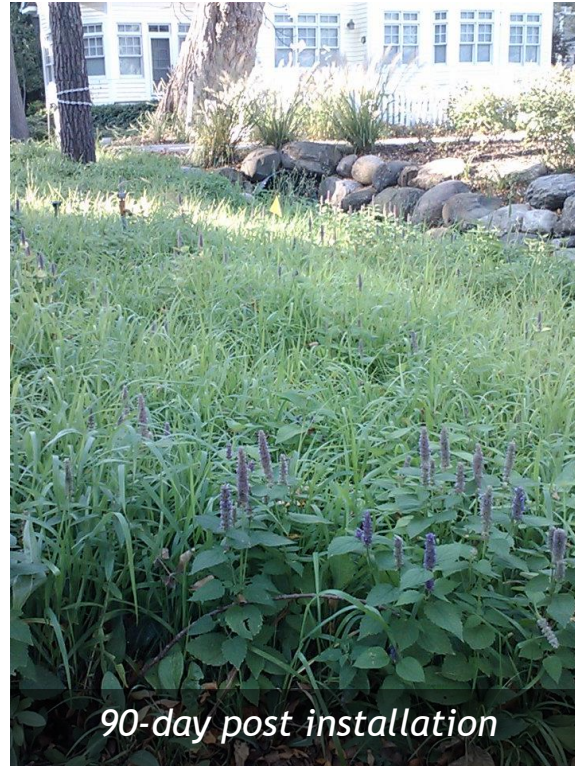
- ▶ 10,863 SF
- ▶ They let blanket sit in the sun and it didn't look good after rain events
- ▶ Reassured them it would bounce back - that's a plus about an established basal system
- ▶ Installation was done in 2017 - visited site in 2021 and it is healthy and flourishing

Municipality Example - Antioch, IL



- ▶ Sports Complex/Park
- ▶ Goal of easy maintenance, sustainable, wildlife friendly and aesthetically inviting spaces
- ▶ 3 seed types for specific areas
 - ▶ High diversity prairie
 - ▶ Mesic prairie
 - ▶ Diversity meadow
- ▶ 14,570 SF
- ▶ Installed in 2021 - excited to see what it looks like this year

Municipality Example - Fontana, WI



Municipality Example - Fontana, WI



Maintenance



PROPER WATERING



PRESCRIBED BURN YEAR
2 OR 3



MOWING NATIVE
VEGETATION TO SELECT
FOR GRASS SPECIES

Questions?

Process Patent Protected Pre-Vegetated Blankets

Robert “Bob” Livingston

grow@greenlinesynergy.net

p 262-877-3741

f 262-877-4074

www.greenlinesynergy.net