

# 2019 IAFSM Conference - Session 4B

## 2017 CRS Coordinator's Manual

Insurance promotion  
Mapping  
Outreach projects



National Flood Insurance Program  
Community Rating System

## Coordinator's Manual



FEMA

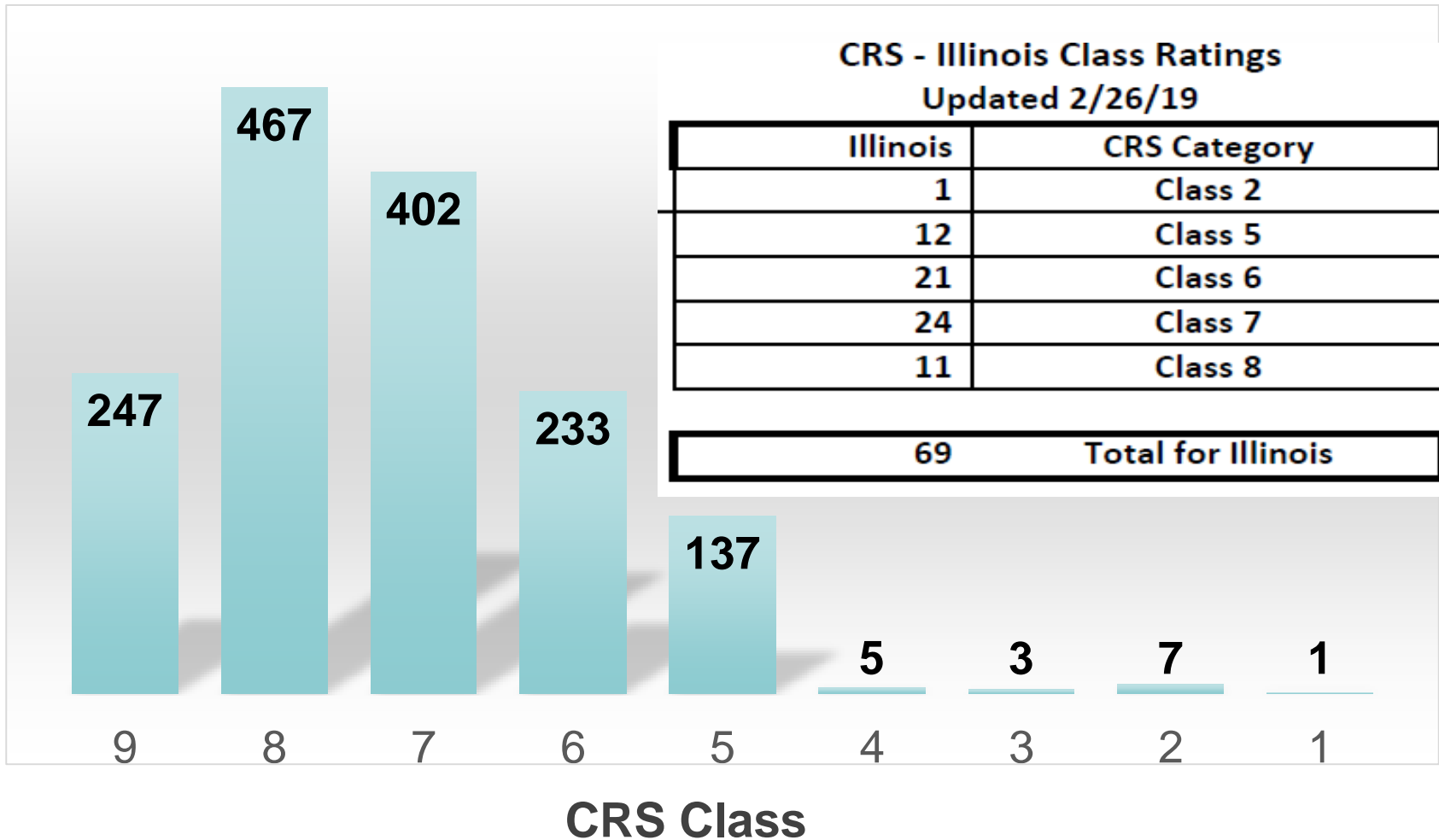
# Program Basics

- Voluntary program for Communities participating in the National Flood Insurance Program (NFIP);
- CRS offers flood insurance policy premium discounts in communities that perform floodplain management activities that exceed the NFIP requirements;
- Discount rates are awarded to communities based on the following credits:

**Table 2. CRS Premium Discounts by Class and Flood Zone**

Class	Discount	Class	Discount
1	45%	6	20%
2	40%	7	15%
3	35%	8	10%
4	30%	9	5%
5	25%	10	—

# Nationwide CRS Participation



CRS - Illinois Class Ratings  
Updated 2/26/19

Illinois	CRS Category
1	Class 2
12	Class 5
21	Class 6
24	Class 7
11	Class 8
<b>69</b>	<b>Total for Illinois</b>

# 2017 CRS Manual

## What you will see in the 2017 Manual

- Bars in the margins for changes
- No bars for corrections and typos
- Appendix D



### Higher Regulatory Standards

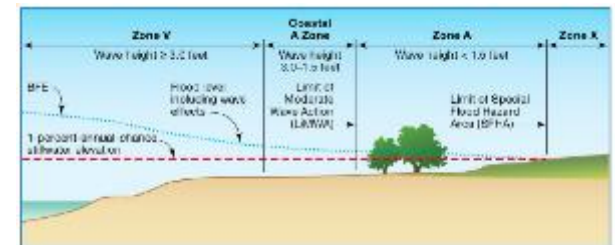
One method to offset the impacts of the use of fill is to require compensatory storage, but compensatory storage does not compensate for the adverse impact on other natural floodplain functions. Therefore, it is worth approximately half the credit. This credit is for regulations that require new developments to provide compensatory storage at hydrologically equivalent sites up to a ratio of 1.5 to 1.

- (2) Prohibition of buildings (DL2) (maximum credit: 1,000 points). If the regulations prohibit only certain types of buildings, such as residences, the points can be prorated.
  - (a) Prohibition of all buildings (DL2a): Full credit for DL2 is for prohibiting all buildings and LOMR-Fs.
  - (b) Prohibition of all buildings (DL2b): Partial credit is provided if the community allows LOMR-Fs.
- (3) Prohibition of outdoor storage of materials (DL3) (maximum credit: 50 points). Credit can be received under three sub-elements:

# 2017 CRS Manual

The Last Changes include:

- Special Flood-related Hazards incorporated into the Coordinator's Manual (no more Supplements)
- Section 502 Repetitive loss categories
- Activity 410 CTP credit retirement
- Activity 450 WMP
- Activity 540 changes in prerequisites
- Class 4 freeboard requirement
- Sea Level Rise Standard



# 300 Series

## **Activity 370**

(Flood Insurance Assessment)

- Specialist provides the Insurance Data
- Assessment is submitted to Community Board

(Flood Insurance Promotion) \*Change\*

- A Lender is no longer required on the committee
- Committee must still have an insurance agent

**2021 Manual – More focus on this activity**

# 400 Series

## **Activity 430**

Change \*Special Hazards credit criteria moved into Higher Regulatory Standards.

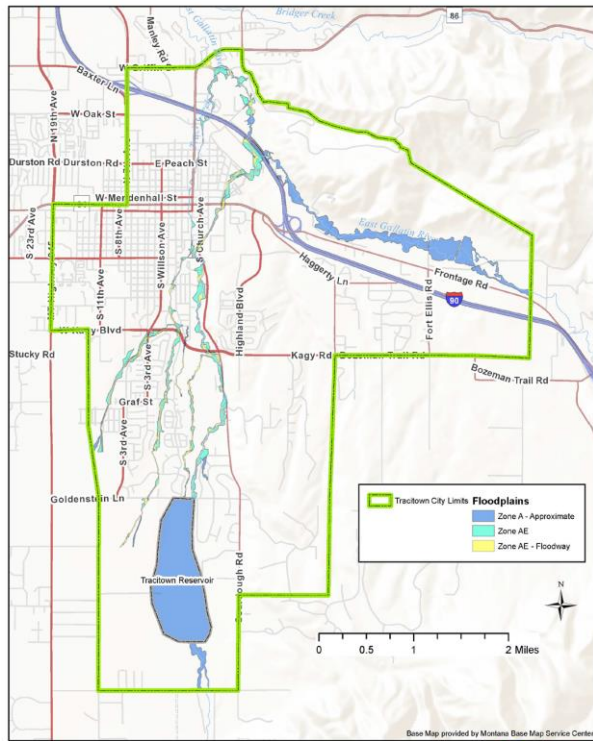
## **Activity 450**

SMR/WMP – SMR credit will no longer be needed for Watershed Masterplan credit.

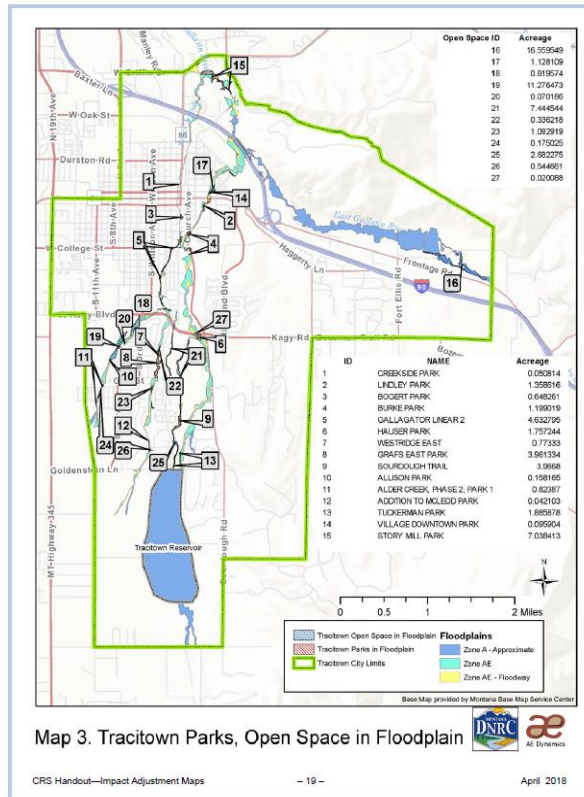
- New SMR/WMP Checklist will be available shortly
- Impact Adjustment Map and Acreage calculation example will also be available

# 400 Series – Maps

Good mapping makes for great 400 series credit



Map 1. Tracitown Base Map



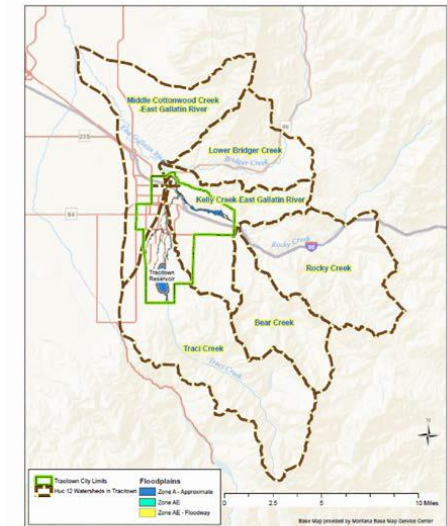
Map 3. Tracitown Parks, Open Space in Floodplain

CRS Handout—Impact Adjustment Maps

– 19 –

April 2018

Watershed	Area (square miles)		
	Inside Community	Outside Community	Total area
Lower Bridger Creek	0	21.2	21.2
Traci Creek	7.5	44.4	51.9
Bear Creek	0	20.3	20.3
Rocky Creek	0	34.3	34.3
Kelly Creek—East Gallatin	8.8	16.8	25.6
Middle Cottonwood Creek—East Gallatin	2.0	34.6	36.6



Map 4. Tracitown Watersheds





# 500 Series Changes

## Flood Damage Reduction Activities

Section 502 and 510

CRS Repetitive Loss Categories

CRS Rep. Loss Category	RL Properties 2013 Manual	RL Properties 2017 Manual
Category A	0	0
Category B	1-9	1-49
Category C	10 or More	50 or More

**CRS Floodplain Management Plan** – Planning Step 5(c) – full credit needed

- ✓ Examine all RL areas and insurance claims

**OR**

**Repetitive Loss Area Analyses (RLAAs)** for all RL Properties

# Activity 540 - Drainage System Maintenance

## Problem Site Maintenance (PSM) and Capital Improvement Plans (CIP)

- a) All are now stand alone
- b) Credit for CDR is no longer a prerequisite

# 2017 CRS Manual

ISO/CRS Specialists will be helping all communities:

- Verification Visits
- Users Groups
- Conferences



# CRS Training Opportunities

- Webinars (all times 1 pm Eastern)
- EMI Course
- **Field Deployed L278 Course in Illinois**  
October 7 – 10, 2019  
Downers Grove Public Works
- *Check the NFIP/CRS Update Newsletter and CRSresources website for more training opportunities*



# NFIP/CRS Newsletter



## NFIP/CRS UPDATE

Upcoming changes proposed for the next CRS Coordinators Manual which is due out in 2021 will be discussed in the this years editions of the newsletter. If you haven't already done so, register to receive the newsletter on the CRS Resources website

# CRS Webinar Series

## Questions?



**Contact:**  
**Lou Ann Patellaro**  
**Community Rating System**  
**ISO/CRS Specialist for Illinois**  
**(708) 634-3040 - Office**  
**(954) 651-5021 – Mobile**  
**Email: [lpatellaro@iso.com](mailto:lpatellaro@iso.com)**