



PrairieWalk Pond: Natural Area/Stormwater Retention Project

Village of Lisle

Presenters: Mary Lou Kalsted, P.E., CFM, Village of Lisle
Gary Cottingham, P.E., James J. Benes and Associates
Juli E. Crane, PWS, LEED AP, Planning Resources Inc.





The Problem: Downtown Needed Revitalization



- Deteriorating infrastructure (facades, streetscape, utilities, signage)
- Properties in floodplain/ stormwater issues
- Not pedestrian friendly/ vehicle safety issues
- Increase downtown visibility from Ogden/Route 53
- Strengthen economic base—restaurants, retail



Part of the Solution: Regional Stormwater Basin



- Purchase floodplain homes
- Build stormwater basin: retention and compensatory storage
- Gateway to downtown



PRE-EXISTING SITE CONDITIONS



FLOODPLAIN ON SITE

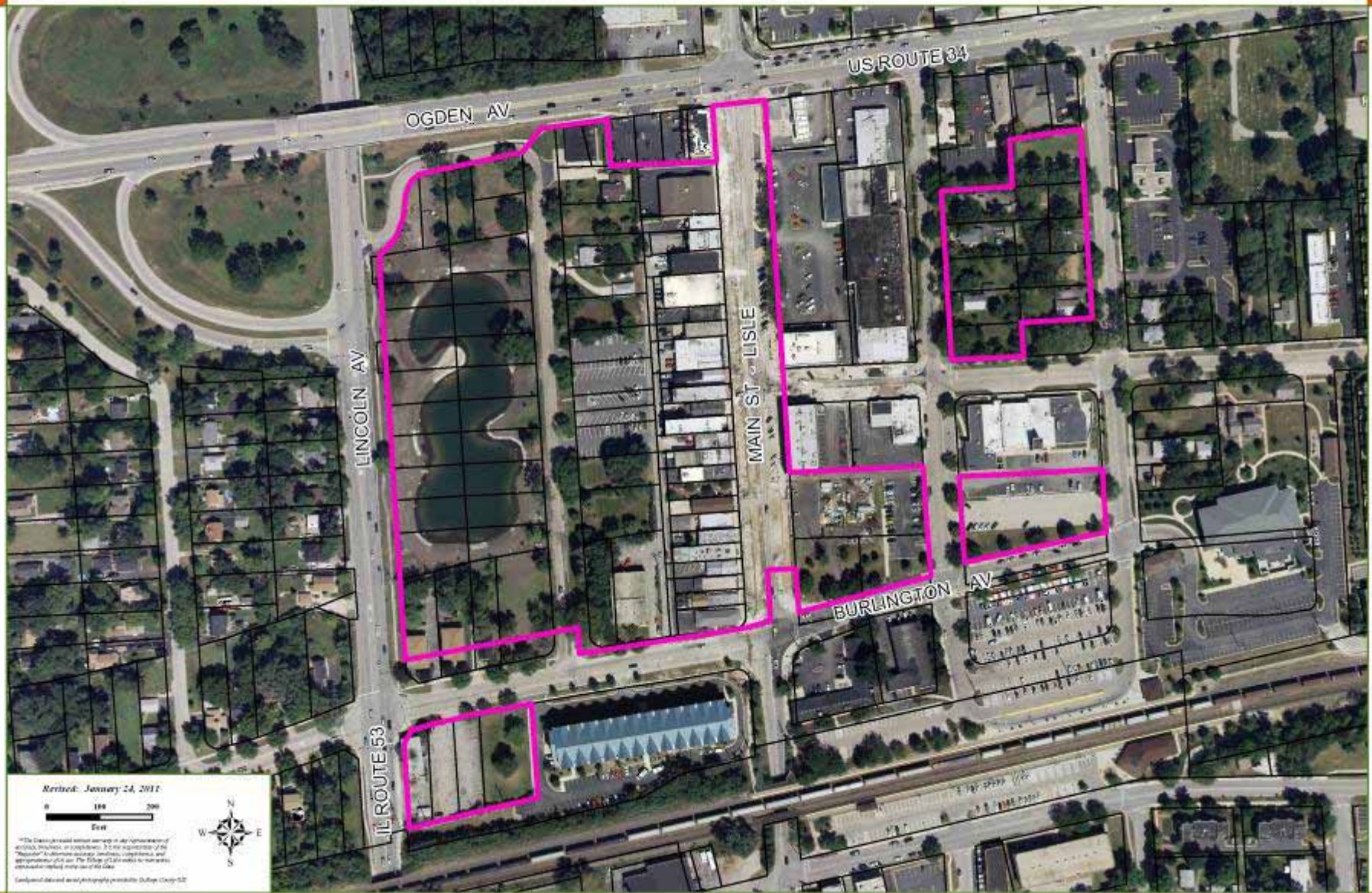


Purchase of Properties

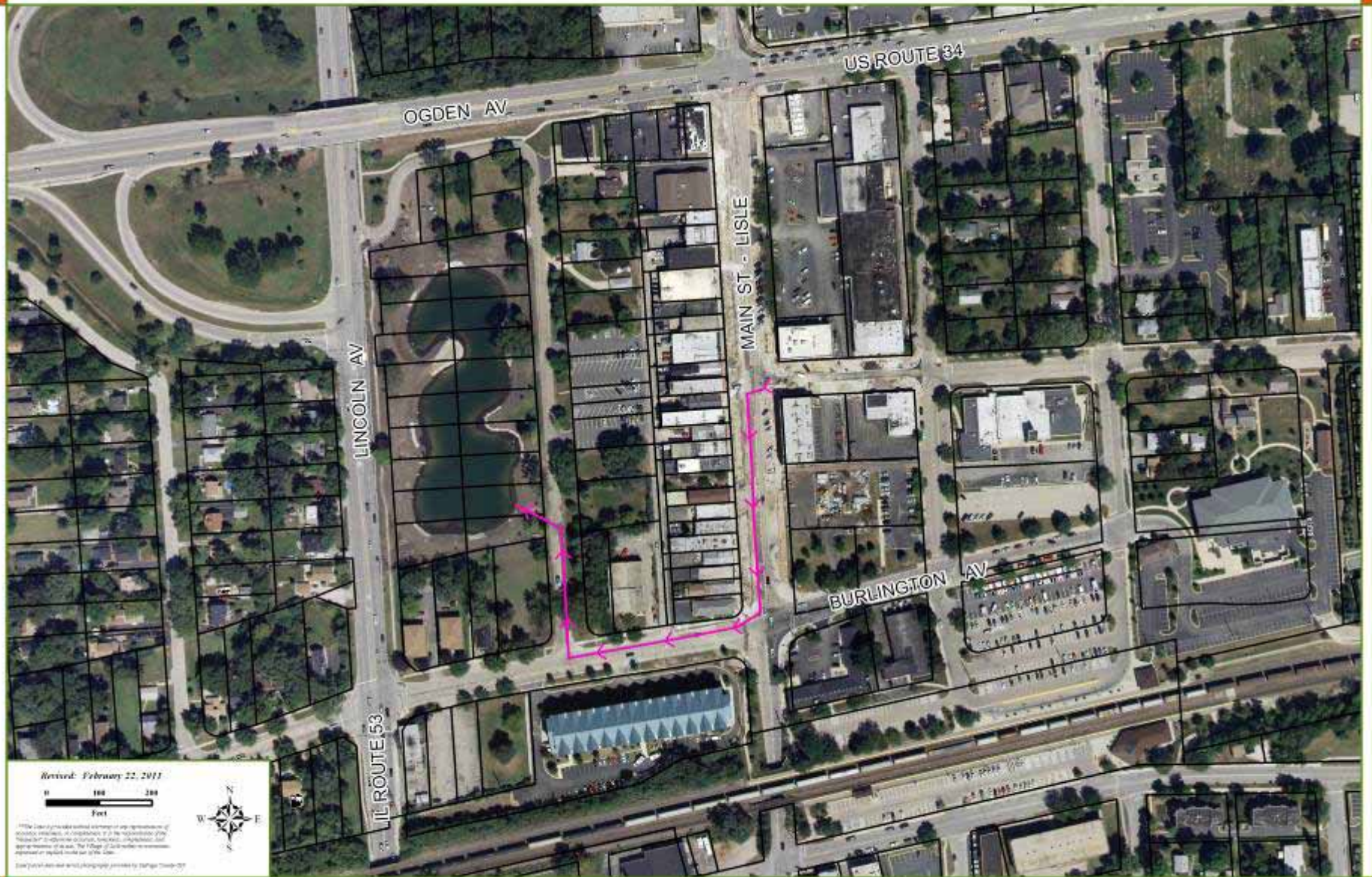


- 26 properties purchased
- Total cost \$3.6M
- 7 properties already owned
- 23 properties used to build basin and improvements

BASIN SERVICE AREA



OFF-SITE CONVEYANCE



Stormwater Basin Design



Detention and Compensatory Storage Volumes

- Detention Storage: 7.8 acre-feet
- Compensatory Storage: 9.4 acre-feet



Permits

- IDOT
- Army Corp of Engineers
- IEPA Water Quality Certification
- DuPage County Stormwater
- Village of Lisle Building Permit

Tree Protection



Erosion Control



Dewatering



Installation of Stone Outcroppings



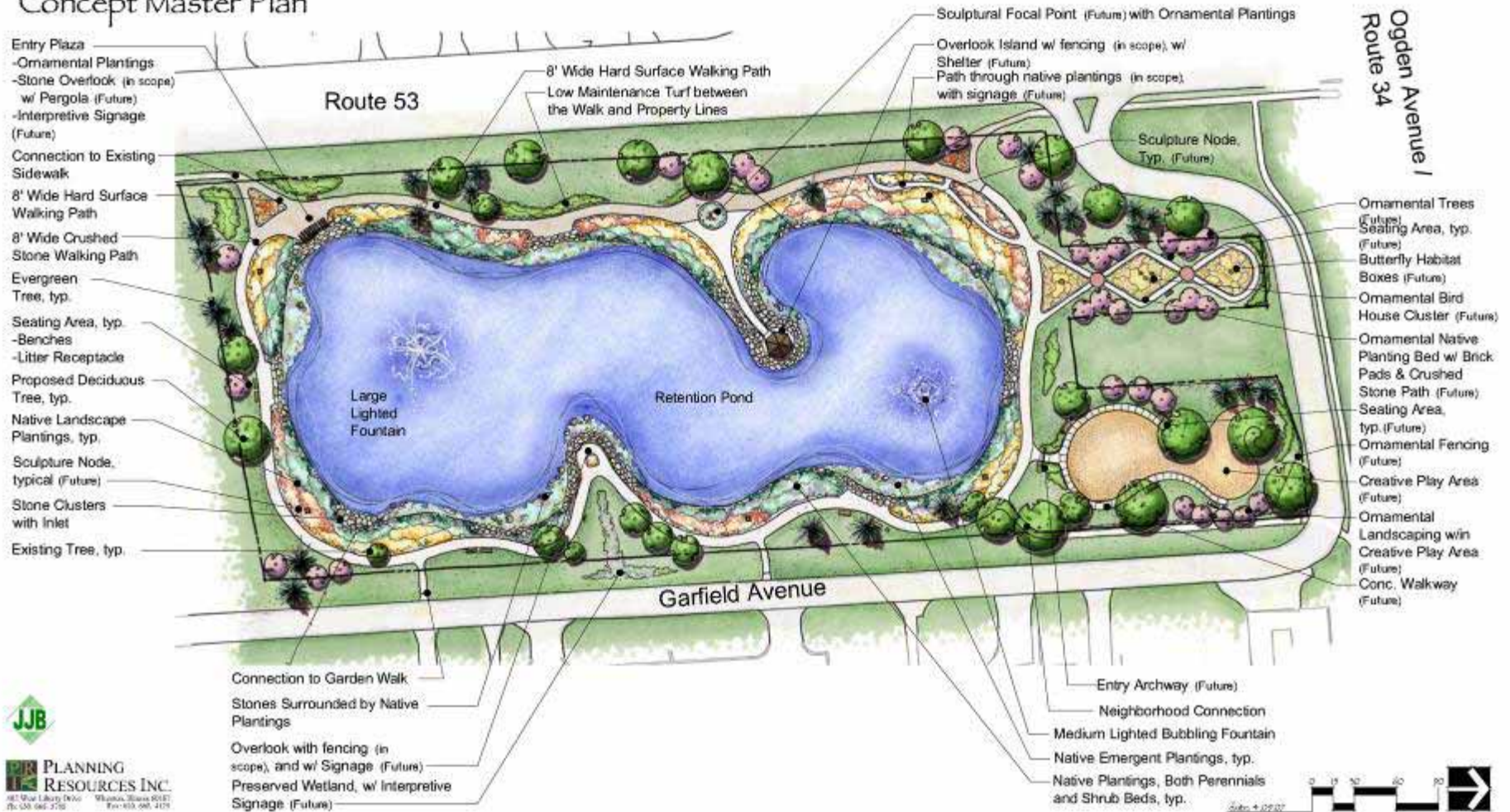
Plug Plantings



OSLAD Project

Garfield Avenue Park
Lisle, Illinois

Concept Master Plan



**PLANNING
RESOURCES INC.**
461 West Liberty Street, Suite 200
Lisle, IL 60532
Tel: 630.946.3700 Fax: 630.946.4101

DragonFly Landing

Lisle Play and Spray

Lisle, Illinois



Creative Play Area Concept Plan

0' 10' 20' 40'







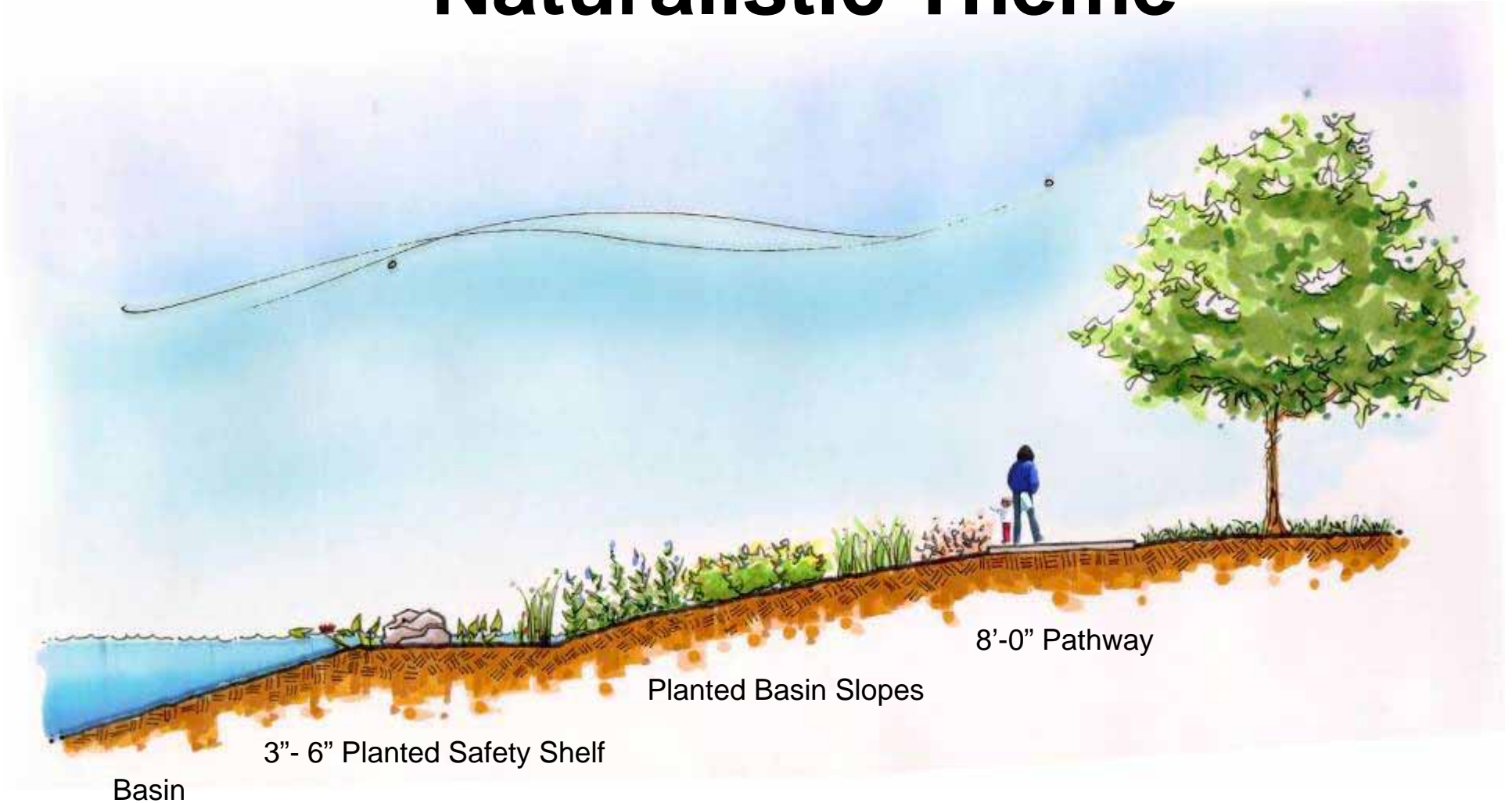
Green Components/Benefits

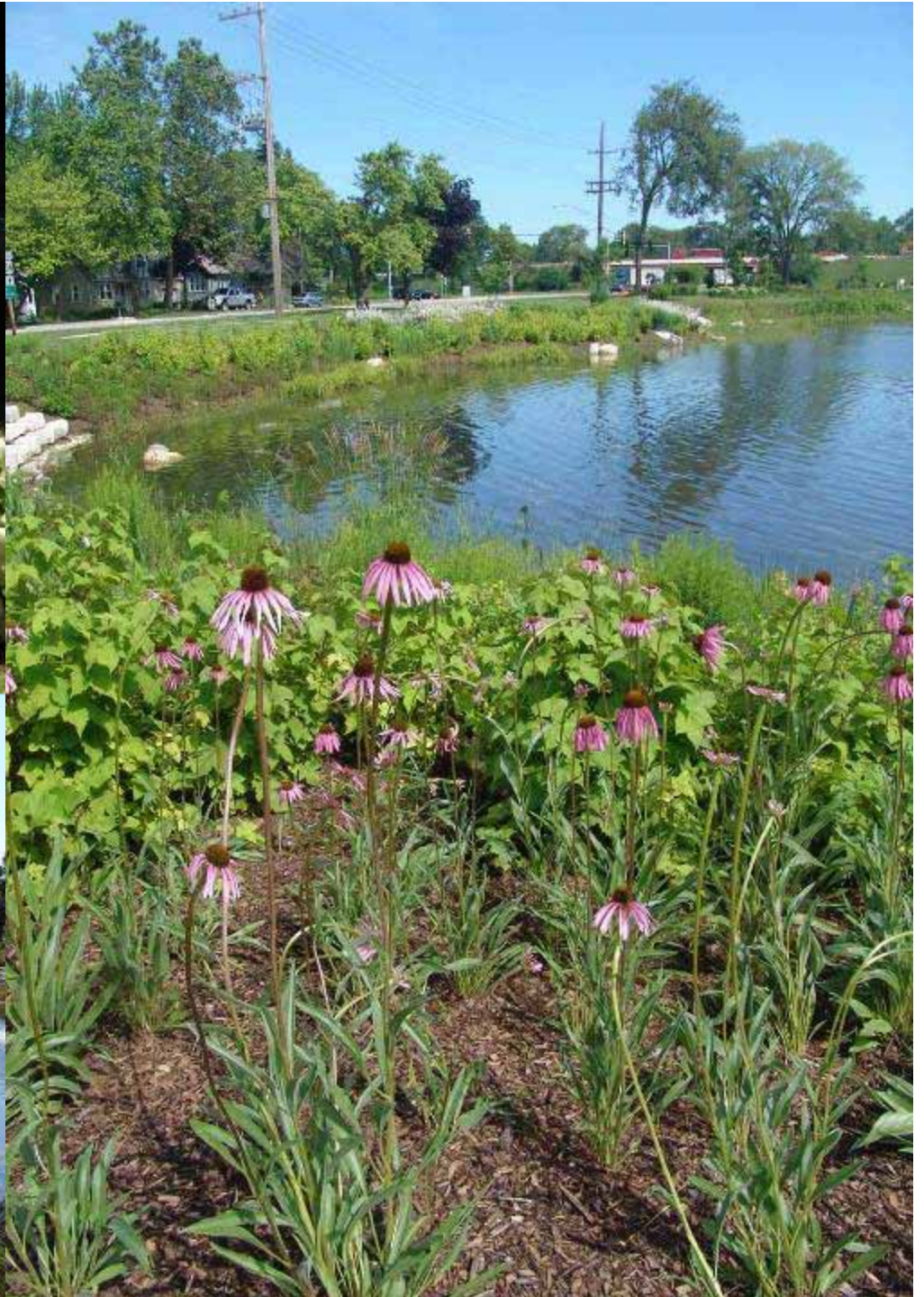


Native Plants



Naturalistic Theme





Green Components/Benefits



Wetland Enhancement

Green Components/Benefits



Green Roof

Green Components/Benefits



Permeable Pavers

Green Components/Benefits



LED Lighting

Green Components/Benefits



Water Conservation



Green Components/Benefits



Aeration of Water



Project Construction Costs

- Basin, storm sewers, structures
 - Plantings
 - Recreational amenities: trails, lighting, playground, shelters, splash park, etc.
 - OSLAD grant reimbursement
 - Total:
- \$1.885 million
 - \$115,000
 - \$800,000
 - -\$400,000
 - \$2.4 million





Named One of *Money Magazine's*
TOP 20 "BEST PLACES TO LIVE"
in America

