

ILLINOIS INTERAGENCY LEVEE WORK GROUP

2009 IAFSM
ANNUAL CONFERENCE

11 MARCH 2009



US Army Corps
of Engineers



FEMA



ILWG MEMBERS

One-year effort started in August 2008 with the following agencies:

- Illinois Emergency Management Agency
- Illinois Department of Natural Resources
- Illinois Department of Commerce and Economic Opportunity
- USDA-Natural Resources Conservation Service
- U.S. Small Business Administration
- U.S. Fish & Wildlife Service
- Federal Emergency Management Agency
- U.S. Army Corps of Engineers



US Army Corps
of Engineers.



FEMA



ILWG PROCESSES

PROJECT INFORMATION REPORT
PL 84-99 REHABILITATION OF DAMAGED
FLOOD CONTROL WORKS

INDIAN GRAVE DRAINAGE DISTRICT
ADAMS COUNTY, ILLINOIS
MISSISSIPPI RIVER
13 August 2008



US Army Corps
of Engineers
Rock Island District

- Stationed at JFO in Springfield, IL
- Meet, discuss, and coordinate efforts
- Review repair activities
- Work jointly on recovery efforts
- Communicate and share information
- Develop and present recommendations



US Army Corps
of Engineers

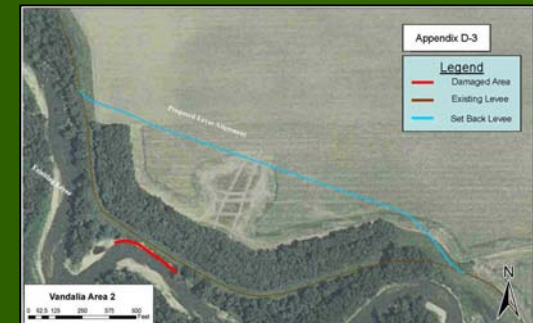


FEMA



ILWG FOCUS

- Coordinate Levee Repair application – report – construction
- Reduce Future Flood Risk near-term & long-term



US Army Corps of Engineers



FEMA

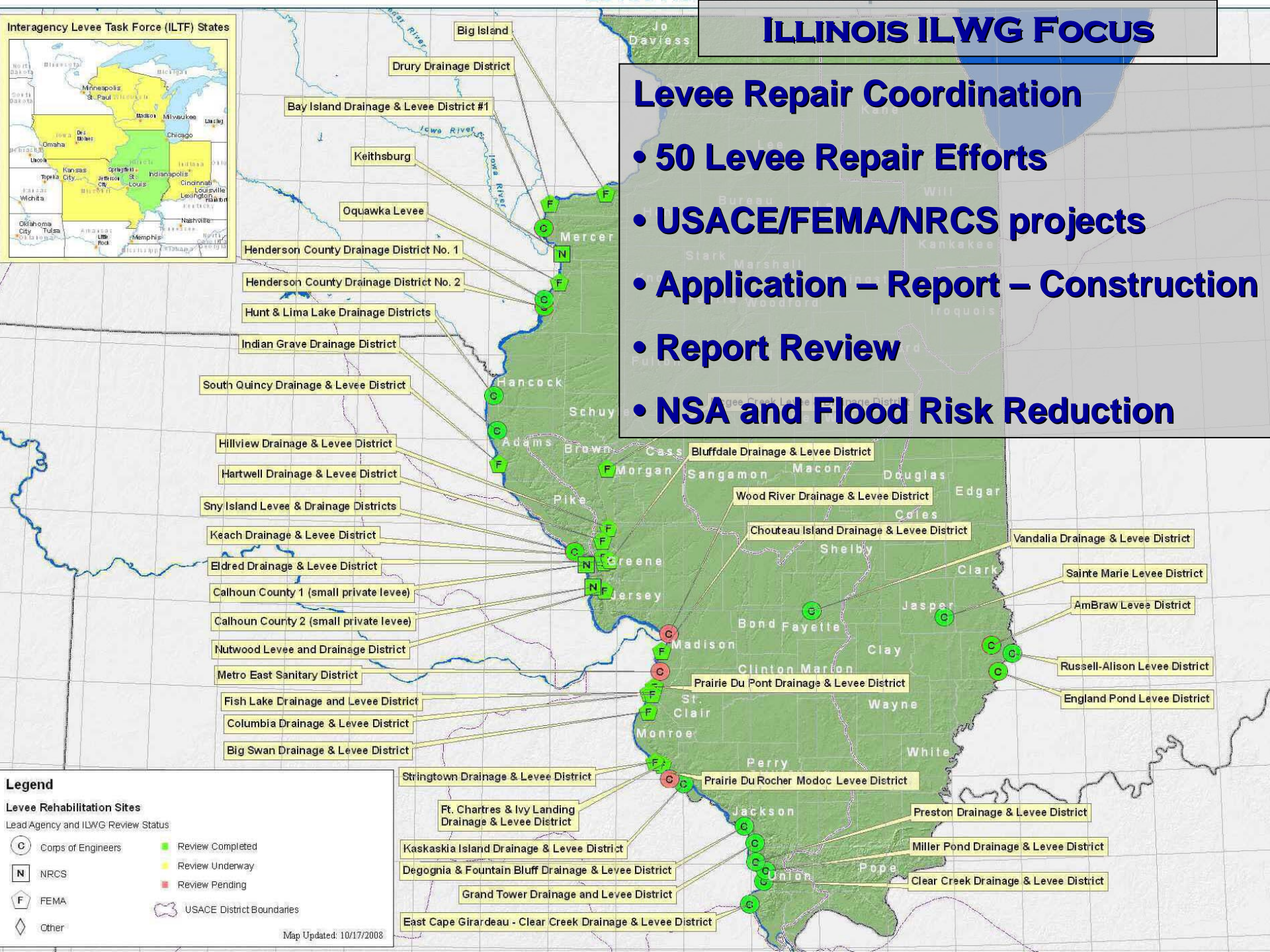


ILLINOIS ILWG FOCUS

Levee Repair Coordination

- 50 Levee Repair Efforts
- USACE/FEMA/NRCS projects
- Application – Report – Construction
- Report Review
- NSA and Flood Risk Reduction

Interagency Levee Task Force (ILTF) States



Legend

Levee Rehabilitation Sites

Lead Agency and ILWG Review Status

- (C) Corps of Engineers
- (N) NRCS
- (F) FEMA
- ◇ Other
- Review Completed
- Review Underway
- Review Pending
- USACE District Boundaries

Map Updated: 10/17/2008

ILWG FOCUS

- **Reduce Future Flood Risk
(near-term & long-term)**

- **Identify Opportunities for Non-Structural Alternatives and other Flood Risk Reduction Measures**
- **Develop Integrated System Solutions**
- **Identify Needed Process & Policy Change**
- **Prepare Doc.s to Share Recommendations**



US Army Corps
of Engineers

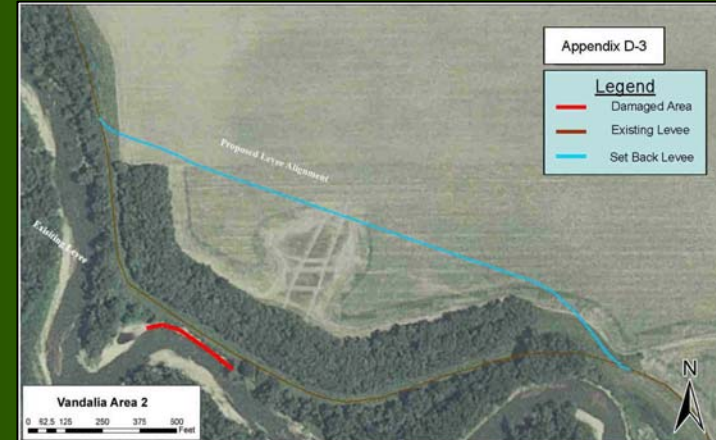


FEMA



FLOOD RISK REDUCTION MEASURES

- Levee Setback
- Relocating/Elevating
- Levee, Floodwall, and Berm Augmentation
- Buyout/Acquisition
- Dry/Wet Flood Proofing
- Flood Warning/Preparedness
- National Flood Insurance Program
- Crop Insurance Program
- Wetland Reserve Program
- Floodplain Easement Program
- Flood Easements
- Environmental Restoration
- Land use Modification
- Floodways/Temporary Flood Storage Areas



FEMA



POTENTIAL FUNDING SOURCES

- **USACE: PL 84-99 Program**
- **FEMA: Hazard Mitigation Grant Program**
- **FEMA: Pre-Disaster Mitigation Program**
- **NRCS: Wetland Reserve Program**
- **NRCS: Flood Easement Program**
- **HUD: Community Development Block Grant**
- **IDNR: Program to Acquire Floodprone Properties**
- **National Flood Insurance Program**



US Army Corps
of Engineers



FEMA



ILWG RECOMMENDATION

POLICY MODIFICATION

- **Make Better Use of Current Authorities to Reduce Flood Risk**
 - FEMA Public Assistance 406
- **Perform One-year Studies to Develop Best Long-term Solution**
 - USACE PL-84-99
 - Structural & Non-structural, Benefit/Cost, Funding Options
- **Offset Cost of Land use Change**
 - NRCS Wetland Reserve and Floodplain Easement Prog.s



US Army Corps
of Engineers



FEMA



ILWG RECOMMENDATION OUTREACH

- Better Communicate Flood Risk and Ways to Reduce it
- Message Consistency and Common Language
- Simple Understandable Information
- Multi-Agency Communication Strategy Plan



US Army Corps
of Engineers.



FEMA



CURRENT ILWG PRIORITIES

- Levee Repair Coordination
- White Papers: NSA, Policy and Process Recommendations
- Illinois Long Term Recovery Council
- Silver Jackets



Illinois Interagency Levee Work Group
Levee Setback Non-structural Alternative
Vandalia Drainage and Levee District

Purpose
 This document serves three primary purposes through the efforts of the Illinois Interagency Levee Work Group (ILWG) to reduce future flood risks to the state and region. It will assist the ILWG and Project Team in discussing and coordinating a setback levee non-structural alternative (NSA) being proposed for the Vandalia Drainage and Levee District. The document will inform the Regional Interagency Levee Task Force (ILTF) about the proposed NSA to help coordinate similar efforts in other Midwestern states and potentially modify policy if needed. Finally, ILTF/ILWG partner agencies can use this document to inform the public and interested applicants about the benefits offered through NSAs.

Project Site Description
 The Vandalia Drainage and Levee District is located in Fayette County in south-central Illinois along the Kaskaskia River (Figure 1). The levee system was designed to protect 12,000 acres of highly productive agricultural lands. The 16.5 miles of clay levee raking up the district protect the internal area from up to a five-year flood event.

Assessment of Damages
 The Vandalia levee system was damaged by a large flood event that occurred in the spring of 2018. Two areas in the southern portion of the system experienced severe erosion with the toe of the levee being scoured away (Figure 1, two circled areas). This is an ongoing issue with the levee system (currently being repaired about once every five years) because it closely follows the meandering channel of the Kaskaskia River. The close proximity of the levee to the stream does not allow for standard maintenance to protect it from damages caused during moderate to severe flood events.

11-19-2018



FEMA



Hank DeHann

Henry.C.DeHann@usace.army.mil

309/794-5853



US Army Corps
of Engineers®



FEMA

