

TWIN ORCHARD COUNTRY CLUB DRAINAGE IMPROVEMENTS IASFM 2010 CONFERENCE

March 10, 2010

Presented by:

Donald R. Dressel, PE, CFM

Christopher B. Burke Engineering, Ltd.



SR 22

South Branch Indian Creek

Outlet #1

Outlet #2

SR 83

Old Mchenry Rd

Aptakisic Rd





DRAINAGE IMPROVEMENT PLAN DEVELOPEMENT

DRAINAGE PROBLEMS

- Existing Drainage System Capacity is Exceeded on a Yearly Basis
- Various Portions of the Two 18-Hole Courses are Inundated
- Damages to the Courses Include Dead Bend Grass Fairways (Depth & Duration), Loss of Revenue Due to Course Closure (Duration), Erosion and Debris

DRAINAGE PROBLEM CAUSES

- Not Enough Storage Volume Available
- Deteriorating and Undersized Infrastructure
- Downstream Outlet Restrictions (Failed 18" Field Tile)

DRAINAGE IMPROVEMENT PLAN DEVELOPEMENT

PROJECT OBJECTIVE: REDUCE FREQUNECY AND MAGNITUDE OF FLOODING

SOLUTION:

- Additional Stormwater Storage at Effective Locations
- Floodplain Fill to Raise Fairways (Reduce Frequency, Depth & Duration of Inundation)
- New Storm Sewers
- Replace Failed 18" Field Tile

ISSUES:

- Location of Stormwater Storage Basins?
- Look and Feel of Stormwater Storage Basins?



SCALE 1" = 800'
0 200 400

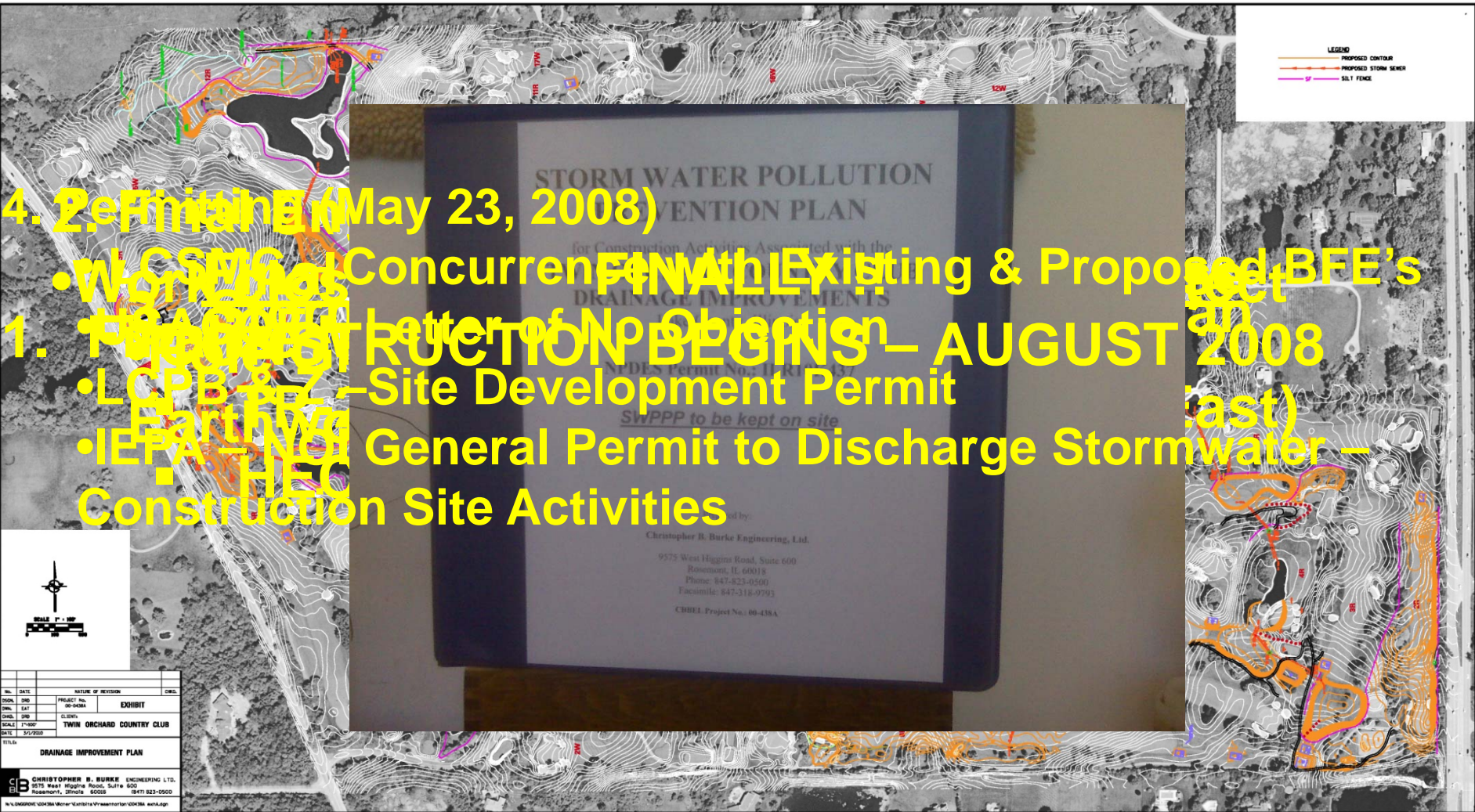
First Step
Subbasin
Work with CC Members, Municipal Golf Course Architect
Renald C. Cleveland, Southern Illinois charges for each Basin
Identify Locations for SW Storage
Use Data from Conditions Approval of Plan
Developed Conditions Look and Feel of Basins
Cost

- LEGEND**
- EAST SUBBASIN DIVIDE
 - WEST SUBBASIN DIVIDE
 - ① EAST SUBBASIN ID
 - ② WEST SUBBASIN ID
 - PROPERTY BOUNDARY
 - ⑩ EAST STORMWATER BASIN
 - ⑩ WEST STORMWATER BASIN
 - OVERFLOW DIRECTION
 - PROPOSED POND EXPANSION
 - 8R HOLE NUMBER

No.	DATE	NATURE OF REVISION			CHKD.
DSGN.	MDC	PROJECT No. 00-438A	EXHIBIT		TWIN ORCHARD COUNTRY CLUB
DWN.	EAT				
CHKD.	DRD	CLIENT:			
SCALE	1"=200'				
DATE	3/1/2010				
TITLE:					
PROPOSED CONDITIONS SUBBASIN DIVIDE					
C B CHRISTOPHER B. BURKE ENGINEERING LTD. 9575 West Higgins Road, Suite 600 Rosemont, Illinois 60018 (847) 823-0500					
N:\LONGROVE\00438A\Water\Exhibits\00438Aexh.PRI.dgn					

4. 2. Final EIR (May 23, 2008)

- CSMG Concurrent FEN with Existing & Proposed BFE's
- Work Starts
- 1. • Construction Begins – AUGUST 2008
- LCPB #2 – Site Development Permit
- Earthwork
- IEPA – Not General Permit to Discharge Stormwater –
- HEC
- Construction Site Activities





QUESTIONS

