



Engineering Quality of Life™

# Town of Normal Sugar Creek North Branch Streambank Stabilization Project

March 8, 2022

Chris Gutkowski, P.E.

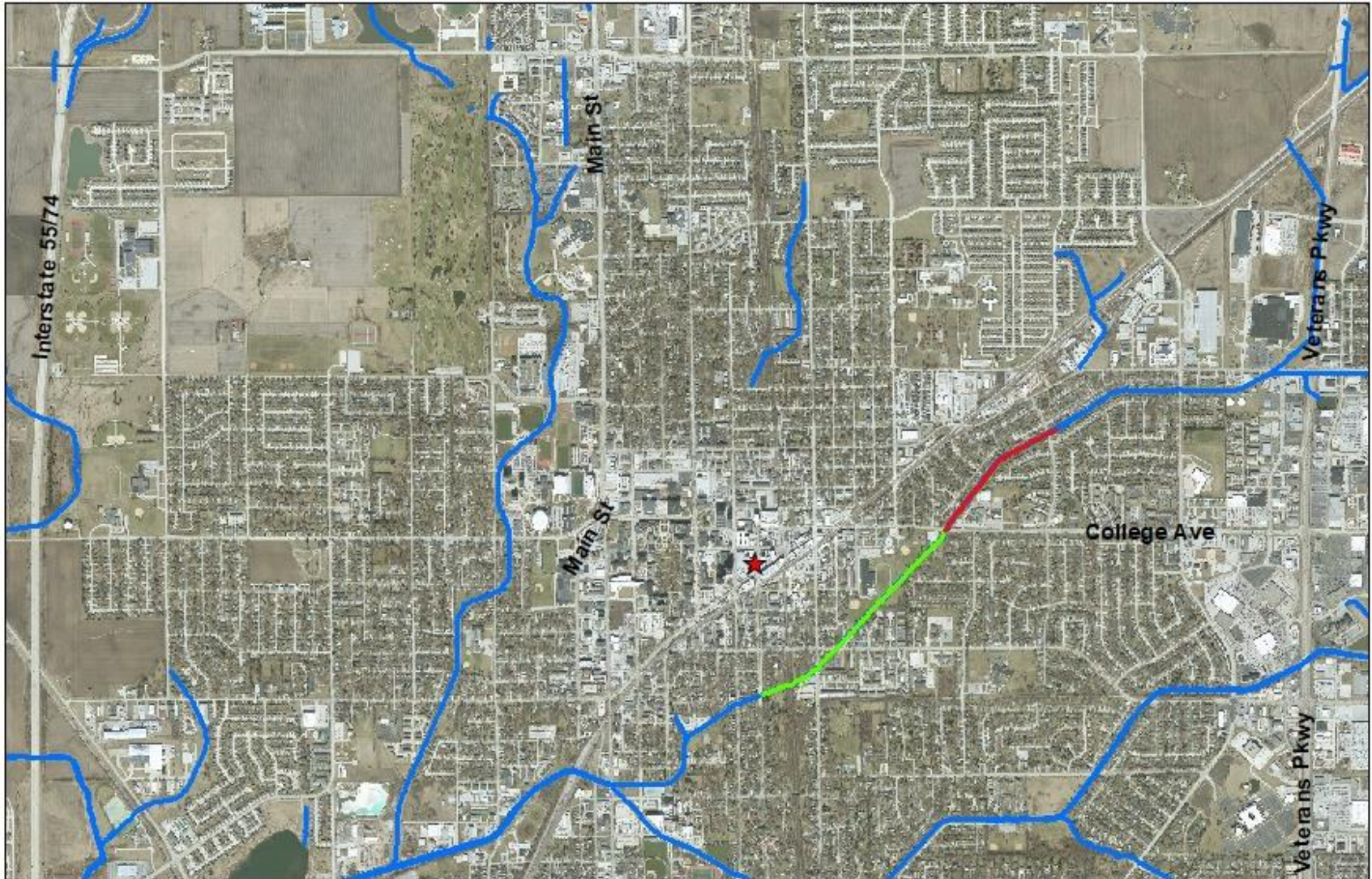


# Project History

- › Sugar Creek Study (West and North Branch): Summer 2010 – Fall 2011
- › West Branch Improvements (Fairview Park): Spring 2012 – Spring 2014
- › North Branch Improvements (Anderson Park): Spring 2014 – Spring 2016
- › North Branch Improvements (Project 2): Summer 2019 – Spring 2021

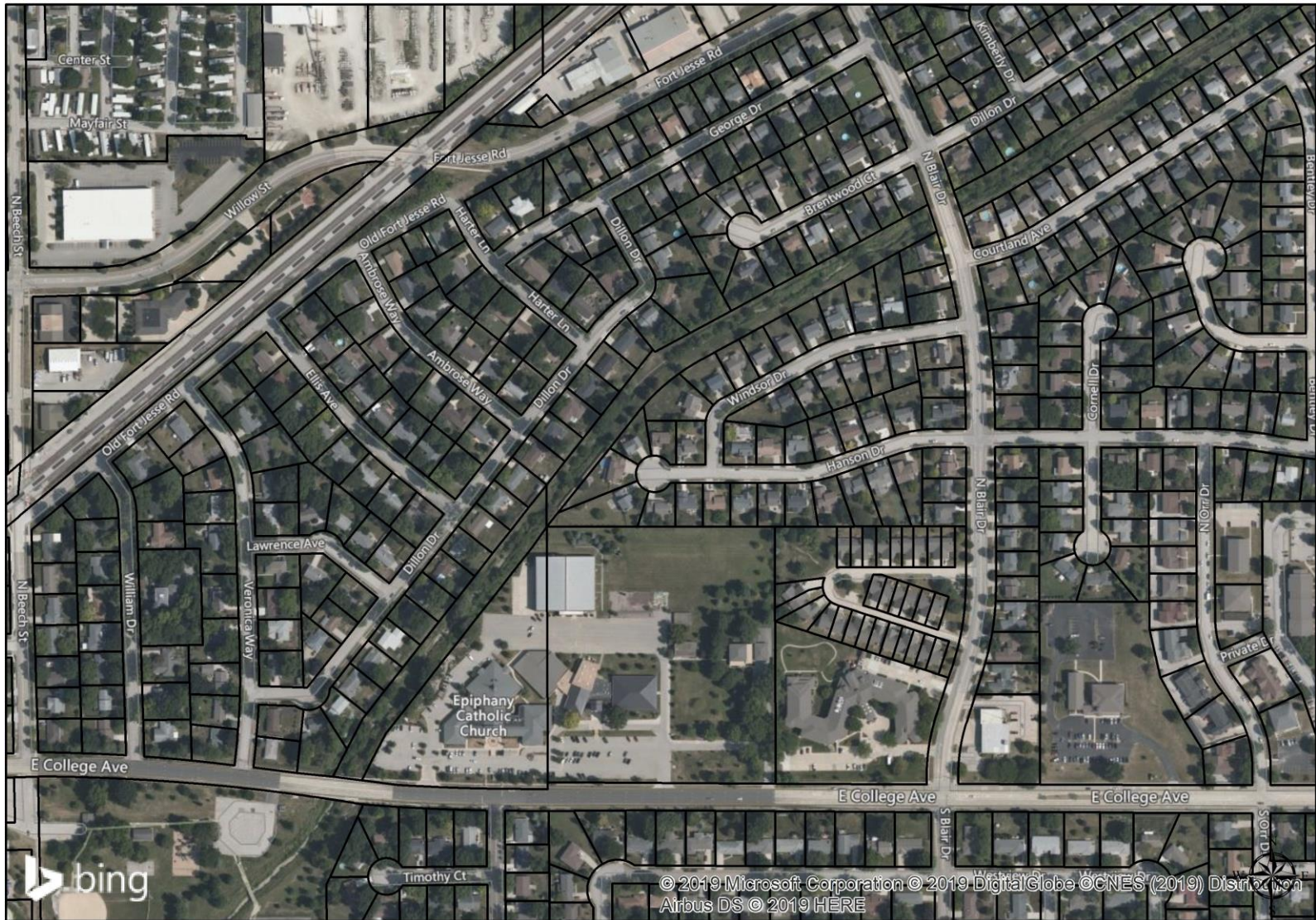


# Study Area





# Channel Improvement Area





# Project Goals

- › Repair Bank Erosion
- › Preserve
  - Mature Trees
  - Resident Property
  - Channel Capacity
- › Enhance
  - Safety
  - Maintenance Access





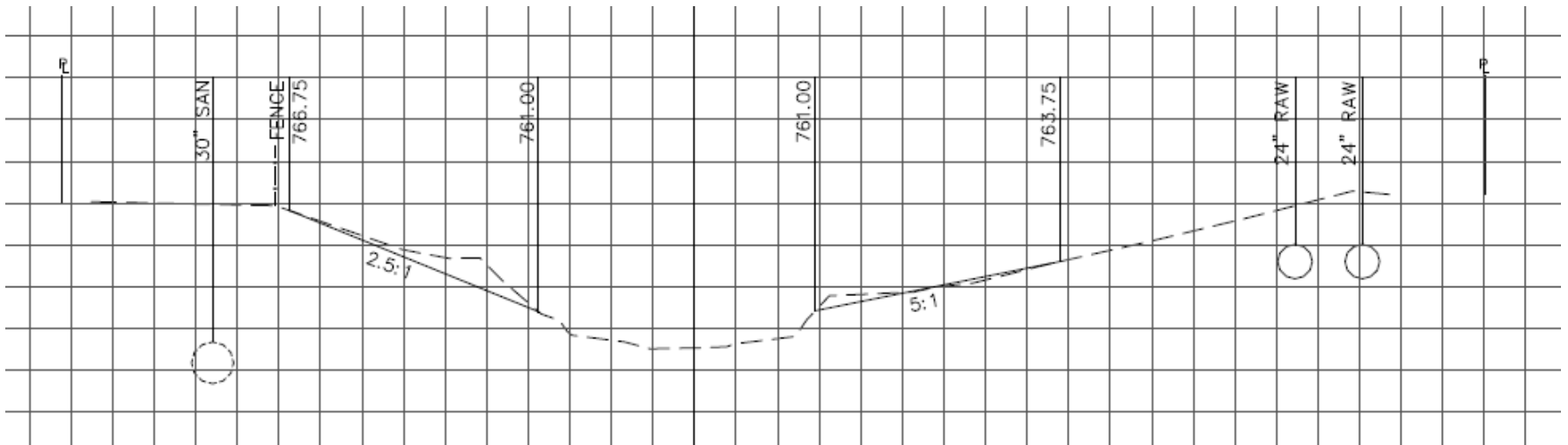
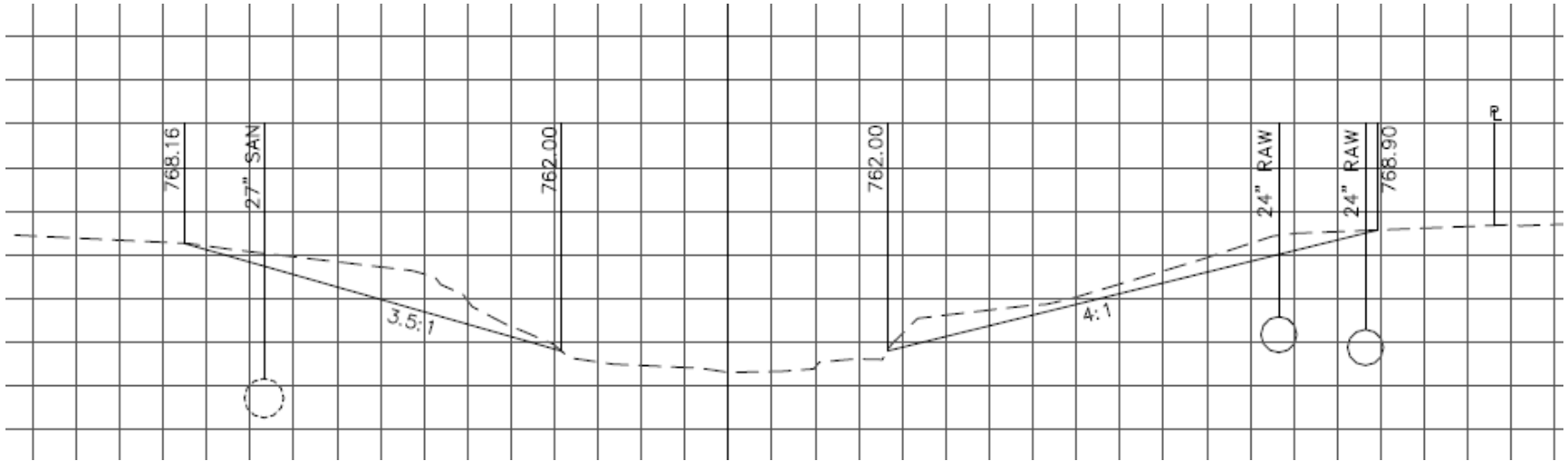
# Project Challenges

- › Existing Vegetation
- › Utilities
- › Site Access
- › Limited Town ROW
- › Sewer Outfalls
- › Regulatory Requirements



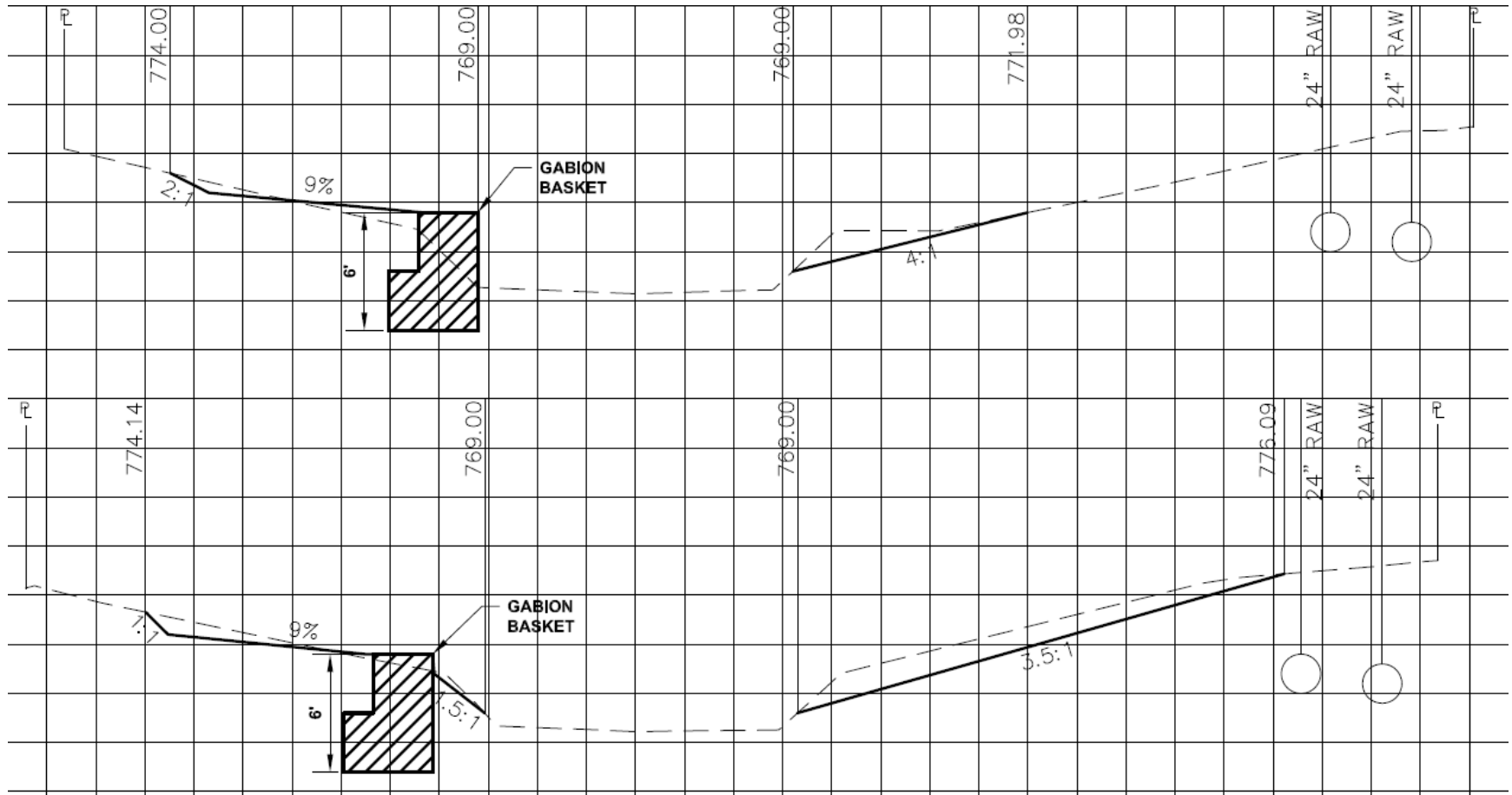


# Proposed Improvements





# Proposed Improvements





# Pre-Construction



Project 1



# Pre-Construction



Project 1



# Pre-Construction



Project 1



# Pre-Construction



Project 1



# Pre-Construction



Project 1



# Pre-Construction



Project 1



# Post-Construction

Project 1





# Post-Construction



Project 1



# Post-Construction



Project 1



# Post-Construction



Project 1



# Pre-Construction





# Pre-Construction

Project 2





# Pre-Construction



Project 2



# Pre-Construction



Project 2



# Pre-Construction



Project 2



# Pre-Construction



Project 2



# Pre-Construction

Project 2





# Pre-Construction



Project 2



# Pre-Construction

Project 2





# Streambank Clearing



Project 2



# Streambank Clearing



Project 2



# Streambank Clearing



Project 2



# Streambank Clearing



Project 2



# Streambank Clearing



Project 2



# Streambank Clearing



Project 2



# Grading





# Grading



Project 2



# Grading



Project 2



# Grading





# Retaining Wall





# Retaining Wall





# Retaining Wall





# Retaining Wall



Project 2



# Streambank Stabilization



Project 2



# Streambank Stabilization



Project 2



# Streambank Stabilization



Project 2



# Post-Construction



Project 2



# Post-Construction



Project 2



# Post-Construction



Project 2



# Post-Construction





# Post-Construction





# Installation and Operation

## › Installation

- Spring 2022 – Reseed and Repair (if necessary)
  - 3-Year Vegetation Warranty that includes 2 Growing Seasons

## › Operation and Maintenance

- Defined ROW Area and Mow Limits
- Annual Removal of Invasive Species and Trees
- Remove Debris and Excess Vegetation (as required)
- Address Illegal Dumping of Grass Clippings and Landscape Debris

The background consists of a solid blue field with a series of concentric diamond shapes (squares rotated 45 degrees) in a lighter shade of blue. The diamonds are centered and expand outwards from the middle of the frame.

**THANK YOU**