



# DUPAGECOUNTY

## STORMWATER MANAGEMENT

# Countywide NPDES Partnership

## IAFSM Conference

# Background

## DuPage County, IL

- Located just west of Chicago/ Cook County
- Population: 926,000 (2<sup>nd</sup> most populous in IL)
- 336 square miles



**DUPAGECOUNTY**



STORMWATER MANAGEMENT

# Who Are We?



## Stormwater Management in DuPage County

- Countywide program established in 1989
- Guided by the Stormwater Management Planning Committee & Plan
- Enforce the Countywide Stormwater Management & Floodplain Ordinance
- Flood Control Facilities have a floodwater capacity of nearly 6 billion gallons

### Programs

- Watershed Management
- Water Quality
- Floodplain Mapping
- Regulatory Services
- Flood Control Operations & Maintenance

# Water Quality Program



## Major Programs

- NPDES Permit Compliance
- Water Quality Improvement Program Grant
- Water Quality Projects
- Storm Sewer Atlas
- Spill Response

# Countywide NPDES Partnership

## Over 40 MS4s in DuPage County

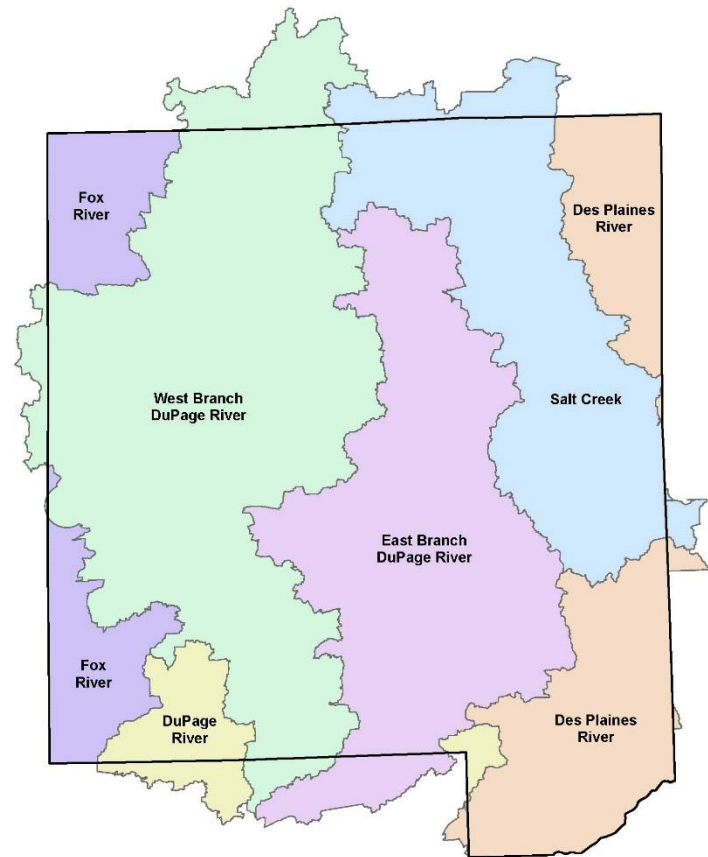
- Municipalities, Townships, County

### Major Watersheds

- East Branch DuPage River
- West Branch DuPage River
- Salt Creek

### Partial Watersheds

- Des Plaines River, Fox River, DuPage River mainstem



# Countywide NPDES Partnership



## What is Watershed-Based NPDES Permitting?

“**Consideration of watershed goals** and **impact of multiple pollutant sources** and stressors, including nonpoint source contributions”

“The ultimate goal of watershed-based NPDES permitting, however, is to develop and issue **NPDES permits that consider the conditions of the entire watershed** and address the diverse sources within the watershed, **not just an individual point source discharger**”

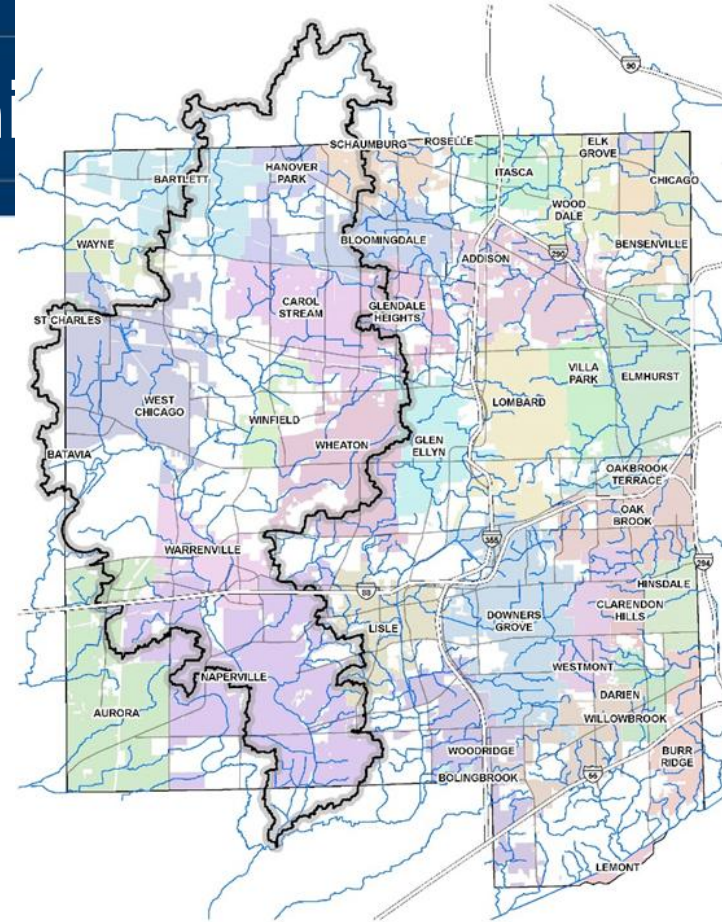
[https://www.epa.gov/npdes/pubs/watershedpermitting\\_finalguidance.pdf](https://www.epa.gov/npdes/pubs/watershedpermitting_finalguidance.pdf)



# Countywide NPDES Partnership

## Example:

- 15 municipalities discharging under MS4 permit into West Branch DuPage River
- 15 permit holders sharing education, outreach, public participation, outreach, illicit discharge detection and elimination requirements
- DuPage County Countywide Stormwater and Flood Plain Ordinance



**DUPAGECOUNTY**



STORMWATER MANAGEMENT

# Countywide NPDES Partnership



## Benefits

- Reducing the reporting burden
- Eliminate overlap and redundancy
- Link to watershed planning – address watershed goals
- Cooperation on watershed efforts
- Increase public involvement



# Minimum Control Measure #1

## Education and Outreach

- Publications
- Community Events
- Social Media
- Classroom Education



# Minimum Control Measure #2

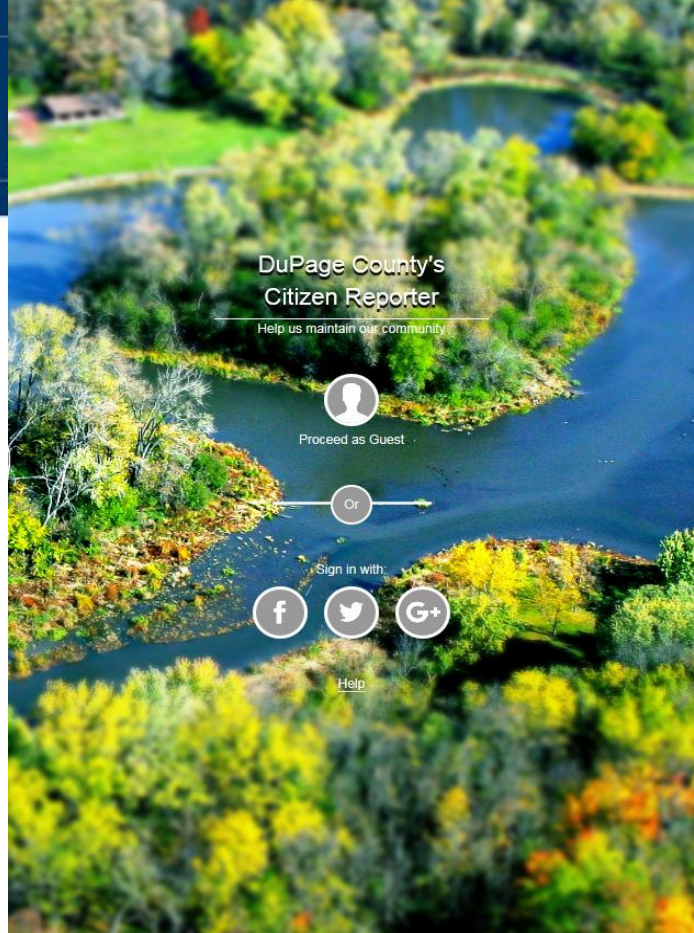
## Public Involvement and Participation

- Stakeholder Meetings
- Watershed Workshops
- Public Meetings
- Volunteer Opportunities
- Environmental Justice Areas

## DuPage County Citizen Reporter

- Waterway Reporter

<https://gis.dupageco.org/CitizenReporter/>



# Minimum Control Measure #3



## Illicit Discharge Detection and Elimination

- Comprehensive countywide storm sewer atlas
- Prioritization plan
- Dry weather screening schedule
- Visual screening and field testing
- Tracing
- Enforcement
- Education and training





# Minimum Control Measure 4 & 5



## Construction Site Runoff Control & Post Construction Best Management Practices

- Development driven measures
- Inspections before, during and after construction
- Provide guidance and resources

## DuPage County Countywide Stormwater and Flood Plain Ordinance

- Outlines community waiver status
- Sets minimum regulatory thresholds



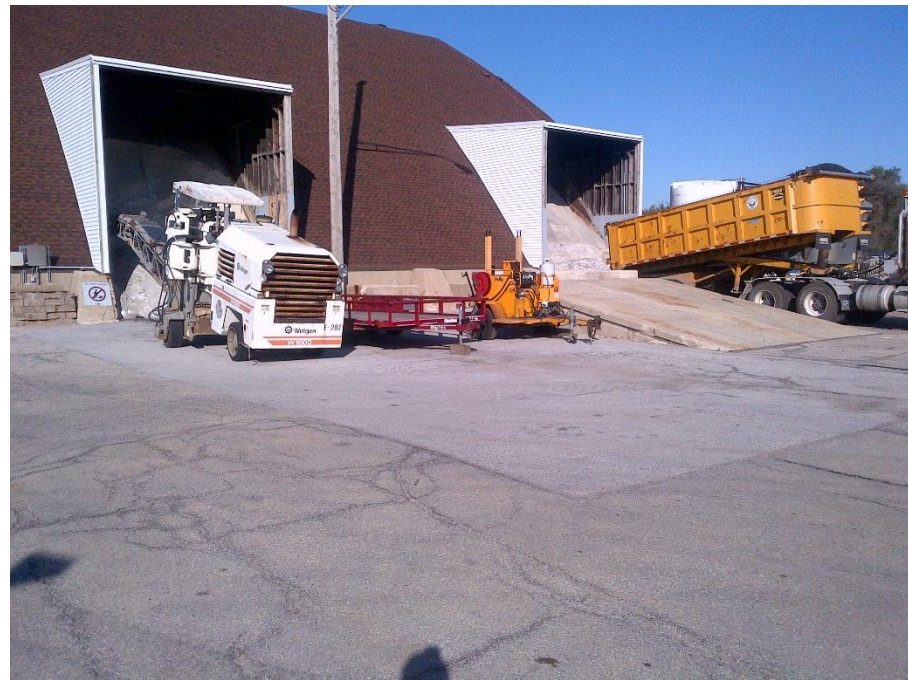
# Minimum Control Measure #6

## Pollution Prevention / Good Housekeeping

- Annual training for MS4 employees and contractors
- Guidance materials/ checklists
- Each MS4 responsible for day to day operations

## Shared Services

- Utilize cost savings by utilizing County equipment, vehicles and personnel





# Monitoring

## DuPage River Salt Creek Workgroup

- Bioassessment
- Water chemistry
- Sediment
- Continuous monitoring (Sondes)

## Countywide BMP Inventory

- Map in progress
- Modeling effectiveness of pollutant reduction efforts



Photo courtesy of DRSCW.org



# Reporting



## Annual Facility Inspection Reports

- Over 40 MS4s → Over 40 Reports
- Duplicate information or refer to County program
- One comprehensive report will be more efficient for MS4s and IEPA



**DUPAGE**COUNTY



STORMWATER MANAGEMENT

# Shared Services



## Equipment

- Rates based on IDOT rate book / now equipmentwatch.com
- List of equipment available, but will vary year to year
- Save money
- Dispatch crew and equipment quickly once agreement is in place

## Will County/Dual County Communities

- Developed costs based on Staff time and Direct Expenses
- Rates based on IDOT rate book / now equipmentwatch.com
- List of equipment available, but will vary year to year
- IDDE/Education/Outreach/Spill Response
- Reduce costs and expedite services

# Summary



## Environmental Benefits

- Link to watershed planning – address watershed goals
- Cooperation on watershed efforts
- Increase public involvement

## Eliminate Overlap & Redundancy

- Current state has many duplicate efforts
- Reducing the reporting burden (time & money)

# Countywide NPDES Partnership



## Next Steps

- IGAs with municipalities and townships
- 24 completed to date
- Submit draft NOI to IEPA and municipalities for review and comment
- Comments/ discussion
- Formally submit NOI to IEPA

# Questions?



## Mary Beth Falsey

Water Quality Supervisor

DuPage County Stormwater Management

(630) 407-6680

[marybeth.falsey@dupageco.org](mailto:marybeth.falsey@dupageco.org)



**DUPAGECOUNTY**



STORMWATER MANAGEMENT