

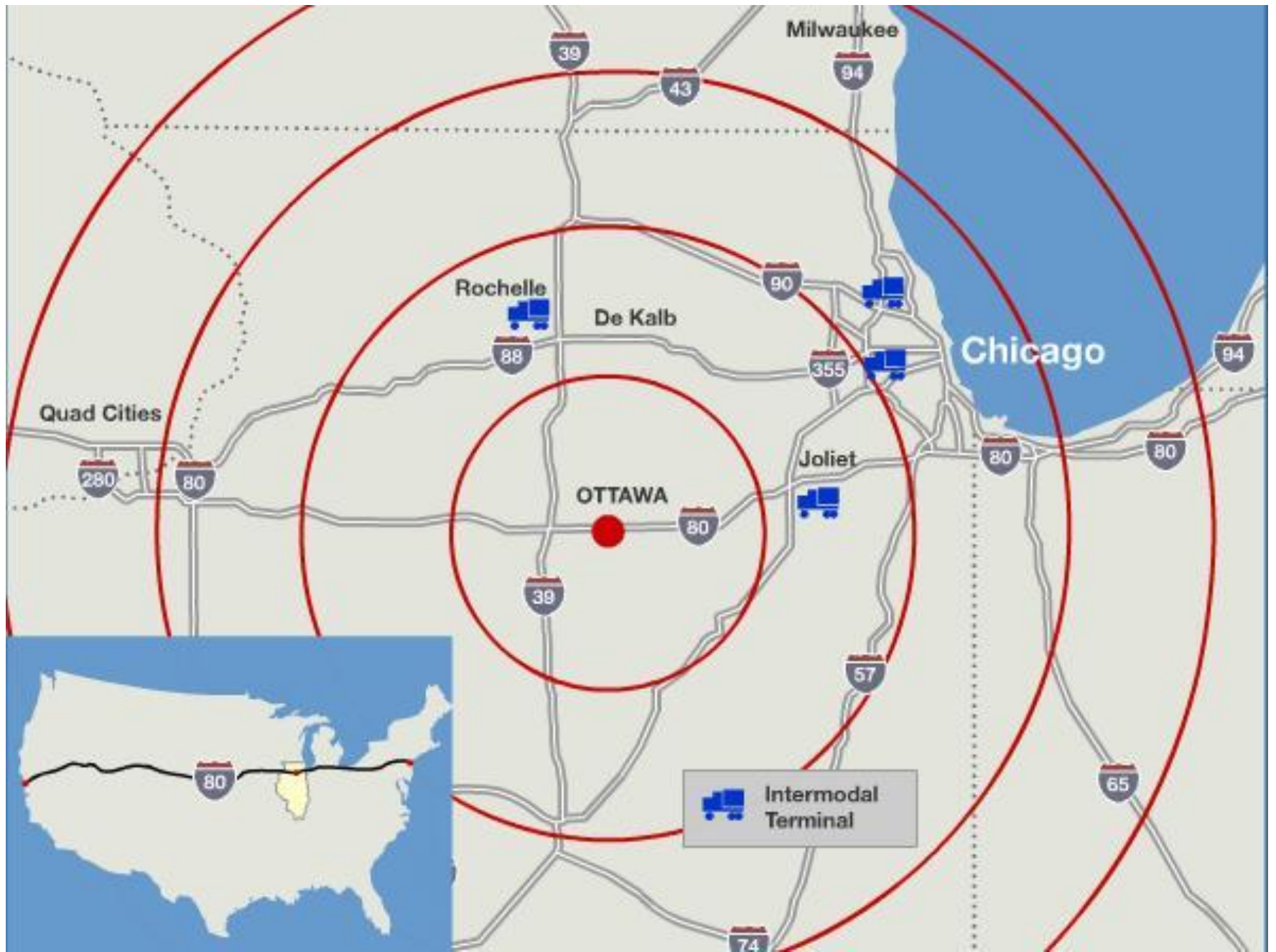
# **Flow Modeling, Mapping & H&H Done**



**What Happens Next?**

**FLOW MODELING,  
MAPPING AND H&H  
STUDIES ALLOW US TO  
OPEN THE FLOODPLAIN  
MANAGEMENT TOOL KIT.**

**MAPPING AND CENTRAL  
SCHOOL**





**Often referred to as Louis Joliet's panoramic campground, the town of "Two Rivers" is also the dumping grounds for almost 12,000 square miles of watershed**



Illinois River

Fox River

Illinois River  
September 16, 2008

Central School



# DISASTER STRIKES

**INITIAL ASSESSMENT**

**3 RESIDENTIAL SUBSTANTIAL DAMAGE**

**COST ESTIMATES FOR THE SCHOOL**

**PRE-FLOOD APPRAISAL FOR SCHOOL**



**RECONSTRUCTION COST BREAKDOWN**

Information from 12 November 2008 BREAKDOWN indicated with lighter text.

Information added since 12 November 2008 version in darker text.

ITEM	Source	Units <sup>[2]</sup>	Unit Cost	TOTAL	
				Selective (insurance Company reimbursed)	ESD 141 (district cost)
First Floor Tile Removal	Trimark	27,000	\$0.00	\$0	
First Floor Tile Removal Reconstruction	Trimark	27,000	\$5.52	\$149,040	
First Floor Tile Removal Reconstruction - asbestos : "difference"	GA	27,000	\$3.20		\$86,400
First Floor Tile Removal	GA	3,000	\$0.00	\$0	
First Floor Tile Removal Reconstruction	GA	3,000	\$5.52	\$16,560	
First Floor Tile Removal Reconstruction - asbestos : "difference"	GA	3,000	\$3.20		\$9,600
Second Floor	GA	13,500	\$8.72		\$117,720
Other improvement/restoration costs	Trimark	LS		\$498,790	
Remediation of pipe tunnel/crawl	GA	LS			\$100,000
Reinsulation of pipe tunnel/crawl	GA	LS			\$30,500
"Capping" of crawlspace floor to "encapsulate" contaminated earth	GA	LS			\$255,000
Supplemental crawlspace drainage system	GA	LS			\$0
Emergency generator					\$0
Auditorium ceiling - abate asbestos plaster ceiling damaged by water (5,200 SF)	GA	LS			\$0
Auditorium ceiling - reconstruct; new plaster + lighting and allowance to adapt HVAC	GA	LS			\$0
Boiler restoration (Potential value of Trimark underestimated amount. \$75,000 is inc. in above)	Trimark	LS		\$25,000	
Boiler restoration (Owner requested improvements)	GA	LS			\$0
Replace Repair fire alarm system <sup>[4]</sup>	GA	LS			\$3,207
Door hardware upgrade <sup>[1]</sup>	GA	34	\$300.00		\$0
Sand and refinish gym floor	GA	5,850	\$4.00		\$0
Paint Gym	GA	9,300	\$1.90		\$0
Paint Corridors - first floor	GA	11,000	\$1.30		\$0
Paint Corridors - second floor	GA	2,000	\$1.30		\$0
Paint Classrooms - second floor	GA	21,000	\$1.30		\$0
<b>Sitework</b>					
Hazardous material remediation <sup>[5]</sup>					
Responsibility for cost needs to be determined.	GA	LS			\$0
<b>SUBTOTAL</b>				<b>\$689,390</b>	<b>\$602,427</b>



City Commissioners  
Daniel F. Aussem  
Accounts & Finance  
  
Edward V. Whitney  
Public Health & Safety  
  
Dale F. Baxter  
Streets & Public Improvements  
  
Wayne A. Eichelkraut, Jr.  
Public Property

# CITY OF OTTAWA

ROBERT M. ESCHBACH  
MAYOR

301 W. MADISON STREET, OTTAWA, ILLINOIS 61350



Pool, Leigh & Kopko  
Corporation Counsel  
  
Donald J. Harris  
City Treasurer  
  
David A. Noble  
City Engineer  
  
Shelly L. Munks  
City Clerk  
  
Phone: 815-433-0161  
Fax: 815-433-2270  
www.cityofottawa.org

February 11, 2009

Richard A. Myers  
Regional Superintendent of Schools  
119 W. Madison St. Rm 102  
Ottawa, Illinois 61350

Re: Substantial Damage, Central School

Subsequent to the recent flooding event, a damage assessment has been completed on the property referenced above. This is part of the City of Ottawa's floodplain management responsibilities in order to maintain the availability of flood insurance and disaster assistance to residents. The following information relates to the address referenced above:

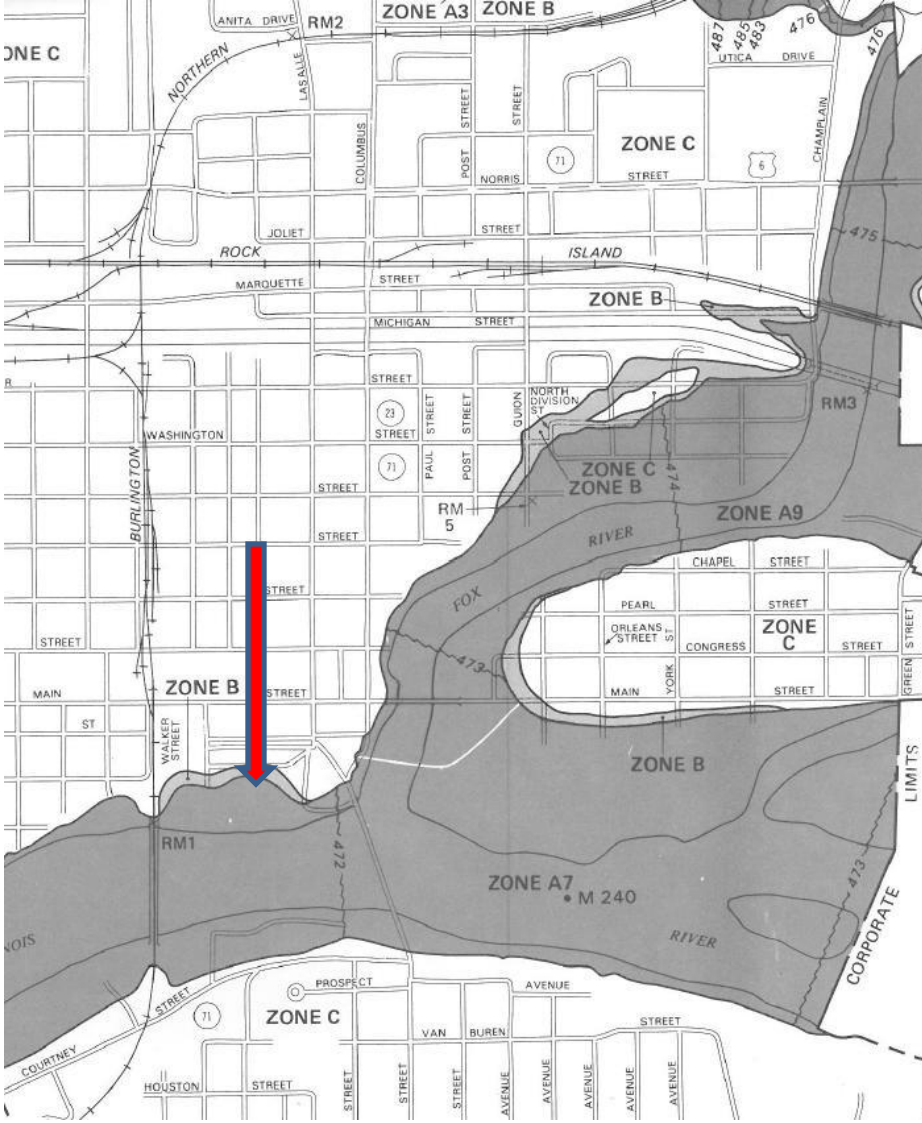
Community Number:	170405
Parcel Zone Information:	AE
Fair Market Value	\$3,191,364
Flood Damage, 2008	\$1,752,270
Total Damages	\$1,752,270
Percent Damaged	54.9%
Ordinance Requirement:	Mitigation (elevation or removal)

The determination is that this structure is declared **Substantially Damaged** and must be brought into compliance with the City of Ottawa's Floodplain Ordinance prior to repair and reoccupation. For this structure to be in compliance with the ordinance, the structure must be elevated, moved outside the floodplain, floodproofed or demolished.

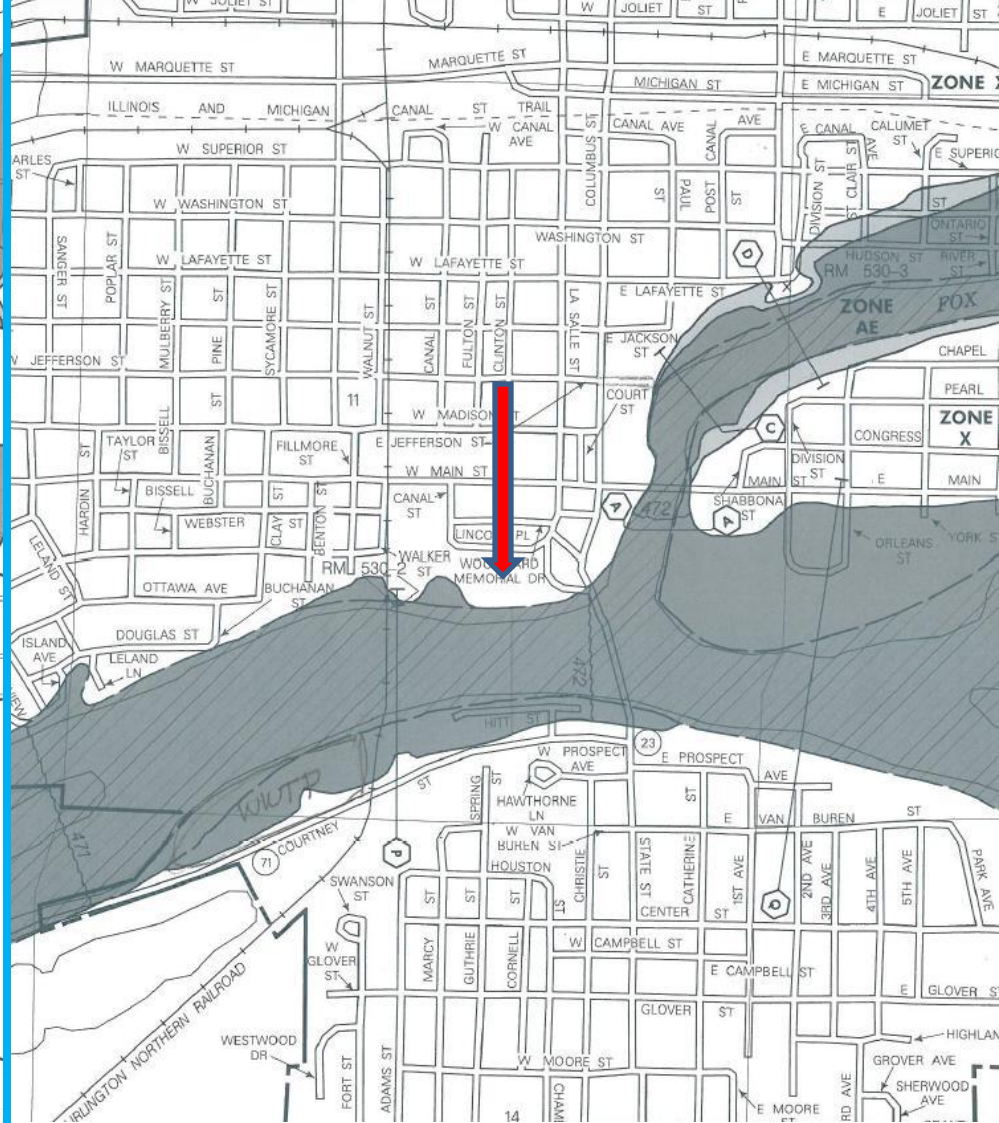
Building inspections, Building Permits, and an **Elevation Certificate** will be required prior to the issuance of a *Certificate of Occupancy*. This structure may **NOT** be occupied until these corrections are made. Please contact this office at your earliest convenience to make an appointment with me to discuss your upcoming project. If you have any additional questions, you may feel free to call me at 815-433-0161 ext. 19.

Sincerely,

Michael J. Sutfin  
Building & Zoning Official



**1985 FIRM**



**2001 FIRM**



# 1997 Site Investigation Report

Sanborn Maps from 1998 shows evidence of Manufactured Gas Plant Site still in place.

1999 Northern Illinois Gas remediates contaminated site.

A running track is built over fill.

Because property is in floodplain (1985 FIRM) the “as built” drawings would have been submitted to USACE and IDNR.

The new topographic maps show the track elevation at 474’ and 475’



Central Park  
321 West Main Street  
Cape Girardeur, Illinois

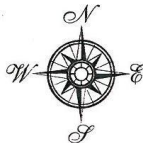
Central  
School

1998

HIG Project Number: MAJ-3380



Client Project Number: 48569-A02D

Approximate Scale: 1:6000 (1"=500')



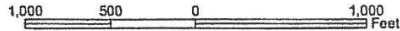


Legend

-  1% annual chance (100-Year) Floodplain
-  1% annual chance (100-Year) Floodway
- 0.2% annual chance (500-Year) Floodplain



APPROXIMATE SCALE IN FEET



NATIONAL FLOOD INSURANCE PROGRAM

**FIRM**  
FLOOD INSURANCE RATE MAP  
LA SALLE COUNTY,  
ILLINOIS  
AND INCORPORATED AREAS

**PANEL 530 OF 495**  
(SEE MAP INDEX FOR PANELS NOT PRINTED)

CONTAINS:

COMMUNITY	NUMBER	PANEL	SUFFIX
LA SALLE COUNTY	170400	0530	E
OTTAWA CITY OF	170405	0530	E

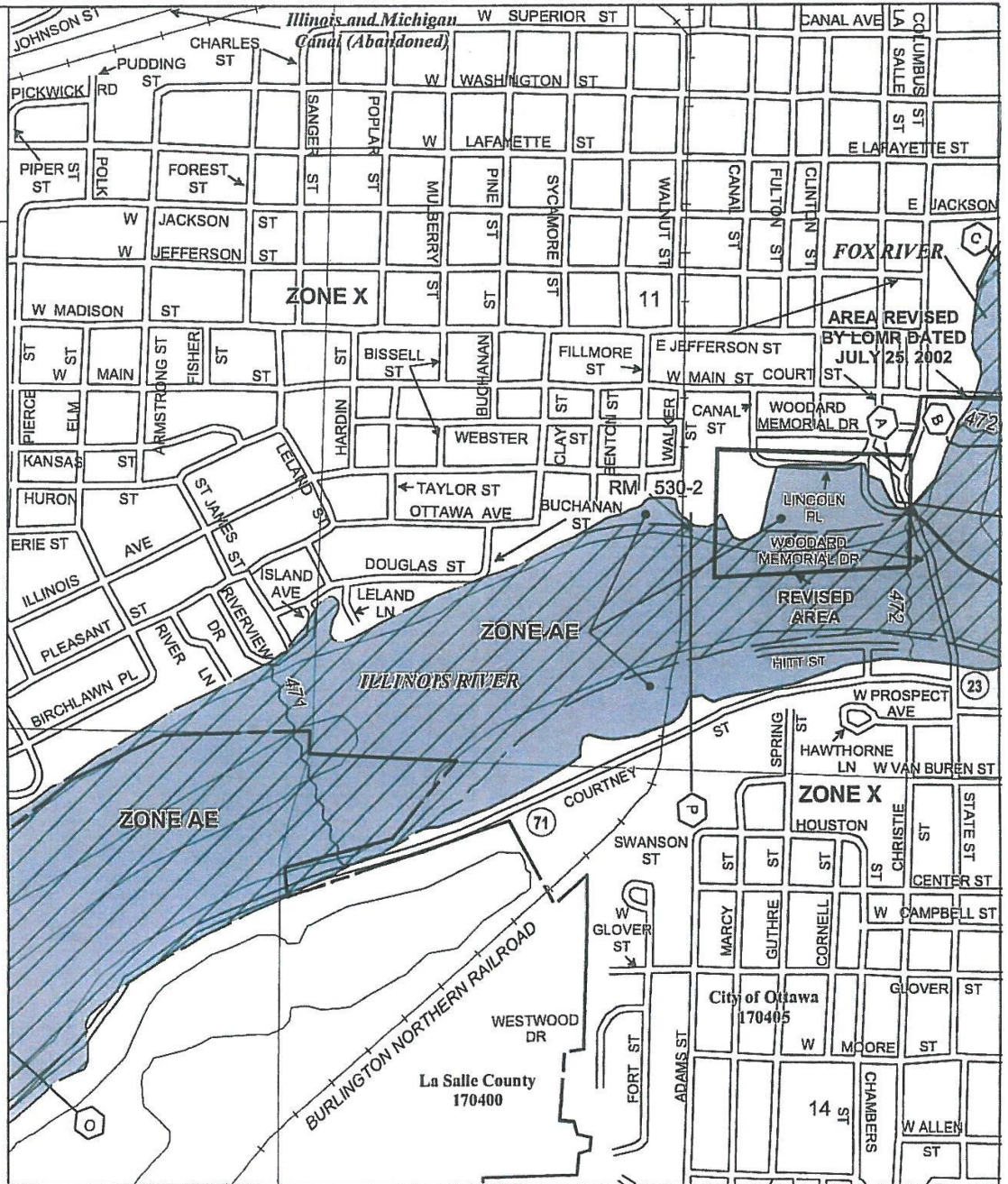
**REVISED TO  
REFLECT LOMR  
EFFECTIVE: March 10, 2009**

MAP NUMBER  
17099c0530 E

EFFECTIVE DATE:  
SEPTEMBER 7, 2001



Federal Emergency Management Agency



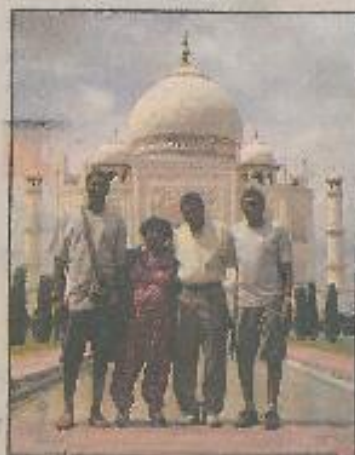
WEDNESDAY

March 18, 2009

FORECAST — A2

56 34  
HIGH LOW  
HIGH LOW

YOUR PHOTOS

FAMOUS  
PLACES

We asked for readers' pictures of themselves at famous places. Darshan Sahota submitted this photo of him, his wife Shweta, and sons Davinder and Ravinder in front of the the Taj Mahal at Agra in India. Email photos to [newsroom@mywebtimes.com](mailto:newsroom@mywebtimes.com) and be sure to include the names and hometowns of everyone pictured.

# FEMA rejects OES funding request

## 'Shocking news' forces board to find alternate means to deal with Central School building

MELISSA GARZANELLI

MELISSA GARZANELLI  
815-131-1049

A new building to replace Central School is no longer something the Federal Emergency Management Agency would be willing to help pay for.

The Ottawa Elementary School Board discussed this development during its meeting Tuesday. FEMA's declaration effectively eliminates the option of the district building a new school without finding another means of funding.

"This was a tremendous setback," said board President Ron Henson. "This was a big change in attitude (from FEMA) that was pretty devastating to our district. It will really change the course of direction of our funding."

Superintendent Craig Duster said for the past seven months, the district had been led to believe FEMA funding could be used to pay for a new building, provided it was determined the existing building was in the flood plain and under the city's flood plain ordinance.

However, FEMA officials, Duster said, told the school district and the city they had mispoke previously. FEMA will pay for 75 percent of the cost of the students to temporarily relocate into the Wal-Mart building, the costs to repair Central and the costs to lift it out of the flood

plain, but it will not allow those funds to be used for a new facility.

"This was shocking news," Duster said.

FEMA previously stated it will not pay for soil remediation at the site after contaminants were found in soil borings. FEMA also was not sure how much it would cover to bring the school up to code. If the building is raised above the flood plain, it must be brought up to code under city ordinances, which could cost around \$5 million, said Duster.

Duster said he was concerned that even if the building itself was no longer in a flood plain, school would still need to be covered during flood conditions for student safety, just as Ottawa Township High School does.

With FEMA no longer supporting a new facility, the board began to discuss other options.

U.S. Rep. Debbie Halverson, D-Crete, has placed an appropriation request at the committee level in Congress to find \$22 million in funding for a new school. However, competition for these funds is steep and the likelihood of receiving all the dollars is slim.

Duster also told the board that state Rep. Frank Martino, R-Spring Valley, has offered to add an amendment to a bill being prepared in the House that would allow the district to increase its debt limitation above its current level of \$1.8 million.

Under the amendment, the district could bond up to \$26 million in building bonds for a repayment period of up to 25 years. The bonding could be done without voter approval, due to the urgency of the situation. The funds could only be used for Central — for a new facility, land and demolition of the old building.

Duster asked the board whether it would like to pursue this amendment, which would appear

before the House on Wednesday. The concept drew fire from some board members.

"It is unfair to our taxpayers," Frank Polancic said of the amendment, and the idea of a tax increase without voter approval. "It's almost undemocratic."

Board member Tom Thrush agreed. However, board members Maribeth Manigold, Steve Onolecki and Kelly Davis said the amendment would only be a last resort in the event that all other funding options failed. They all said they would only wish to move ahead with bonding if the community supported it, but the amendment also allowed for greater bonding capacity — something that may not be available again.

"It's just an option," said Manigold. "We can still talk to the community."

Polancic said the district will have to build within the \$28 million limit if it is unable to secure an increase to its bonding limit. Duster has estimated the cost of a new building between \$20 and \$24 million.

Henson said the decision whether or not to pursue the amendment must have board approval. Since the matter was not on the agenda, he called for a special meeting within the next week or week and a half to take the matter to a vote.

Manigold questioned whether the amendment option would still be available then. Duster thought the option could still be open up until when the bill lands on the governor's desk.

In the meantime, the district will be making plans to transfer working cash funds into the operations fund in order to pay for the initial costs of relocating into Wal-Mart next school year. The district will pay for the work up front, with FEMA covering 75 percent through reimbursements.

CHIPPER WORK

# Cost Estimating Format (CEF)

Qty	CSI Number	Description	Crew	Daily Output	Labor Hours	Unit	Bare Mat.	Bare Labor	Bare Equip.	Total	Total Incl OAP	Zip Code Prefix	Typ	Release
1,192.000	01542 370 0800	Scaffolding, steel tubular, regular, labor only to erect & dismantle, building interior, floor area, 6'-4" x 5' frames, up to 30' high, excl. planks				C.C.F.	0.00	8,999.60	0.00	8,999.60	13,886.80	613	Union	2009 Qtr 2
1,192.000	01542 370 0908	Scaffolding, steel tubular, regular, rent/month only for complete system for interior spaces, 6'-4" x 5' frames, excl. planks				C.C.F.	3,636.00	0.00	0.00	3,636.00	3,983.20	613	Union	2009 Qtr 2
360.000	01542 370 5700	Scaffolding, planks, labor only to install & remove, 2"x10"x16", up to 50' high				Ea.	0.00	5,477.50	0.00	5,477.50	8,400.00	613	Union	2009 Qtr 2
0.000	02411 617 0010	BUILDING DEMOLITION FOOTINGS AND FOUNDATIONS, excludes disposal costs and dump fees					0.00	0.00	0.00	0.00	0.00	613	Union	2009 Qtr 2
20.000	02411 617 4250	Slab, footings and foundations demolition, add for disposal, up to 5 miles, excludes disposal costs and dump fees	B9	226	0.198	C.Y.	0.00	71.20	165.00	236.20	290.00	613	Union	2009 Qtr 2
0.000	02411 916 0010	Selective demolition, cutout					0.00	0.00	0.00	0.00	0.00	613	Union	2009 Qtr 2
280.000	02411 916 0050	Selective demolition, cutout, concrete elevated slab, light reinforcing, over 6' C.F., excludes loading and disposal	B9	75	0.533	C.F.	0.00	4,438.00	672.00	5,110.00	7,560.00	613	Union	2009 Qtr 2
280.000	02411 916 1450	Selective demolition, cutout, concrete, walls, bar reinforced, 6-12' C.F., excludes loading and disposal	B9	70	0.571	C.F.	0.00	4,760.00	722.40	5,482.40	8,260.00	613	Union	2009 Qtr 2
1,290.000	02821 930 1110	Disposal of contaminated soil to landfill, minimum				C.Y.	0.00	0.00	0.00	170,280.00	188,340.00	613	Union	2009 Qtr 2
75.000	02812 010 1120	Hazardous waste cleanup/pickup/disposal, solid/pickup, bulk material, minimum				Ton	0.00	0.00	0.00	13,725.00	15,075.00	613	Union	2009 Qtr 2
300.000	02812 010 1200	Hazardous waste cleanup/pickup/disposal, transportation to disposal site, truckload = 80 drums or 25 C.Y. or 18 tons, minimum				Mile	0.00	0.00	0.00	1,131.00	1,242.00	613	Union	2009 Qtr 2
48.000	02821 341 0410	Asbestos Abatement Equip. & Supplies, Buy, personal respirators, negative pressure, 1/2 face, dual operation, min				Ea.	1,104.00	0.00	0.00	1,104.00	1,200.00	613	Union	2009 Qtr 2
16.000	02821 341 1600	Asbestos Abatement Equip. & Supplies, Buy, shower unit, incl. pump & filters				Ea.	15,440.00	0.00	0.00	15,440.00	17,200.00	613	Union	2009 Qtr 2
456.000	02821 341 2000	Asbestos Abatement Equipment, worker protection, whole body, foot, head cover & gloves, plastic				Ea.	2,781.60	0.00	0.00	2,781.60	3,055.20	613	Union	2009 Qtr 2
300.000	02821 341 6000	Asbestos Abatement Equipment, disposable polyethylene bags, 6 mil, 3 CF				Ea.	351.00	0.00	0.00	351.00	386.10	613	Union	2009 Qtr 1
1,000.000	02821 341 6000	Asbestos Abatement Equipment, disposable polyethylene bags, 6 mil, 3 CF				Ea.	1,110.00	0.00	0.00	1,110.00	1,220.00	613	Union	2009 Qtr 2
30.000	02821 341 6300	Asbestos Abatement Equipment, disposable fiber drums, 3 CF				Ea.	339.00	0.00	0.00	339.00	372.90	613	Union	2009 Qtr 1
2,000.000	02821 341 6300	Asbestos Abatement Equipment, disposable fiber drums, 3 CF				Ea.	21,500.00	0.00	0.00	21,500.00	23,700.00	613	Union	2009 Qtr 2
3,000.000	02821 341 6400	Asbestos Abatement Equipment, pressure sensitive caution labels, 3' x 5'				Ea.	3,210.00	0.00	0.00	3,210.00	3,510.00	613	Union	2009 Qtr 2
30.000	02821 341 6400	Asbestos Abatement Equipment, pressure sensitive caution labels, 11" x 17"				Ea.	169.00	0.00	0.00	169.00	183.90	613	Union	2009 Qtr 2
11.000	02821 341 6500	Asbestos Abatement Equipment, negative air machine, 1800 CFM				Ea.	7,590.00	0.00	0.00	7,590.00	8,395.00	613	Union	2009 Qtr 2



At this point the School District gave up and the board told the superintendent to focus on upping the debt limit and bond for funding and forget FEMA entirely.

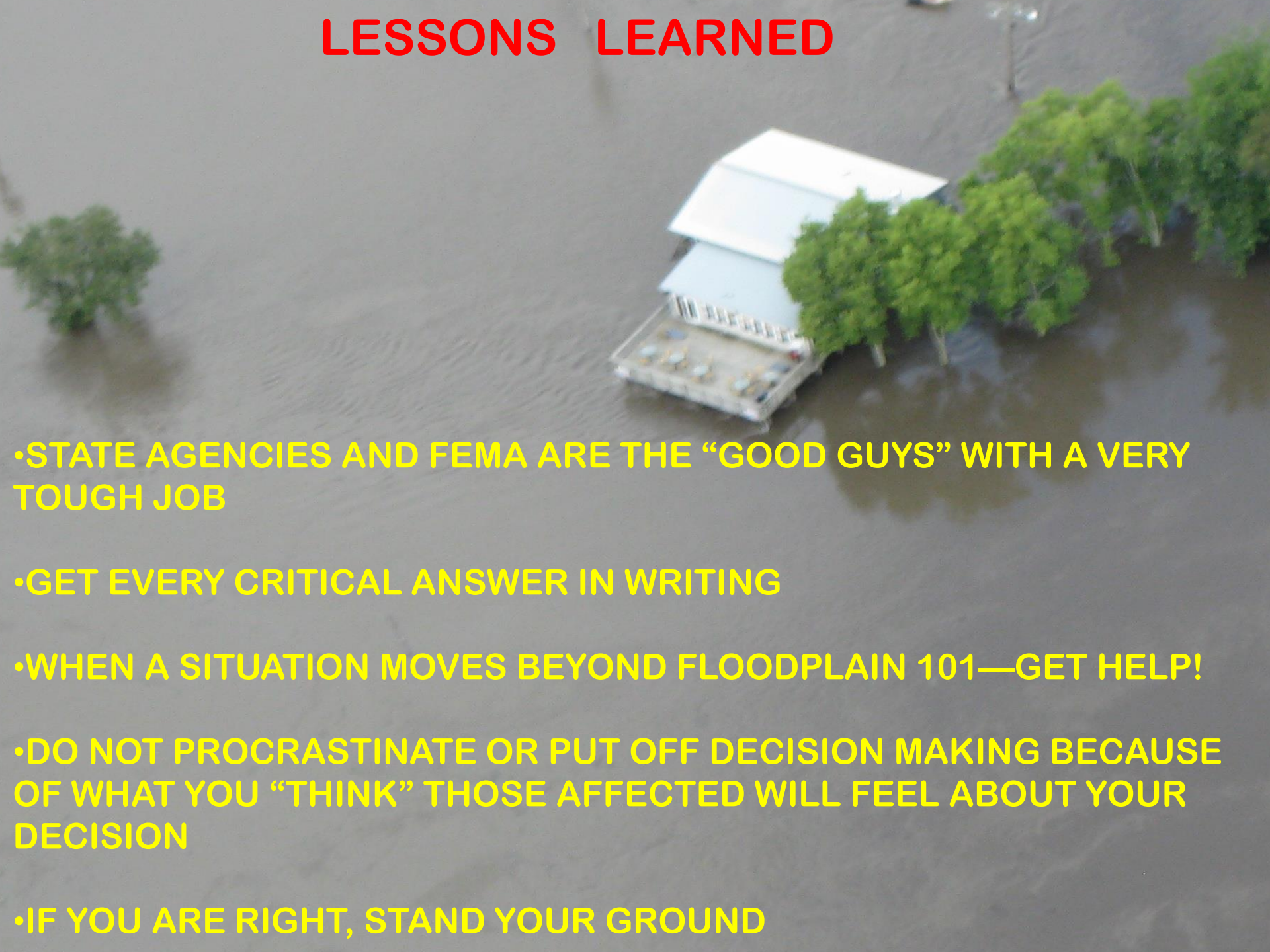
March 24, 2009 FEMA agrees school is in floodplain but rejects “substantial damage”

The City of Ottawa convinced the board to hire a professional advocacy group and agreed to share the cost. James Lee Witt Associates was chosen and hired in April.

A **CEF** (Cost Estimating Format) was prepared by the architect and Witt and submitted with three separate appeals.

After a lengthy appeal of damage, the appraisal and cost of repairs FEMA awards School District 12.75 million towards an “improved project” in August 2009. New school was located outside the floodplain and opened in Spring of 2012.

# LESSONS LEARNED

An aerial photograph showing a large, multi-story building with a white roof and a concrete base, partially submerged in dark, murky floodwater. Several green trees are also partially submerged in the water. The scene illustrates the impact of flooding on infrastructure.

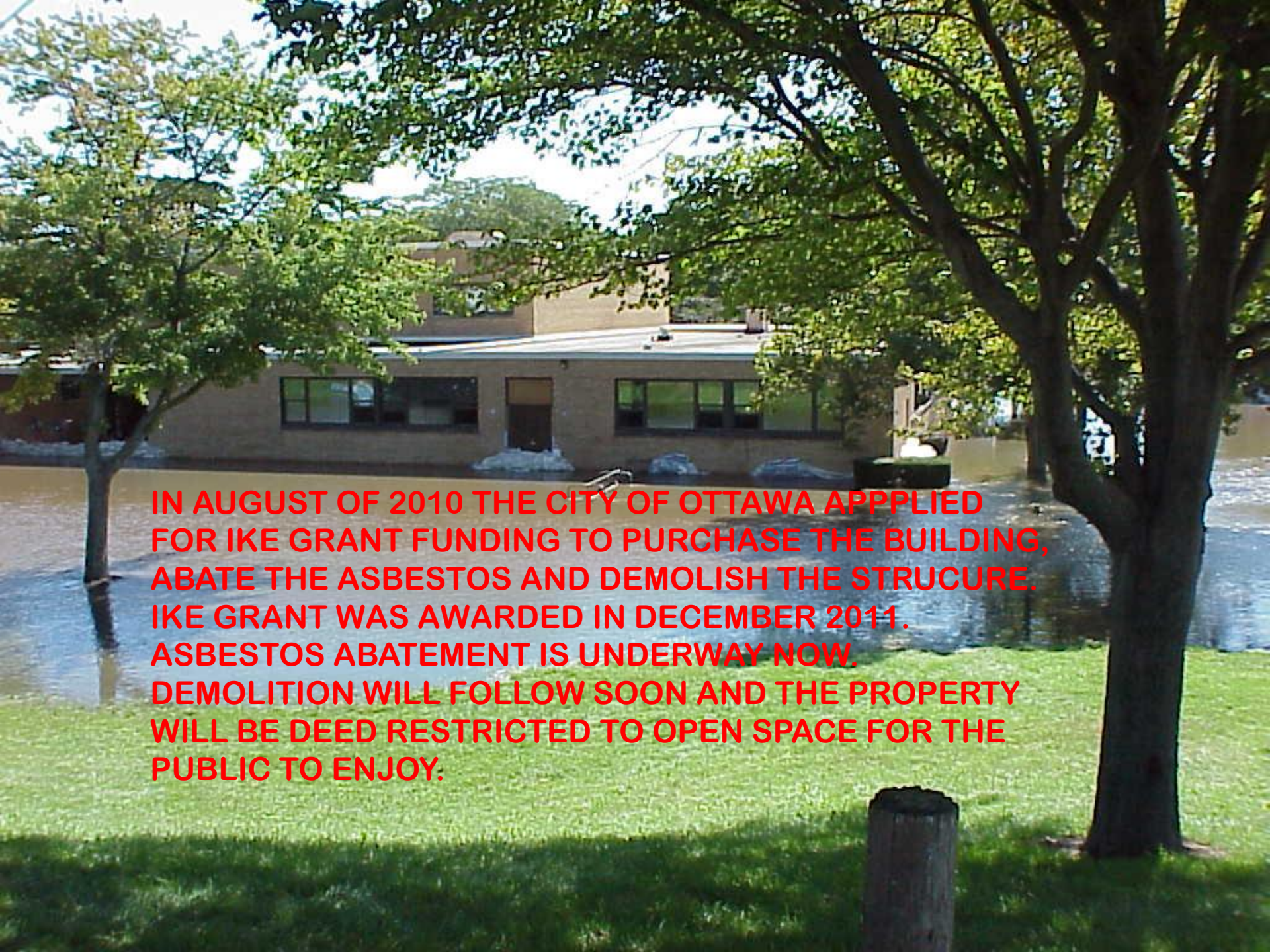
- STATE AGENCIES AND FEMA ARE THE “GOOD GUYS” WITH A VERY TOUGH JOB
- GET EVERY CRITICAL ANSWER IN WRITING
- WHEN A SITUATION MOVES BEYOND FLOODPLAIN 101—GET HELP!
- DO NOT PROCRASTINATE OR PUT OFF DECISION MAKING BECAUSE OF WHAT YOU “THINK” THOSE AFFECTED WILL FEEL ABOUT YOUR DECISION
- IF YOU ARE RIGHT, STAND YOUR GROUND

**Subject:** Central School

Hey Mike,

I just told me you called about Central School. You may want to stop the bulldozers. There are a couple "hitches":

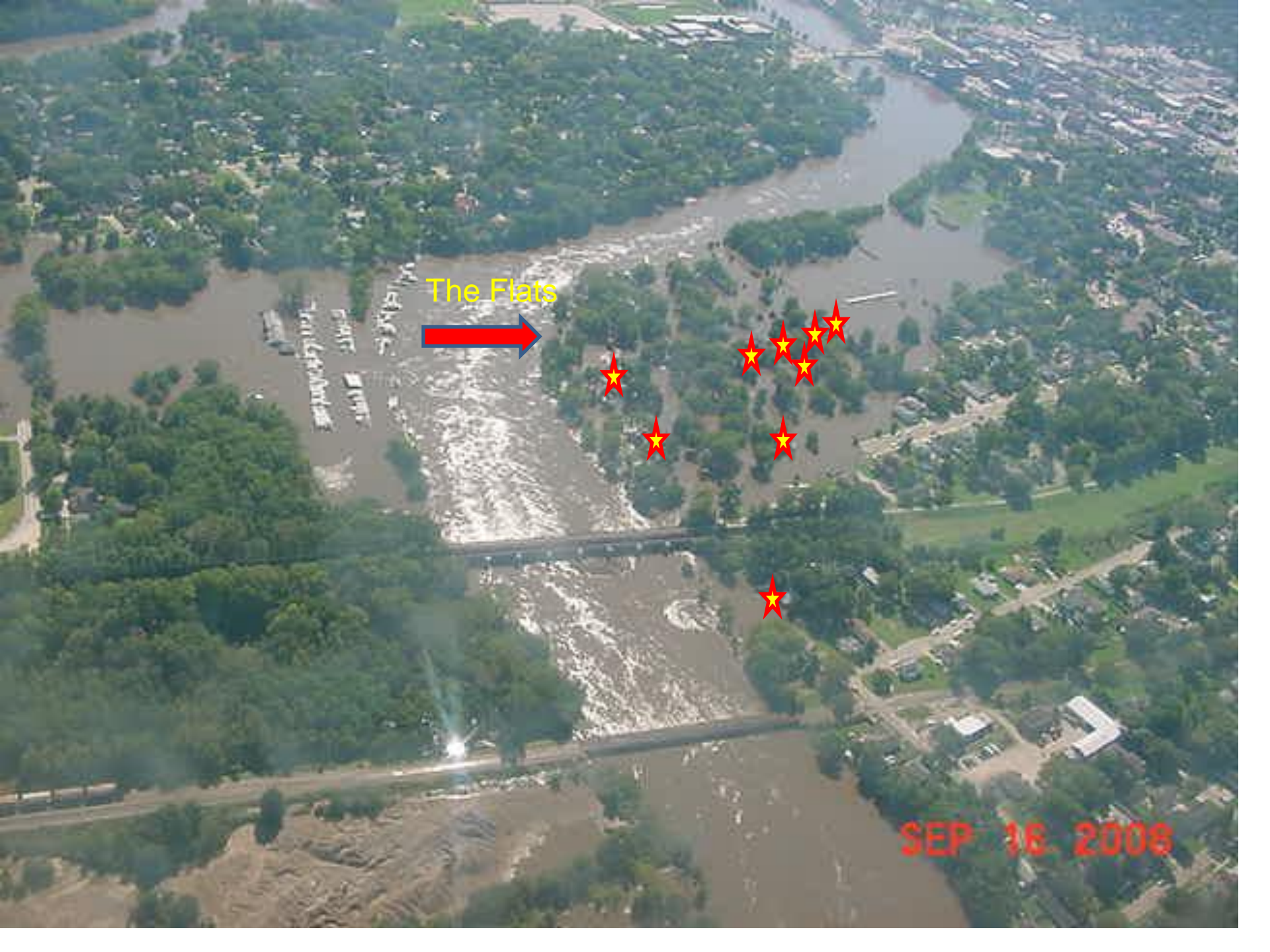
1. Our permit engineers are going to need a full hydraulic analysis of the Illinois River before they can approve the project.
2. EPA needs a sign affidavit that the asbestos-laden fill is going to an approved site.
3. IDNR found a Green Spotted Salamander behind the playground. They want to do a full environmental.
4. IHPA found two flint chips next to the parking lot. They want to do a full archeological assessment
5. FEMA is questioning the appraisal. However, with the new NFIP regulations, they may have to wait until the next Congressional approval of the program. Congress will meet again sometime after the elections. It could be several more months...
6. Of course, by the time this happens, our permit will expire and you will need to resubmit.



**IN AUGUST OF 2010 THE CITY OF OTTAWA APPLIED FOR IKE GRANT FUNDING TO PURCHASE THE BUILDING, ABATE THE ASBESTOS AND DEMOLISH THE STRUCTURE. IKE GRANT WAS AWARDED IN DECEMBER 2011. ASBESTOS ABATEMENT IS UNDERWAY NOW. DEMOLITION WILL FOLLOW SOON AND THE PROPERTY WILL BE DEED RESTRICTED TO OPEN SPACE FOR THE PUBLIC TO ENJOY.**



**The “Flats”– a 15 year commitment towards mitigation.**



The Flats



SEP 16 2006

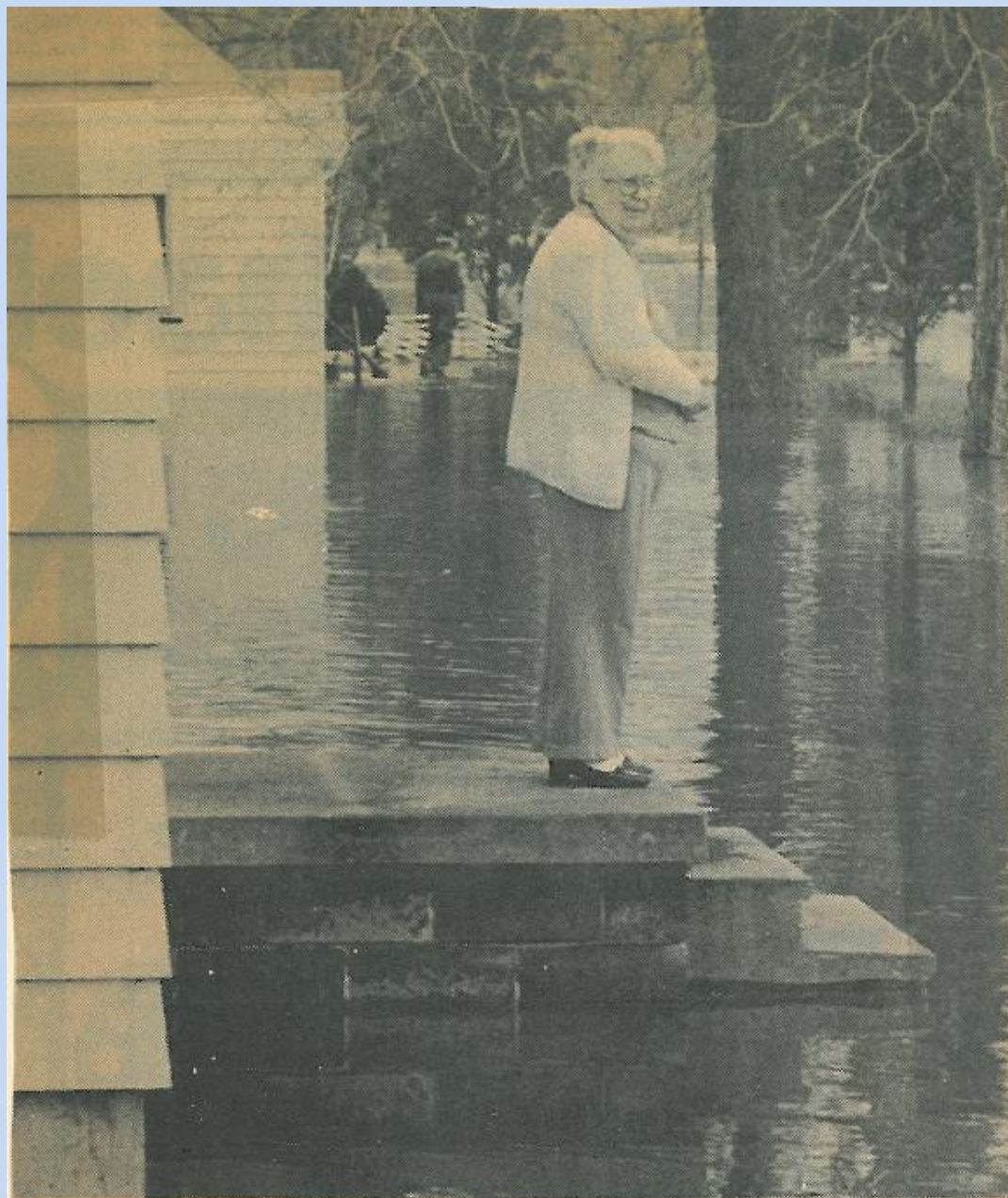


December 1982

## *Overview*

The flooding conditions that plagued Ottawa throughout the weekend, with the rising of the Fox and Illinois rivers, could be typified by this shot of the

area known as The Flats, near the bend in the Fox River. The Marquette High School football field is in the top center. (Daily Times photo)



## *Marooned*

Residents on St. George Street had this view Saturday, looking out on water, water, everywhere. (Daily Times photo)





***Boating along***

A rowboat had to be used Saturday to get to a residence on St. George Street in Ottawa. (Daily Times photo)

# The Daily Times

OTTAWA, ILLINOIS

AUGUST 18, 1997 Vol. 153, No. 193

50 CENTS

**TODAY'S TIMES**

**To park or not to park:  
Shakespeare in the lot**

NEW YORK (AP) — Broadway it's not. "Shakespeare in the Parking Lot" is theater for the masses, and then some. Actors compete with daily garbage trucks, an occasional drunk, sniffing dogs, car alarms and the like.

The 3-year-old summer festival of Shakespearean plays performs for free in a municipal parking lot, doing the Bard's "Macbeth," "A Midsummer's Night Dream," "The



Tempest" and more.

It has its upside, said Bob D'Haene, a wiry actor who plays Macbeth.

In one recent play, teen-age boys taunted performers with howls and laughter during "Hamlet." About halfway through, they became quieter. The next night they returned and sat in a back row, silent and watching.

"You could just tell, they were totally, totally getting everything that we're doing and enjoying it and having a great time," D'Haene said.

**OPINION**

**Never a dull moment  
on television talk shows**

Columnist Dave Barry recently took to the TV world while promoting his new book. "You go on whatever show they tell you to go on, in hopes that they'll



## The FLOODS

JULY 1996 & FEBRUARY 1997

**'We just hope it doesn't happen again'**

By **JANET LUNDQUIST**  
Staff Writer

By looking at the dollars required to repair damage from the July 1996 and February 1997 floods, it appears the winter flood was worse.

La Salle County spent between \$30,000 and \$35,000 to repair shoulder damage on county roads and clean up debris stuck under bridges from flooding last July, says County Engineer Bill Keith. It spent about \$70,000 to pull itself back together after the February flood.

County roads and shoulders suffered more damage in the winter because the ground was frozen, he said.

Serena Township Road Commissioner Ron Rosengren said his area did not have any problems last July. But he'd never seen the

■ **CONNIE BENNETT** (photo at left) of Sheridan, was one of many La Salle County residents who found their world floating away last summer. For many, recovery is still ongoing more than a year later. (Photo by Tom Sistak) **More photos on Page 7.**

it floods — and the city has done nothing to help.

The committee will start with a survey of damage analysis on homes affected by July and February flooding, Keene said. The city has not yet estimated how home damages.

"We want to lessen the impact of floods coming in the future," Keene said. "If you sit back and do nothing, nothing will happen. I'm not sure what all will be accomplished (by the committee), but I know at least something will happen."

Two of Ottawa's schools sustained

## What is worse than flood with 1-2 punch?

By **PAT HARRISON**  
City Editor

Watermarks

# Wants money spent for dike

To the editor:

Chicago is called the city that works. Ottawa may be called the city that spans rivers. What will the plaque read on the new crossing? Dedicated to those trapped on an "Island" in December 1982 during THE flood. Ottawa needs a new bridge as much as it needs an Earthquake. NO!

In the area of the Flats the victims of the flood suffered more than a little inconvenience of being "trapped" for a short while. Many of us in the flats will not return home to stay for over a week. People on the "Island" could stay home during and after the crisis.

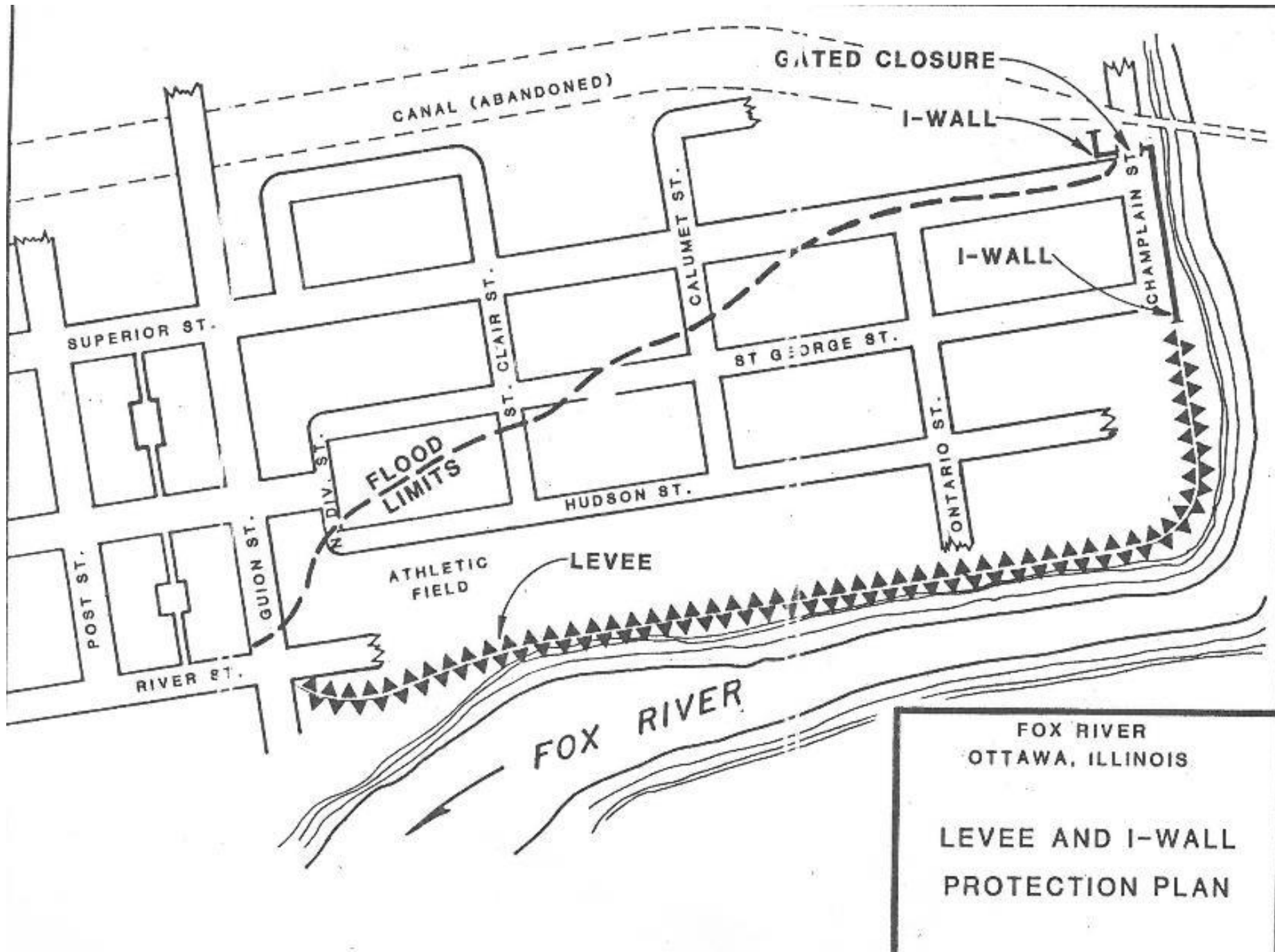
Throughout the flood, people on the Eastside had power, heat, running water and dry floors. We "Little people" in the flats had none there and

will still be without next week. The vast majority of the Eastsiders will have a happy Christmas and New Years. We in the flats will still be recovering.

In light of all this the present city government is pushing for a new bridge?

This is senseless. If money is to be spent on major construction, build a dike along the Fox River and prevent the loss of property and the misery of being evacuated every year from this low lying area. A dike would be more useful and beneficial during years to come.

Matt Ruger  
801 E. Superior  
Ottawa





DEPARTMENT OF THE ARMY  
ROCK ISLAND DISTRICT, CORPS OF ENGINEERS  
CLOCK TOWER BUILDING - P.O. BOX 2004  
ROCK ISLAND, ILLINOIS 61204-2004

REPLY TO  
ATTENTION OF:

Planning Division

84 SEP 1981

Mr. William C. Krause  
City Engineer  
301 West Madison Street  
Ottawa, Illinois 61350

Dear Mr. Krause:

We have completed a preliminary evaluation of a levee and floodwall plan to reduce flood damages along the Fox River from Guion Street upstream to Superior Street. This plan is shown on the attached plate.

The preliminary analysis estimates that the levee and floodwall plan (100-year protection) would have a first cost of \$1,223,000, resulting in an average annual cost of \$116,700. The average annual benefits resulting from the plan are \$104,600, resulting in a benefit-to-cost of 0.9. This plan is not economically justified and would not permit us to proceed to the more detailed reconnaissance phase of study.

If the I-wall and gated closure across Champlain Street could be replaced with a levee, it should reduce the cost sufficiently to make the plan economically justified. Would the city support a plan that blocks off Champlain Street?

Any questions regarding the preliminary analysis can be directed to Mr. Richard Watson at 309/788-6361, Ext. 6341.

Sincerely,

  
Arthur J. Klingerman  
Chief, Planning Division

Enclosure



02/01/2013 17:01

45 867 Z

# Flood Protection vs. Abatement

- Cost to build levee 1984 dollars = \$1,223,000.
- Today's dollars = \$2,771,000
- Total losses (bldg. & content) \$1,350,914
- Total = \$4,121,914
- Does not include O&M
- Total dollars to buyout 74 buildings and clear the Flats = \$3,229,093
- Flood of 2008 would have overtopped the levee
- With 2011 FIRM'S, the levee would have been de-accredited

# DECISION TIME

- IS A PROPERTY “BUY OUT” APPROPRIATE?
- HAVE YOU BEEN DECLARED A FEDERAL DISASTER?
- 10%-15% OF DISASTER RELIEF \$ AVAILABLE THROUGH IEMA (HMGP)
- TALK WITH RON DAVIS (IEMA) AND PAUL OSMAN (OWR)
- BENEFIT COST= PROVE THAT THE PRESENT BUYOUT COST WILL BE LESS THAN LONG TERM LOSSES/GAINS
- EDUCATE THE PROPERTY OWNER, GENERATE INTEREST AND MOVE THEM TO ACTION





BUYOUT

Yellow is 100 year flood

BUYOUT

BUYOUT

BUYOUT

BUYOUT

BUYOUT

BUYOUT

BUYOUT

BUYOUT

# HAZARD MITIGATION GRANT PROGRAM

## HMGP

- Subgrant Project Application (40 pages)
  - Taxpayer ID Certification
  - Drug Free Workplace
  - Maintenance Agreement
  - Deed Restrictions (model)
  - HMGP Assistance Agreement (assures project will comply with State & Fed regulations.)
  - Narrative Description—be thorough
  - Public Involvement
  - INITIAL SUBGRANT APPLICATION FILED
- NOVEMBER 2008

## **HURRICANE IKE GRANT PROGRAM**

- Used for project matching funds—referred to as Property Buyout Program (PBP)
- Project location map, current FIRM, Tax Parcel map, Income Survey, USGS quad topo map, National Objective documents, applicant certifications, Council Resolution, Public Notifications, Disclosure Certifications, Urgent Need Resolution, Minority Benefit, Affirmative Housing Statement, Individual Property worksheets, Property Owner worksheets, Property Tenant Inventory, Damage History, Property Owner Questionnaire and Property Ownership Affidavit.
- INITIAL GRANT APPLICATION FILED AUGUST 2010



**FOX RIVER PARK SHELTER**



**FOX RIVER PARK WATER FEATURE**



**FOX RIVER PARK PLAYGROUND**

SUBSTANTIALLY DAMAGED 2008



# WHAT HAPPENS WHEN THE BFE IS RAISED?

- HIGH SCHOOL LEVEE LOSES ACREDITATION
- NEW PROPERTIES ADDED TO THE SFHA
- SOME PROPERTIES THAT ELEVATED ARE NO LONGER SAFE
- LIMITED CONTOUR INFORMATION PLACES HIGH & DRY PROPERTIES INSIDE THE SFHA
- SOME PROPERTY OWNERS NOW NEED FLOOD INSURANCE
- WWTP NOW AT RISK
- OPPORTUNITY TO “FIX” THINGS BEFORE FINAL MAPS





U.S. Department of Homeland  
Security

536 S. Clark St. 6<sup>th</sup> Floor  
Chicago, IL 60605

FEMA

June 16, 2009

Mr. George Shanley, President  
Board of Education  
Ottawa Township High School  
211 E. Main St.  
Ottawa, IL 61350

Dear Mr. Shanley:

This letter is in regard to the Ottawa High School Levee shown on LOMR 01-05-2931P for the City of Ottawa. As you may know, the Department of Homeland Security, Federal Emergency Management Agency (FEMA), is in the process of producing a countywide FIS report and Digital Flood Insurance Rate Map (DFIRM) for LaSalle County.

As part of FEMA's effort to produce the DFIRM, it was determined that the flood hazard information presented on LOMR 01-05-2931P is based, in some areas, on flood protection provided by the Ottawa High School Levee. Based on the information available and on the mapping standards of the National Flood Insurance Program (NFIP) at the time that the LOMR was performed, FEMA accredited the levee with providing protection from the flood that has a 1-percent-chance of being equaled or exceeded in any given year. The 1-percent-annual-chance flood also is referred to as the base flood.

The Ottawa High School Levee does not meet the requirements set forth in the Code of Federal Regulations, Title 44, Section 65.10 (44 CFR 65.10), which is required for the levee to be accredited as providing base flood protection. Therefore, the levee cannot be shown on the DFIRM as providing protection from the base flood.

The levee will be de-accredited on the DFIRM. A phone call was held with your staff on June 16, 2009 to inform you of the de-accreditation process. The area landward of the levee will be mapped as Special Flood Hazard Area (SFHA) as appropriate. Therefore, the mandatory flood insurance purchase requirements of the NFIP will apply to these areas when the DFIRM becomes effective. In addition, local floodplain management ordinances must be enforced in these areas. It is highly recommended that you consider this risk in your local emergency management plans, including creating evacuation plans for this area.

FEMA will issue Preliminary Maps when the de-accredited mapping is completed. At that time, FEMA will meet with you and the public regarding the revised maps. Following this meeting, a 90-day Appeal Period will be held. When all Appeals are resolved, FEMA will issue the Letter of Final Determination. Final DFIRMs will be distributed that will become effective 6 months after the date of the Letter of Final Determination.

We encourage you to inform property owners behind the levee of this change. FEMA has produced a variety of outreach materials which can be used to educate and inform the public about the risks associated with levees and how they can better protect themselves against those risks. These materials are

**JUNE 16, 2009  
FEMA INFORMS THE  
HIGH SCHOOL  
DISTRICT AND THE  
CITY THAT THE LEVEE  
WILL BE  
DE-ACCREDITED**



Levee



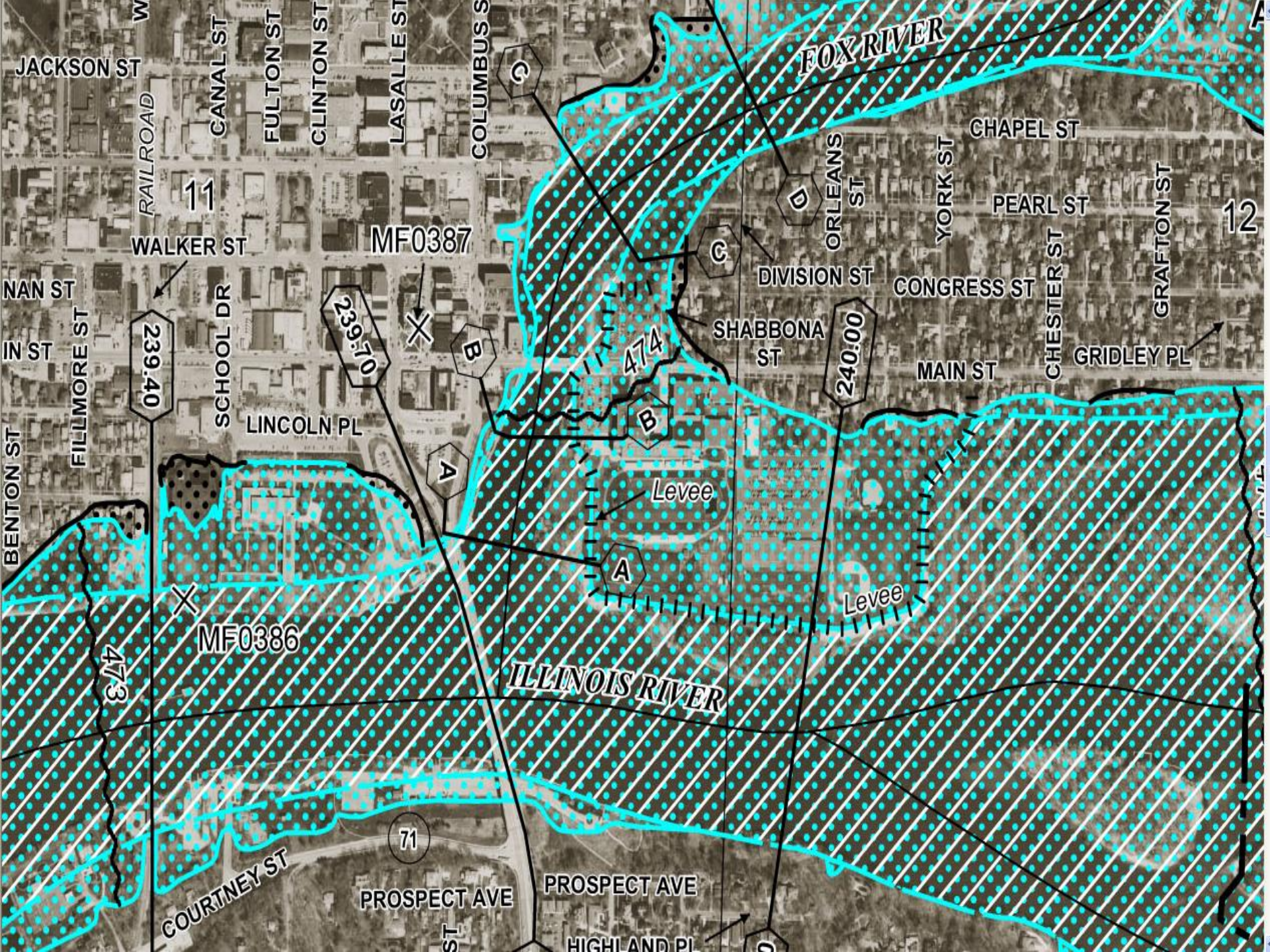
Flood  
Protection  
Wall



Fox River



SEP 16 2008



Reference Number	Mailing Name	Mailing Address	Mailing City	Zip Code	Site Address Number	Site Address Street
19-06-300-004	SPANBAUER, GREGORY / STEPHANIE	1420 AQUARIUS CIRCLE	OTTAWA, IL	61350	1420	Aquarius Cir.
18-14-103-002	HENRY, WILLIAM	1101 NORLEY AVE	JOLIET, IL	60435		
18-15-127-001	ST FRANCIS OF ASSISI CONG	820 SANGER ST	OTTAWA, IL	61350		
18-12-202-001	BROWN OIL COMPANY	PO BOX 761	OTTAWA, IL	61350		
19-18-100-001	WHITE OAK DEVELOPMENT INC	1799 N 2703RD RD	OTTAWA, IL	61350		
18-16-476-002	LIBBEY-OWENS FORD-COMPANY	811 MADISON AVE BOX 799	TOLEDO, OH	43695		
18-10-460-011	GRIEVES, JOHN L/ SUE L TTEE'S	1411 BIRCHLAWN	OTTAWA, IL	61350		Birchlawn Pl.
18-12-128-011	HANSON, MICHAEL P	1902 CHAMPLAIN ST	OTTAWA, IL	61350	1301	Champlain St.
18-12-128-012	FERGUSON, JACK/MARY	1303 CHAMPLAIN ST	OTTAWA, IL	61350	1303	Champlain St.
18-01-378-008	THOMPSON, ROBERT V	1400 CHAMPLAIN ST	OTTAWA, IL	61350	1400	Champlain St.
18-01-378-002	HUGHES, BRADLEY J	903 E NORRIS DR	OTTAWA, IL	61350		
18-01-477-008	L J REALTY, LLC	1304 STARFIRE DR	OTTAWA, IL	61350		
18-01-331-011	GATEWOOD, BRIAN	1610 CHAMPLAIN ST	OTTAWA, IL	61350	1610	Champlain St.
18-11-355-002	QUILLIN, MARGARET - DANIEL	106 DOUGLAS ST	OTTAWA, IL	61350	106	Douglas Pl.
18-01-301-009	ENGEL, DAVID R	414 PRAIRIE ST	OTTAWA, IL	61350	414	Prairie St.
18-11-453-001	HERMANN, RENEE	510 COURTNEY ST	OTTAWA, IL	61350	510	Courtney St.
18-01-453-001	STOKES, ROBERT C/ MARION TTEE	35 W 160 BUTTERFIELD RD	BATAVIA, IL	60510		
18-11-352-005	SCHMIDT, ERIKA L TRUSTEE	203 CLAY ST	OTTAWA, IL	61350-2703	203	Clay St.
18-01-477-007	L J REALTY, LLC	1304 STARFIRE DR	OTTAWA, IL	61350	1304	Starfire Dr.
18-01-378-001	HUGHES, BRADLEY J	903 E NORRIS DR	OTTAWA, IL	61350	903	E. Norris Dr.
18-01-378-005	DAVIS, HAROLD-THELMA	2705 MARA DR	OTTAWA, IL	61350		
18-01-331-006	MASINELLI, RICHARD &	1624 CHAMPLAIN ST	OTTAWA, IL	61350	1624	Champlain St.
18-01-301-008	DONOVAN, STEVEN/ SHANE	410 PRAIRIE ST	OTTAWA, IL	61350	410	Prairie St.
18-01-301-007	THOMPSON, LINDA L	324 PRAIRIE ST	OTTAWA, IL	61350	324	Prairie St.
18-01-301-006	SMITH, SANDRA K MONN	320 PRAIRIE ST	OTTAWA, IL	61350	320	Prairie St.
18-01-301-004	MORALES, KRISTI/THOMPSON, RYAN	316 1/2 PRAIRIE ST	OTTAWA, IL	61350	316Half	Prairie St.
18-01-326-006	BRIDGES, TAMMY	1935 PRATT LANE	OTTAWA, IL	61350	1925	Pratt Ln.

# EDUCATING THE PUBLIC

## Step 1

- Floodplain 101
- Insurance Requirements

## Step 2

- Elevation Certificates
- Letters of Map Change

## Step 3

- Identify the resources
- Move them to action

July 1, 2010

Dear Resident:

You are receiving this letter because your property is affected by the new Preliminary Digital Flood Insurance Rate Maps. Many property owners have already contacted the City of Ottawa regarding these changes. The Floodplain Management for the City of Ottawa and the Flood Commission are considering a strategy to clarify potential errors that may have been caused by poor contour information.

The City of Ottawa has already submitted maps changes to FEMA for the preliminary DFIRM's. Once FEMA formally responds to the City regarding these changes there will be 90 days in which to submit requests for map changes from the public.

We will have a public meeting on July 13, 2010 and July 14, 2010 at 5:00 p.m. in Council Chambers at City Hall. All residents who receive this letter are urged to attend. On July 13, we ask those residents along the Goose Creek and the Fox River to attend this session. On July 14, we ask all residents who live on the Illinois River to attend this session.

The strategy will be discussed in detail and representatives from our local land surveyors will be in attendance. Briefly stated, most properties that are affected will need to obtain an Elevation Certificate. This certificate can only be generated by a licensed land surveyor. The certificate is more costly if done individually, as opposed to groups of adjoining properties banning together with one land surveyor.

Please plan to attend this most important meeting as it will be the last one before map changes are submitted to FEMA. Of course if you have questions, please feel free to contact either Floodplain Manager for the City of Ottawa: Dave Noble, P.E., CFM, 815 433 0161 ex. 20 or Mike Sutfin, CFM, 815 433 0161 ex 19.

Sincerely,

Michael Sutfin, CFM  
Building & Zoning Official

Dave Noble, P.E., CFM  
City Engineer

“Wait just a minute—  
you changed the  
maps, you changed  
the Base Flood  
Elevation and now I  
have to purchase an  
Elevation Certificate  
and Flood  
Insurance?!!!”



## PUBLIC MEETING COMMENTS



<b>IMPORTANT:</b> In these spaces, copy the corresponding information from Section A.	Professional Company/SEA
Building Street Address (including Apt., Unit, Suite, and/or Bldg. No.) or P.O. Route and Box No. 420 EAST PROSPECT AVE.	County Number
City: OTTAWA State: IL ZIP Code: 61350	Company NAIS Number

**SECTION D - SURVEYOR, ENGINEER, OR ARCHITECT CERTIFICATION (CONTINUED)**

Copy both a and b of this Elevation Certificate for (1) community officials, (2) insurance agent/company, and (3) building owner.

Comments: IN 2011, LASALLE COUNTY, IL (AND THE CITY OF OTTAWA) WILL RECEIVE NEW DIGITAL FIRMS. THE BFE WILL INCREASE ON THESE NEW MAPS. THE LAG ON THIS LOMA IS HIGHER THAN THE NEW BFE. THE NEW BFE IS 473.8 NAVD88 AND THE LAG IS 533.46 NAVD88. THE NEW BFE WAS TAKEN FROM THE PRELIMINARY FIS DATED MARCH 10, 2010. THIS LOMA SHOULD BE REVALIDATED.

Signature: *[Signature]* Date: 6-20-2011  Check here if attachments

**SECTION E - BUILDING ELEVATION INFORMATION (SURVEY NOT REQUIRED) FOR ZONE AO AND ZONE A (WITHOUT BFE)**

- For Zones AO and A (without BFE), complete items E1-E5. If the Certificate is intended to support a LOMA or LOMR-F request, complete Sections A, D, and C. For items E1-E4, use natural grade, if available. Check the measurement used. In plants (circle only), enter meters.
- E1. Provide elevation information for the following and check the appropriate boxes to show whether the elevation is above or below the highest adjacent grade (HAG) and the lowest adjacent grade (LAG).
- a) Top of bottom floor (including basement, crawlspace, or enclosure) is \_\_\_\_\_  feet  meters  above or  below the LAG.
  - b) Top of bottom floor (including basement, crawlspace, or enclosure) is \_\_\_\_\_  feet  meters  above or  below the LAG.
- E2. For Building Diagrams B-3 with permanent flood openings (provide in Section A, items 3 and/or B (see pages 3-8 of instructions), the next higher four elevations (E2.1 in the diagrams) of the building is \_\_\_\_\_  feet  meters  above or  below the HAG.
- E3. Attached garage (top of slab) is \_\_\_\_\_  feet  meters  above or  below the HAG.
- E4. Top of platform of machinery and/or equipment servicing the building is \_\_\_\_\_  feet  meters  above or  below the HAG.
- E5. Zone AO only. If the flood depth number is available, is the top of the bottom floor elevated in accordance with the community's floodplain management ordinance?  Yes  No  Unknown. The local official must certify the information in Section G.

**SECTION F - PROPERTY OWNER (OR OWNER'S REPRESENTATIVE) CERTIFICATION**

The property owner or owner's authorized representative who completes Sections A, B, and E for Zone A (without FEMA-issued or community-issued BFE) or Zone AO must sign here. The statements in Sections A, B, and E are correct to the best of my knowledge.

Property Owner or Owner's Authorized Representative's Name \_\_\_\_\_

Address \_\_\_\_\_ City \_\_\_\_\_ State \_\_\_\_\_ ZIP Code \_\_\_\_\_

Signature \_\_\_\_\_ Title \_\_\_\_\_ Telephone \_\_\_\_\_

Comments \_\_\_\_\_  Check here if attachments

**SECTION G - COMMUNITY INFORMATION (OPTIONAL)**

The local official who is authorized by law or ordinance to administer the community's floodplain management ordinance can complete Sections A, B, C (or E), and G of this Elevation Certificate. Complete the applicable item(s) and sign below. Check the measurement used in items G8 and G9.

G1.  The information in Section C was taken from other documentation that has been signed and sealed by a licensed surveyor, engineer, or architect who is authorized by law to certify elevation information. (Indicate the source and date of the elevation data in the Comments area below.)

G2.  A community official completed Section E for a building located in Zone A (without a FEMA-issued or community-issued BFE) or Zone AO.

G3.  The following information (Items G4-G9) is provided for community floodplain management purposes.

G4. Permit Number _____	G5. Date Permit Issued _____	G6. Date Certificate Of Compliance/Occupancy Issued _____
-------------------------	------------------------------	---

G7. This permit has been issued for:  New Construction  Substantial Increase in Use

G8. Elevation of as-built lowest floor (including basement) of the building: \_\_\_\_\_  feet  meters (PR) Datum \_\_\_\_\_

G9. BFE or (in Zone AO) depth of flooding at the building site: \_\_\_\_\_  feet  meters (PR) Datum \_\_\_\_\_

G10. Community's design flood elevation: \_\_\_\_\_  feet  meters (PR) Datum \_\_\_\_\_

Local Official's Name \_\_\_\_\_ Title \_\_\_\_\_

Community Name \_\_\_\_\_ Telephone \_\_\_\_\_

Signature \_\_\_\_\_ Date \_\_\_\_\_

Comments \_\_\_\_\_

Check here if attachments

“In 2011, LaSalle County, IL (and the City of Ottawa) will receive new Digital FIRMS. The BFE will increase on those new maps. The LAG on this LOMA is higher than the new BFE. The new BFE is 473.8 NAVD88 and the LAG is 533.46 NAVD88. The new BFE was taken from the Preliminary FIS dated March 10, 2010. This LOMA should be revalidated.”



# Final Summary of Map Actions

These LOMC's (over 100) will be revalidated free of charge 1 day after the revised FIRM becomes effective through a single revalidation letter that reaffirms the validity of the previous LOMC's

SOMA-2

## FINAL SUMMARY OF MAP ACTIONS

Community: OTTAWA, CITY OF

Community No: 170405

LOMC	Case No.	Date Issued	Project Identifier	Old Panel	New Panel
LOMR-FW	11-05-0176A	11/23/2010	A PORTION OF LOT 18 - 308 PRINCE STREET	17099C0530E	17099C0530F
LOMA	11-05-0178A	11/22/2010	LOT 1, ERUS-18 SUBDIVISION - 308 PRINCE STREET	17099C0530E	17099C0530F
LOMA	11-05-0179A	11/23/2010	A PORTION OF LOT 19 - 310 PRINCE STREET	17099C0530E	17099C0530F
LOMR-FW	11-05-0181A	11/23/2010	A PORTION OF LOT 19 - 310 PRINCE STREET	17099C0530E	17099C0530F
LOMA	12-05-7791A	12/08/2010	LOT 1, BLOCK 18 OF JANA LANE SUBDIVISION - 624 GEORGE STREET	17099C0530E	17099C0530F
LOMA	11-05-0330A	11/20/2010	LOT 3 & A PORTION OF LOT 7, BLOCK 4 GLENHASTING - 901 CLARE STREET	17099C0530E	17099C0530F
LOMR-FW	11-05-0331A	12/07/2010	LOT 10 & 11, BLOCK 3, JAMES SUBDIVISION - 1041 BLANCKENHOLE	17099C0530E	17099C0530F
LOMA	13-05-5258A		LOT 1 & 7, Block A, Block 1, East-Cote Subdivision - 1006 SHERBOURNE	17099C0530F	17099C0530F
LOMA	13-05-5482A		LOT 9, "Hatched" Subdivision - 1006 SHERBOURNE	17099C0530E	17099C0530F
LOMA	13-05-5725A		LOT 1, 2, 3, 4, 5, Block 16, Bayview Subdivision - 1021 NOTRE DAME	17099C0530E	17099C0530F
LOMA	13-05-5870A		LOT 1 OF 7, "Hatched" Subdivision - 111 LAUREL LANE	17099C0530F	17099C0530F
LOMA	13-05-6113A		LOT 1 & 2, "Hatched" Subdivision - 1006 SHERBOURNE	17099C0530E	17099C0530F
LOMA	10-05-6025A		LOT 1 & 2, 3, 4, 5, 6, 7, 8, 9, 10, 11, 12, 13, 14, 15, 16, 17, 18, 19, 20, 21, 22, 23, 24, 25, 26, 27, 28, 29, 30, 31, 32, 33, 34, 35, 36, 37, 38, 39, 40, 41, 42, 43, 44, 45, 46, 47, 48, 49, 50, 51, 52, 53, 54, 55, 56, 57, 58, 59, 60, 61, 62, 63, 64, 65, 66, 67, 68, 69, 70, 71, 72, 73, 74, 75, 76, 77, 78, 79, 80, 81, 82, 83, 84, 85, 86, 87, 88, 89, 90, 91, 92, 93, 94, 95, 96, 97, 98, 99, 100, 101, 102, 103, 104, 105, 106, 107, 108, 109, 110, 111, 112, 113, 114, 115, 116, 117, 118, 119, 120, 121, 122, 123, 124, 125, 126, 127, 128, 129, 130, 131, 132, 133, 134, 135, 136, 137, 138, 139, 140, 141, 142, 143, 144, 145, 146, 147, 148, 149, 150, 151, 152, 153, 154, 155, 156, 157, 158, 159, 160, 161, 162, 163, 164, 165, 166, 167, 168, 169, 170, 171, 172, 173, 174, 175, 176, 177, 178, 179, 180, 181, 182, 183, 184, 185, 186, 187, 188, 189, 190, 191, 192, 193, 194, 195, 196, 197, 198, 199, 200, 201, 202, 203, 204, 205, 206, 207, 208, 209, 210, 211, 212, 213, 214, 215, 216, 217, 218, 219, 220, 221, 222, 223, 224, 225, 226, 227, 228, 229, 230, 231, 232, 233, 234, 235, 236, 237, 238, 239, 240, 241, 242, 243, 244, 245, 246, 247, 248, 249, 250, 251, 252, 253, 254, 255, 256, 257, 258, 259, 260, 261, 262, 263, 264, 265, 266, 267, 268, 269, 270, 271, 272, 273, 274, 275, 276, 277, 278, 279, 280, 281, 282, 283, 284, 285, 286, 287, 288, 289, 290, 291, 292, 293, 294, 295, 296, 297, 298, 299, 300, 301, 302, 303, 304, 305, 306, 307, 308, 309, 310, 311, 312, 313, 314, 315, 316, 317, 318, 319, 320, 321, 322, 323, 324, 325, 326, 327, 328, 329, 330, 331, 332, 333, 334, 335, 336, 337, 338, 339, 340, 341, 342, 343, 344, 345, 346, 347, 348, 349, 350, 351, 352, 353, 354, 355, 356, 357, 358, 359, 360, 361, 362, 363, 364, 365, 366, 367, 368, 369, 370, 371, 372, 373, 374, 375, 376, 377, 378, 379, 380, 381, 382, 383, 384, 385, 386, 387, 388, 389, 390, 391, 392, 393, 394, 395, 396, 397, 398, 399, 400, 401, 402, 403, 404, 405, 406, 407, 408, 409, 410, 411, 412, 413, 414, 415, 416, 417, 418, 419, 420, 421, 422, 423, 424, 425, 426, 427, 428, 429, 430, 431, 432, 433, 434, 435, 436, 437, 438, 439, 440, 441, 442, 443, 444, 445, 446, 447, 448, 449, 450, 451, 452, 453, 454, 455, 456, 457, 458, 459, 460, 461, 462, 463, 464, 465, 466, 467, 468, 469, 470, 471, 472, 473, 474, 475, 476, 477, 478, 479, 480, 481, 482, 483, 484, 485, 486, 487, 488, 489, 490, 491, 492, 493, 494, 495, 496, 497, 498, 499, 500, 501, 502, 503, 504, 505, 506, 507, 508, 509, 510, 511, 512, 513, 514, 515, 516, 517, 518, 519, 520, 521, 522, 523, 524, 525, 526, 527, 528, 529, 530, 531, 532, 533, 534, 535, 536, 537, 538, 539, 540, 541, 542, 543, 544, 545, 546, 547, 548, 549, 550, 551, 552, 553, 554, 555, 556, 557, 558, 559, 560, 561, 562, 563, 564, 565, 566, 567, 568, 569, 570, 571, 572, 573, 574, 575, 576, 577, 578, 579, 580, 581, 582, 583, 584, 585, 586, 587, 588, 589, 590, 591, 592, 593, 594, 595, 596, 597, 598, 599, 600, 601, 602, 603, 604, 605, 606, 607, 608, 609, 610, 611, 612, 613, 614, 615, 616, 617, 618, 619, 620, 621, 622, 623, 624, 625, 626, 627, 628, 629, 630, 631, 632, 633, 634, 635, 636, 637, 638, 639, 640, 641, 642, 643, 644, 645, 646, 647, 648, 649, 650, 651, 652, 653, 654, 655, 656, 657, 658, 659, 660, 661, 662, 663, 664, 665, 666, 667, 668, 669, 670, 671, 672, 673, 674, 675, 676, 677, 678, 679, 680, 681, 682, 683, 684, 685, 686, 687, 688, 689, 690, 691, 692, 693, 694, 695, 696, 697, 698, 699, 700, 701, 702, 703, 704, 705, 706, 707, 708, 709, 710, 711, 712, 713, 714, 715, 716, 717, 718, 719, 720, 721, 722, 723, 724, 725, 726, 727, 728, 729, 730, 731, 732, 733, 734, 735, 736, 737, 738, 739, 740, 741, 742, 743, 744, 745, 746, 747, 748, 749, 750, 751, 752, 753, 754, 755, 756, 757, 758, 759, 760, 761, 762, 763, 764, 765, 766, 767, 768, 769, 770, 771, 772, 773, 774, 775, 776, 777, 778, 779, 780, 781, 782, 783, 784, 785, 786, 787, 788, 789, 790, 791, 792, 793, 794, 795, 796, 797, 798, 799, 800, 801, 802, 803, 804, 805, 806, 807, 808, 809, 810, 811, 812, 813, 814, 815, 816, 817, 818, 819, 820, 821, 822, 823, 824, 825, 826, 827, 828, 829, 830, 831, 832, 833, 834, 835, 836, 837, 838, 839, 840, 841, 842, 843, 844, 845, 846, 847, 848, 849, 850, 851, 852, 853, 854, 855, 856, 857, 858, 859, 860, 861, 862, 863, 864, 865, 866, 867, 868, 869, 870, 871, 872, 873, 874, 875, 876, 877, 878, 879, 880, 881, 882, 883, 884, 885, 886, 887, 888, 889, 890, 891, 892, 893, 894, 895, 896, 897, 898, 899, 900, 901, 902, 903, 904, 905, 906, 907, 908, 909, 910, 911, 912, 913, 914, 915, 916, 917, 918, 919, 920, 921, 922, 923, 924, 925, 926, 927, 928, 929, 930, 931, 932, 933, 934, 935, 936, 937, 938, 939, 940, 941, 942, 943, 944, 945, 946, 947, 948, 949, 950, 951, 952, 953, 954, 955, 956, 957, 958, 959, 960, 961, 962, 963, 964, 965, 966, 967, 968, 969, 970, 971, 972, 973, 974, 975, 976, 977, 978, 979, 980, 981, 982, 983, 984, 985, 986, 987, 988, 989, 990, 991, 992, 993, 994, 995, 996, 997, 998, 999, 1000	17099C0530E	17099C0530F
LOMA	10-05-6035A		LOT 1 & 2, Block 1, Ottawa-Cote Subdivision - 1006 SHERBOURNE	17099C0530E	17099C0530F
LOMA	10-05-6036A		LOT 3 & 4, Block 1, Ottawa-Cote Subdivision - 1006 SHERBOURNE	17099C0530E	17099C0530F
LOMA	10-05-6037A		LOT 5 & 6, Block 1, Ottawa-Cote Subdivision - 1006 SHERBOURNE	17099C0530E	17099C0530F
LOMA	10-05-6038A		LOT 7 & 8, Block 1, Ottawa-Cote Subdivision - 1006 SHERBOURNE	17099C0530E	17099C0530F
LOMA	10-05-6039A		LOT 9 & 10, Block 1, Ottawa-Cote Subdivision - 1006 SHERBOURNE	17099C0530E	17099C0530F
LOMA	10-05-6040A		LOT 11 & 12, Block 1, Ottawa-Cote Subdivision - 1006 SHERBOURNE	17099C0530E	17099C0530F
LOMA	10-05-6041A		LOT 13 & 14, Block 1, Ottawa-Cote Subdivision - 1006 SHERBOURNE	17099C0530E	17099C0530F
LOMA	10-05-6042A		LOT 15 & 16, Block 1, Ottawa-Cote Subdivision - 1006 SHERBOURNE	17099C0530E	17099C0530F
LOMA	10-05-6043A		LOT 17 & 18, Block 1, Ottawa-Cote Subdivision - 1006 SHERBOURNE	17099C0530E	17099C0530F
LOMA	10-05-6044A		LOT 19 & 20, Block 1, Ottawa-Cote Subdivision - 1006 SHERBOURNE	17099C0530E	17099C0530F
LOMA	10-05-6045A		LOT 21 & 22, Block 1, Ottawa-Cote Subdivision - 1006 SHERBOURNE	17099C0530E	17099C0530F
LOMA	10-05-6046A		LOT 23 & 24, Block 1, Ottawa-Cote Subdivision - 1006 SHERBOURNE	17099C0530E	17099C0530F
LOMA	10-05-6047A		LOT 25 & 26, Block 1, Ottawa-Cote Subdivision - 1006 SHERBOURNE	17099C0530E	17099C0530F
LOMA	10-05-6048A		LOT 27 & 28, Block 1, Ottawa-Cote Subdivision - 1006 SHERBOURNE	17099C0530E	17099C0530F
LOMA	10-05-6049A		LOT 29 & 30, Block 1, Ottawa-Cote Subdivision - 1006 SHERBOURNE	17099C0530E	17099C0530F
LOMA	10-05-6050A		LOT 31 & 32, Block 1, Ottawa-Cote Subdivision - 1006 SHERBOURNE	17099C0530E	17099C0530F
LOMA	10-05-6051A		LOT 33 & 34, Block 1, Ottawa-Cote Subdivision - 1006 SHERBOURNE	17099C0530E	17099C0530F
LOMA	10-05-6052A		LOT 35 & 36, Block 1, Ottawa-Cote Subdivision - 1006 SHERBOURNE	17099C0530E	17099C0530F
LOMA	10-05-6053A		LOT 37 & 38, Block 1, Ottawa-Cote Subdivision - 1006 SHERBOURNE	17099C0530E	17099C0530F
LOMA	10-05-6054A		LOT 39 & 40, Block 1, Ottawa-Cote Subdivision - 1006 SHERBOURNE	17099C0530E	17099C0530F
LOMA	10-05-6055A		LOT 41 & 42, Block 1, Ottawa-Cote Subdivision - 1006 SHERBOURNE	17099C0530E	17099C0530F
LOMA	10-05-6056A		LOT 43 & 44, Block 1, Ottawa-Cote Subdivision - 1006 SHERBOURNE	17099C0530E	17099C0530F
LOMA	10-05-6057A		LOT 45 & 46, Block 1, Ottawa-Cote Subdivision - 1006 SHERBOURNE	17099C0530E	17099C0530F
LOMA	10-05-6058A		LOT 47 & 48, Block 1, Ottawa-Cote Subdivision - 1006 SHERBOURNE	17099C0530E	17099C0530F
LOMA	10-05-6059A		LOT 49 & 50, Block 1, Ottawa-Cote Subdivision - 1006 SHERBOURNE	17099C0530E	17099C0530F
LOMA	10-05-6060A		LOT 51 & 52, Block 1, Ottawa-Cote Subdivision - 1006 SHERBOURNE	17099C0530E	17099C0530F
LOMA	10-05-6061A		LOT 53 & 54, Block 1, Ottawa-Cote Subdivision - 1006 SHERBOURNE	17099C0530E	17099C0530F
LOMA	10-05-6062A		LOT 55 & 56, Block 1, Ottawa-Cote Subdivision - 1006 SHERBOURNE	17099C0530E	17099C0530F
LOMA	10-05-6063A		LOT 57 & 58, Block 1, Ottawa-Cote Subdivision - 1006 SHERBOURNE	17099C0530E	17099C0530F
LOMA	10-05-6064A		LOT 59 & 60, Block 1, Ottawa-Cote Subdivision - 1006 SHERBOURNE	17099C0530E	17099C0530F
LOMA	10-05-6065A		LOT 61 & 62, Block 1, Ottawa-Cote Subdivision - 1006 SHERBOURNE	17099C0530E	17099C0530F
LOMA	10-05-6066A		LOT 63 & 64, Block 1, Ottawa-Cote Subdivision - 1006 SHERBOURNE	17099C0530E	17099C0530F
LOMA	10-05-6067A		LOT 65 & 66, Block 1, Ottawa-Cote Subdivision - 1006 SHERBOURNE	17099C0530E	17099C0530F
LOMA	10-05-6068A		LOT 67 & 68, Block 1, Ottawa-Cote Subdivision - 1006 SHERBOURNE	17099C0530E	17099C0530F
LOMA	10-05-6069A		LOT 69 & 70, Block 1, Ottawa-Cote Subdivision - 1006 SHERBOURNE	17099C0530E	17099C0530F
LOMA	10-05-6070A		LOT 71 & 72, Block 1, Ottawa-Cote Subdivision - 1006 SHERBOURNE	17099C0530E	17099C0530F
LOMA	10-05-6071A		LOT 73 & 74, Block 1, Ottawa-Cote Subdivision - 1006 SHERBOURNE	17099C0530E	17099C0530F
LOMA	10-05-6072A		LOT 75 & 76, Block 1, Ottawa-Cote Subdivision - 1006 SHERBOURNE	17099C0530E	17099C0530F
LOMA	10-05-6073A		LOT 77 & 78, Block 1, Ottawa-Cote Subdivision - 1006 SHERBOURNE	17099C0530E	17099C0530F
LOMA	10-05-6074A		LOT 79 & 80, Block 1, Ottawa-Cote Subdivision - 1006 SHERBOURNE	17099C0530E	17099C0530F
LOMA	10-05-6075A		LOT 81 & 82, Block 1, Ottawa-Cote Subdivision - 1006 SHERBOURNE	17099C0530E	17099C0530F
LOMA	10-05-6076A		LOT 83 & 84, Block 1, Ottawa-Cote Subdivision - 1006 SHERBOURNE	17099C0530E	17099C0530F
LOMA	10-05-6077A		LOT 85 & 86, Block 1, Ottawa-Cote Subdivision - 1006 SHERBOURNE	17099C0530E	17099C0530F
LOMA	10-05-6078A		LOT 87 & 88, Block 1, Ottawa-Cote Subdivision - 1006 SHERBOURNE	17099C0530E	17099C0530F
LOMA	10-05-6079A		LOT 89 & 90, Block 1, Ottawa-Cote Subdivision - 1006 SHERBOURNE	17099C0530E	17099C0530F
LOMA	10-05-6080A		LOT 91 & 92, Block 1, Ottawa-Cote Subdivision - 1006 SHERBOURNE	17099C0530E	17099C0530F
LOMA	10-05-6081A		LOT 93 & 94, Block 1, Ottawa-Cote Subdivision - 1006 SHERBOURNE	17099C0530E	17099C0530F
LOMA	10-05-6082A		LOT 95 & 96, Block 1, Ottawa-Cote Subdivision - 1006 SHERBOURNE	17099C0530E	17099C0530F
LOMA	10-05-6083A		LOT 97 & 98, Block 1, Ottawa-Cote Subdivision - 1006 SHERBOURNE	17099C0530E	17099C0530F
LOMA	10-05-6084A		LOT 99 & 100, Block 1, Ottawa-Cote Subdivision - 1006 SHERBOURNE	17099C0530E	17099C0530F

SOMA-2

## FINAL SUMMARY OF MAP ACTIONS

Community: OTTAWA, CITY OF

Community No: 170405

# Flood Saturday reaches Center Ottawa



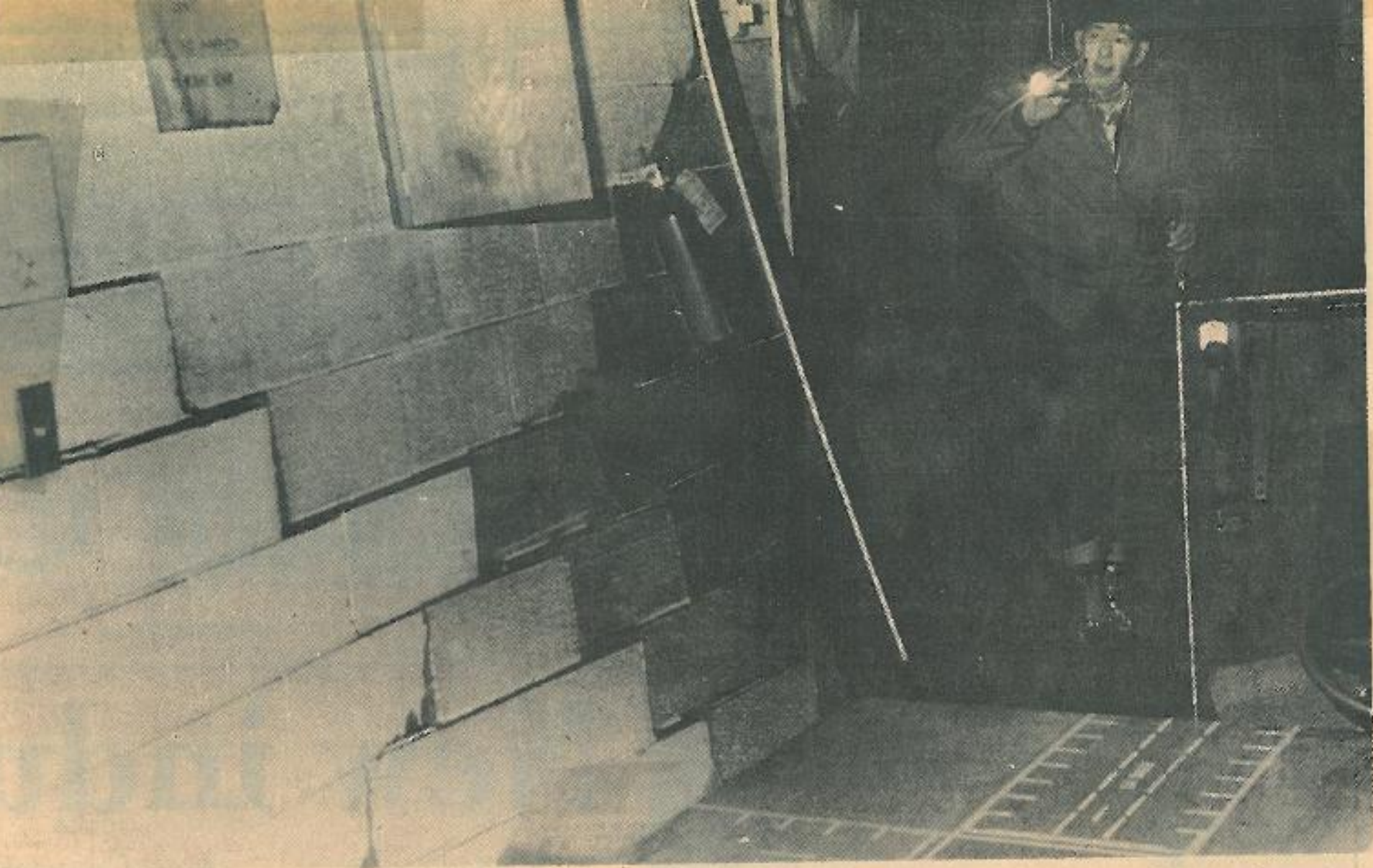
## *Pumper truck*

The fire department used a pumper truck Saturday to try to keep ahead of the flood waters in the OHS cafeteria. (Daily Times photo)



## *Street covered*

A youth on a bicycle shows the depth of the water at Shabbona and Main Streets Saturday. (Daily Times photo)



### ***Buckled wall at OHS***

Ottawa High School administrative assistant Ken Fread shines a flashlight on a cement block wall that buckled in the driver's education department over the weekend from the force of the floodwaters entering the complex.

OHS officials made a tentative survey of damages this morning while water pumps still labored in the murky depths of the building. (Daily Times photo.)



# National Weather Service

## Advanced Hydrologic Prediction Service



weather.gov

[Home](#)   [News](#)   [Organization](#)   Search for:     NWS    All NOAA

Weather Forecast Office Chicago, IL

North Central River Forecast Center

**Flood Warning**

**Flash Flood Watch**

[View all valid statements/warnings](#)

Local weather forecast by "City, ST"

City, ST

National Conditions  
[Rivers](#)  
[Satellite](#)  
[Climate](#)  
[Observed Precip](#)

Local Conditions  
[Warnings](#)  
[Weather Forecast Radar](#)

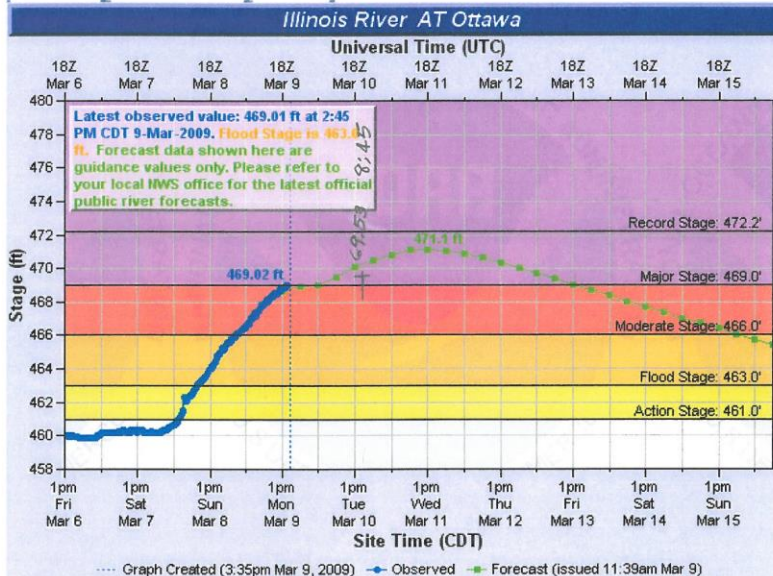
AHPS Documentation  
[User Guide](#)

What is AHPS?  
[Facts](#)  
[Our Partners](#)

Feedback/Questions  
[Provide Feedback](#)  
[Ask Questions](#)



[Hydrograph](#)   [River at a Glance](#)   [Download](#)



OTW2 (plotting HGIRG) "Gage 0" Datum: 450.00'   [Observations courtesy of the US Army Corps of Engineers](#)

- [Printable Image](#)
- [About this graph](#)
- [Tabular Data](#)
- [XML](#)
- [RSS](#)
- Datum: N/A
- [Metadata](#)

**NOTE: River forecasts for this location take into account past precipitation and the precipitation amounts expected approximately 24 hours into the future from the forecast issuance time.**

**Default Hydrograph**

**NOTE: Forecasts for the Illinois River at Ottawa are issued as needed during times of high water, but are not routinely available.**

← Upstream Gauge   Downstream Gauge →

**Flood Categories (in feet)**  
 Major Flood Stage: 469  
 Moderate Flood Stage: 466  
 Flood Stage: 463  
 Action Stage: 461

**Historical Crests**  
 (1) 472.21 ft on 09/16/2008

460.8	River Rescue	Emergency boat docks and ramps begin to flood. Building Official contacts River Rescue.
461.24	Public Works	Illinois River overtops CSO 18B at High School. City Engineer confirms with Director of Public Works
461.3	Ottawa High School	River infiltrates East side City storm system. Pumping begins to control stormwater and mixed systems.
461.7	City of Ottawa	Fox River tops Combined Sewer Overflow (CSO) 18A at Ottawa High School. Close valve in Manhole 011C546. City Engineer confirms with Public Works.

**FLOOD STAGE**

462.5	Ottawa High School	River flooding infiltrates West Parking Lot. Close Gate B, begin pumping to mitigate seepage & storm water.
463	City of Ottawa	City Engineer & Building Official to notify Central School, Ottawa Regional Hospital, YMCA, & Public Works, Ottawa Police and Fire Departments to prepare for further flood fighting.
463.5	Ottawa High School	Illinois River flows into effluent pipe. Close gravity effluent valve and start high river pumps.
463.5	City of Ottawa	Building Official notifies Public Works to close Allen Park. Have ThruSan Sanitation remove portable toilets from Allen Park. Have the electrical inspector see that the River Walk power is shut down.
464	City of Ottawa	City Engineer to notify Ameren and Nicor Gas to close down all utilities in the Special Flood Hazard Area.
465	Heritage Harbor	Harborwalk floods. Dock ramps cannot be accessed without a boat.

**Moderate Flood Stage**

465.3	Ottawa Regional Hospital	Building Official contacts hospital. Lower green spaces on the hospital grounds begin to flood.
465.3	City of Ottawa	City Engineer contacts Public Works to barricade Hudson Street as it will become impassible
465.5	Marquette High School	Football fields begin to flood. Building Official contacts high school.
466	Heritage Harbor	Travel-lift slab area begins to flood. Secure all items and remove to high ground.
466.4	City of Ottawa	City Engineer ensures that River Walk at Hudson Street is closed, Fox River Park is closed and St. Clair Street is barricaded.
467.2	City of Ottawa	Illinois River level reaches Douglas and Leland CSO. City Engineer to notify Waste Water Treatment Plant.
467.3	City of Ottawa	Illinois River level reaches Chester Street CSO. City Engineer to notify Public Works to close sluice gate MH012D011

467.5	City of Ottawa and Shoreline Boat Club	Building Official to notify Streets Department to close Green Street. Notify Fire Dept. and Police of limited access to East side. Notify Shoreline Boat Club to secure boats & land cradles and to evacuate property.
468.1	Ottawa Elementary School	Illinois River reaches top of bank South of Central School. Crawl space begins to flood.
468.1	River Rescue	Building is threatened. River Rescue personnel to remove equipment to higher ground and begin 24 hour watch.
468.7	City of Ottawa	Fox River is flowing into CSO-011 off Main Street.
468.7	River Rescue	River infiltrates building.
468.7	City of Ottawa	Illinois River is flowing into CSO-006 off Riverview Drive.
468.8	YMCA	Flood fighting begins, sandbag lower level entry ways.

**MAJOR FLOOD STAGE**

469	Ottawa Regional Hospital	Shut storm drain valve off.
469	City of Ottawa	City Engineer engages incident command. Activate the City of Ottawa's Emergency Response Plan. Notify the Mayor of emergency status. Designate Public Information Officer and contact LaSalle County EOM, Contact Red Cross, WCMY radio station, Ottawa Delivered and The Times. Activate Community Emergency Notification System (CENS) for the "Flats".
470	Ottawa High School	River infiltration at Shabbona Street begins. Construction of sandbag enclosure begins.
470.2	City of Ottawa	City Engineer to have Public Works monitor Jackson Street lift station. Shut down power if necessary.
471.3	YMCA	Fox River reaches center of parking lot.
471.5	City of Ottawa	Fox River is flowing into CSO-013 off Madison Street
472	Ottawa Regional Hospital	West parking lot floods
472.2	City of Ottawa	Sand bag Waste Water Treatment facility berm
473	Ottawa Regional Hospital	Emergency Room Floor Elevation. Flood protection wall installed in 2009 should prevent any infiltration of water.
474	Shoreline Boat Club	Building will be under water.
474	City of Ottawa	Illinois River will overtop the berm at WWTP if not sandbagged.
474.5	Ottawa High School	Top of Fox River levee.
475	Heritage Harbor	All power should be shut down to docks.
475.33	Heritage Harbor	Lowest basement begins to flood
475.85	Ottawa High School	Top of flood protection wall on Fox River South of Main Street Bridge.
476	City of Ottawa	City Engineer to monitor Main Street bridge. If the Main Street bridge is to be closed, move to Unified Command. Consider evacuation of East side. Mayor to consider Disaster Declaration. Notify all residents of East Side via CENS. Police and Fire Departments to take appropriate action.



SEP 16 2008

# FLOW MODELING, MAPPING & H&H DONE THE TOOLS THAT MEASURE OUR SUCCESS

•CENTRAL SCHOOL

•THE FLATS

•HIGH SCHOOL LEVEE

