



STREAM RELOCATION OF UNNAMED TRIBUTARY TO THE KANKAKEE RIVER

KEVIN SHEA, E.I.T., CFM

KATIE HUFFMAN, E.I.T., CFM

MARCH 12, 2024



Project Background

City of Wilmington, Will County, IL

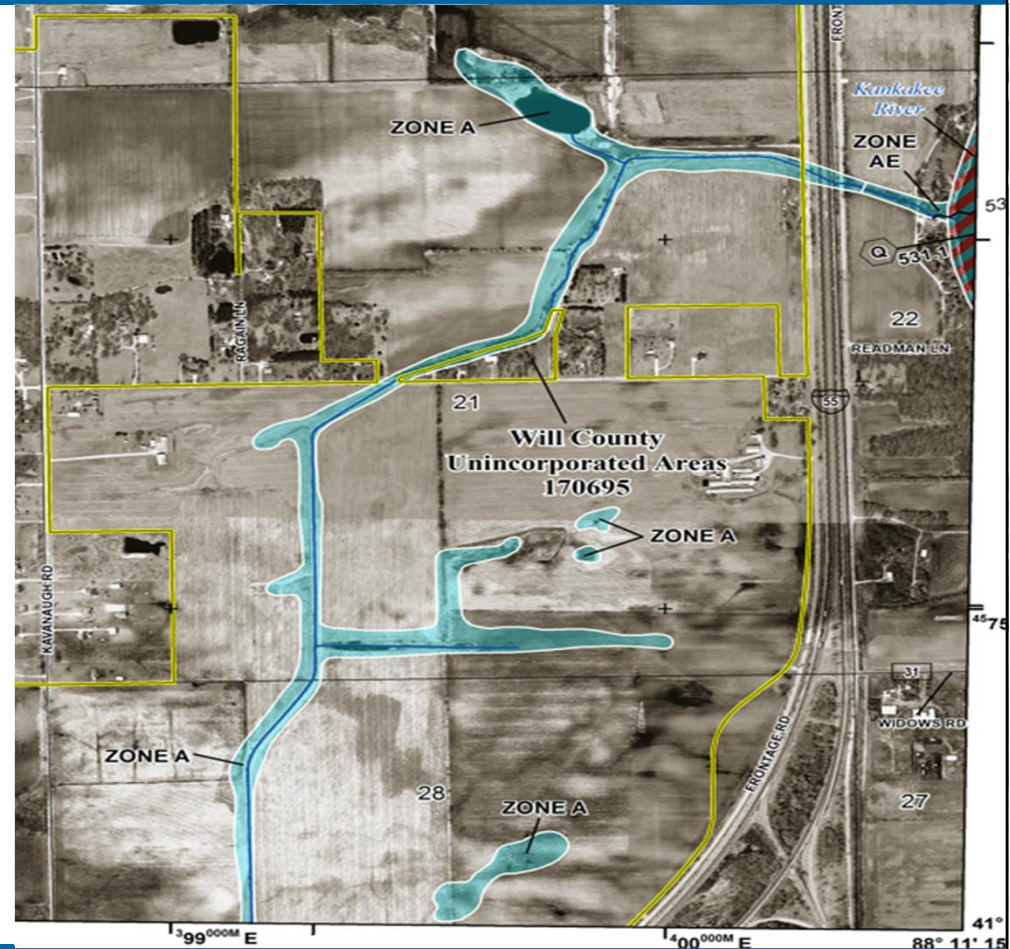
Project Area: ±740 acres

Project Proposal: Industrial Park



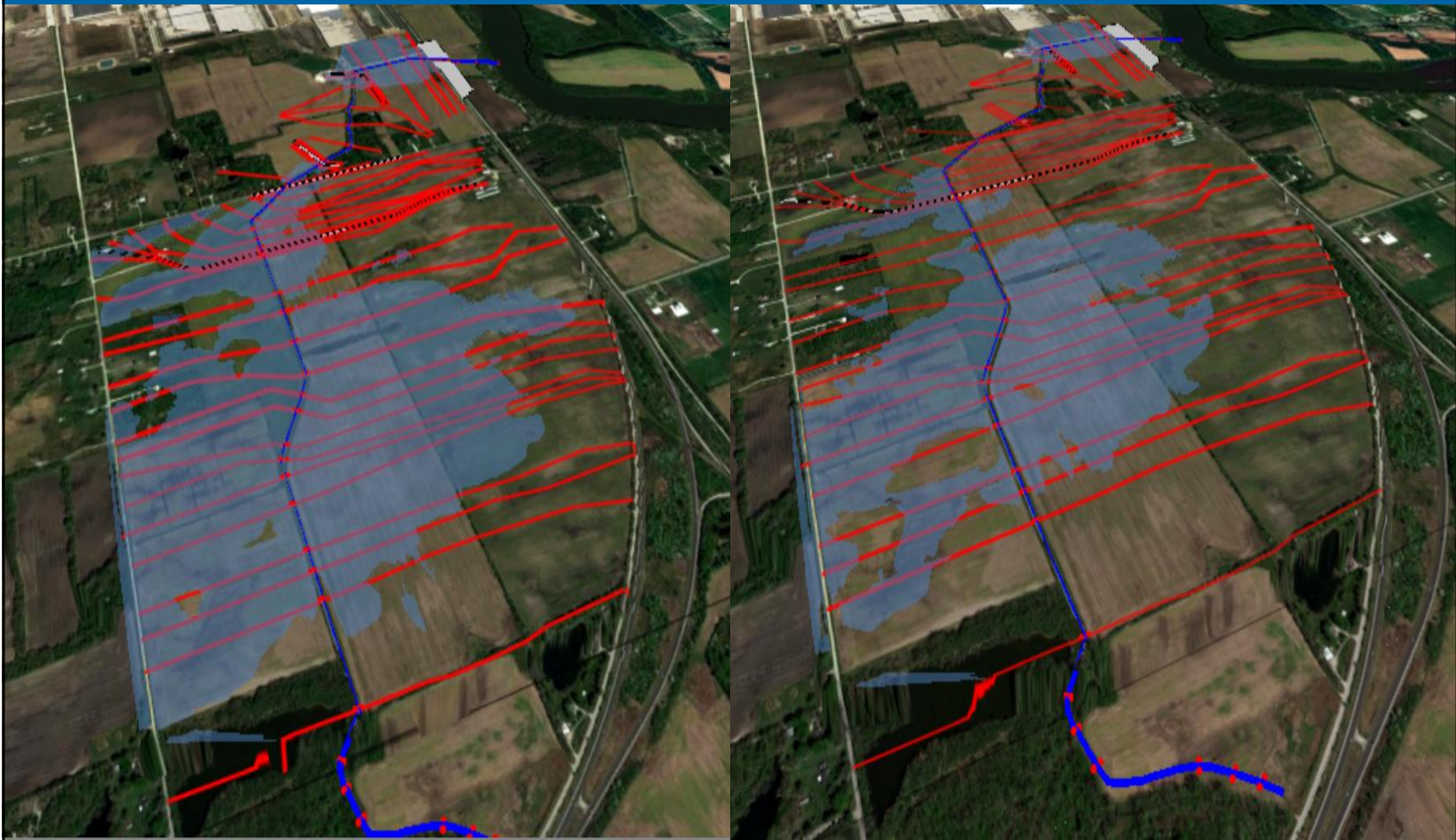
Project Background – Floodplain

- H&H Modeling
- Restrictive culverts at I-55 and Murphy Road
- Artificial storage upstream of Murphy Road

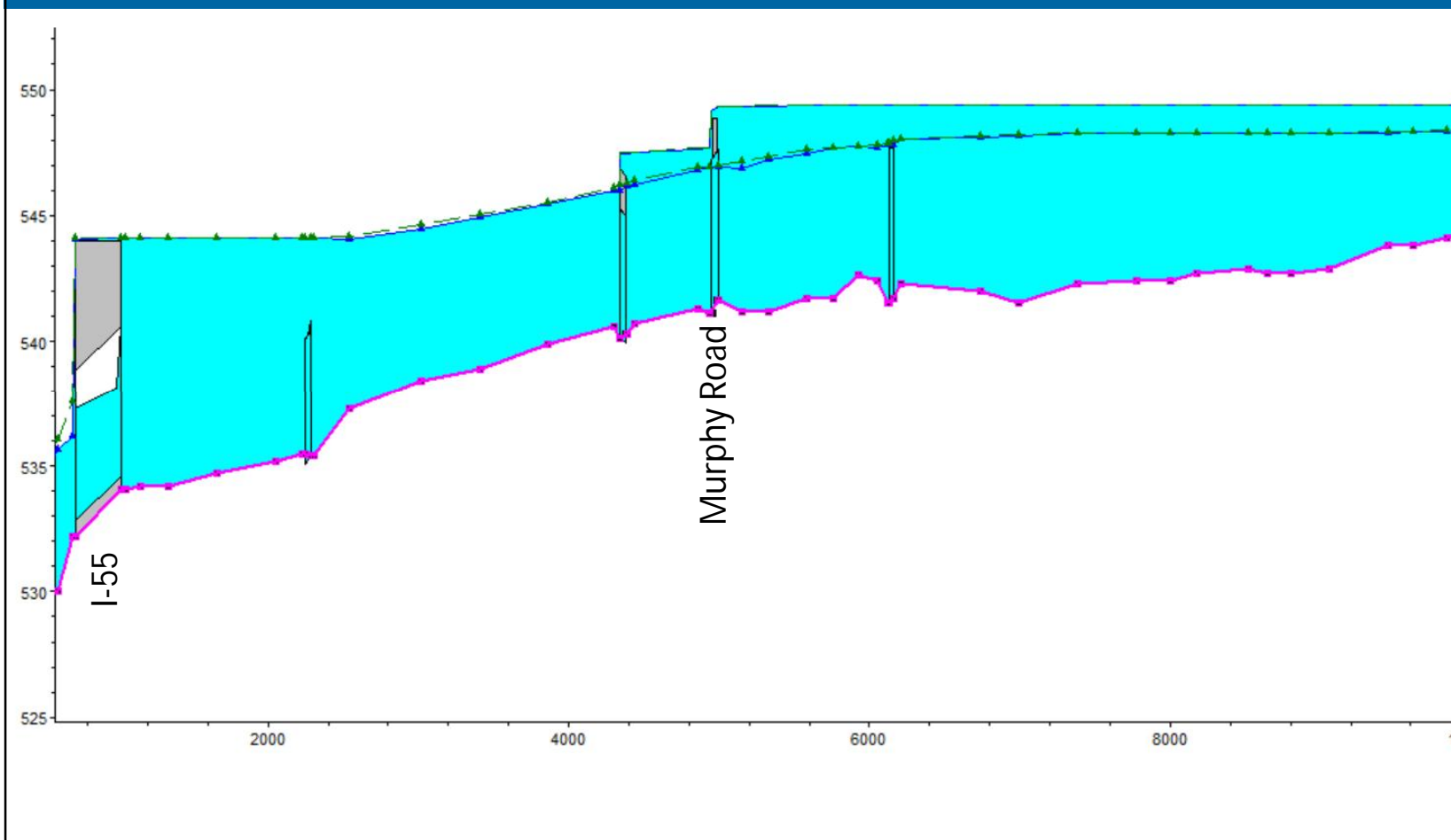


Project Background – Floodplain - Natural

EXISTING CONDITIONS NATURAL CONDITIONS

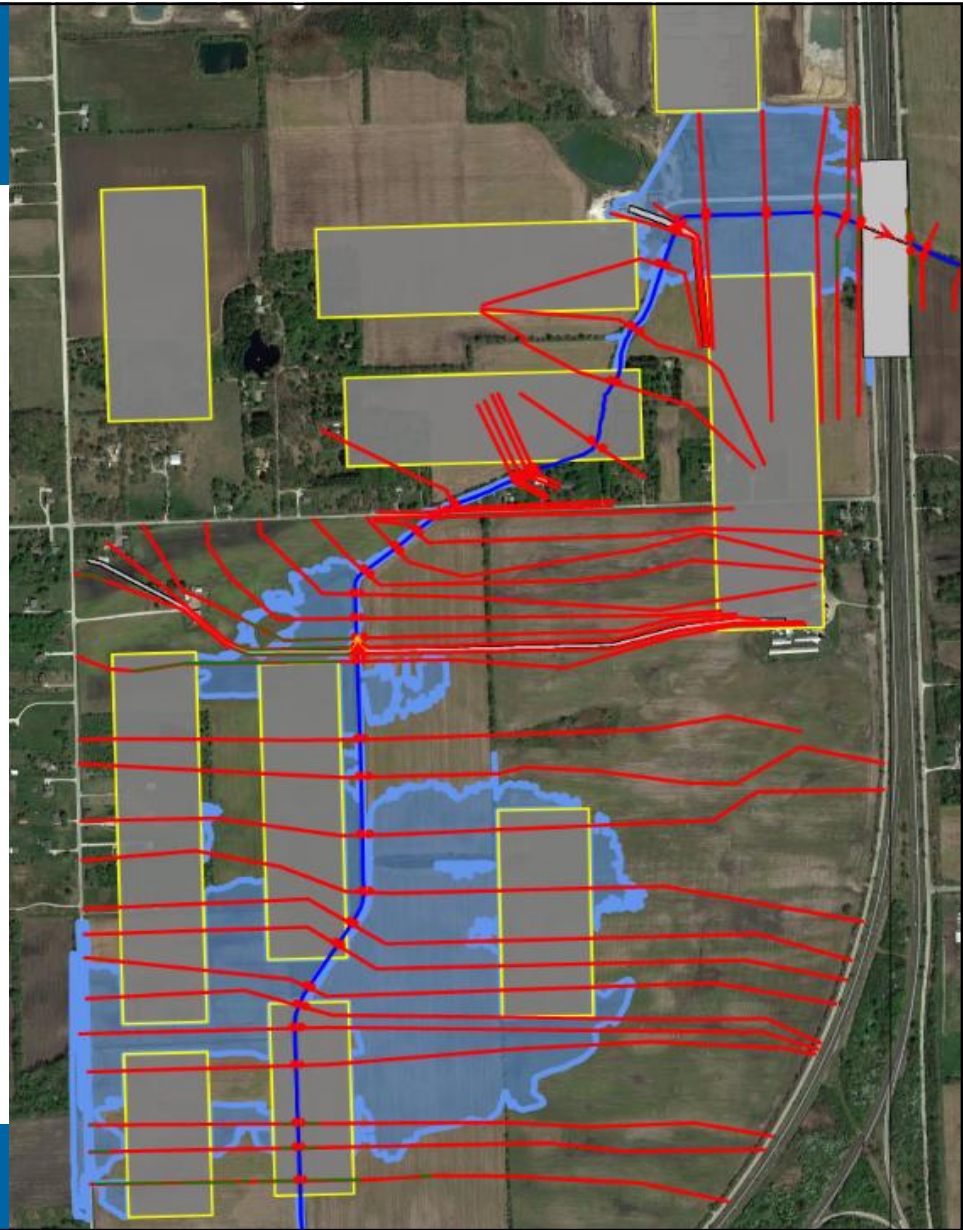


Project Background – Floodplain - Natural

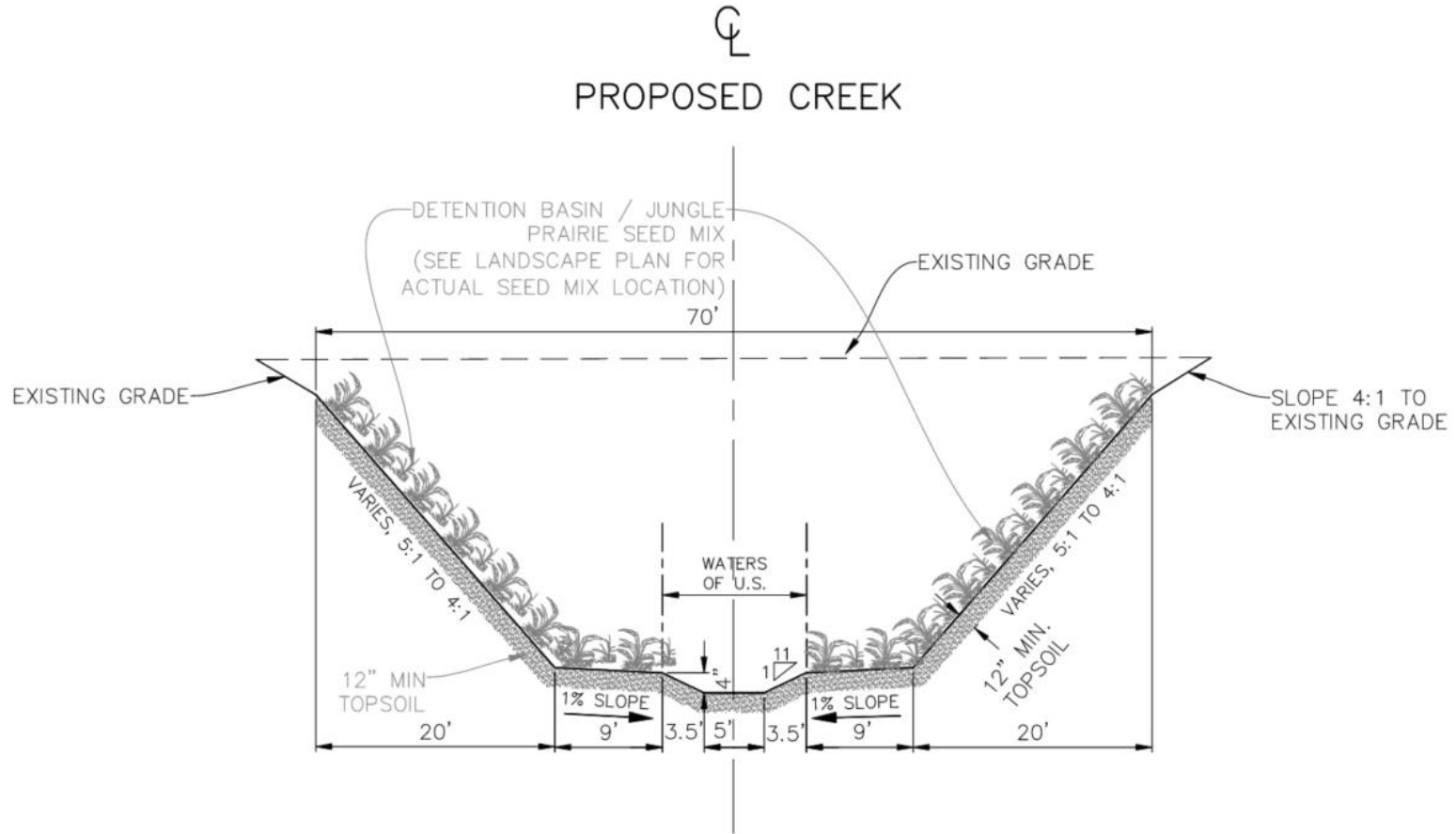


Project Objective

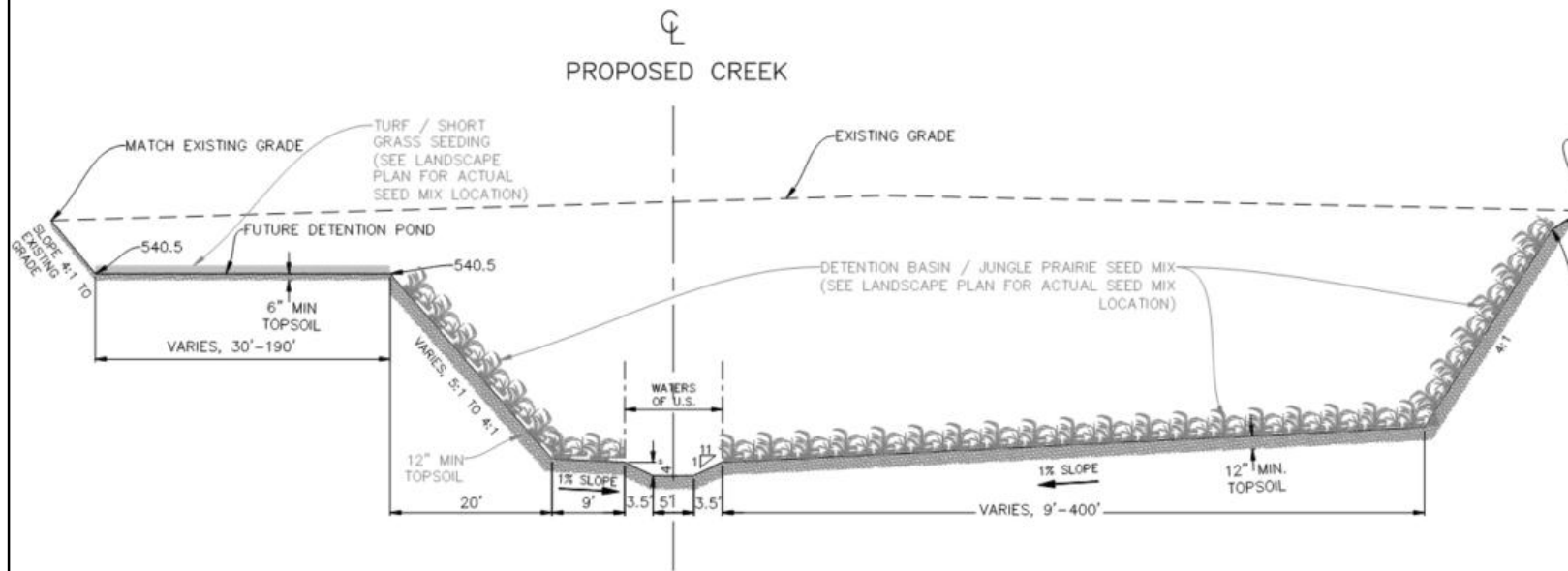
- **Reroute Channel for proposed intermodal facility**
- **Reduce 1% chance event water surface profile and surface area**
- **Habitat and natural resource enhancement**

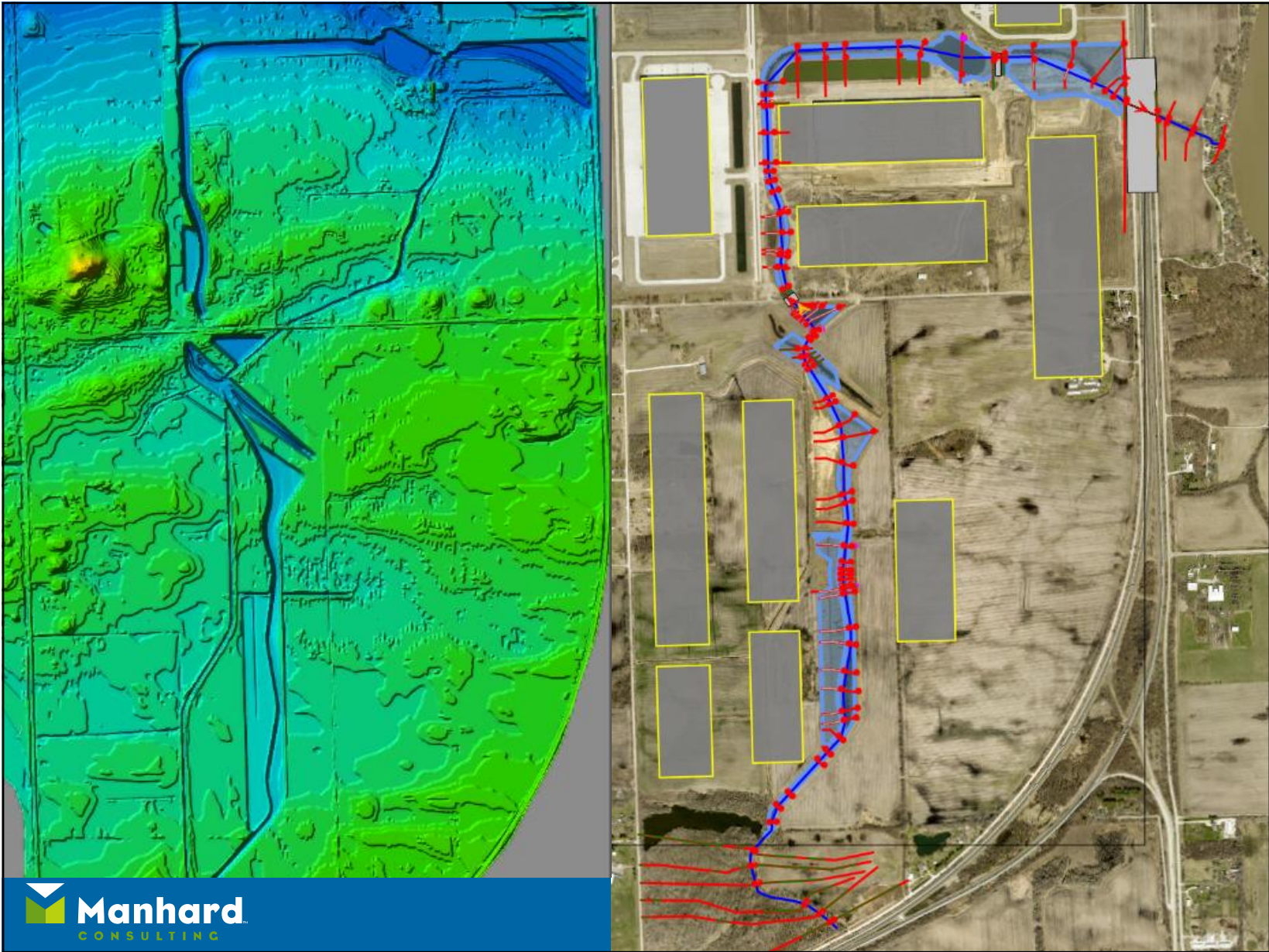


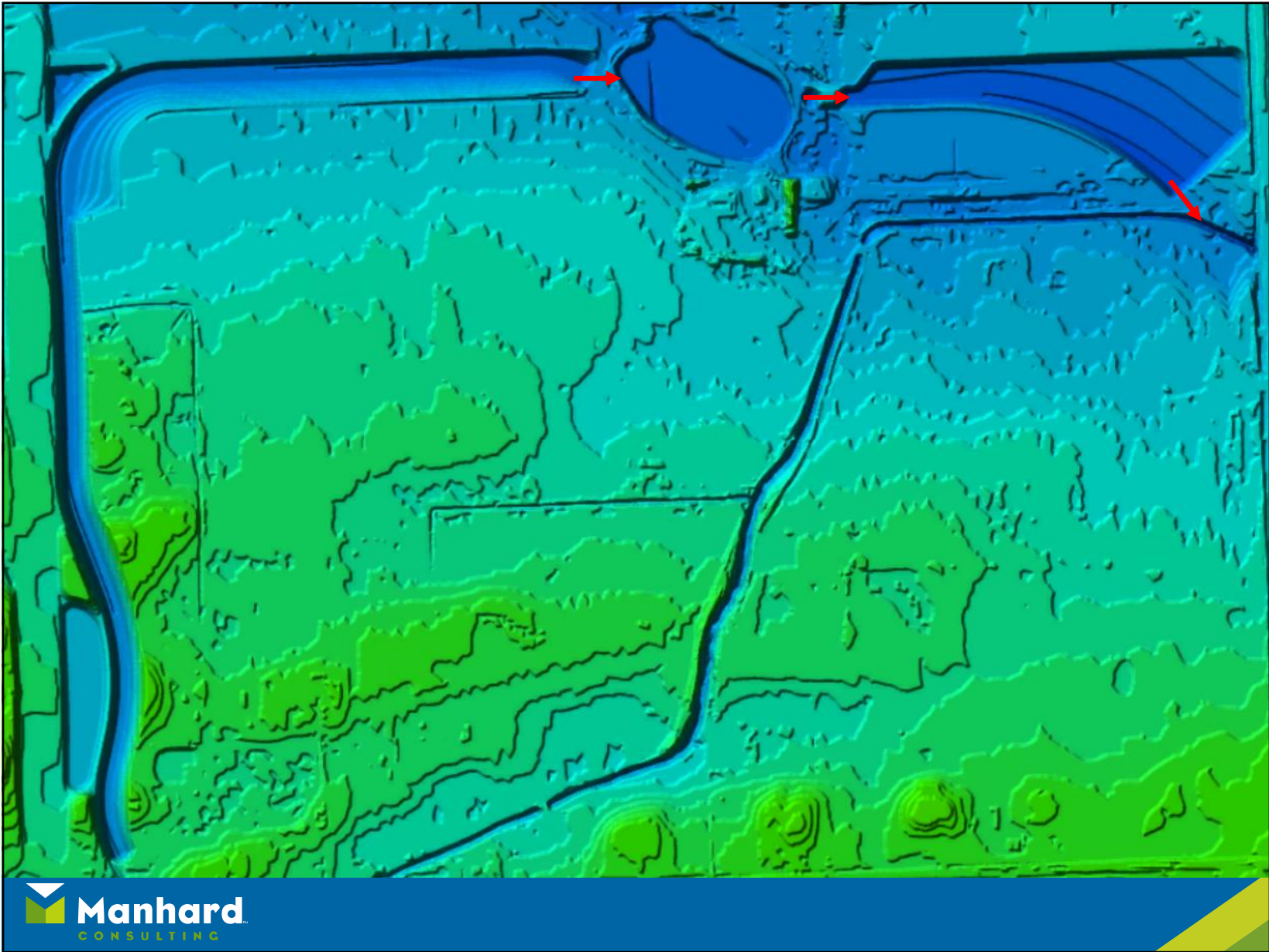
Channel Design

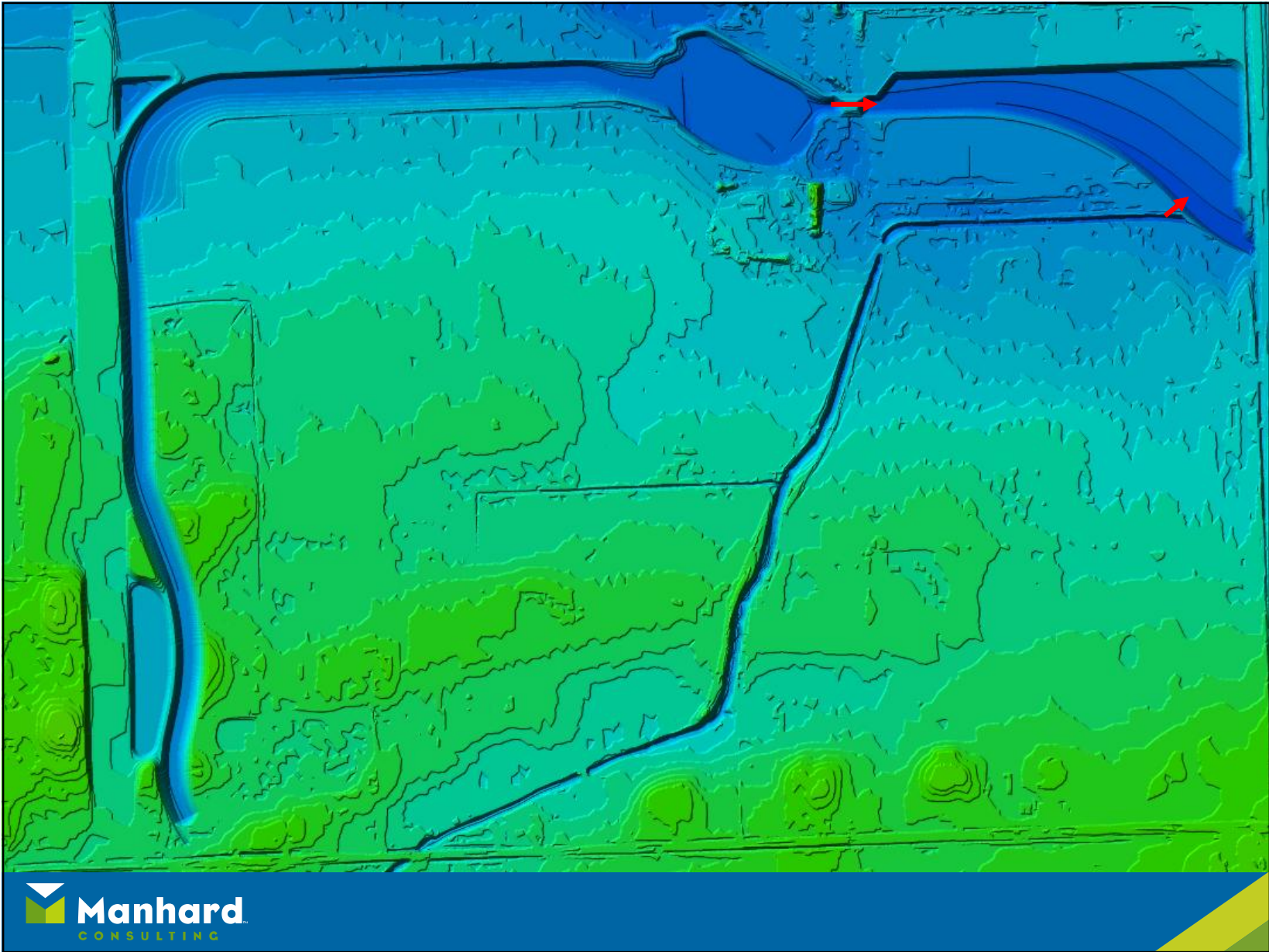


Channel Design



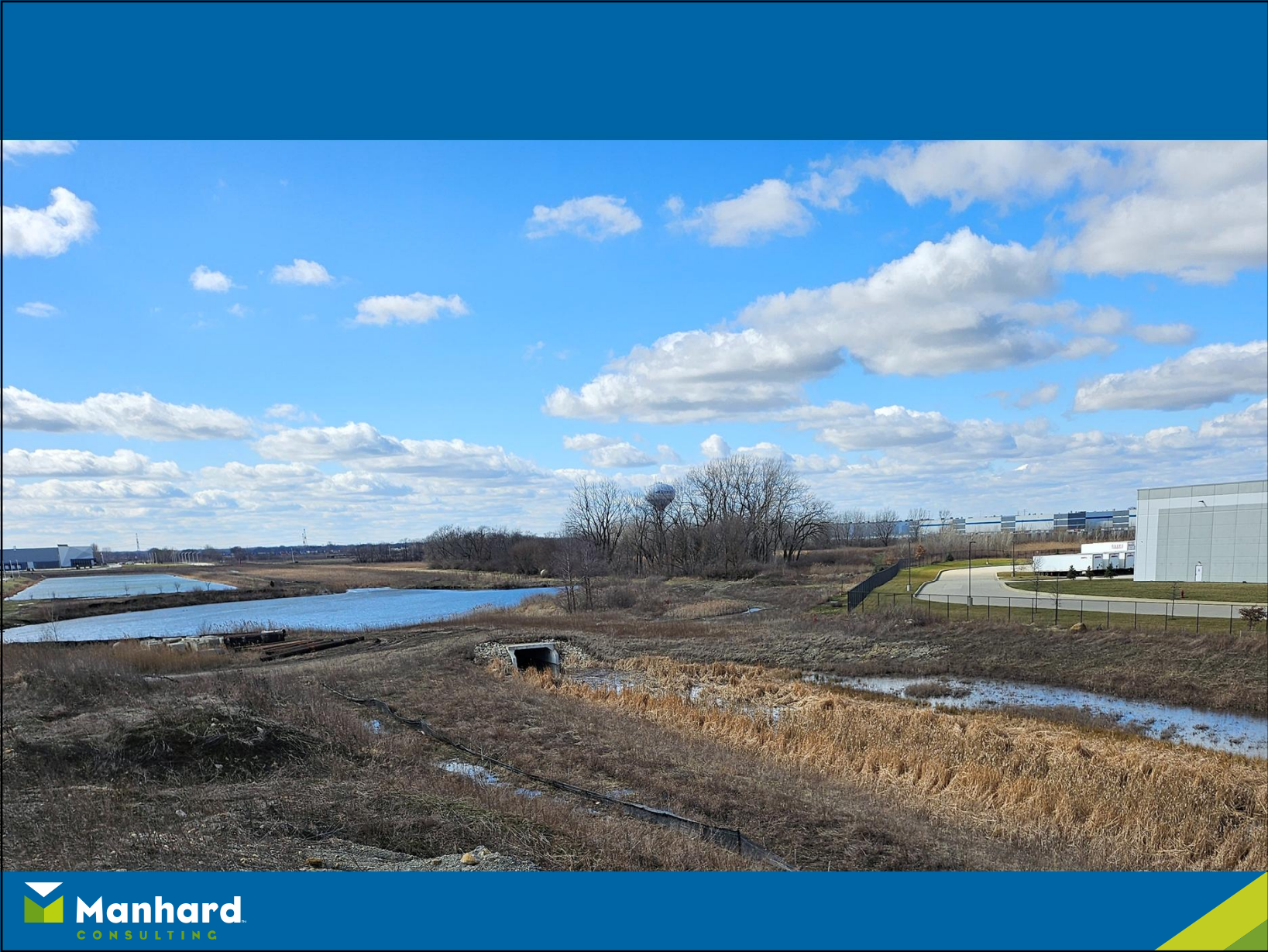






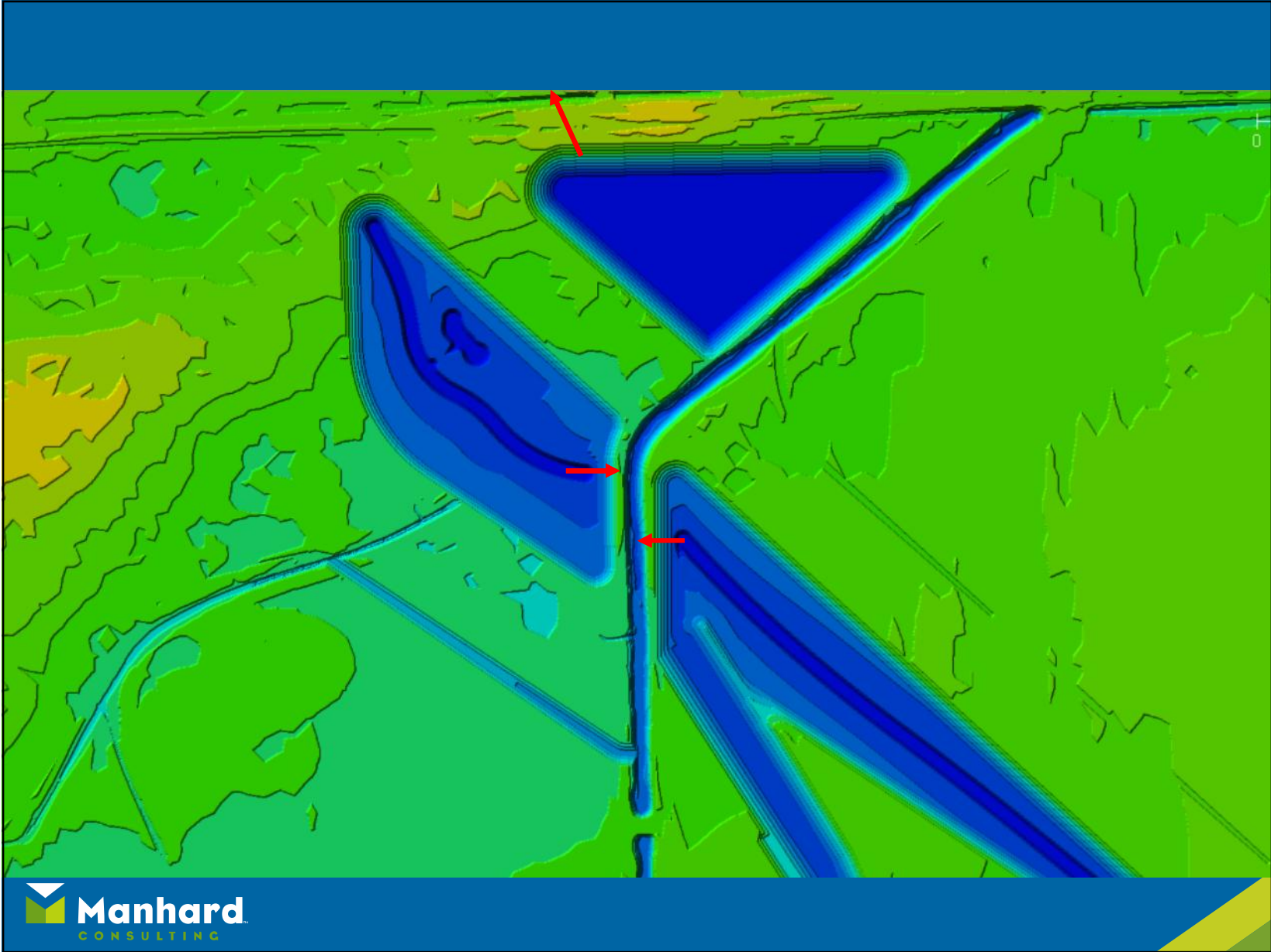


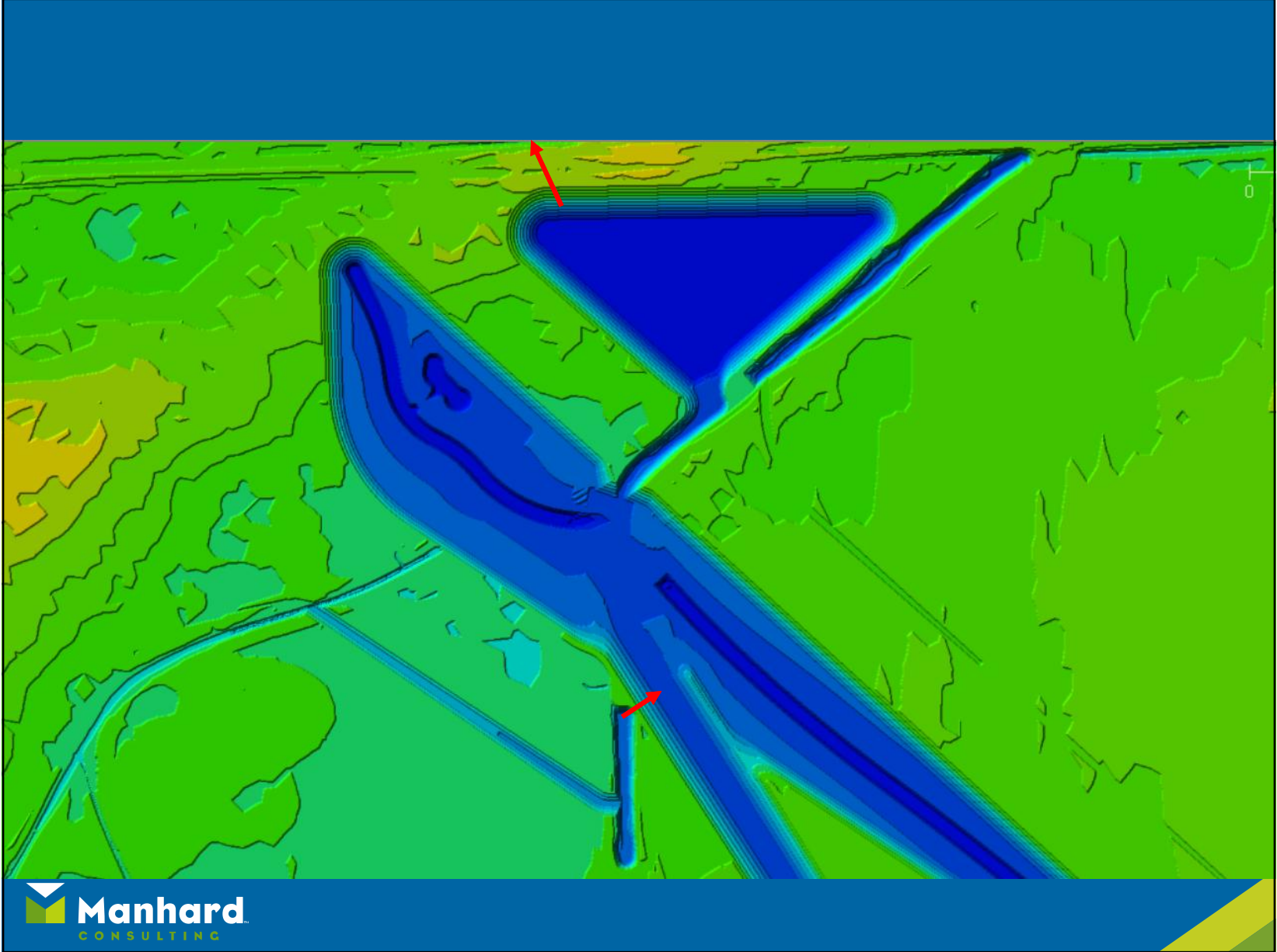






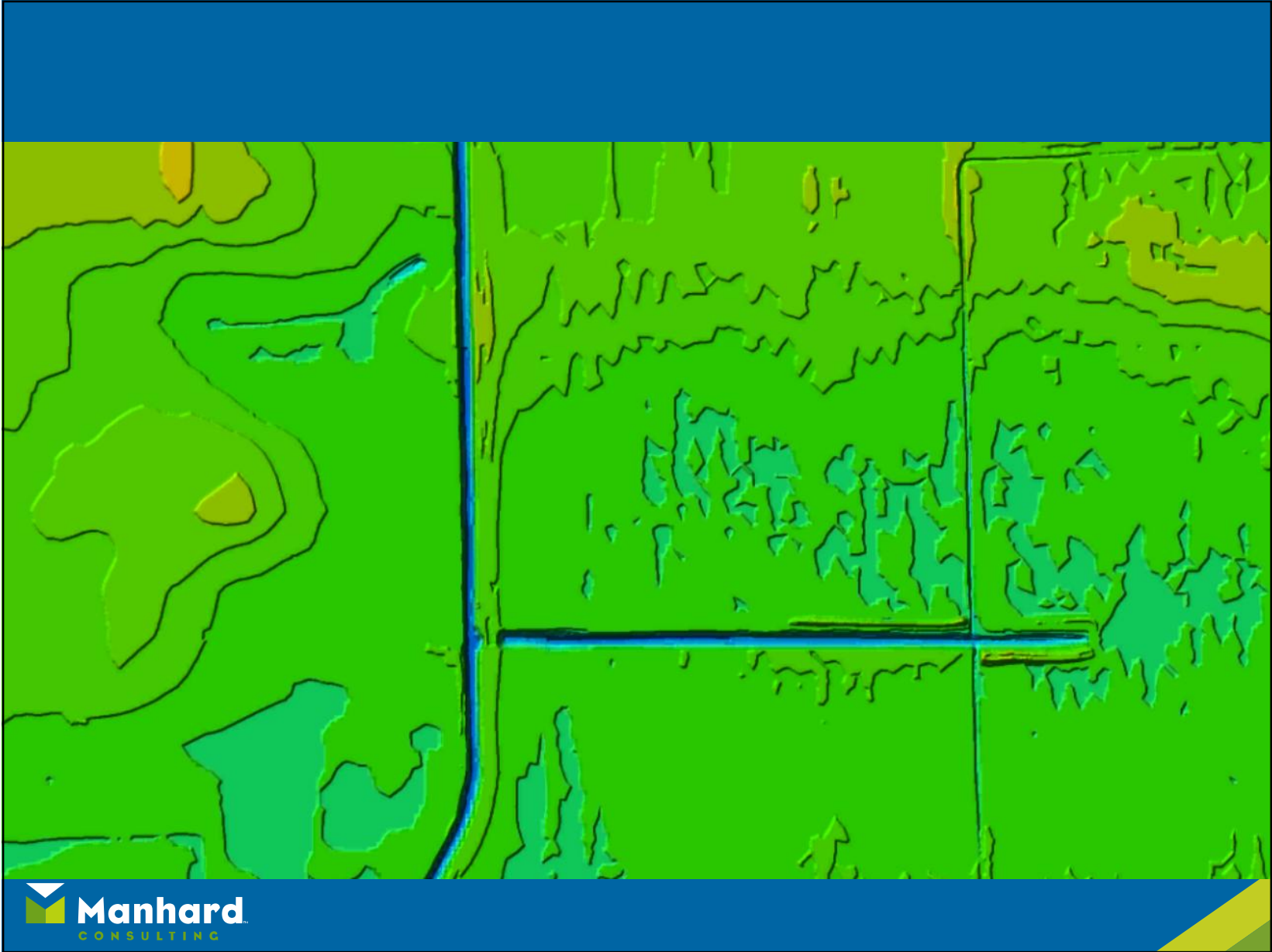


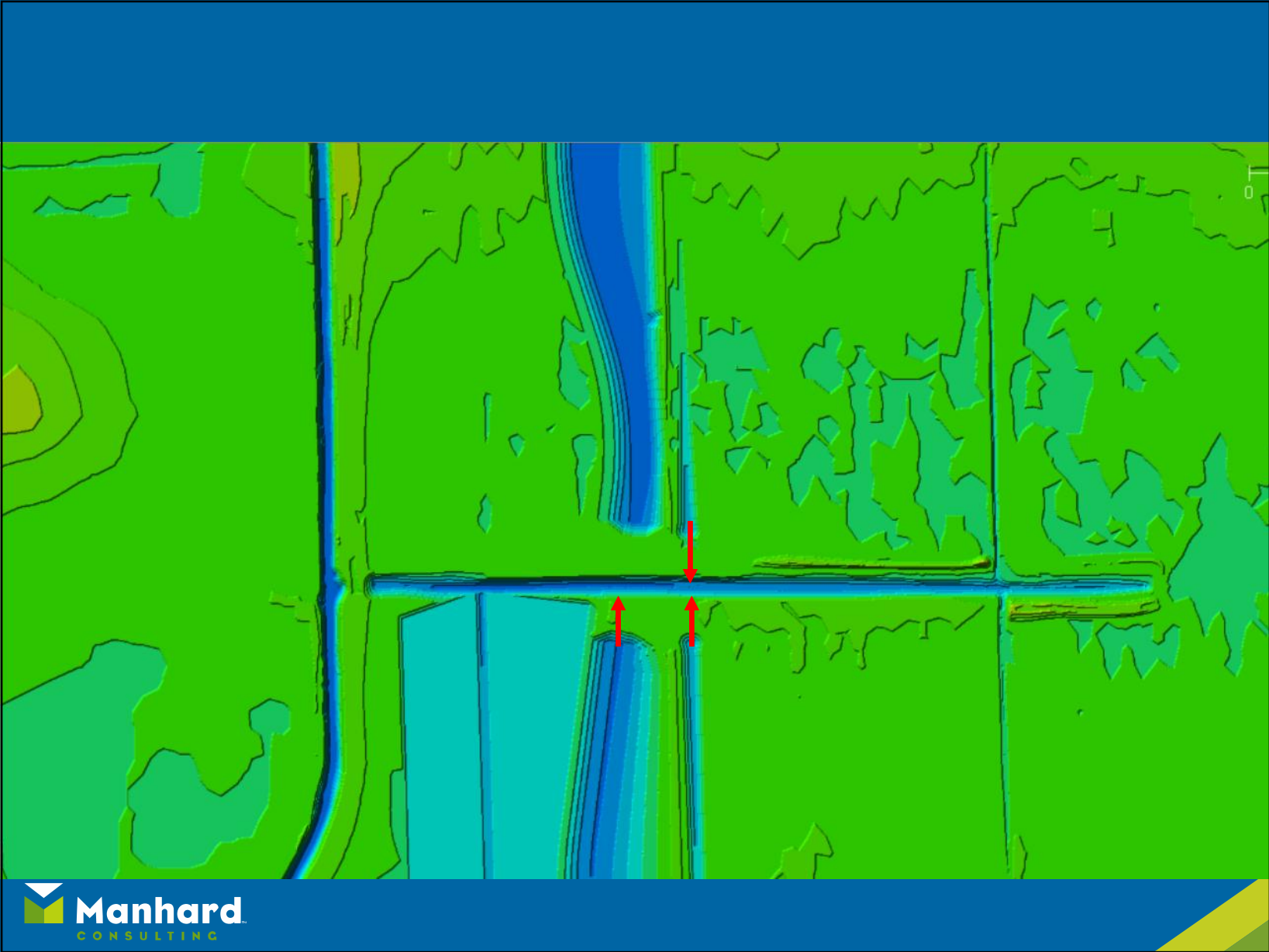


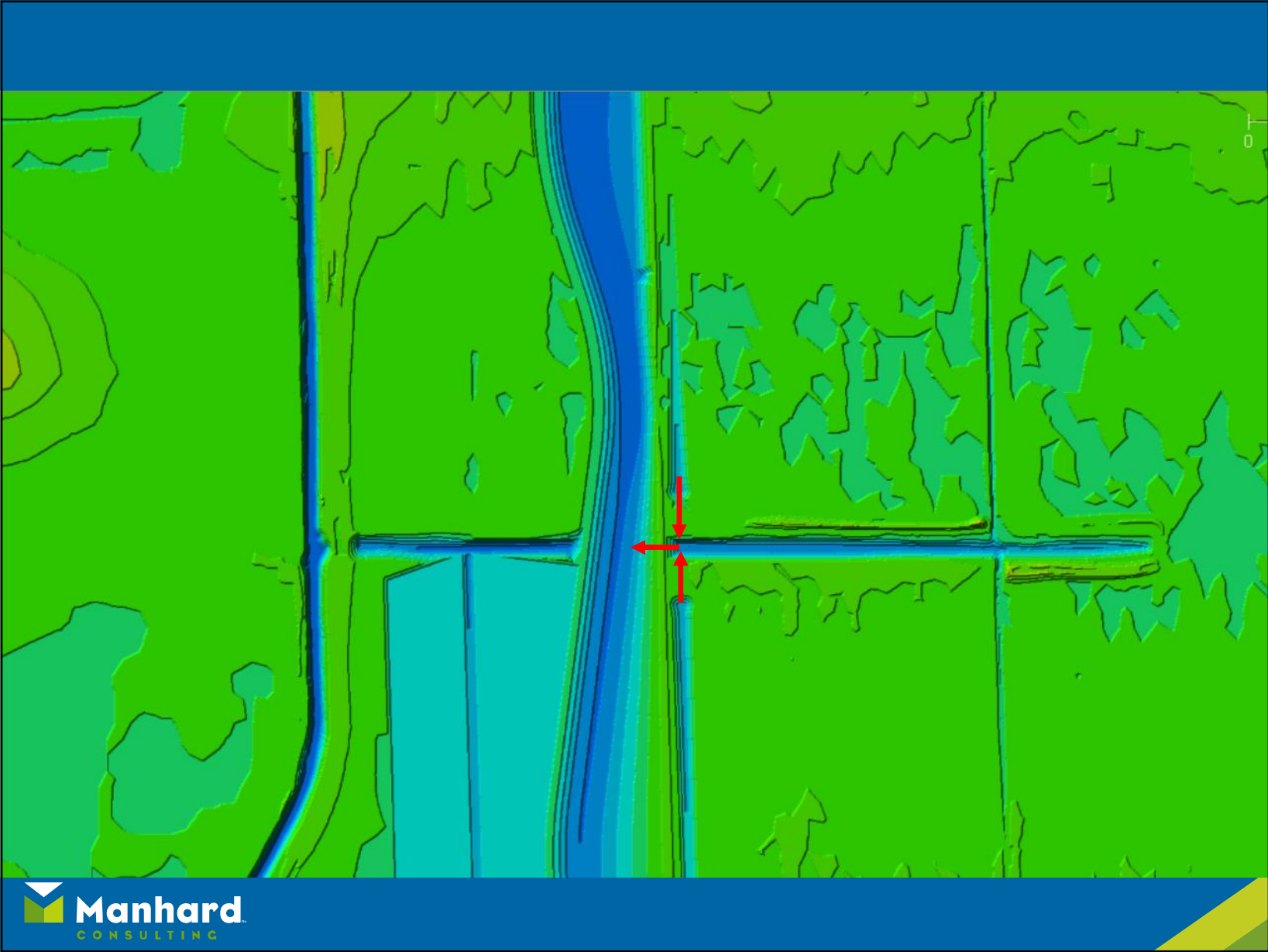




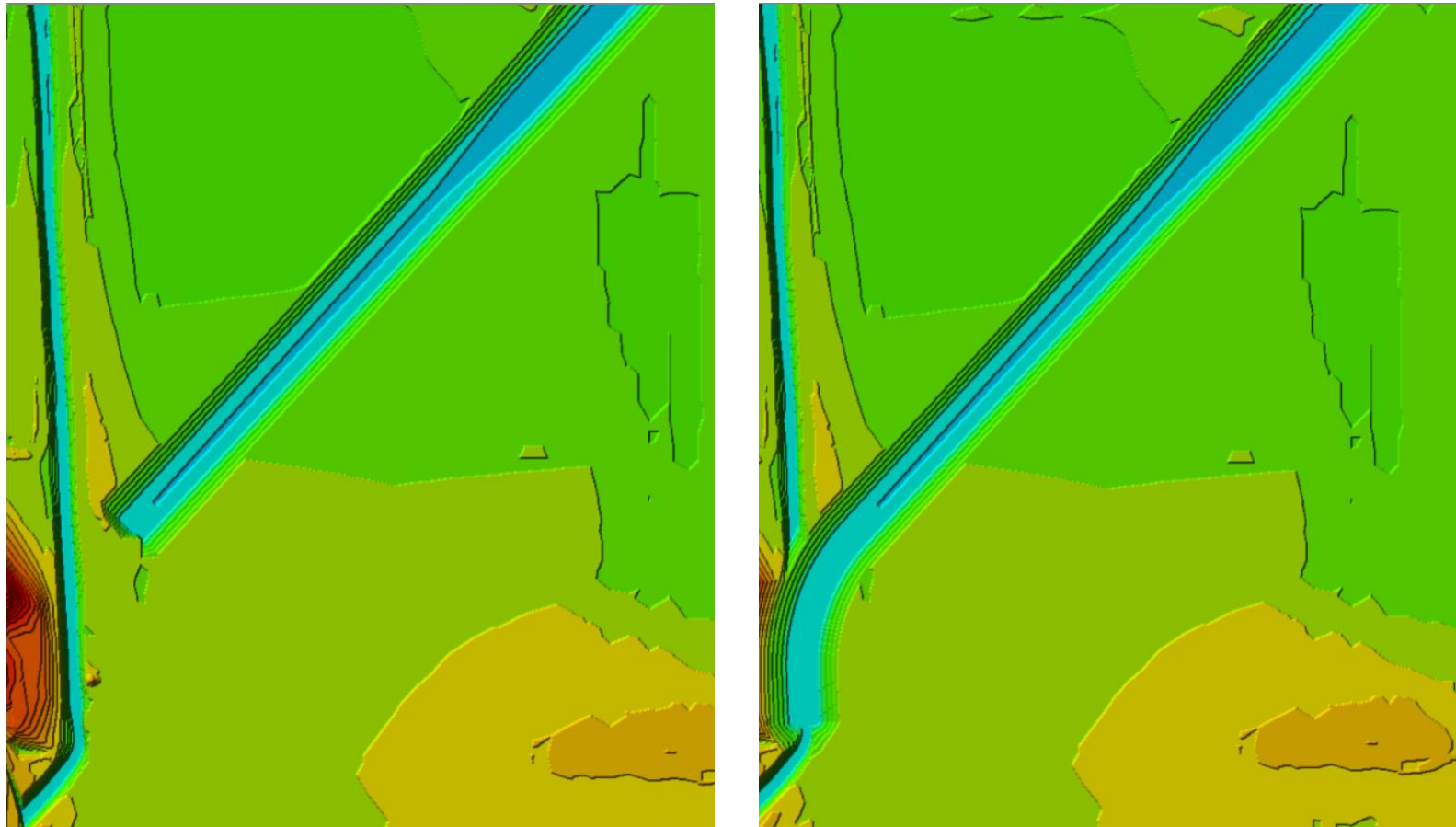
















QUESTIONS?