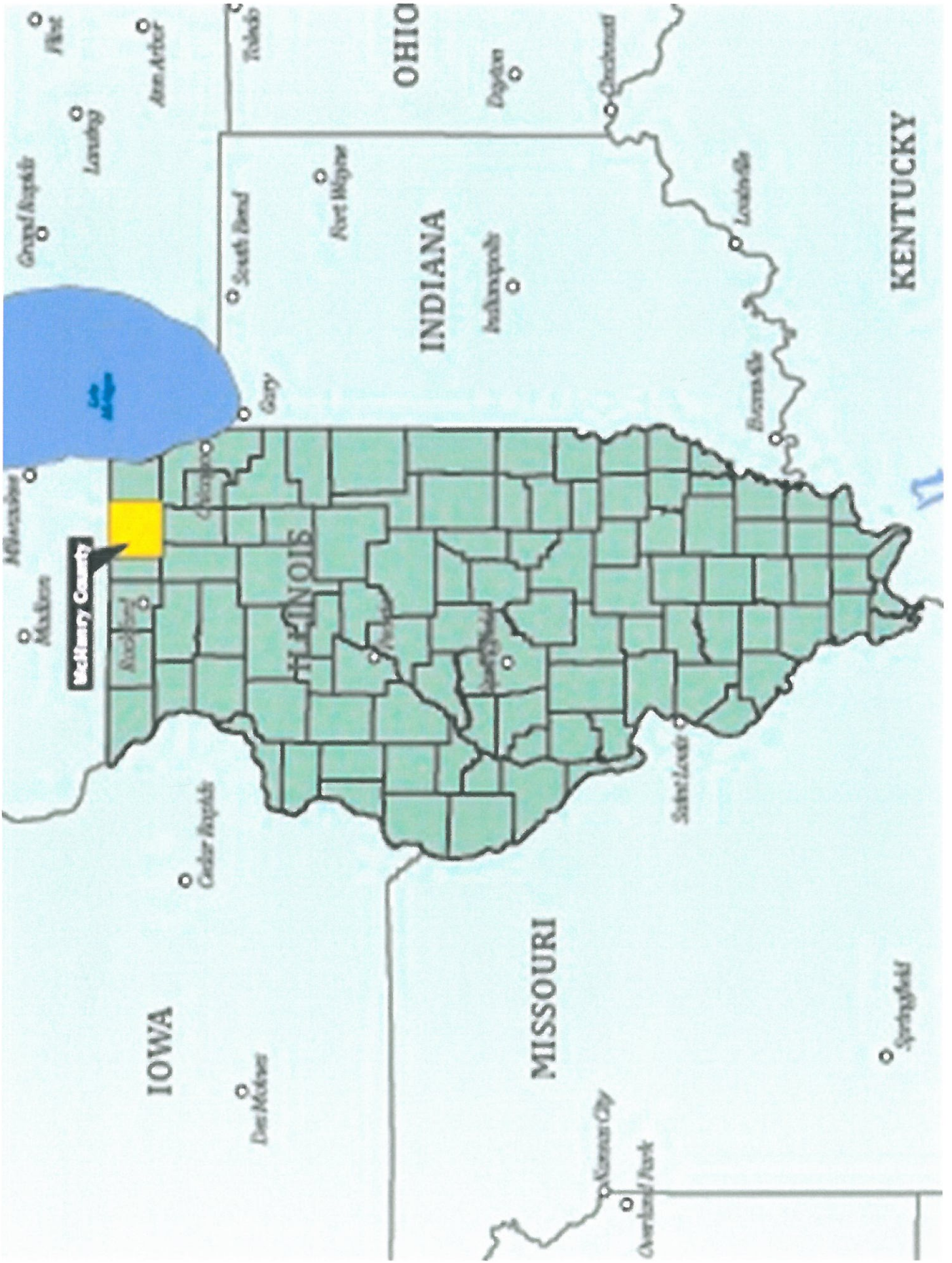


McHenry County's Streamlined Permitting Process



2012 IAFSM Annual Conference



McHenry County

IOWA

MISSOURI

OHIO

INDIANA

KENTUCKY

ILLINOIS

Des Moines

Kansas City

Overland Park

Springfield

St. Louis

Cedar Rapids

Flint

Lansing

Ann Arbor

Grand Rapids

South Bend

Fort Wayne

Dayton

Cincinnati

Indianapolis

Louisville

Evansville

Milwaukee

Madison

Aurora

Chicago

Gary

Peoria

Springfield





Stormwater Ordinance

Development:

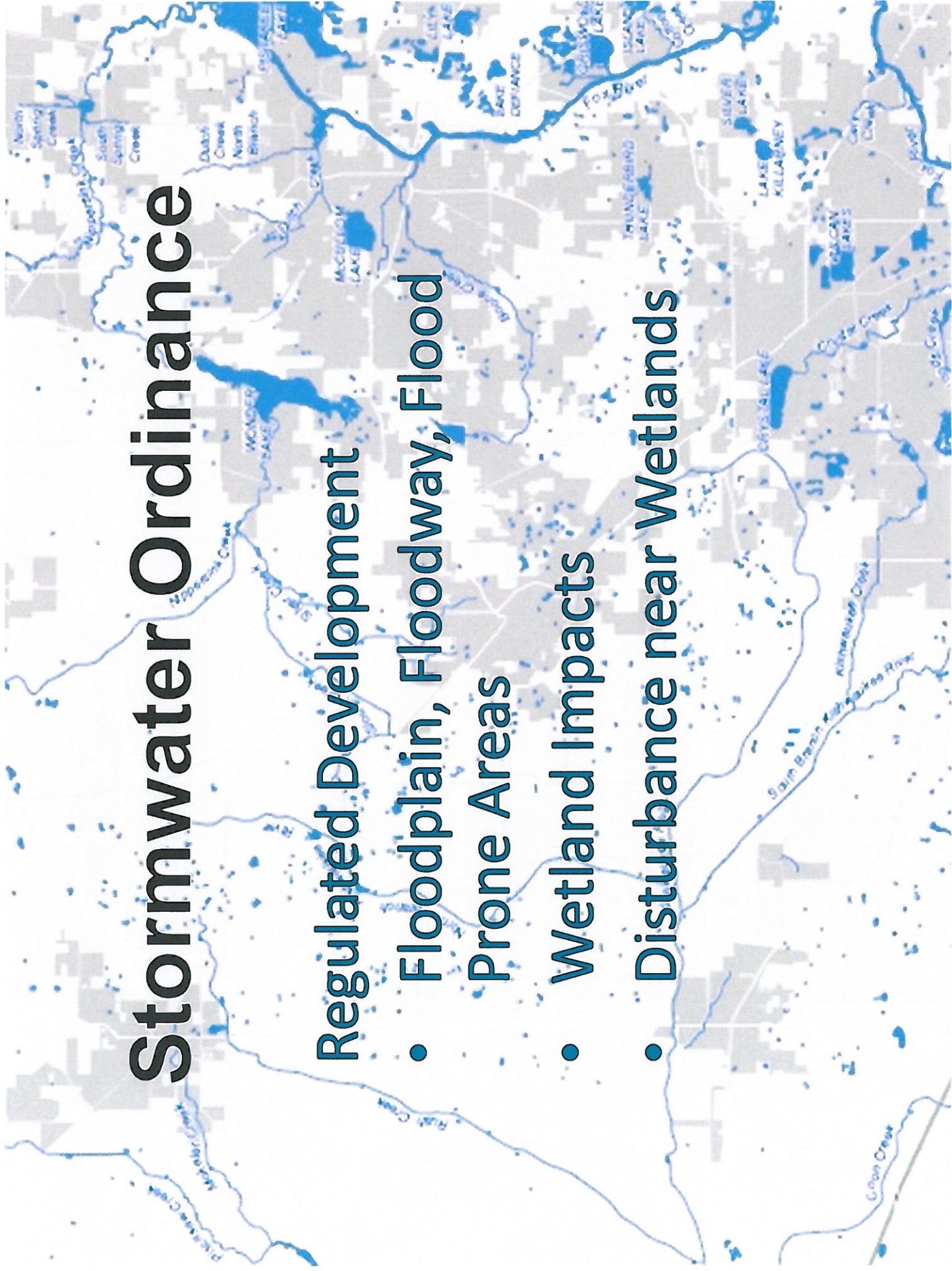
Any man-made change to real estate by a private party or public entity



Stormwater Ordinance

Regulated Development

- Floodplain, Floodway, Flood Prone Areas
- Wetland Impacts
- Disturbance near Wetlands



Stormwater Ordinance

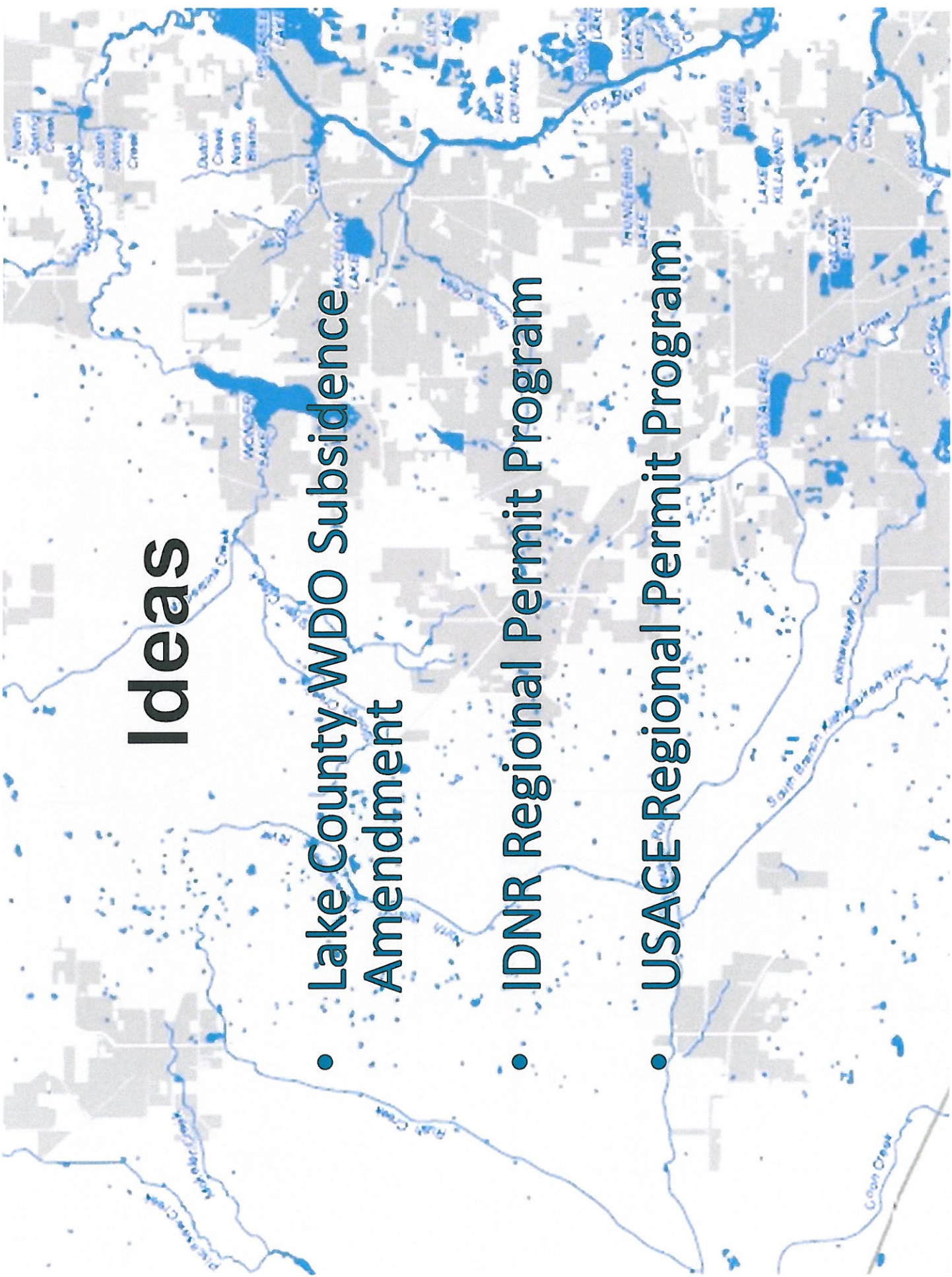


Additional Requirements for Special Management Areas

- Wetland Delineation
- Deed/Plat Restriction
- Compensatory Storage
- Plans prepared by a professional engineer

Ideas

- Lake County WDO Subsidence Amendment
- IDNR Regional Permit Program
- USACE Regional Permit Program



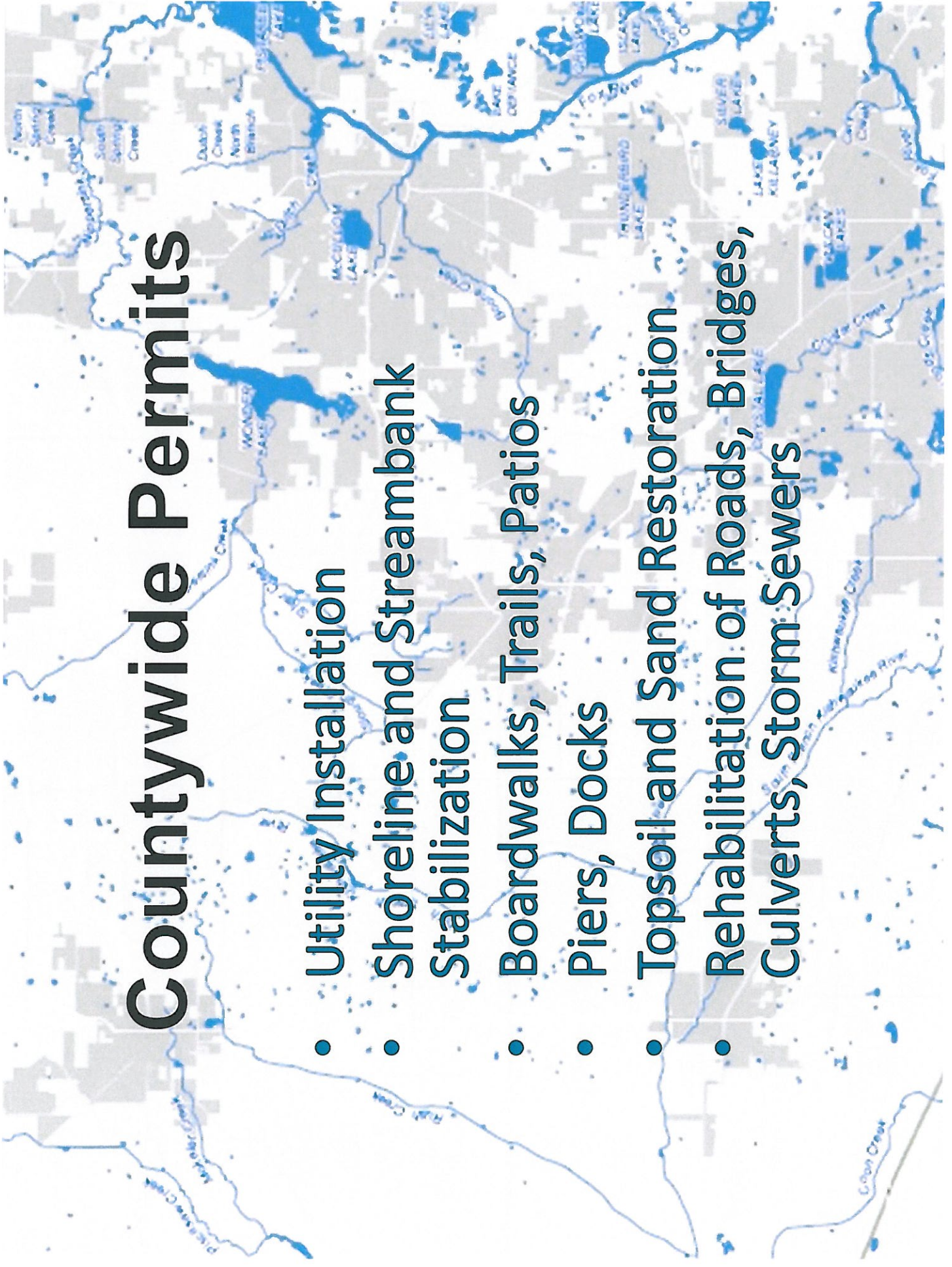
Steps Toward Adoption

- Technical Advisory Committee
- States Attorney's Office
- Stormwater Committee
- FEMA/IDNR
- Public Hearing
- County Board



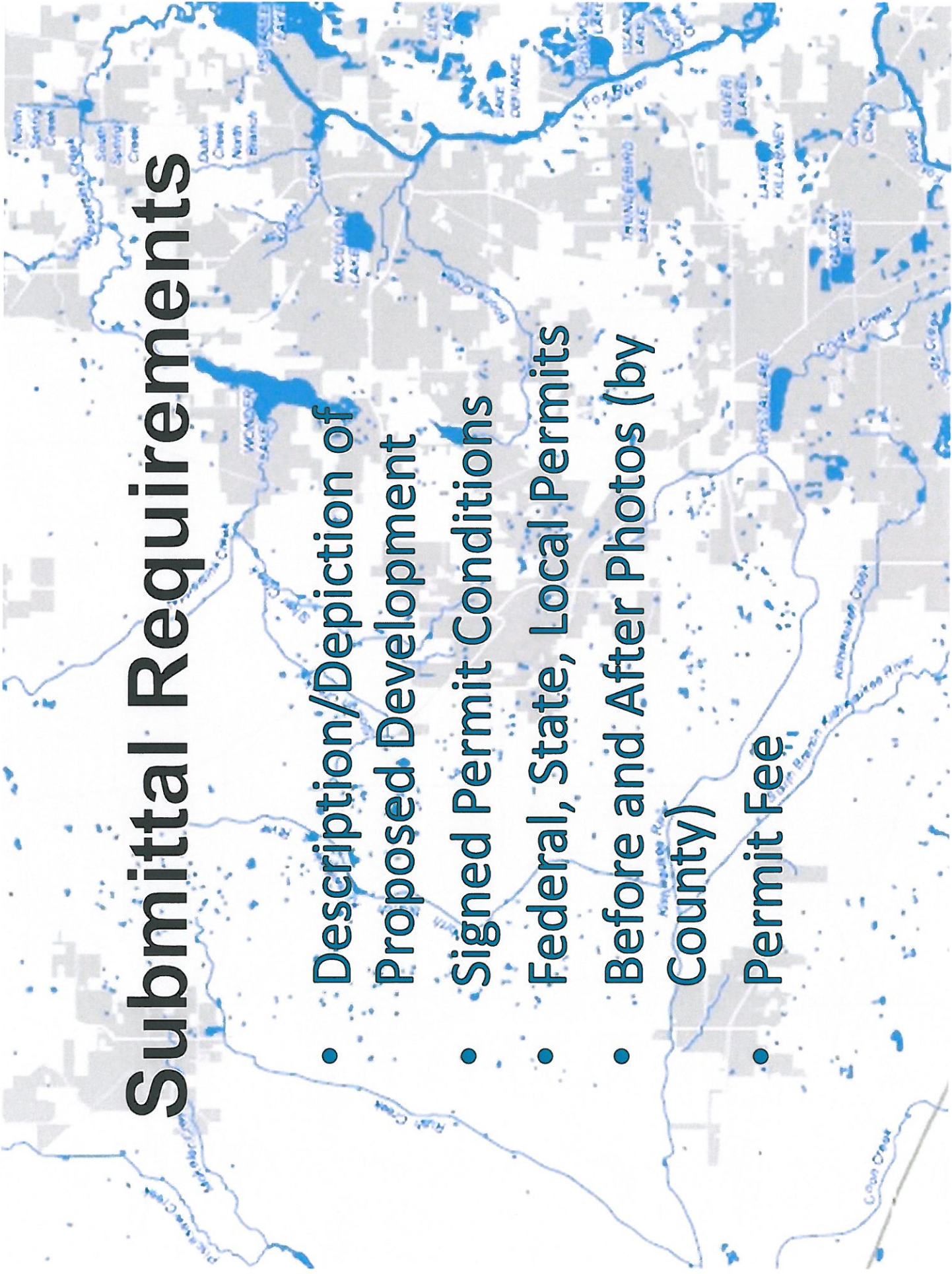
Countywide Permits

- Utility Installation
- Shoreline and Streambank Stabilization
- Boardwalks, Trails, Patios
- Piers, Docks
- Topsoil and Sand Restoration
- Rehabilitation of Roads, Bridges, Culverts, Storm Sewers

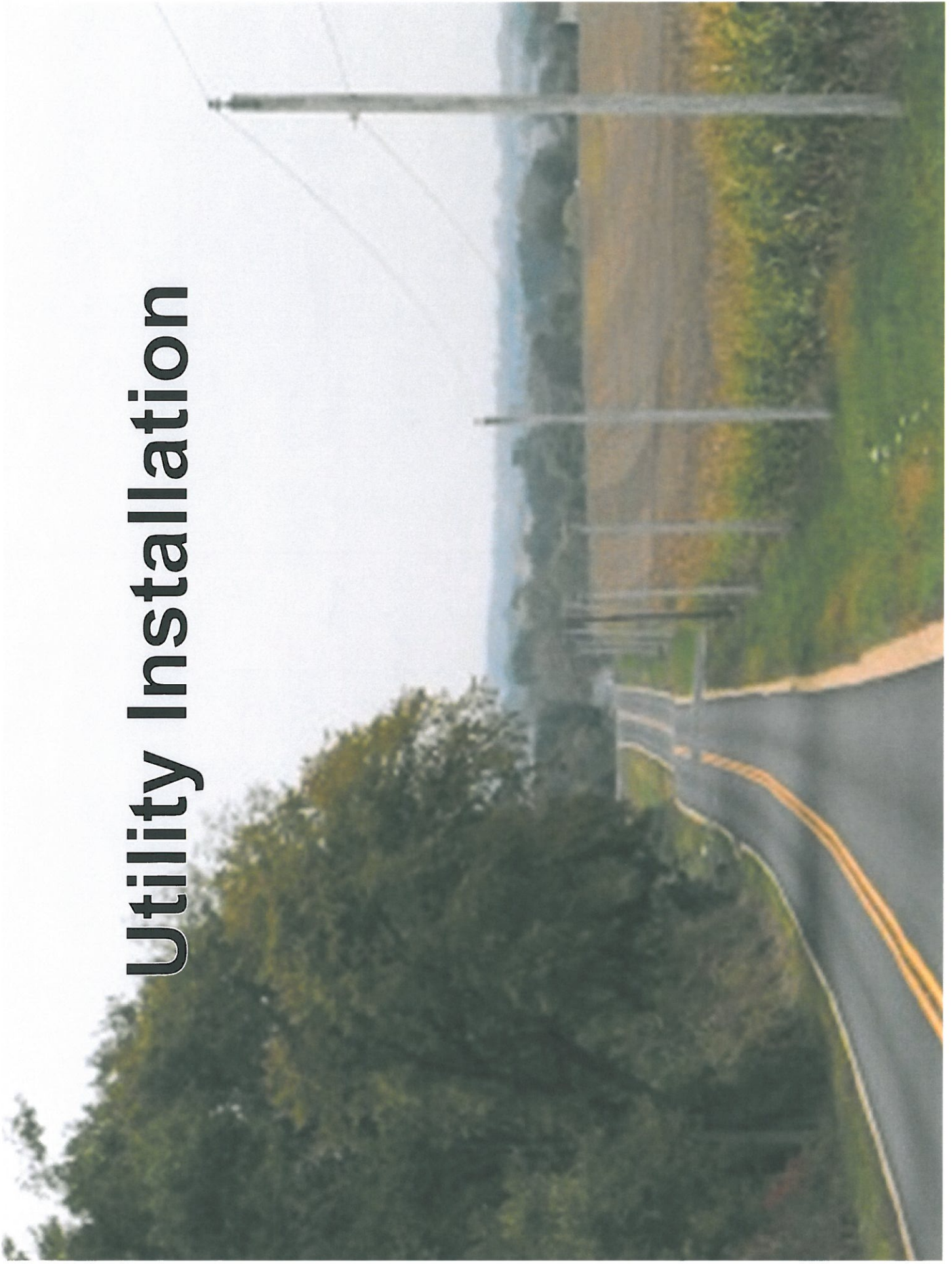


Submittal Requirements

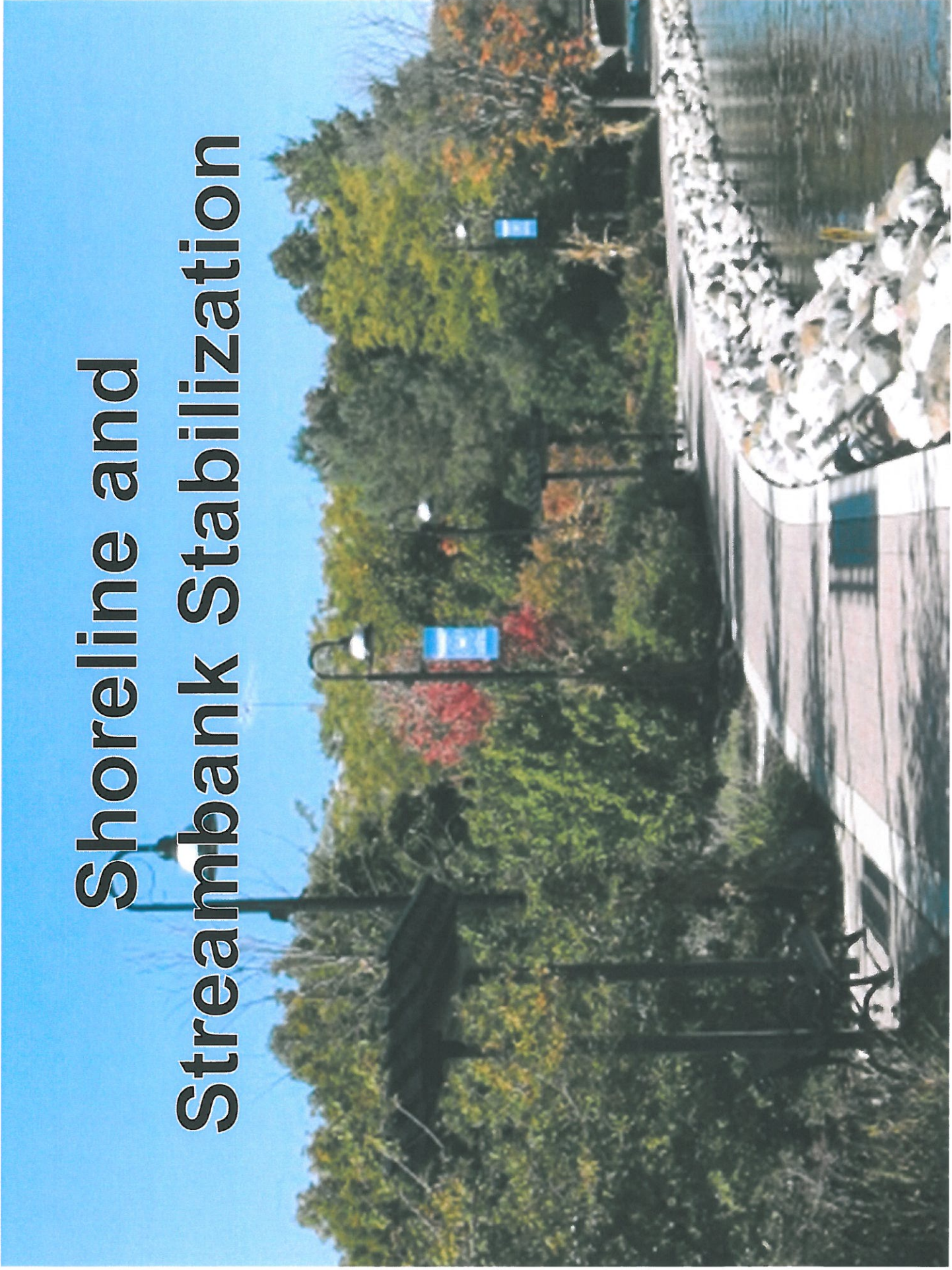
- Description/Depiction of Proposed Development
- Signed Permit Conditions
- Federal, State, Local Permits
- Before and After Photos (by County)
- Permit Fee



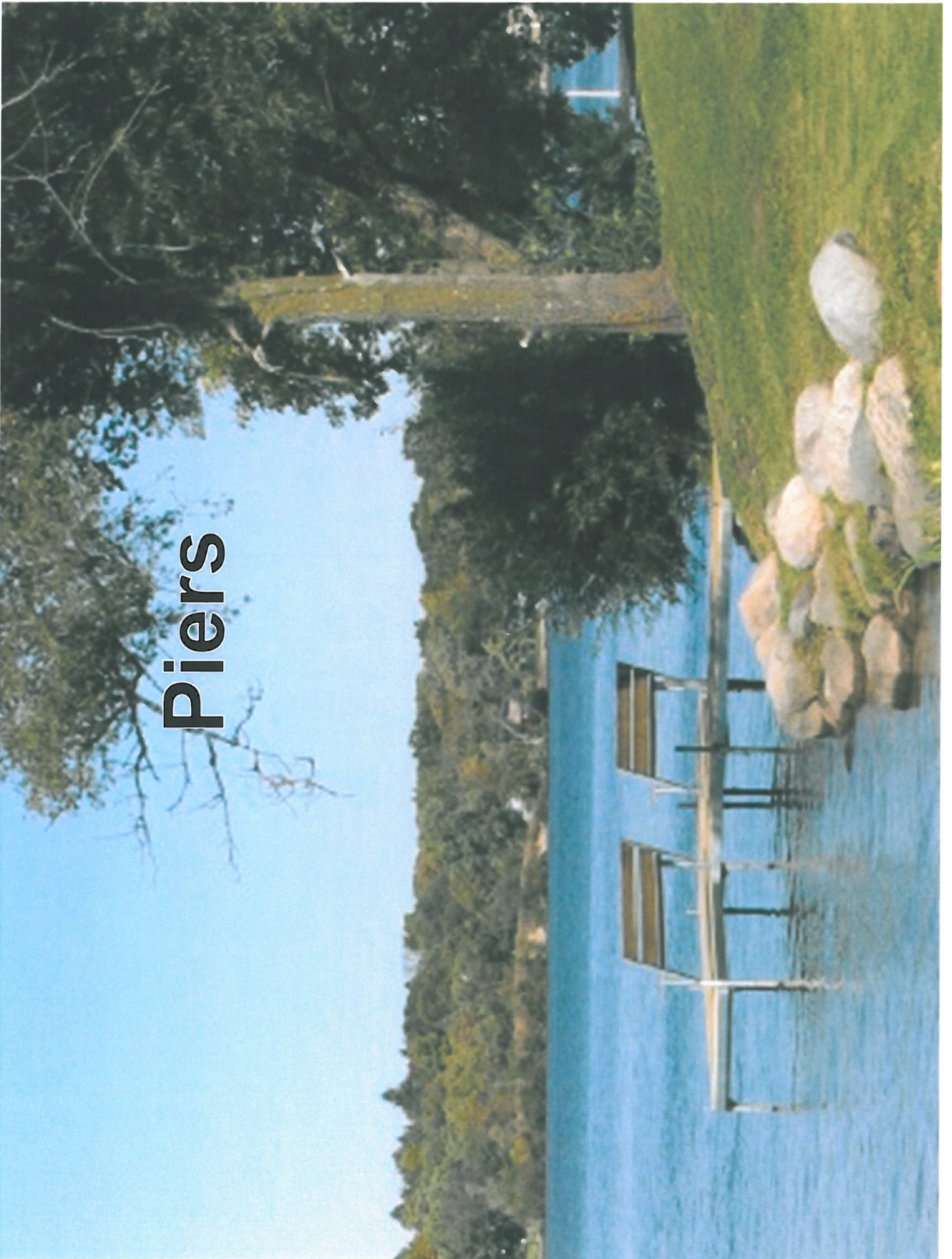
Utility Installation



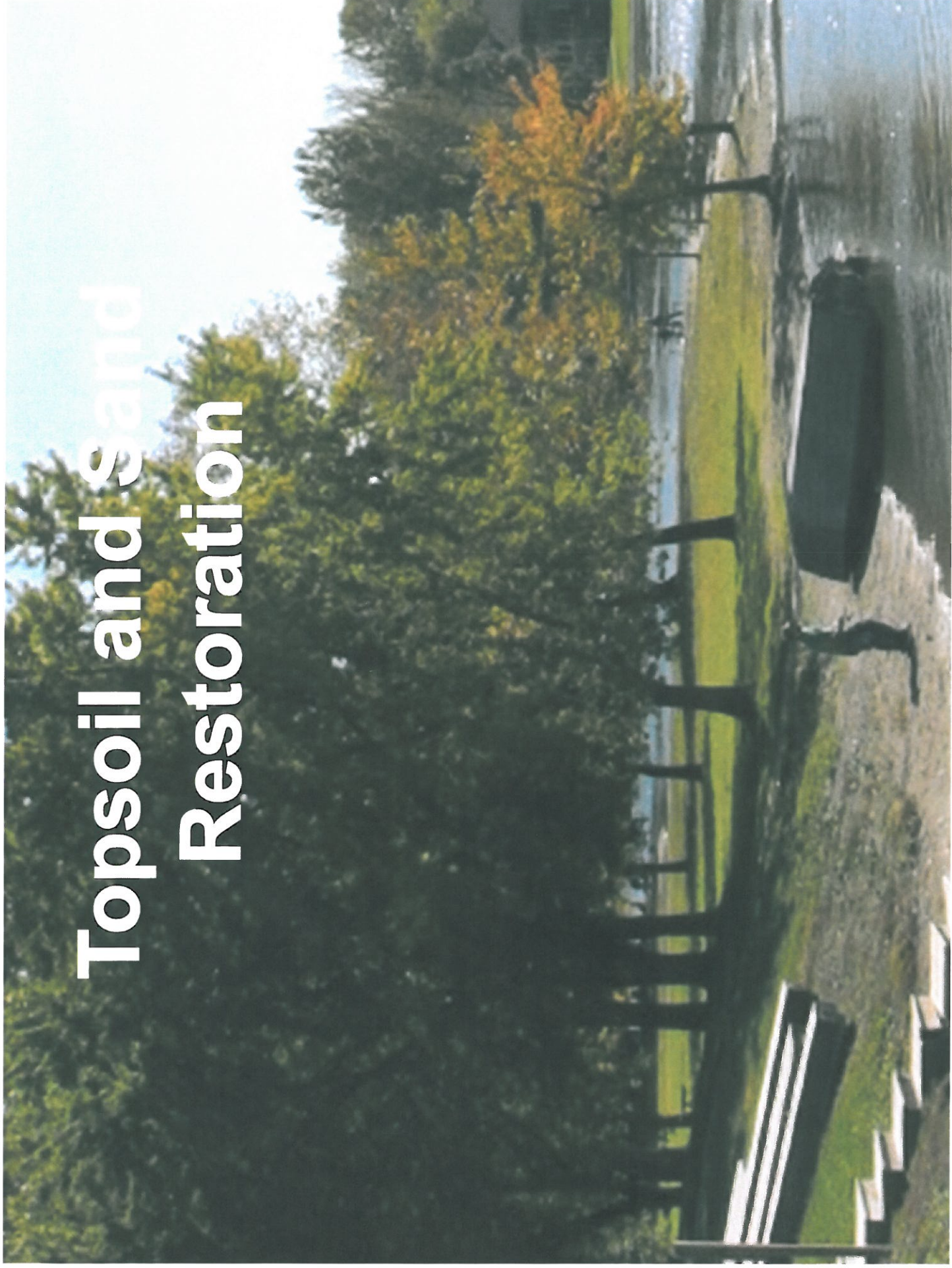
Shoreline and Streambank Stabilization



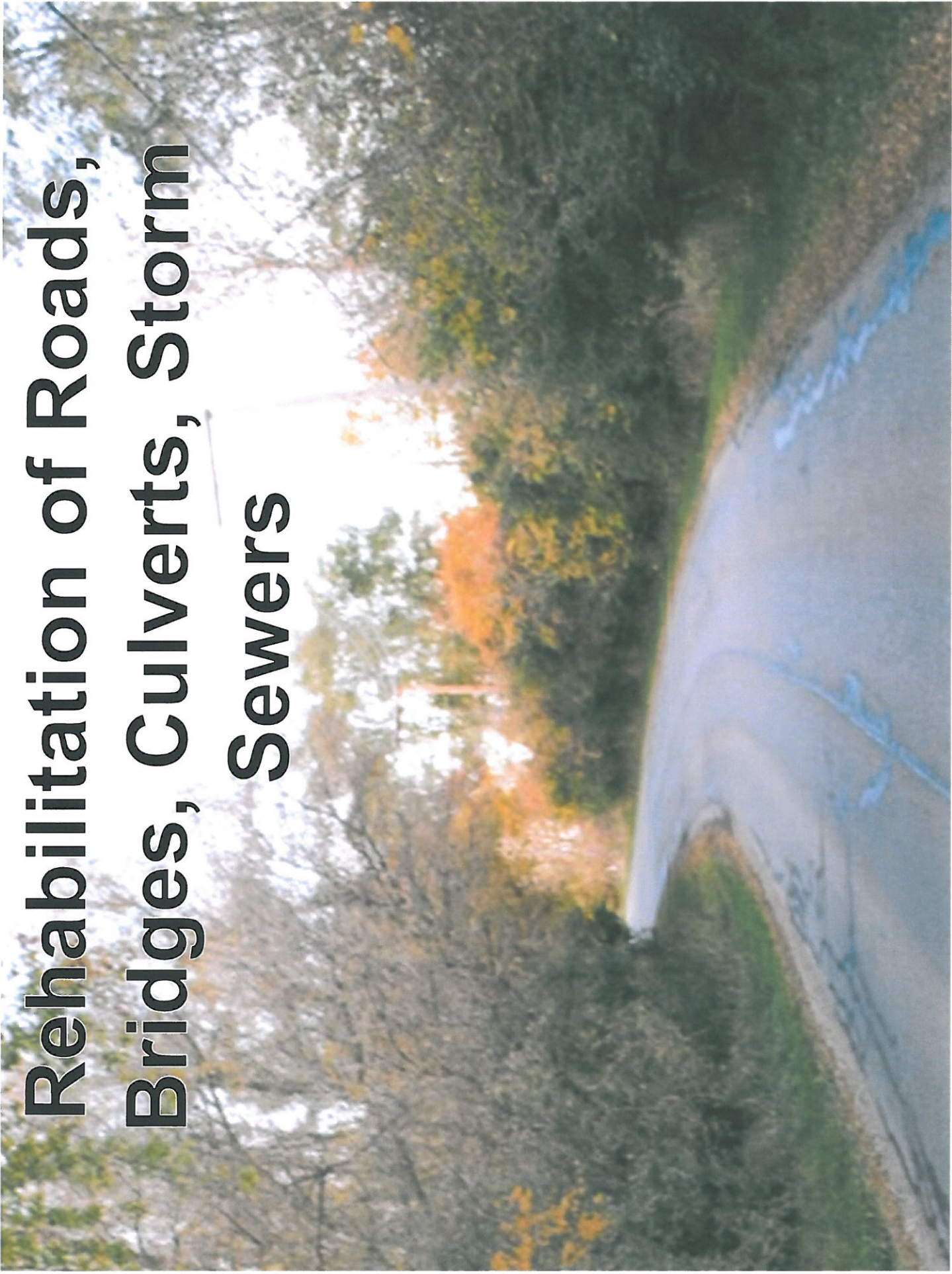
Piers



Topsoil and Sand Restoration



Rehabilitation of Roads, Bridges, Culverts, Storm Sewers



Lessons Learned

- Allow for more involvement from public/contractors to fit process better to projects
- After review process was complete, some conditions were more strict than a normal permit
- It is difficult to make language consistent with ordinance and other permits (temporary wetland impact)
- Decide how to deal with after-the-fact projects
- More communication is needed (office and field /reviewer owner)
- Requires more staff time/resources

Questions

Cory Horton, P.E., CFM, CPESC
McHenry County Chief Stormwater Engineer

clhorton@co.mchenry.il.us

(815) 334-4560

Mark Phipps, P.E., CFM, CPESC
Baxter & Woodman

mphipps@baxterwoodman.com

(815) 459-1260



Graphics from 2030 Plan (Thanks to Houseal Lavigne)