

Maintaining the Momentum

From Planning to Action to Achieve Resilience

Camden Arnold & Meirah Williamson



I ILLINOIS

Illinois State Water Survey

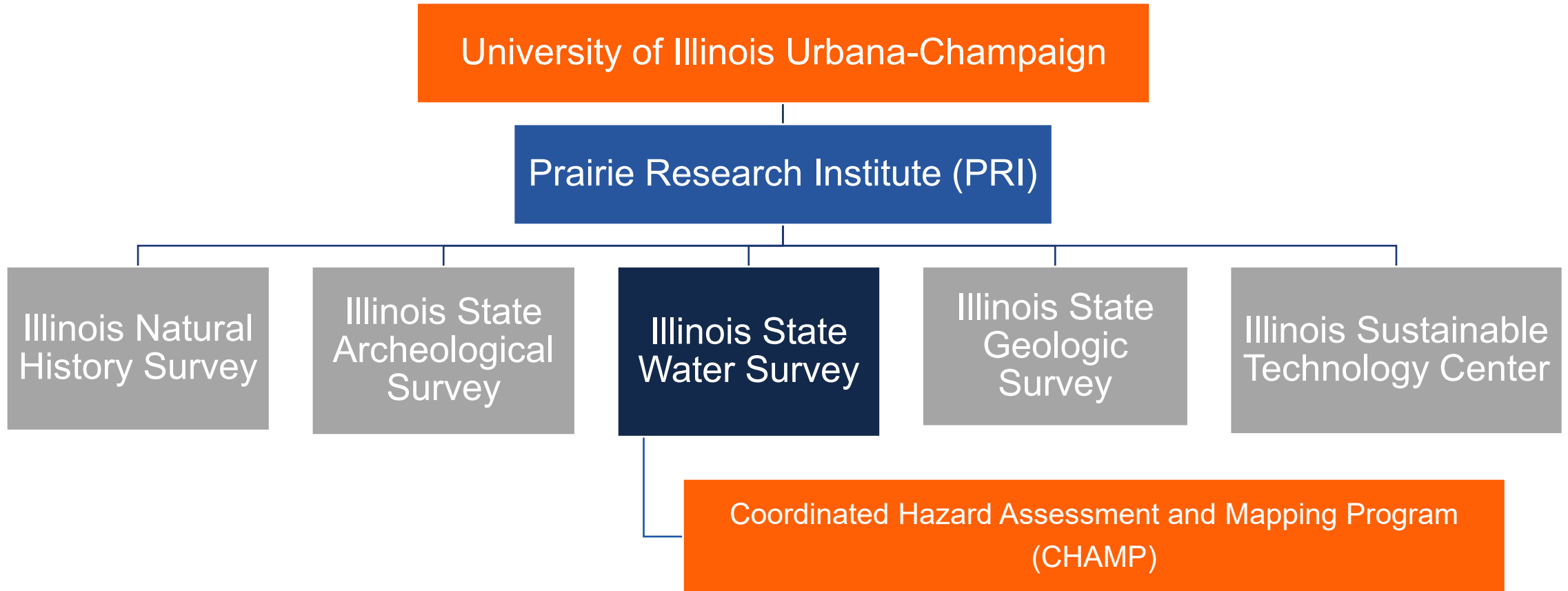
PRAIRIE RESEARCH INSTITUTE

IAFSM 2024

Peoria, Illinois

3/15/2024

Where are we from?



About Us



Camden Arnold
MA Community & Economic Development,
Western Illinois University
Hazard Mitigation Planner, ISWS

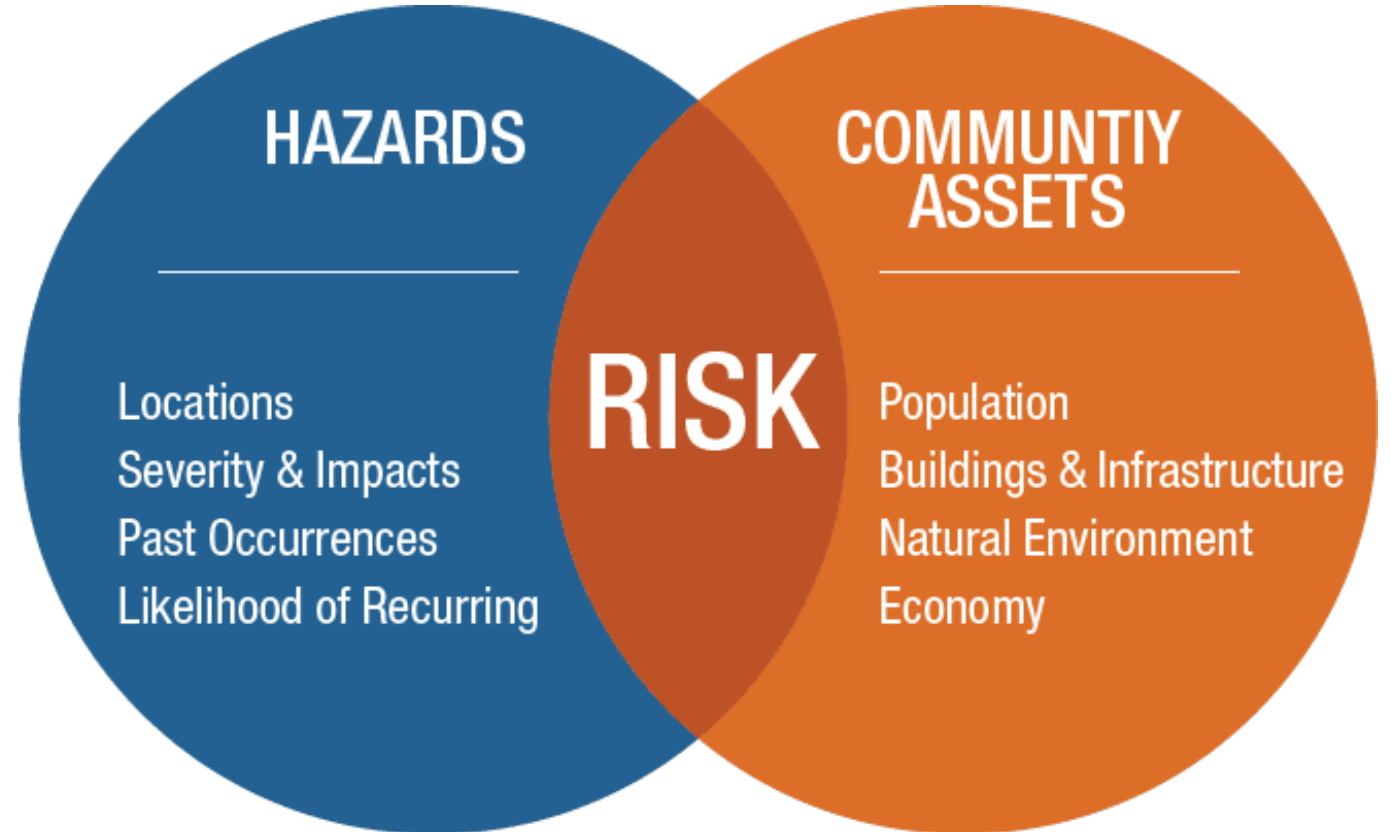


Meirah Williamson
MS Geography, University of Florida
GIS and Mitigation Analyst, ISWS



What is Hazard Mitigation Planning?

- Hazard mitigation planning reduces loss of life and property by minimizing the impact of disasters
- Mitigation plans are key to **breaking the cycle** of disaster damage and reconstruction

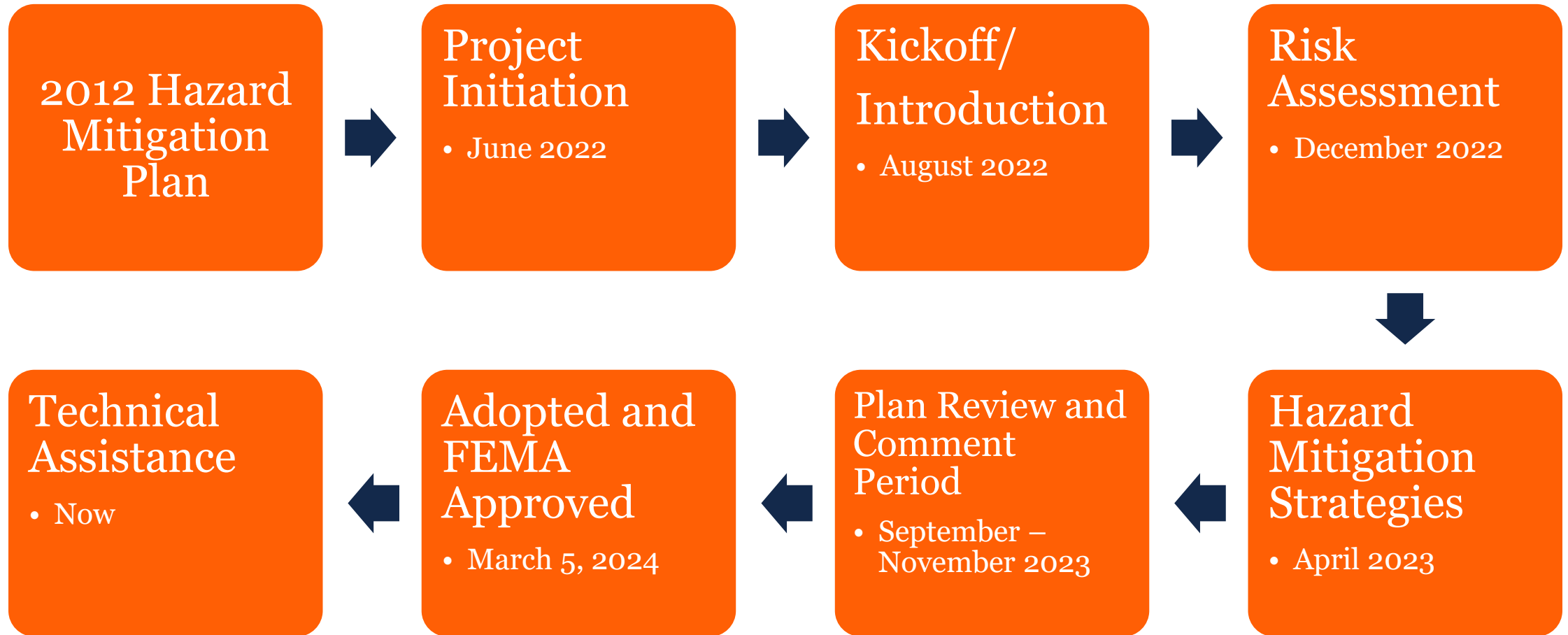


Why Mitigation?

- Preventing loss of life and injury
- Reducing property damage to homes and businesses
- Reducing business interruption and revenue loss
- Protecting cultural and historical assets
- Helping to lower emergency response and disaster recovery costs
- Reducing environmental damage
- Building a sense of place and peace of mind

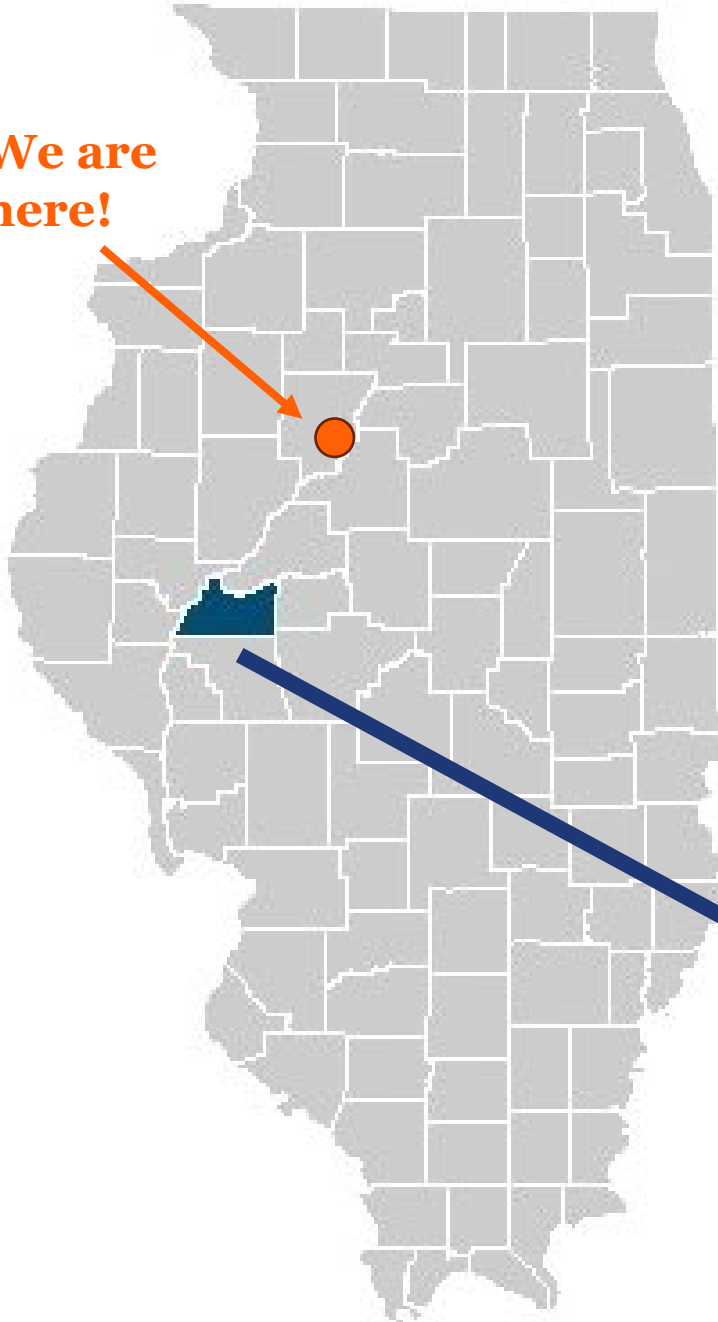


Cass County, Illinois: Timeline



Cass County, Illinois

We are here!



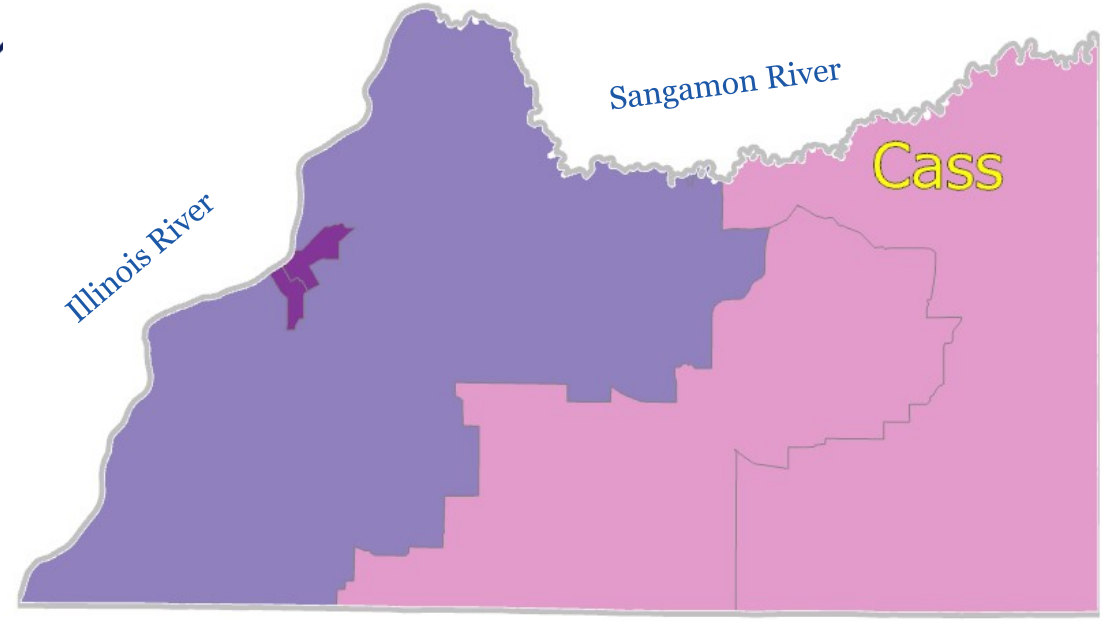
Community	2010	2020	Population Change, 2010-2020 (%)
Cass County	13,642	13,042	-4.4
Arenzville	409	367	-10.3
Ashland	1,333	1,218	-8.6
Beardstown	6,123	5,951	-2.8
Chandlerville	553	527	-4.7
Virginia	1,611	1,514	-6.0



Unique Characteristics



- Riverine flooding!
- Moderate social vulnerability and low riverine flood risk in eastern Cass County
- Moderate social vulnerability and moderate risk in western Cass County
- High social vulnerability and moderate flood risk in Beardstown



The Social Vulnerability Index (SVI) was created by the Centers for Disease Control (CDC) to identify communities that may need extra support in the face of a disaster. The Flood Factor is a metric developed by the First Street Foundation (FSF) to identify properties at risk of riverine flooding. This map highlights populations that are both vulnerable and at risk for riverine flooding at the census tract level. This information can be used by community organizations, emergency managers, and policymakers to address flood risk in their communities.

		Legend		
SVI		High		
Flood Factor		Low		
		Low	8	High

Unique Characteristics: Beardstown

- JBS
 - Pork production plant
 - 2,000 employees
 - 26 languages spoken
- 22% were born outside of the United States
- 21% of speak English “less than well”
- 37% speak a language other than English at home
- Communication and cultural barriers



Community Champions



Illinois Extension

UNIVERSITY OF ILLINOIS URBANA-CHAMPAIGN

- Cass County Emergency Services & Disaster Agency
 - Roger Lauder
- Cass County Board Members
 - Ramona Douglass
- University of Illinois Extension
 - Dustin Fritsche



I Cass County



Mitigation Goals

- Goal 1. Lessen the impacts of hazards to new and existing infrastructure
- Goal 2. Create new or revise existing plans/maps for Cass County
- Goal 3. Develop long-term strategies to educate Cass County residents on the hazards affecting their county
- Goal 4. Protect life and livelihoods in Cass County



Mitigation Projects



Mitigation Projects



- Improve/develop/enhance emergency communication to the general public; explore and utilize every means of contact with the general public
- Revamp, reorganize, and revitalize the Local Emergency Planning Commission (LEPC)
- Join the Community Rating System (CRS)
- Buy property (house) in order to widen a dangerous, sharp corner to reduce accidents. This is a main truck and school bus route
- Work with local school, churches, and businesses for shelter and food to serve people in need during emergencies
- Develop a flood evacuation plan for the City of Beardstown based on the Sid Simpson Levee Breach Analysis compiled by the US Army Corps of Engineers
- Enhance internet hotspots throughout the community for use during emergencies



Funding Success Story!

- Emergency warning systems were a **high** priority in every community
 - ❑ Affordable
 - ❑ Multilingual (Beardstown)
 - ❑ Mobile app/opt-in not required
- Genasys Emergency Warning System
 - ✓ ~\$3,000/year
 - ✓ Can broadcast in multiple languages
 - ✓ Emergency notifications are sent to every device in the area
- Brought before the county board in February; vote scheduled for March
- “We could not get these conversations started before we began working on this hazard mitigation plan”



Community Rating System (CRS)

- CRS → potential project idea?
- The CRS is a voluntary incentive program that encourages communities to go above and beyond minimum NFIP standards

Community	Policy holders	Policy holders in SFHA	Population
Cass County	36	6	13,042
Arenzville	0	0	367
Ashland	5	4	1,218
Beardstown	78	2	5,951
Chandlerville	21	20	527
Virginia	5	3	1,514



Small Communities in the CRS

- 150 CRS communities (pop. < 5,000)
 - 18 CRS communities – Class 5
- Class 9
 - City of Metropolis (pop. 5,969)
 - Village of Roxana (pop. 1,454)
- Class 6
 - Jersey County (pop. 21,512)
- Class 5
 - ?????

CRS Class	CRS Discount
1	45%
2	40%
3	35%
4	30%
5	25%
6	20%
7	15%
8	10%
9	5%
10	0%



What's Next?



- Increase community knowledge regarding their flood risk
 - Repetitive loss properties
 - Open space in Special Flood Hazard Areas (SFHA)
 - Outreach material
- Revamp, reorganize, and revitalize Local Emergency Planning Commission (LEPC)
- Yearly hazard mitigation plan check-ins



Mitigation & Planning

Website

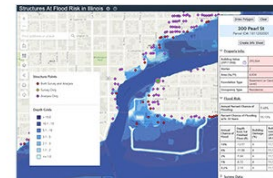


Hazard Mitigation Plans



The essential steps of hazard mitigation – hazard identification, vulnerability analysis, and creating a hazard mitigation strategy – are addressed in the creation of the local hazard mitigation plan. The Illinois State Water Survey (ISWS) collaborates with Illinois counties, regional planning commissions, and the University of Illinois Extension to create and update local hazard mitigation plans.

Structures At Flood Risk (SAFR)



SAFR is the product of collaboration between the Illinois Department of Natural Resources (IDNR) and the Illinois State Water Survey (ISWS). It contains data about structures in Illinois and their flood risk. SAFR is password-protected. The intended audiences are state and local officials and agency staff; in particular, floodplain managers, mitigation officers, and city planners.

Buyouts Database



The Illinois Buyouts Database is the product of collaboration between the Illinois Department of Natural Resources (IDNR) and the Illinois State Water Survey (ISWS). It contains data about structures in Illinois that have been mitigated through acquisition. The Buyouts Database web map is password-protected. The intended audiences are state and local officials and agency staff; in particular, floodplain managers, mitigation officers, and city planners.

What Is Mitigation?



Hazard Mitigation is defined as any sustained action taken to reduce or eliminate the long-term risk to life and property from hazard events. It is an on-going process that occurs before, during, and after disasters and serves to break the cycle of damage and repair in hazardous areas.

Questions?

Contact Information:

Meirah Williamson, GIS and Mitigation Analyst • Illinois State Water Survey, meirahw@illinois.edu
Camden Arnold, Hazard Mitigation Planner • Illinois State Water Survey, carnold3@illinois.edu

Visit our website: <https://www.illinoisfloodmaps.org/mitigation.aspx>