

Mapping the Wabash River Floodplain: Whence This Historic Valley?

Zoe Zaloudek, GISP, CFM

IAFSM 2024 Annual Conference

3/12/2024



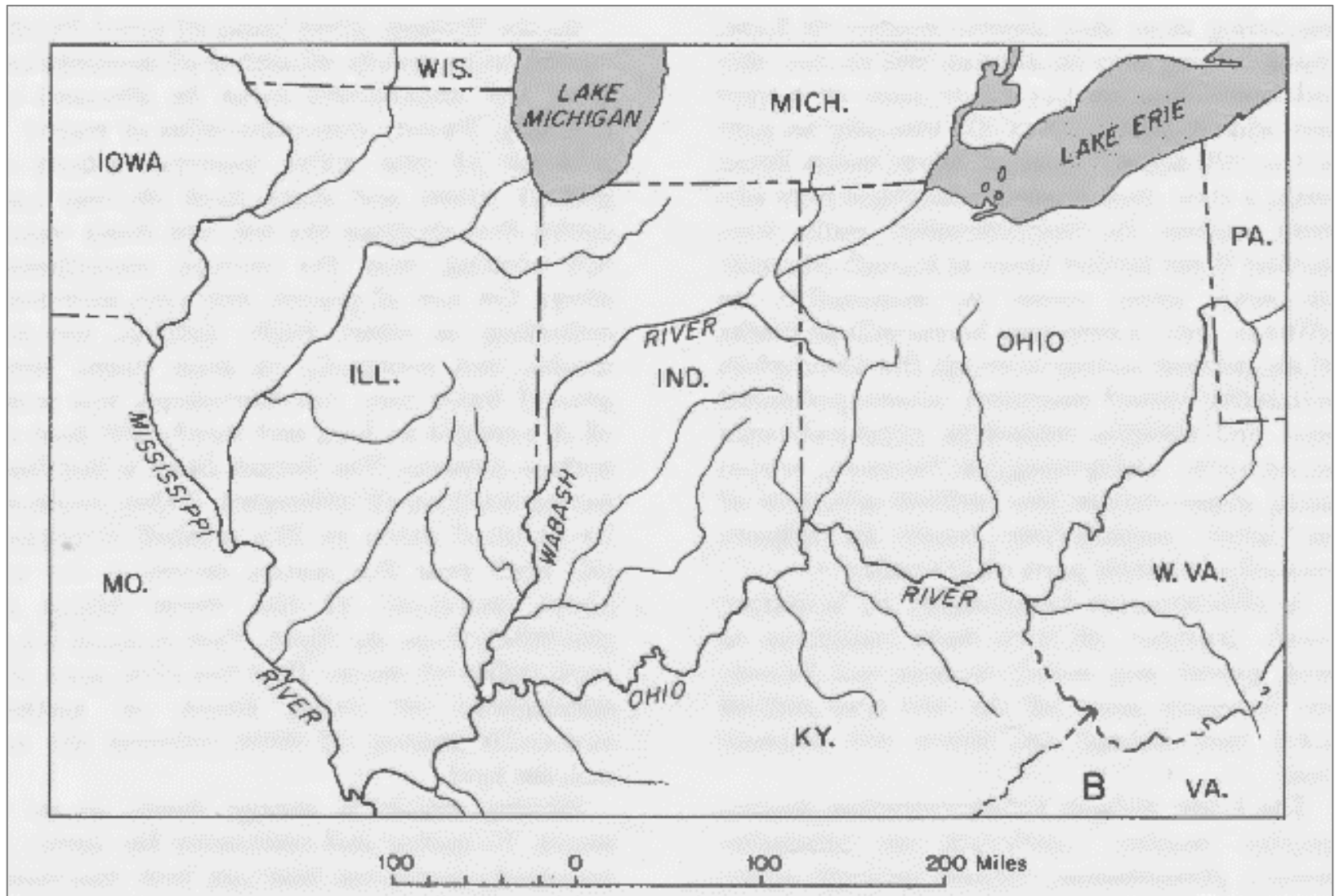
Illinois State Water Survey

PRAIRIE RESEARCH INSTITUTE

Overview

- The Wabash River and cutoffs
- The effective model
- The new model
- Floodplain delineation process

The Wabash River

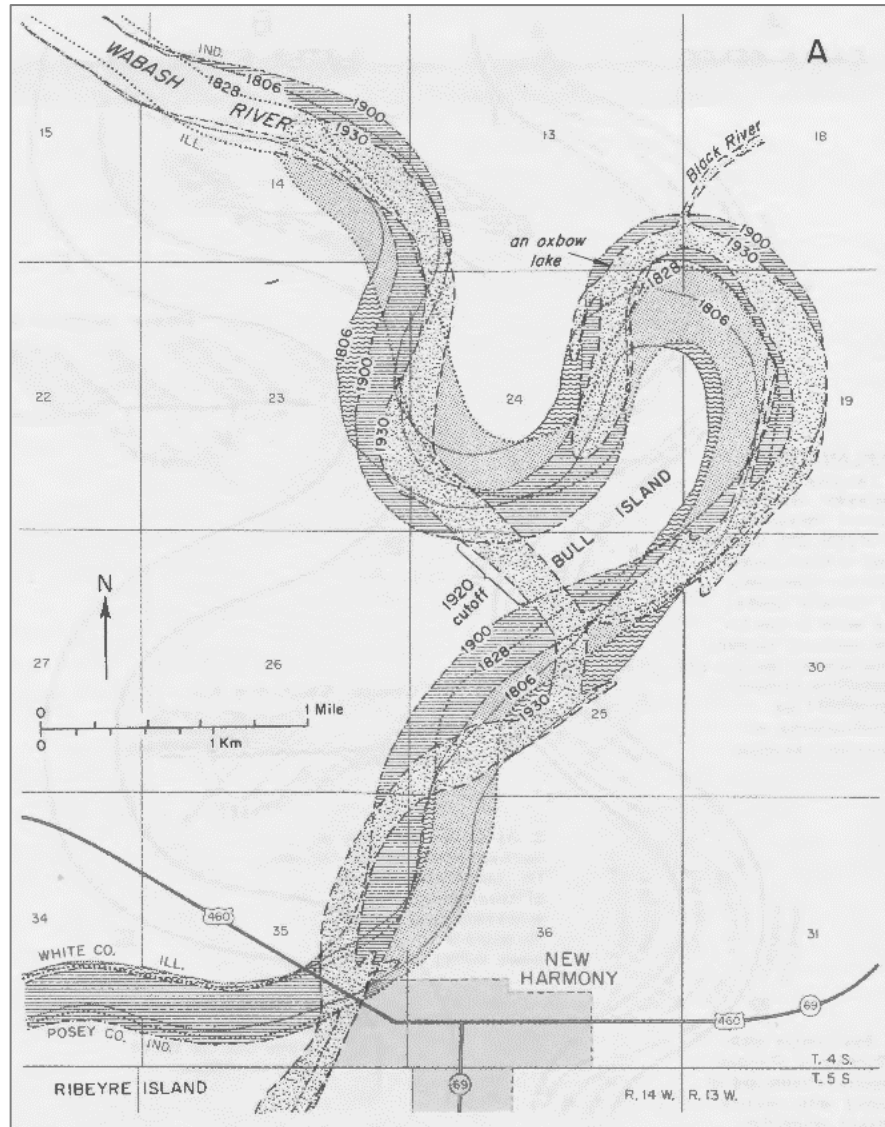


The Wabash River

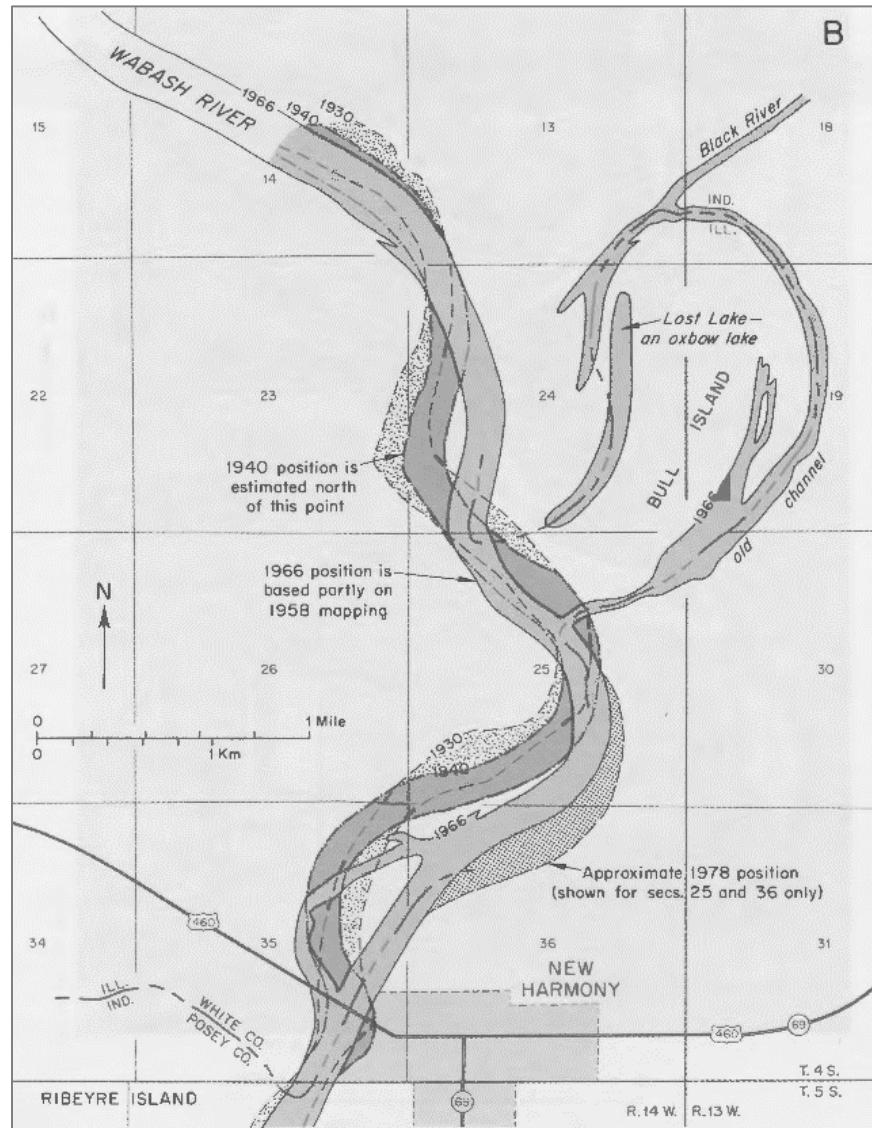


FRONTISPIECE

The Wabash River



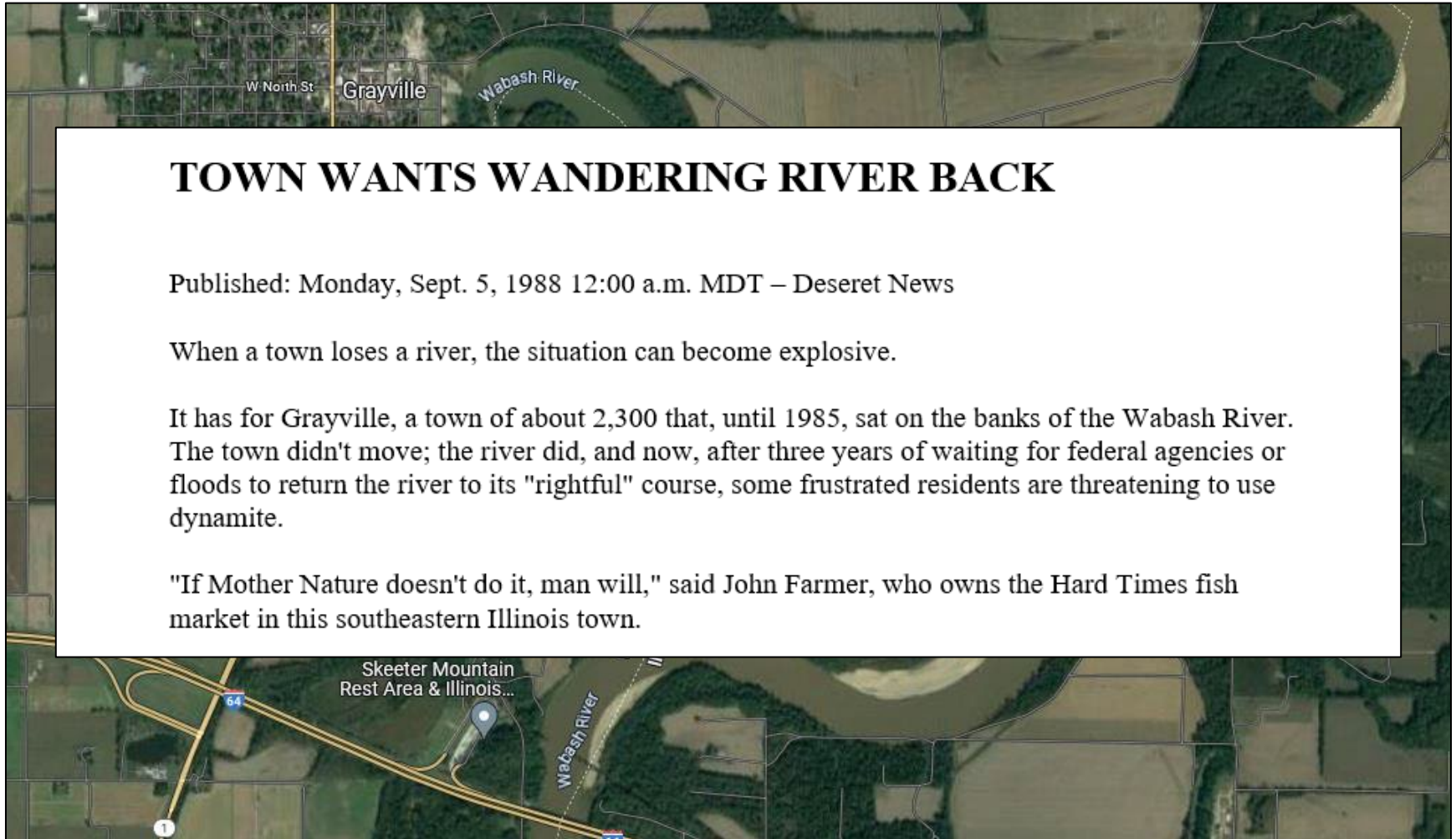
The Wabash River



The Wabash River



The Wabash River



TOWN WANTS WANDERING RIVER BACK

Published: Monday, Sept. 5, 1988 12:00 a.m. MDT – Deseret News

When a town loses a river, the situation can become explosive.

It has for Grayville, a town of about 2,300 that, until 1985, sat on the banks of the Wabash River. The town didn't move; the river did, and now, after three years of waiting for federal agencies or floods to return the river to its "rightful" course, some frustrated residents are threatening to use dynamite.

"If Mother Nature doesn't do it, man will," said John Farmer, who owns the Hard Times fish market in this southeastern Illinois town.

Fort LaMotte



Making DFIRMs (late 2000s)



The Effective Model



Map of area reproduced by Mississippi Basin Model and drainage basin of Mississippi River

The Effective Model

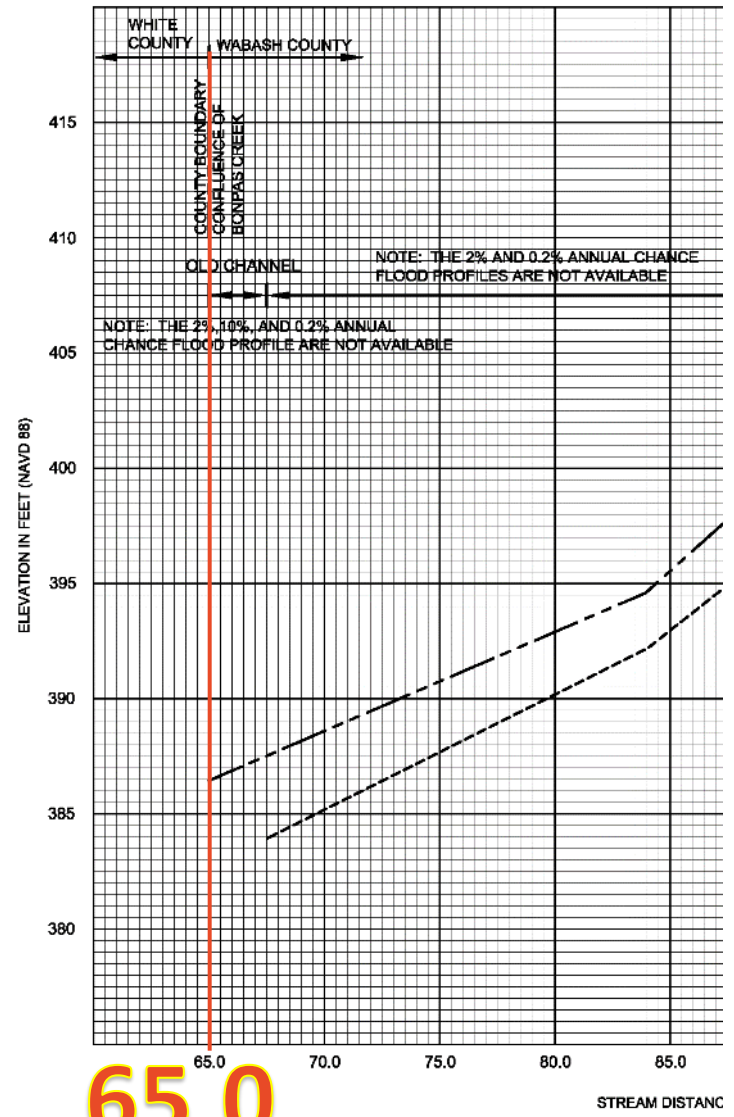
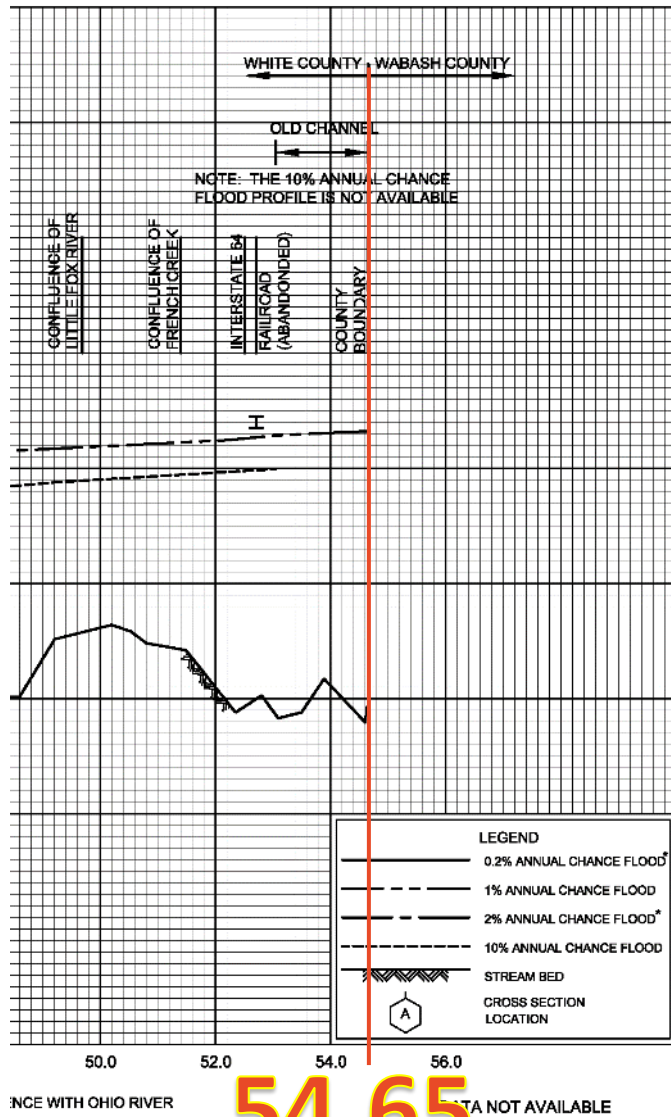


The Effective Model

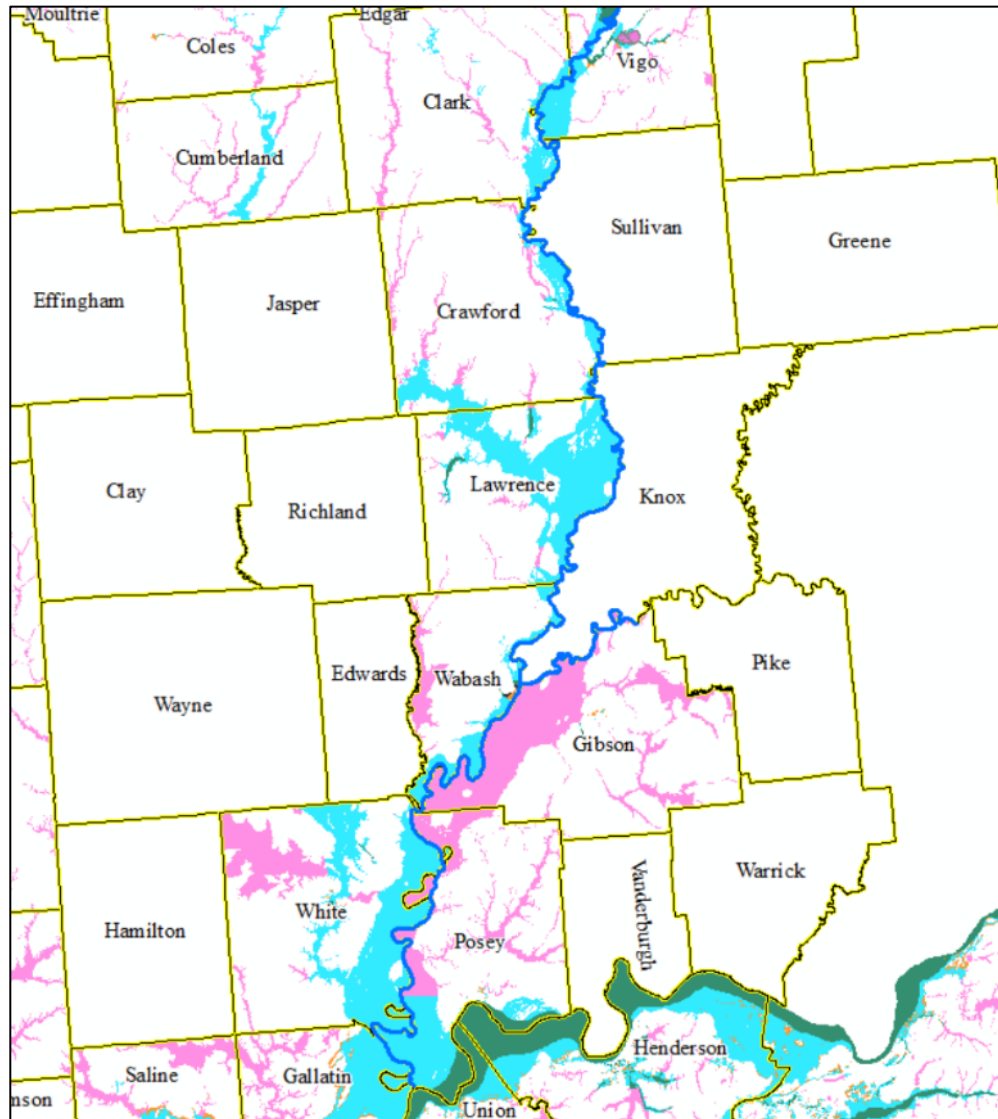


Completed Mississippi Basin Model

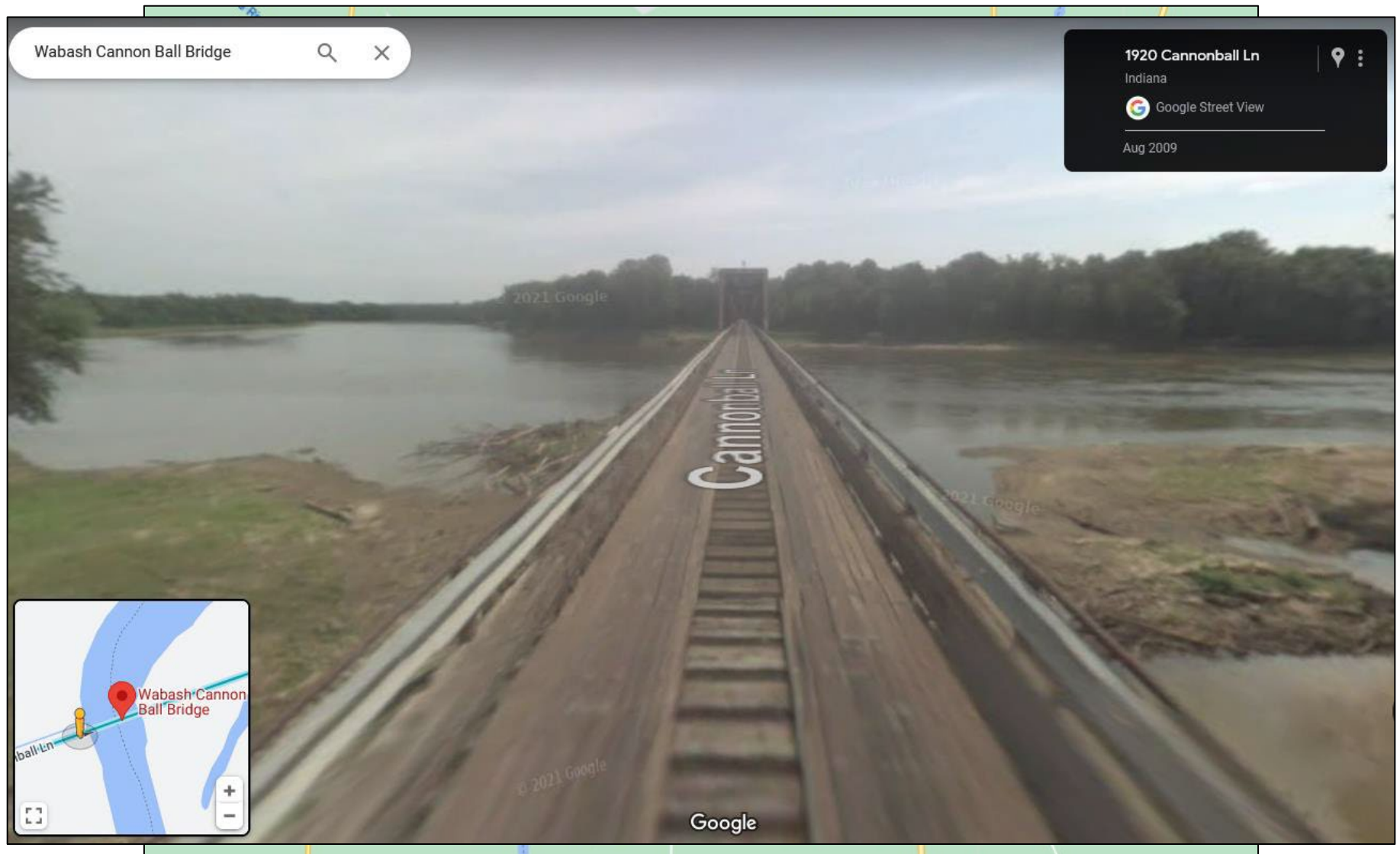
The Effective Model



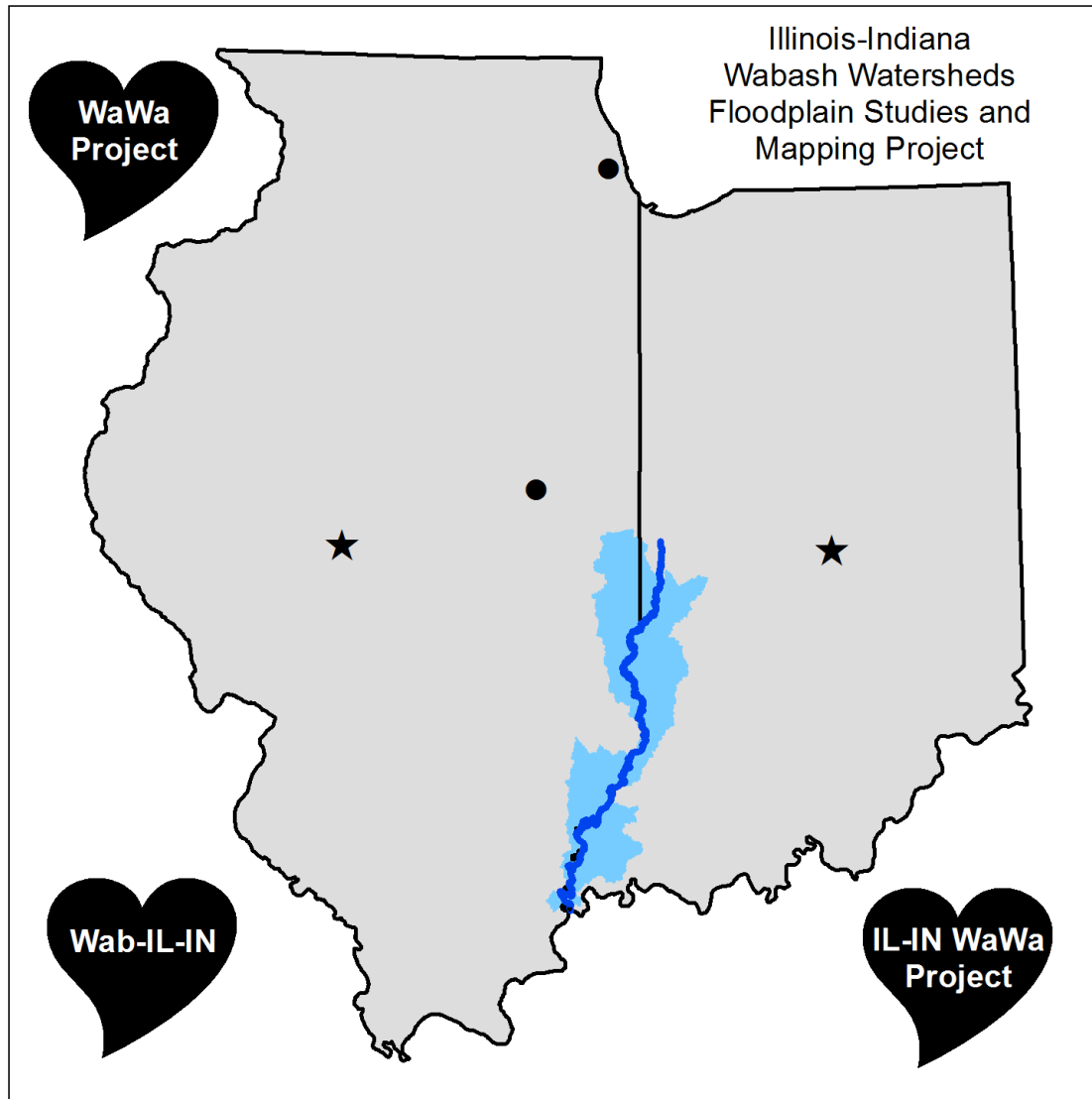
The Effective Model



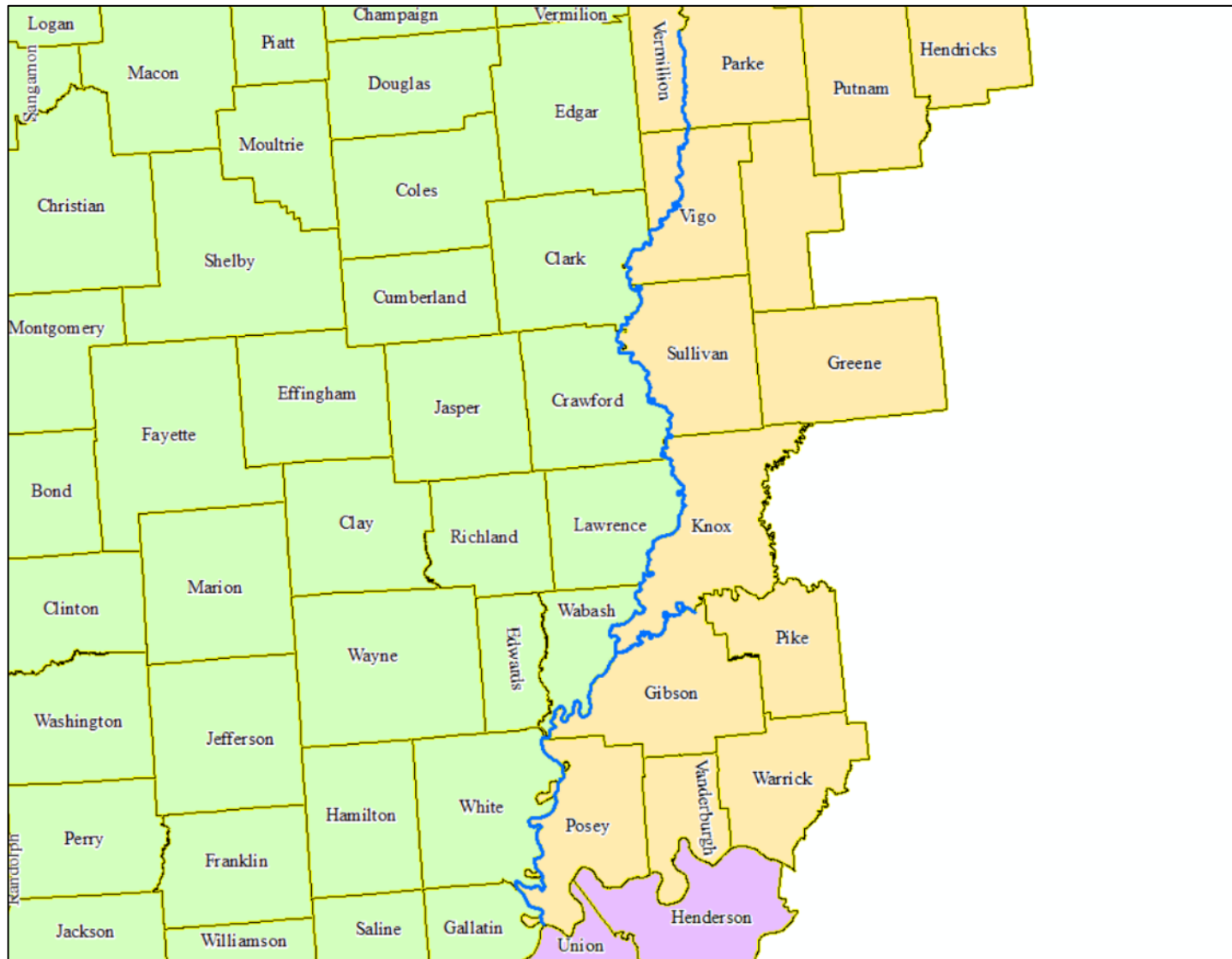
Wabash Cannonball Bridge



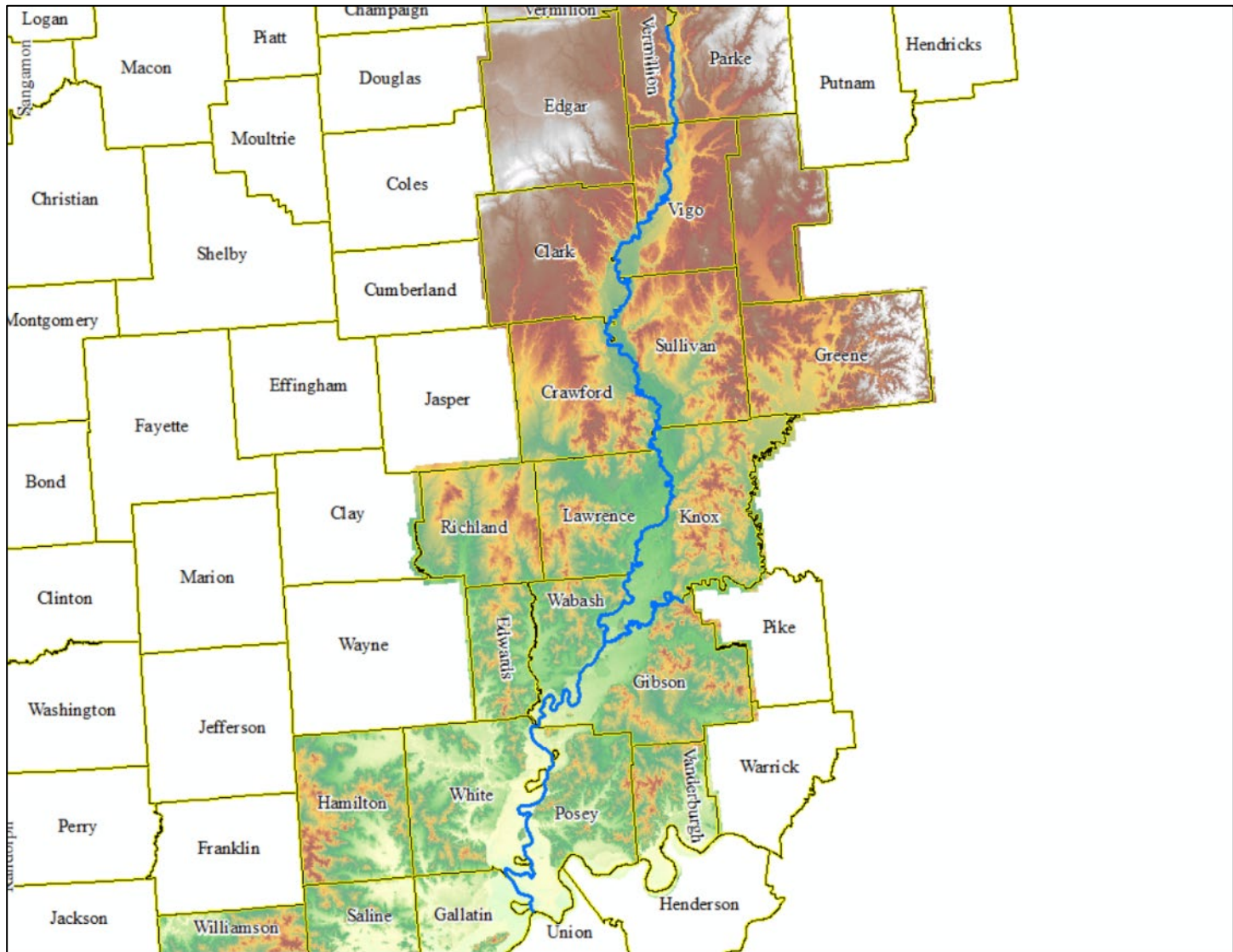
The New Model



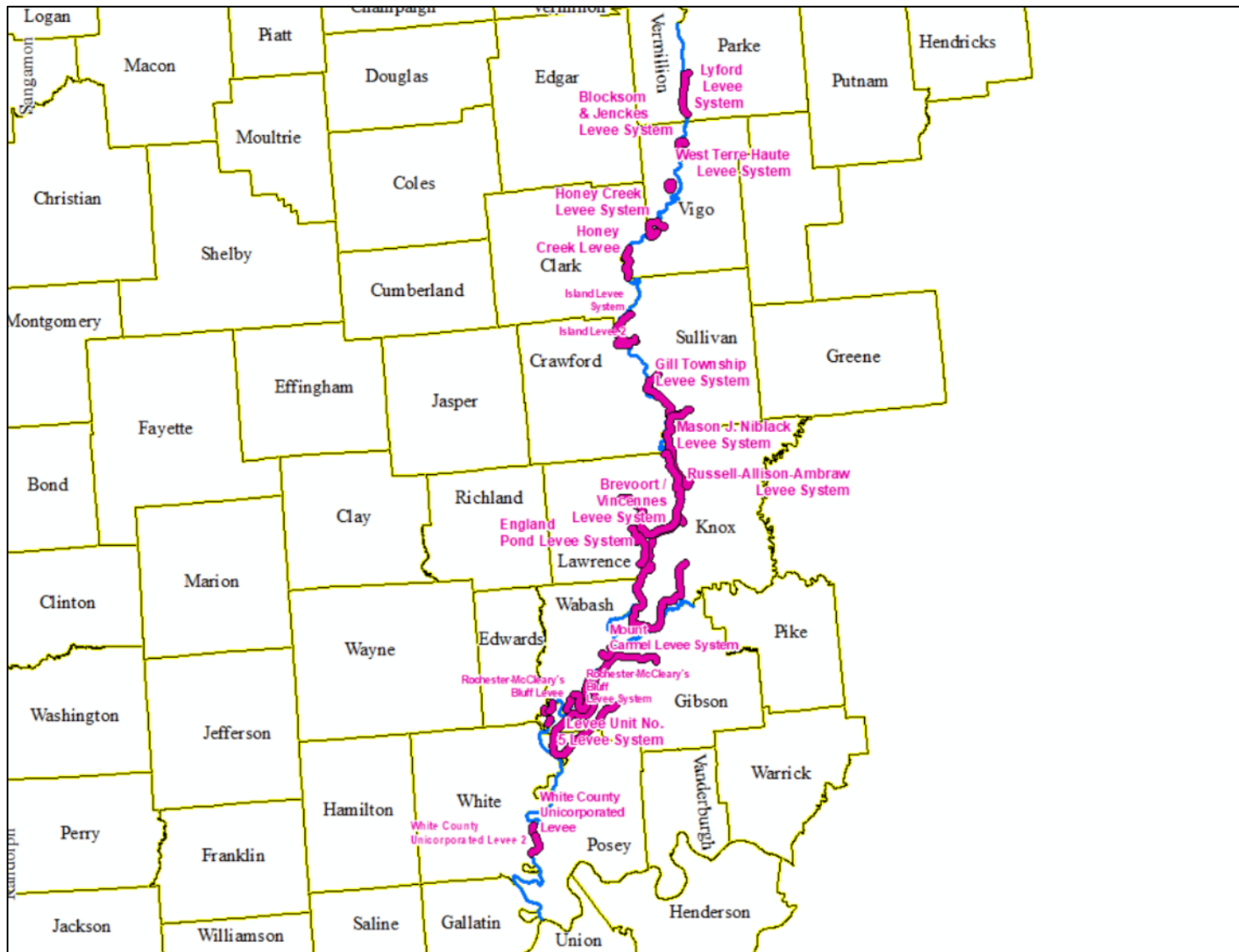
The New Model



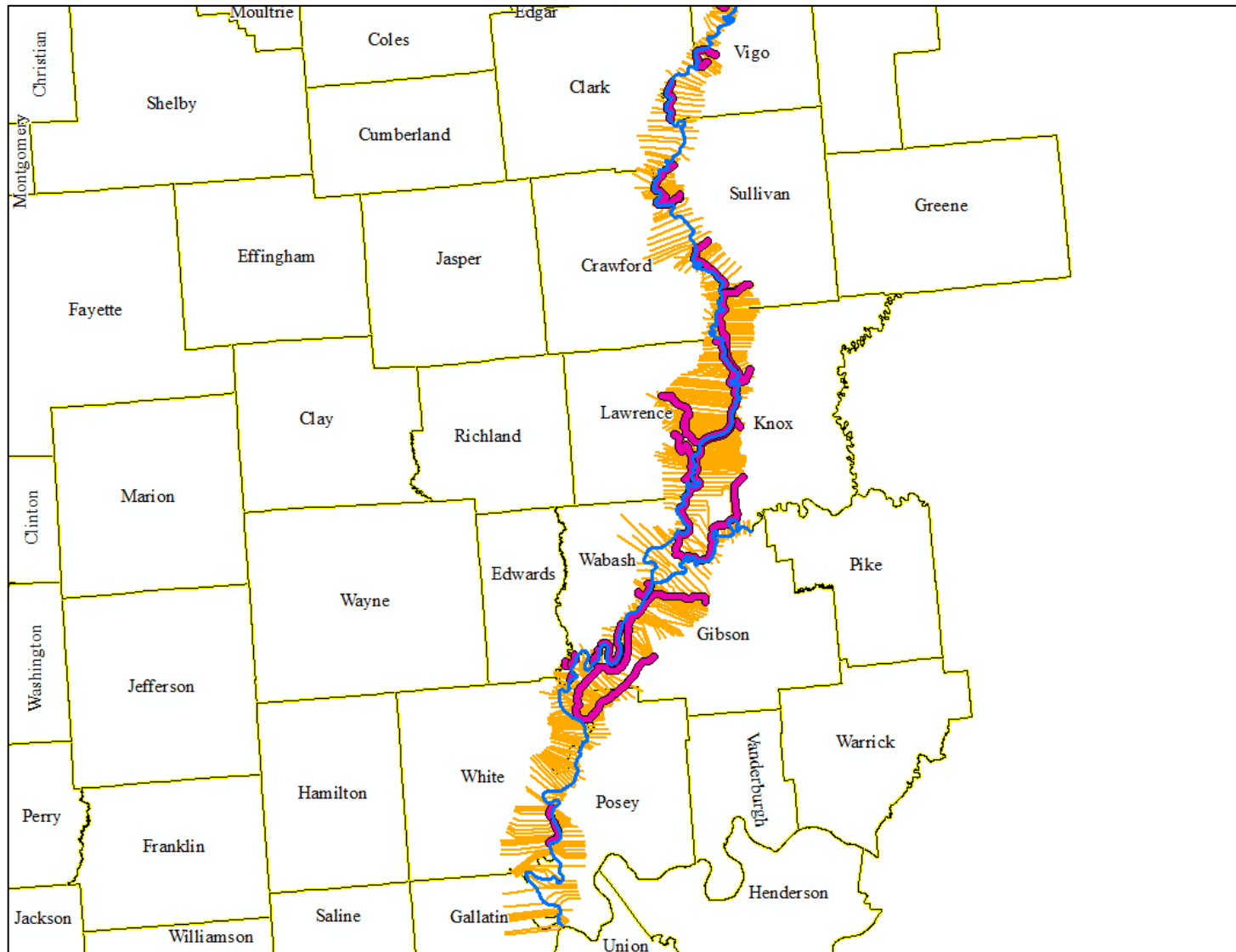
The New Model



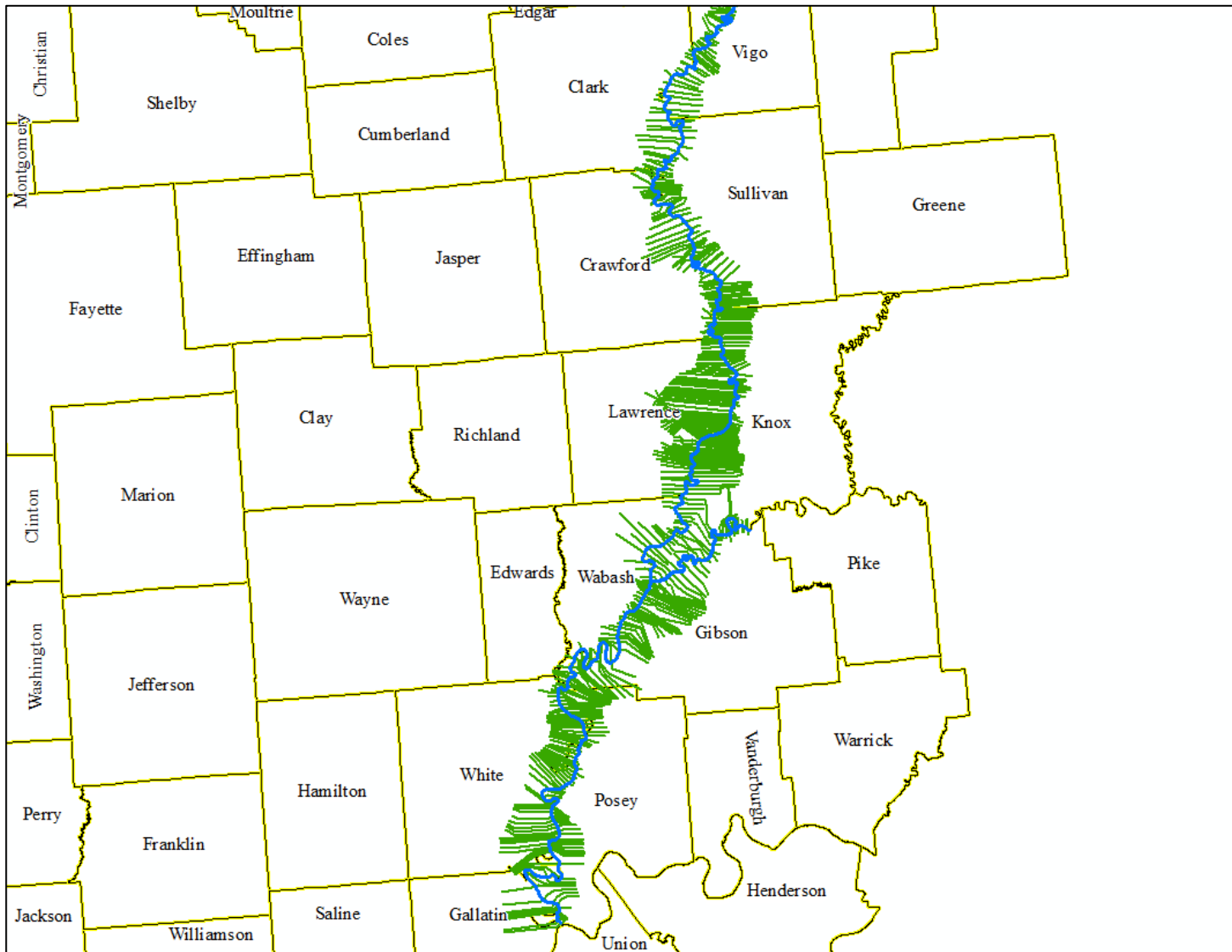
The New Model



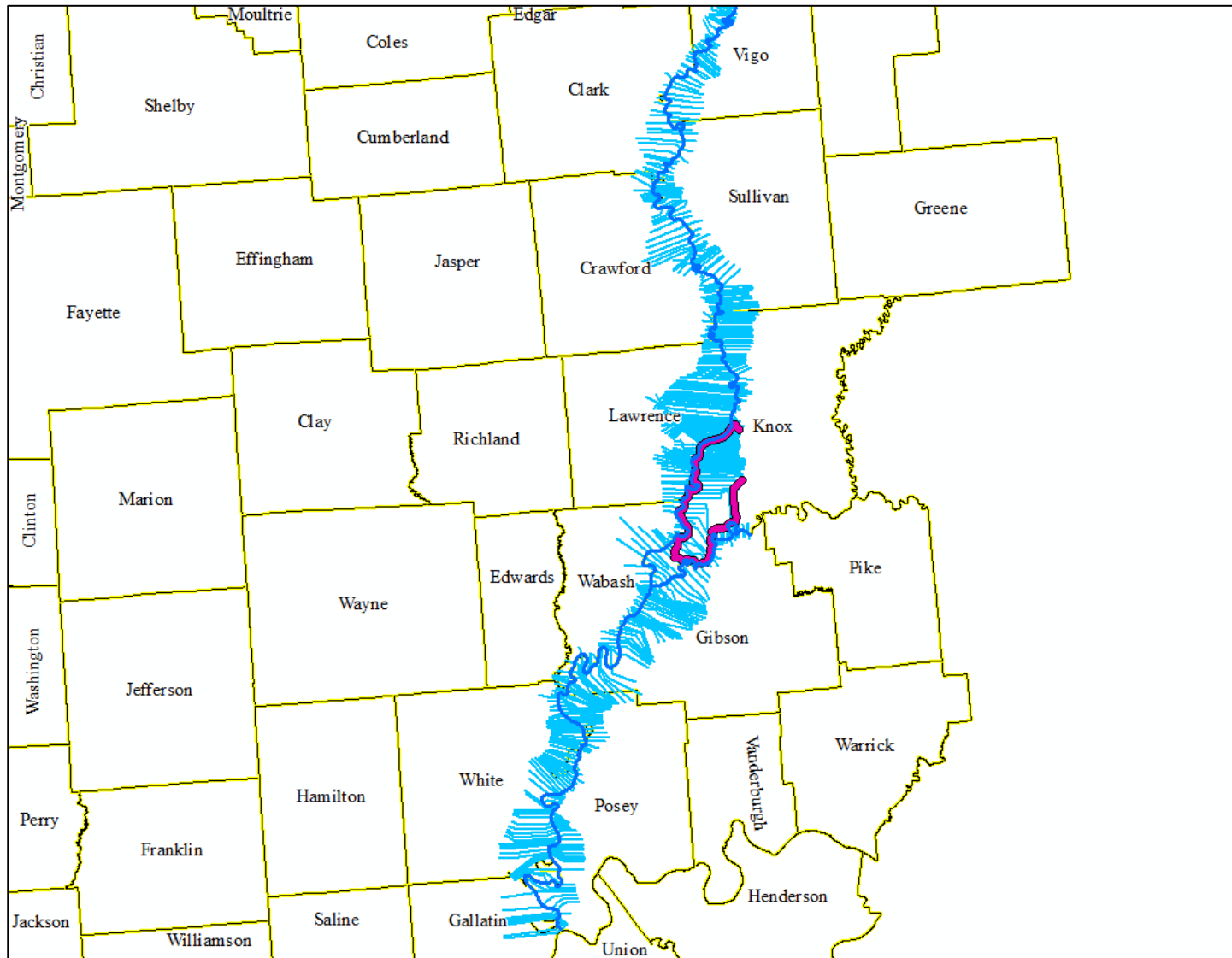
The New Model



The New Model

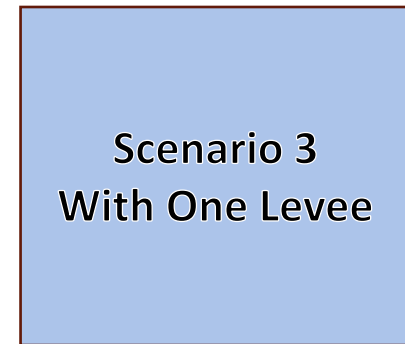
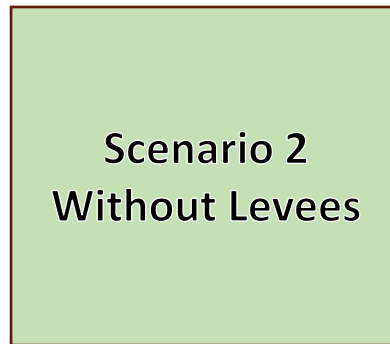
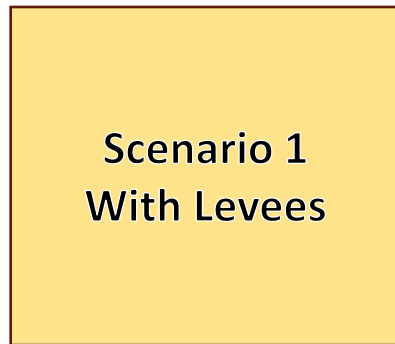


The New Model



The New Model

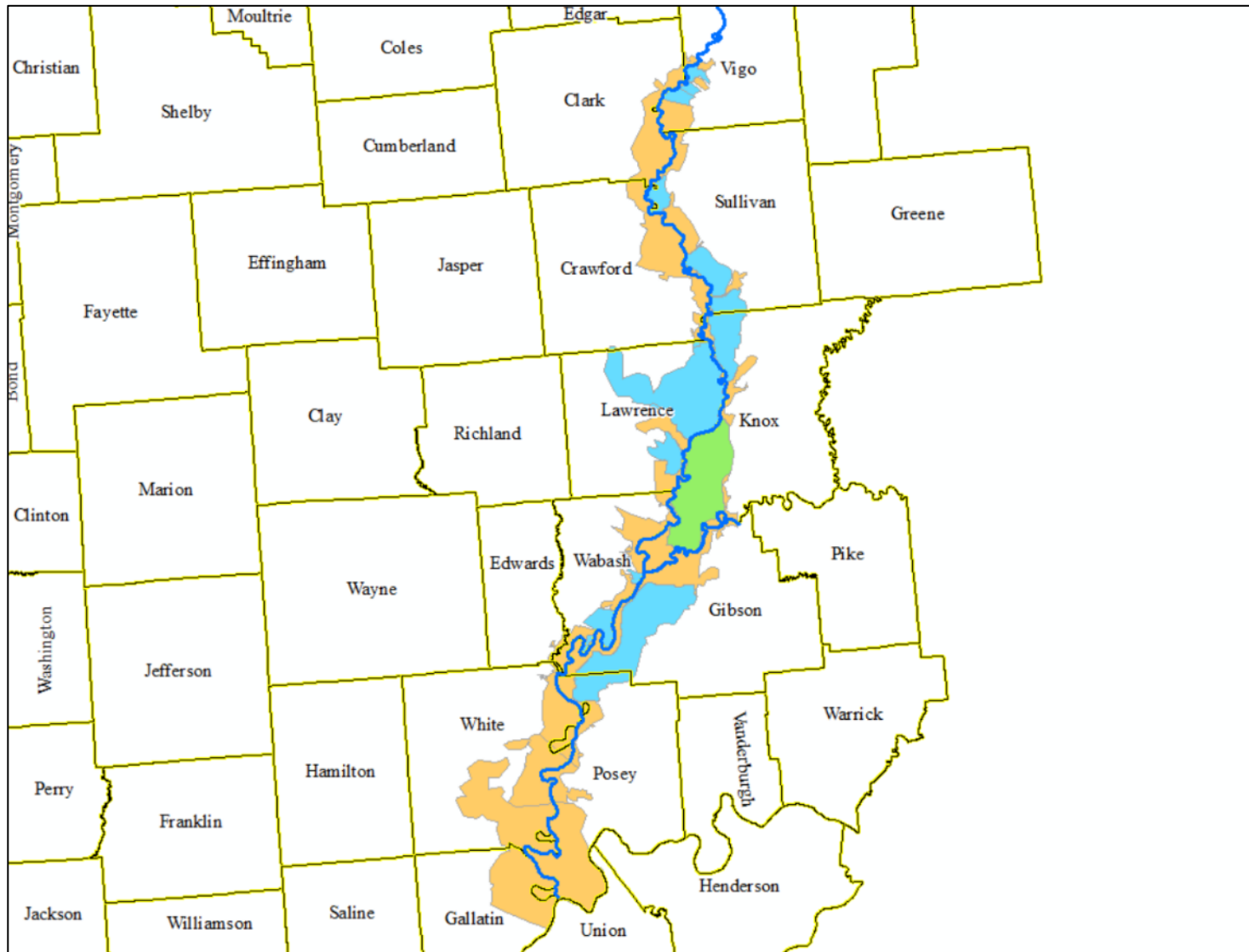
Scenarios



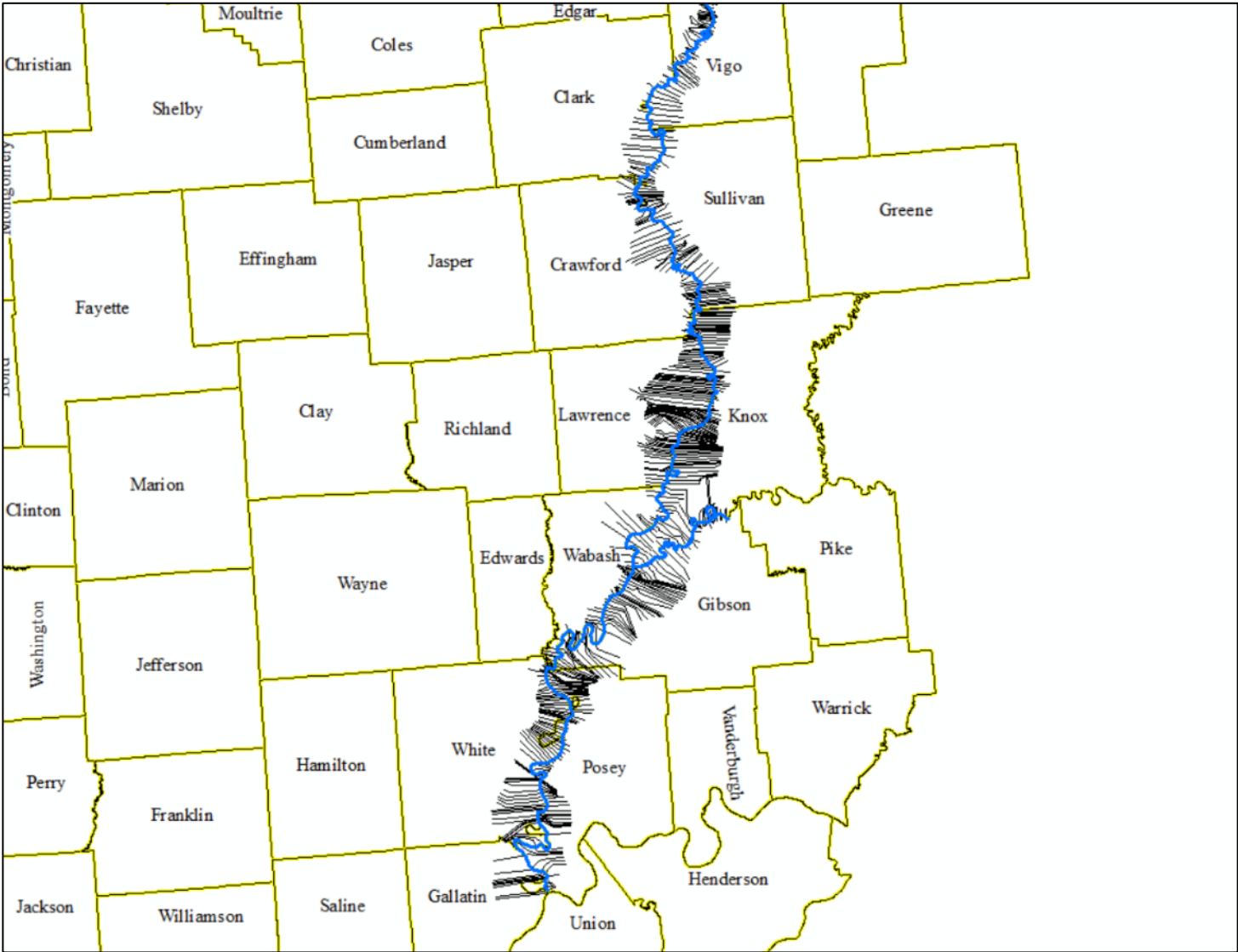
Kodak's Discovery



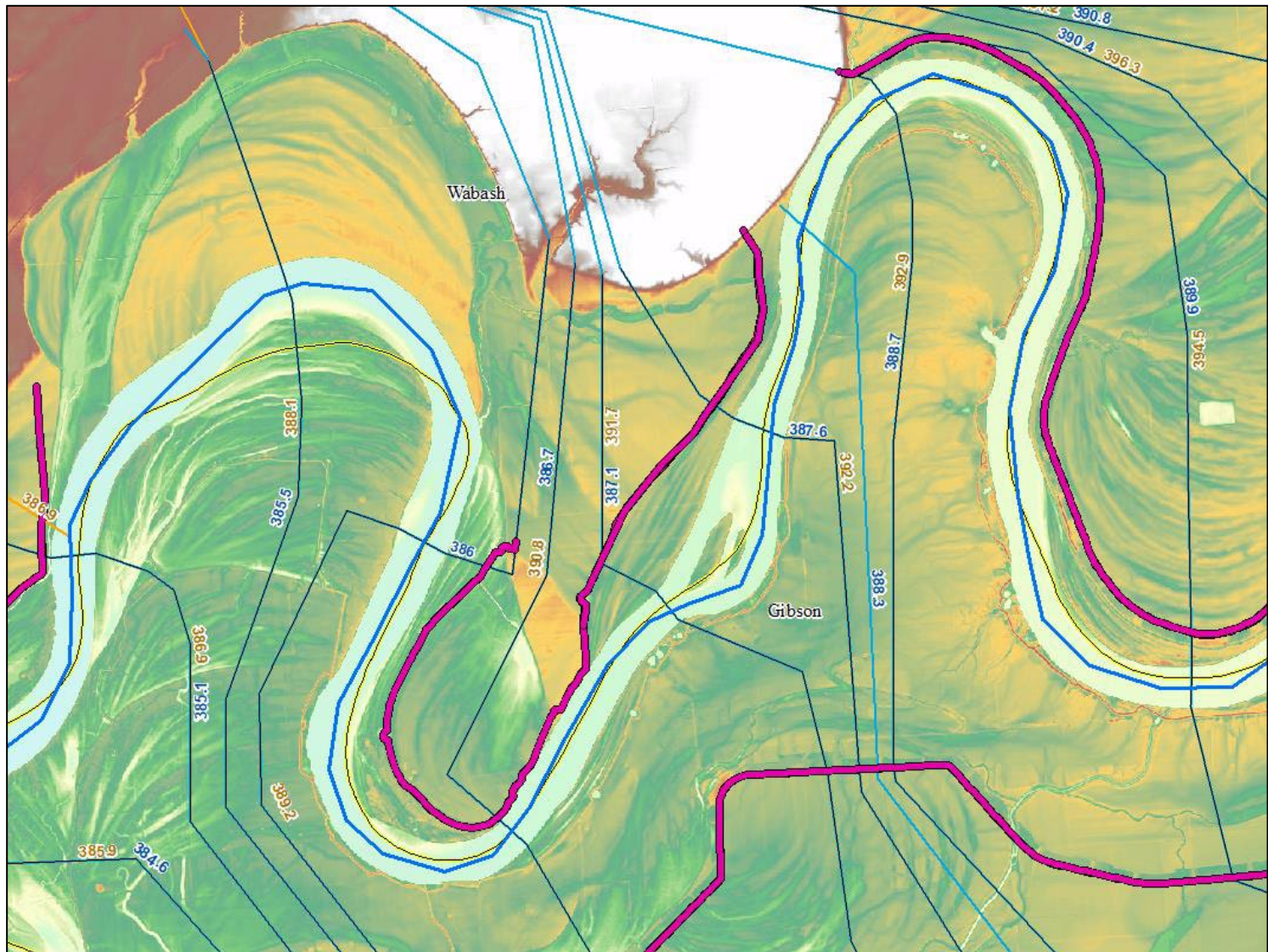
Floodplain Delineation Process



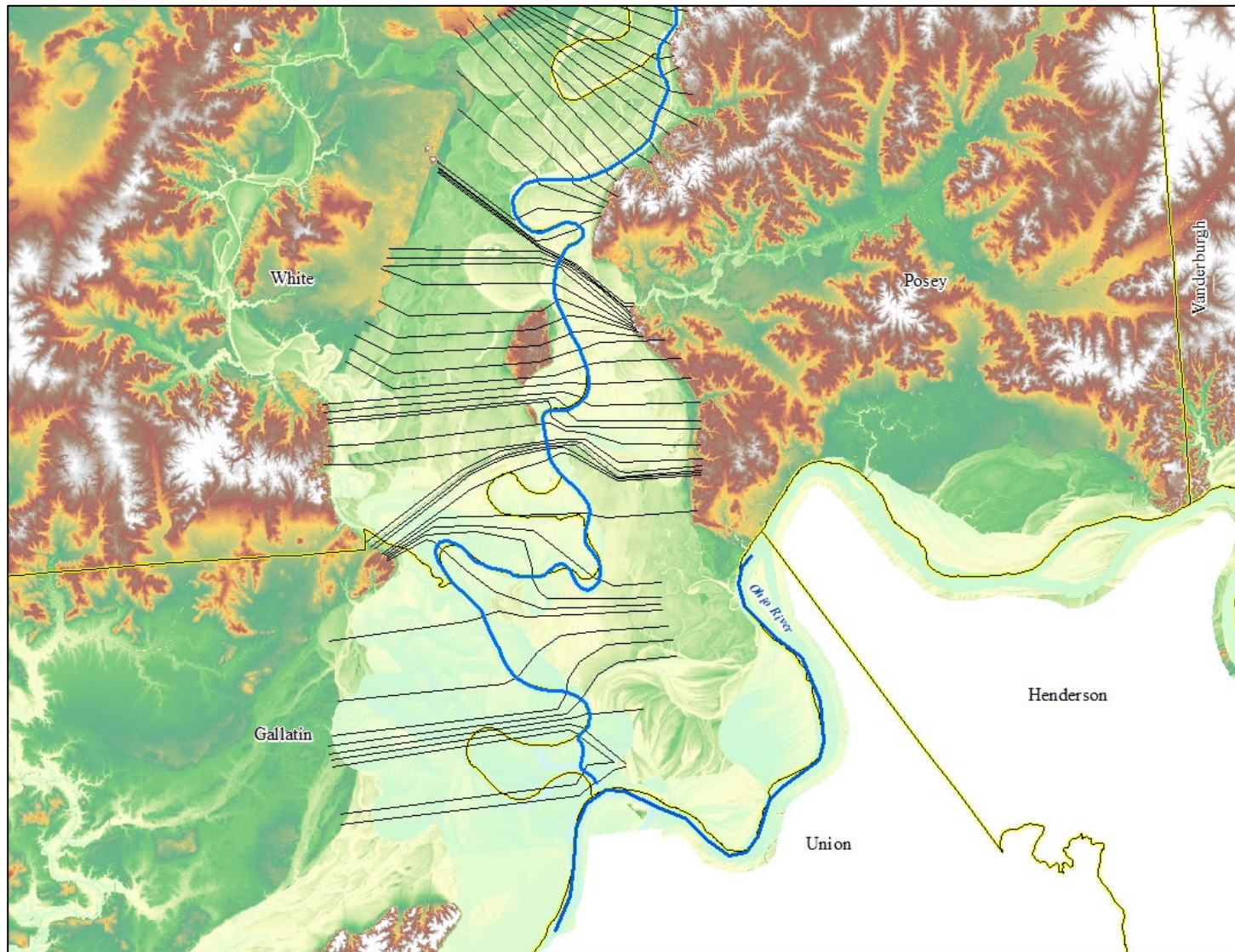
Floodplain Delineation Process



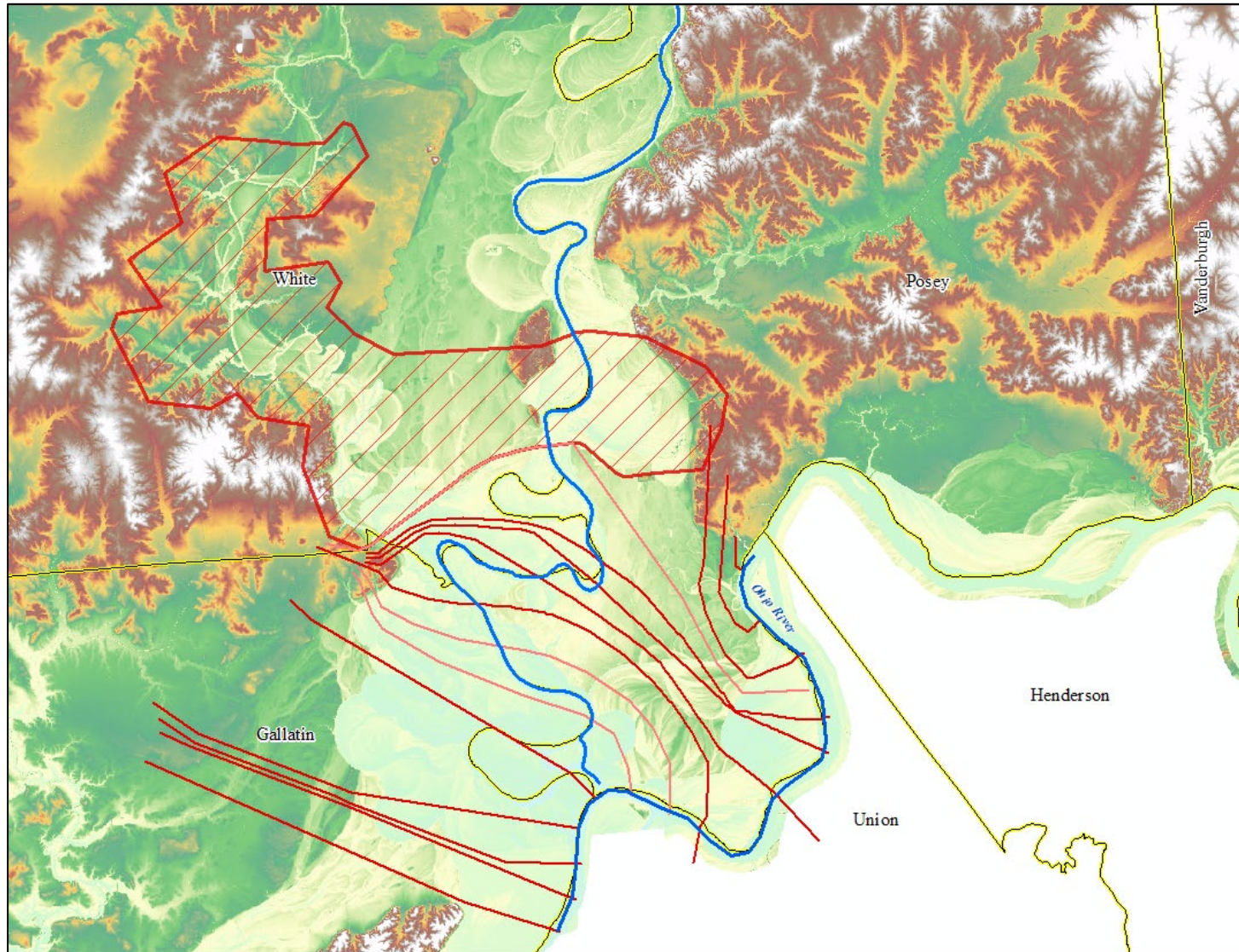
Floodplain Delineation Process



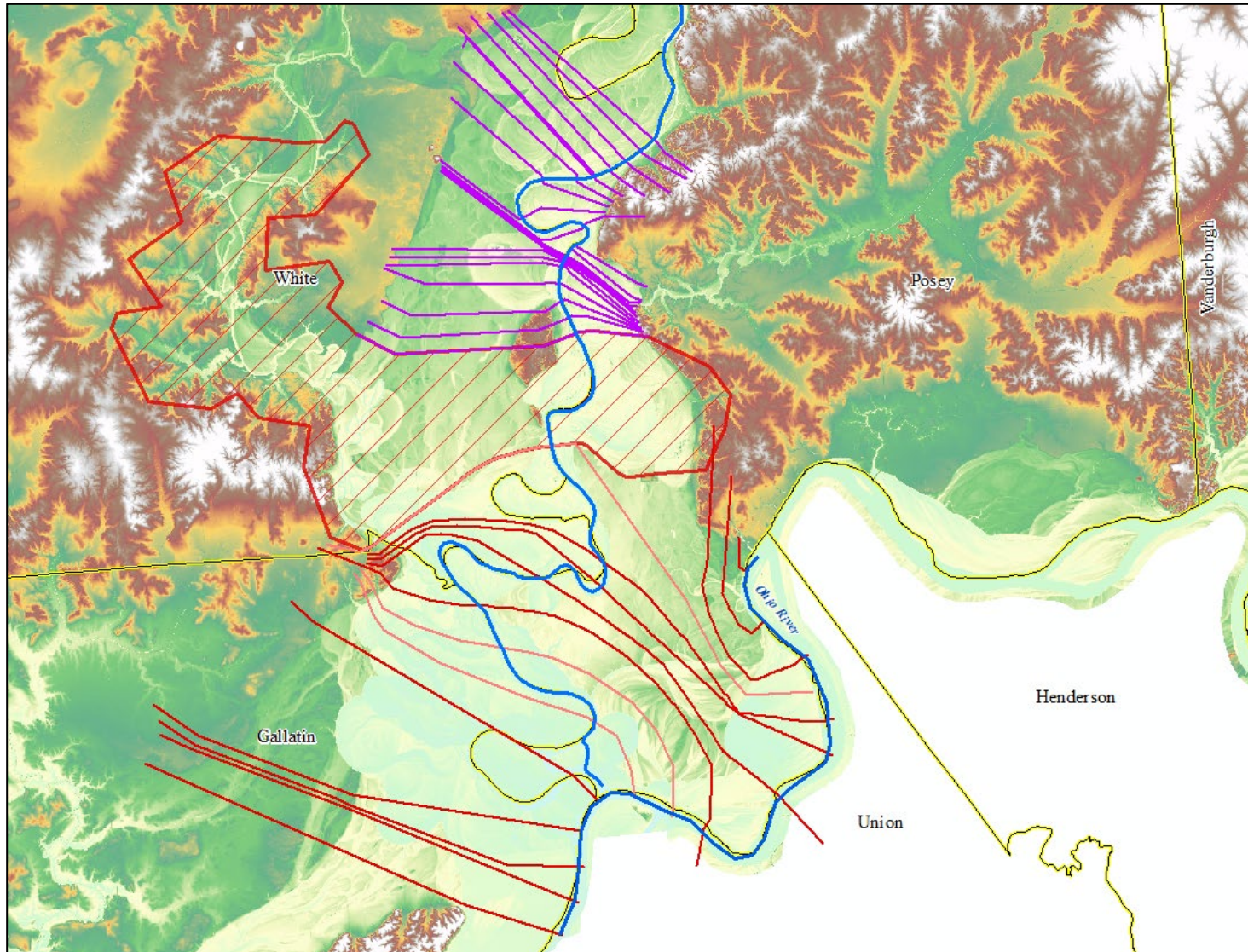
Floodplain Delineation Process



Floodplain Delineation Process

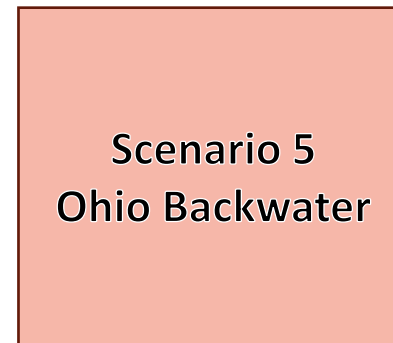
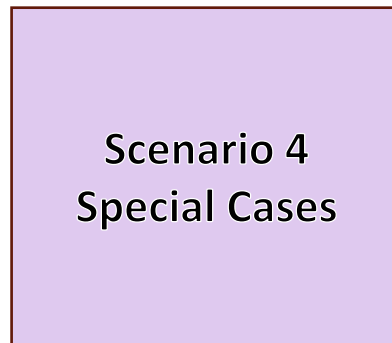
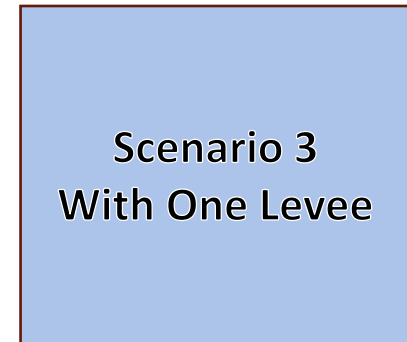
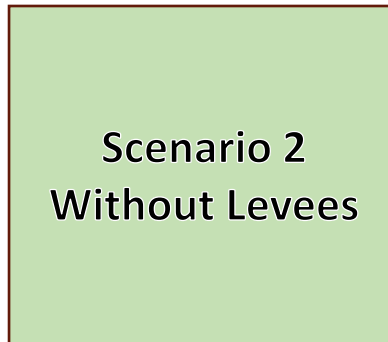
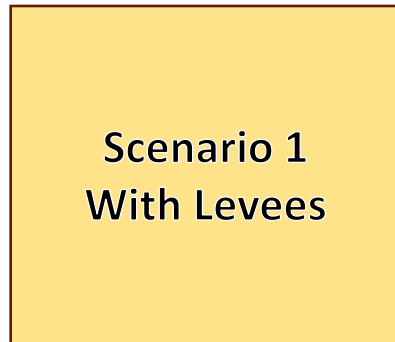


Floodplain Delineation Process

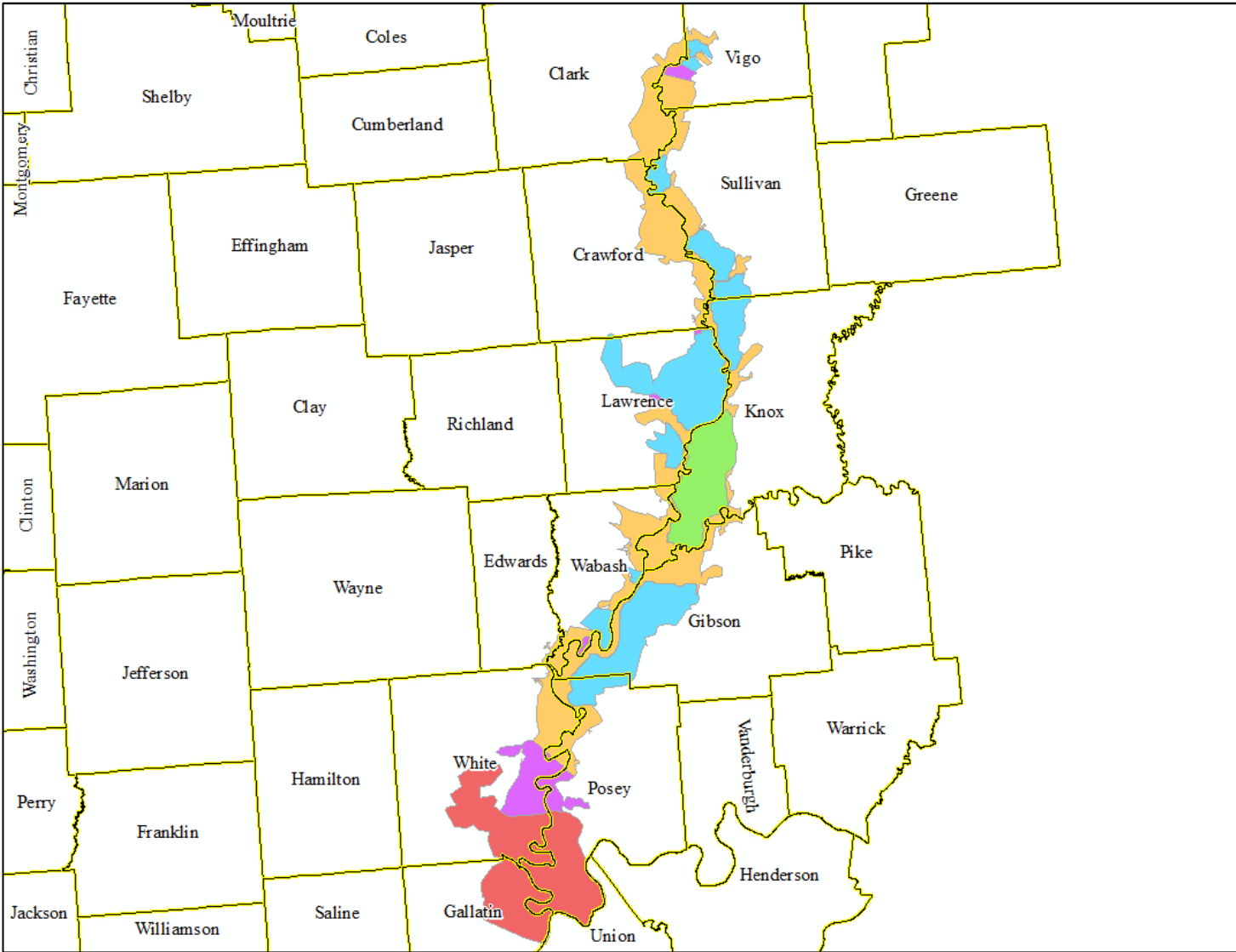


Floodplain Delineation Process

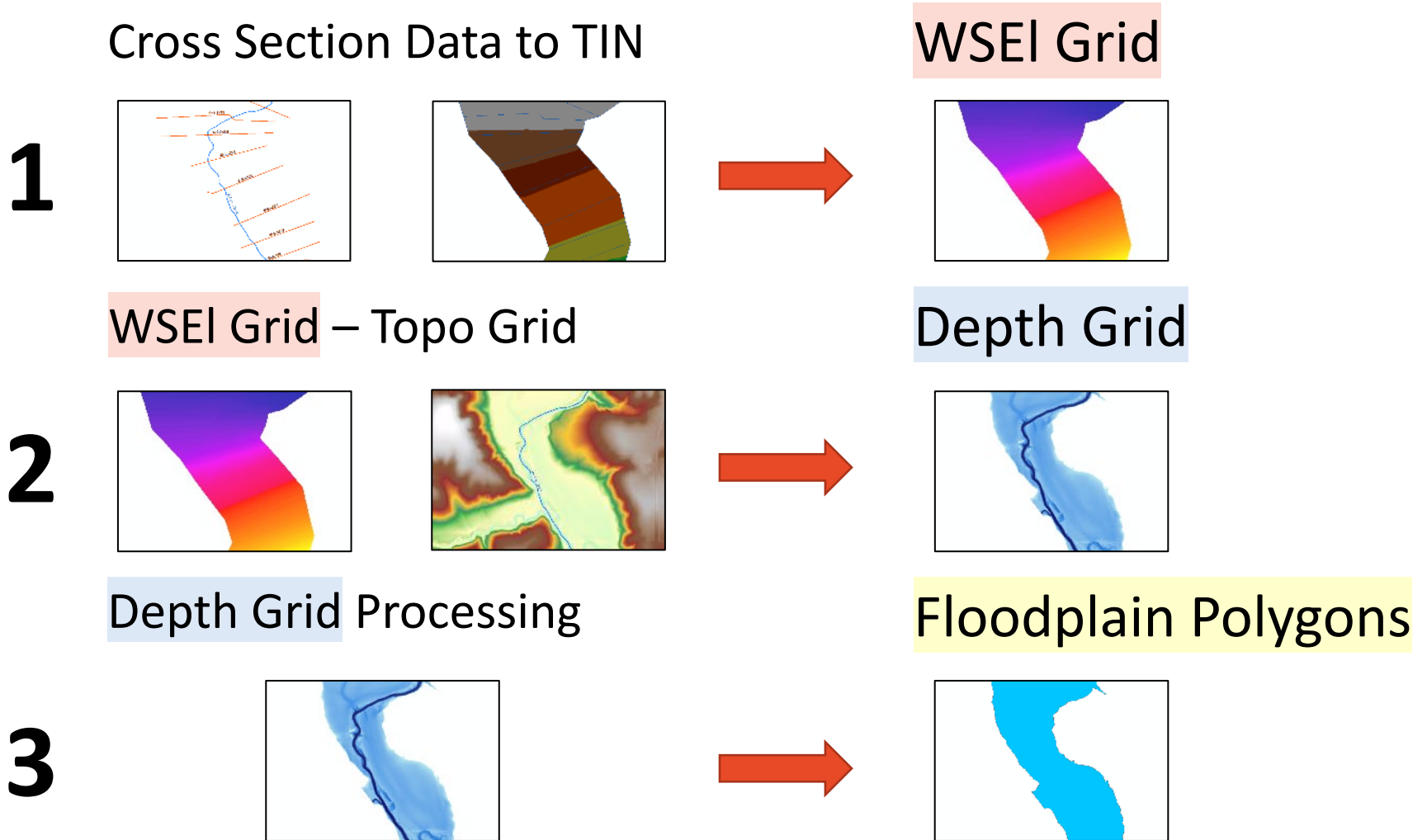
Scenarios



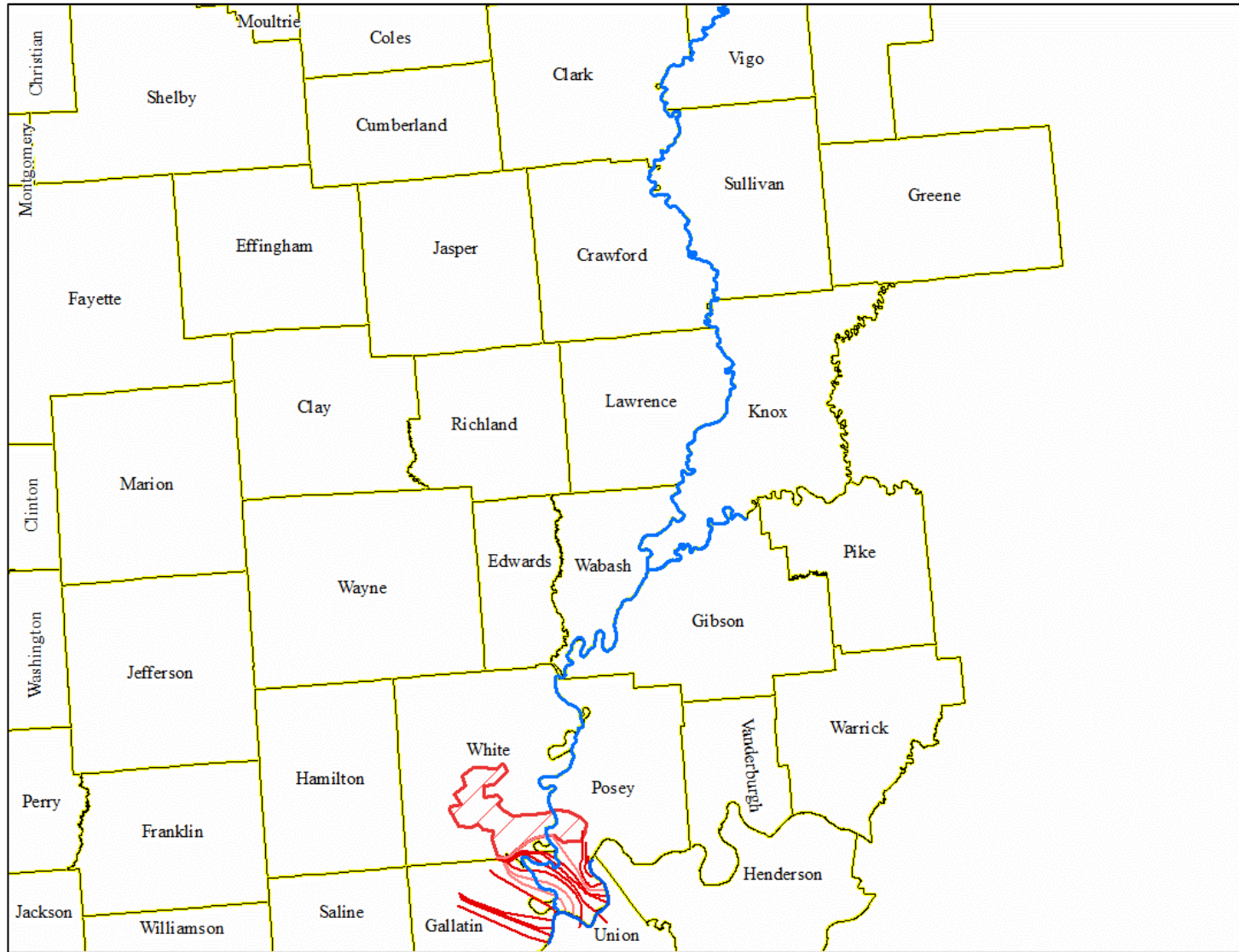
Floodplain Delineation Process



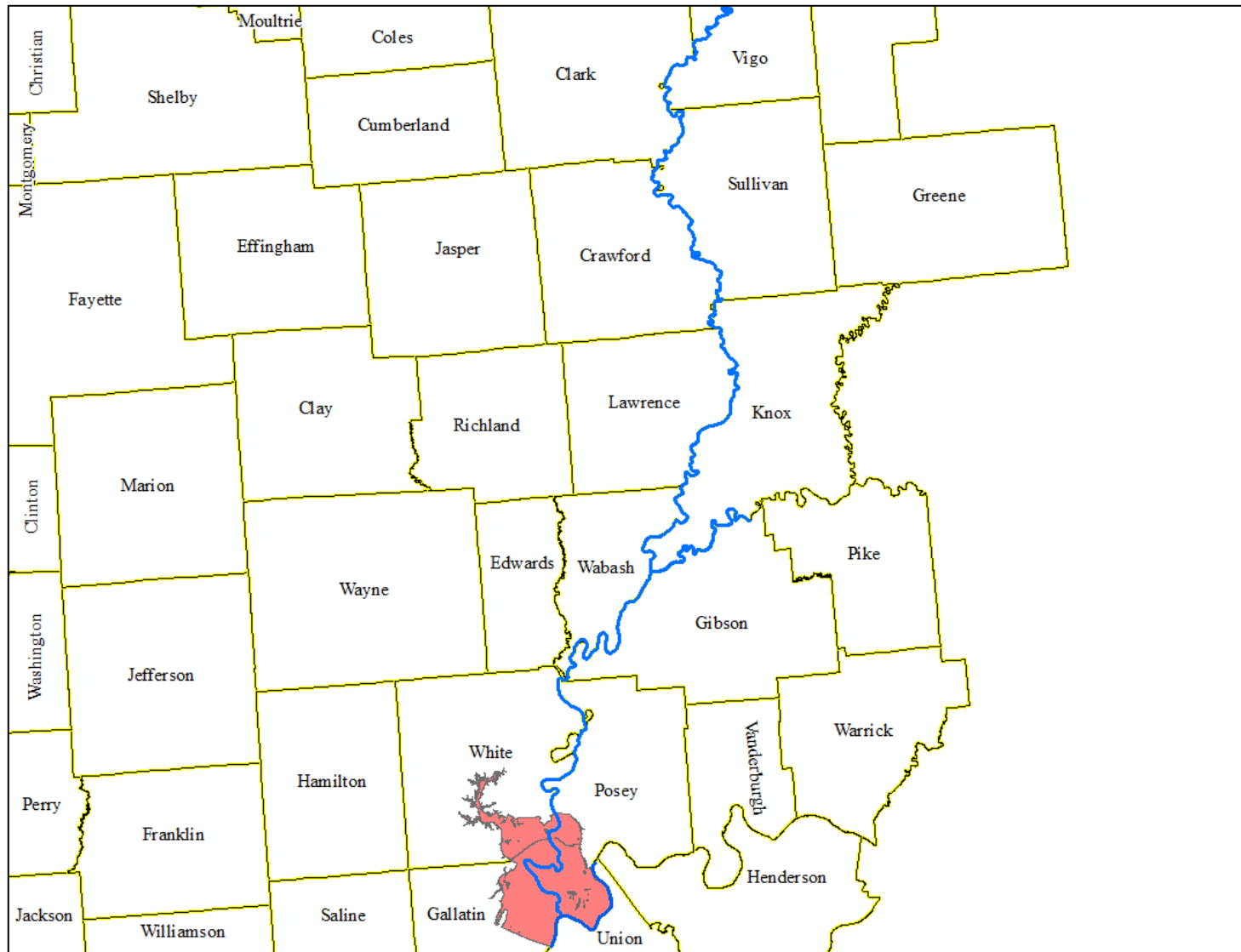
Floodplain Delineation Process



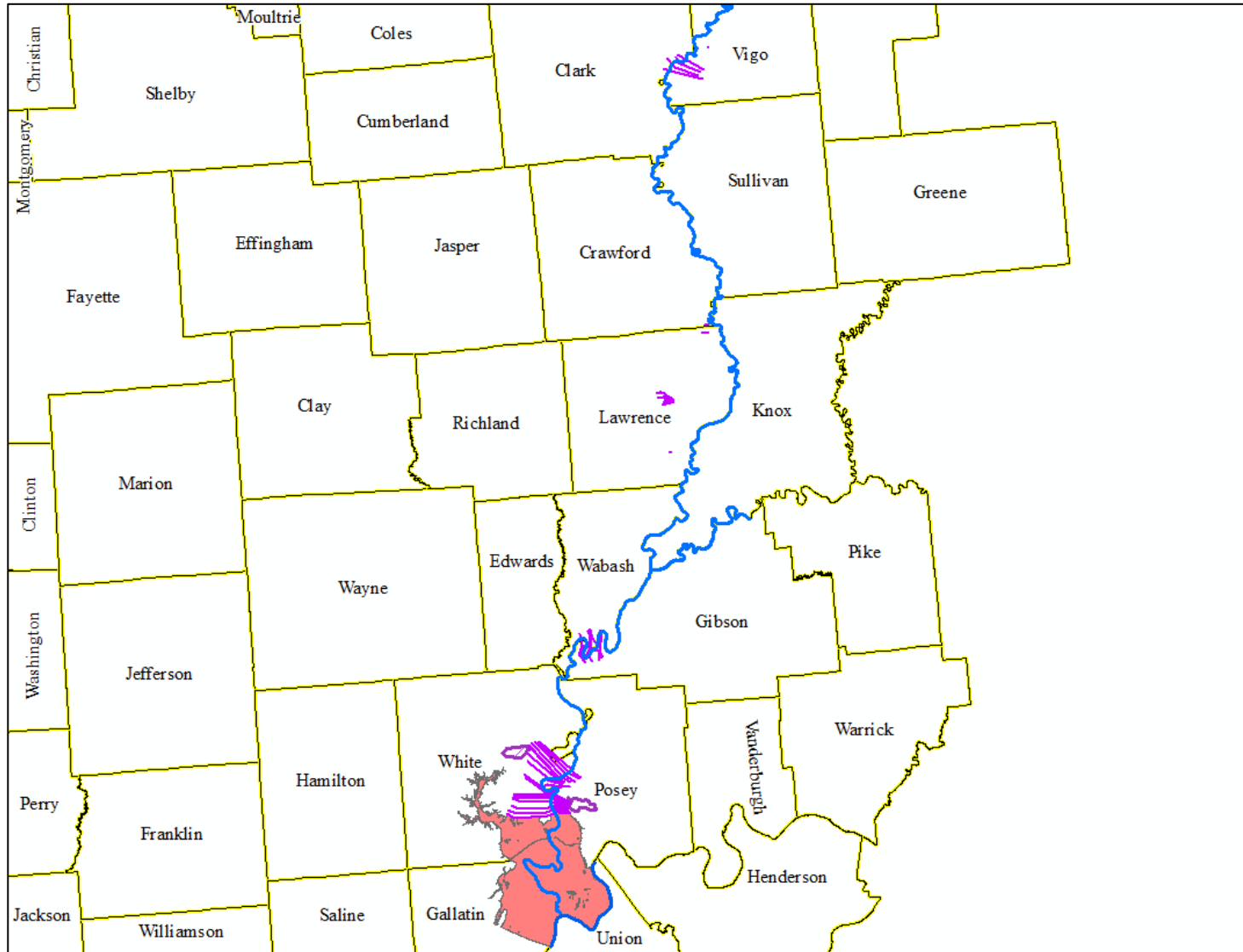
Floodplain Delineation Process



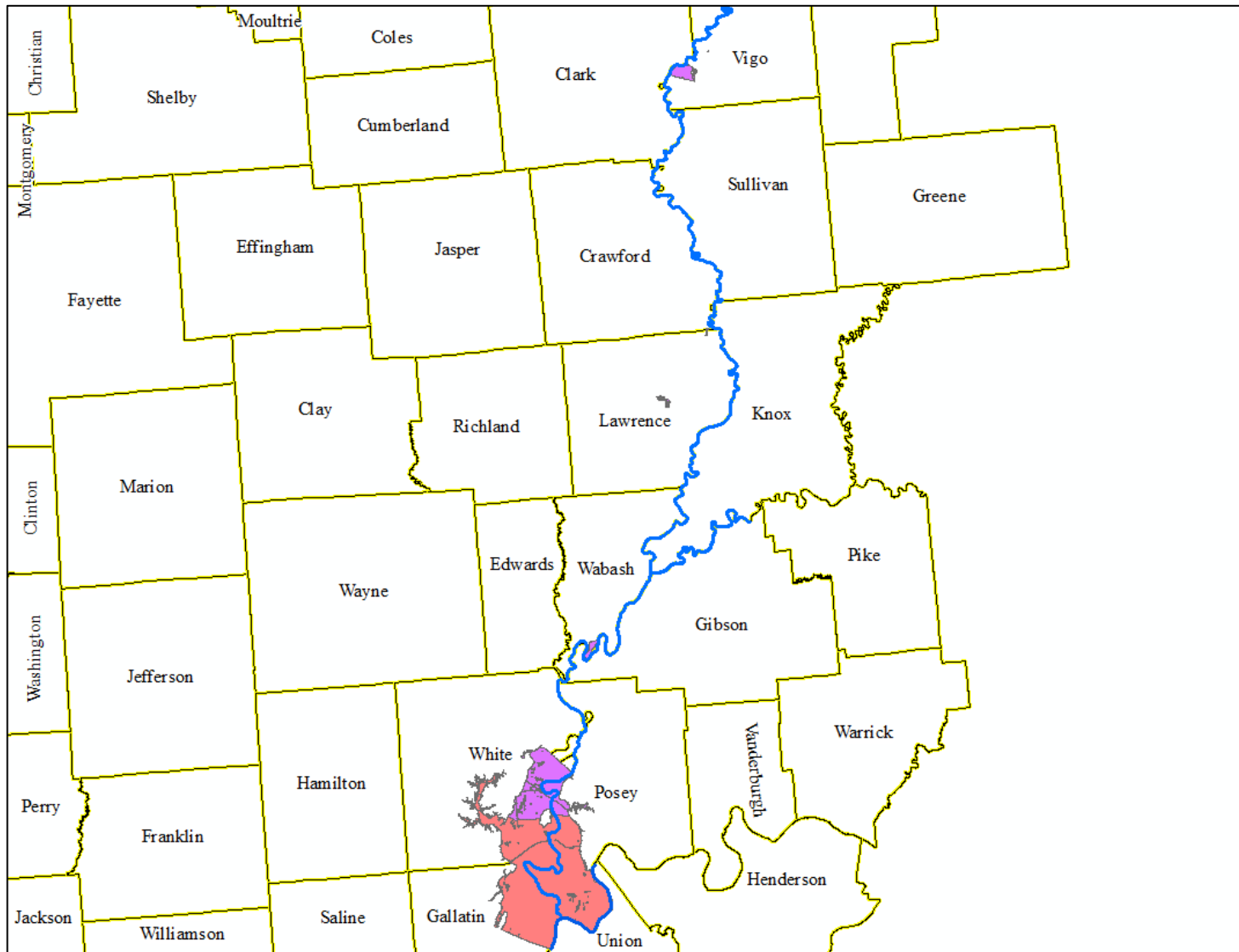
Floodplain Delineation Process



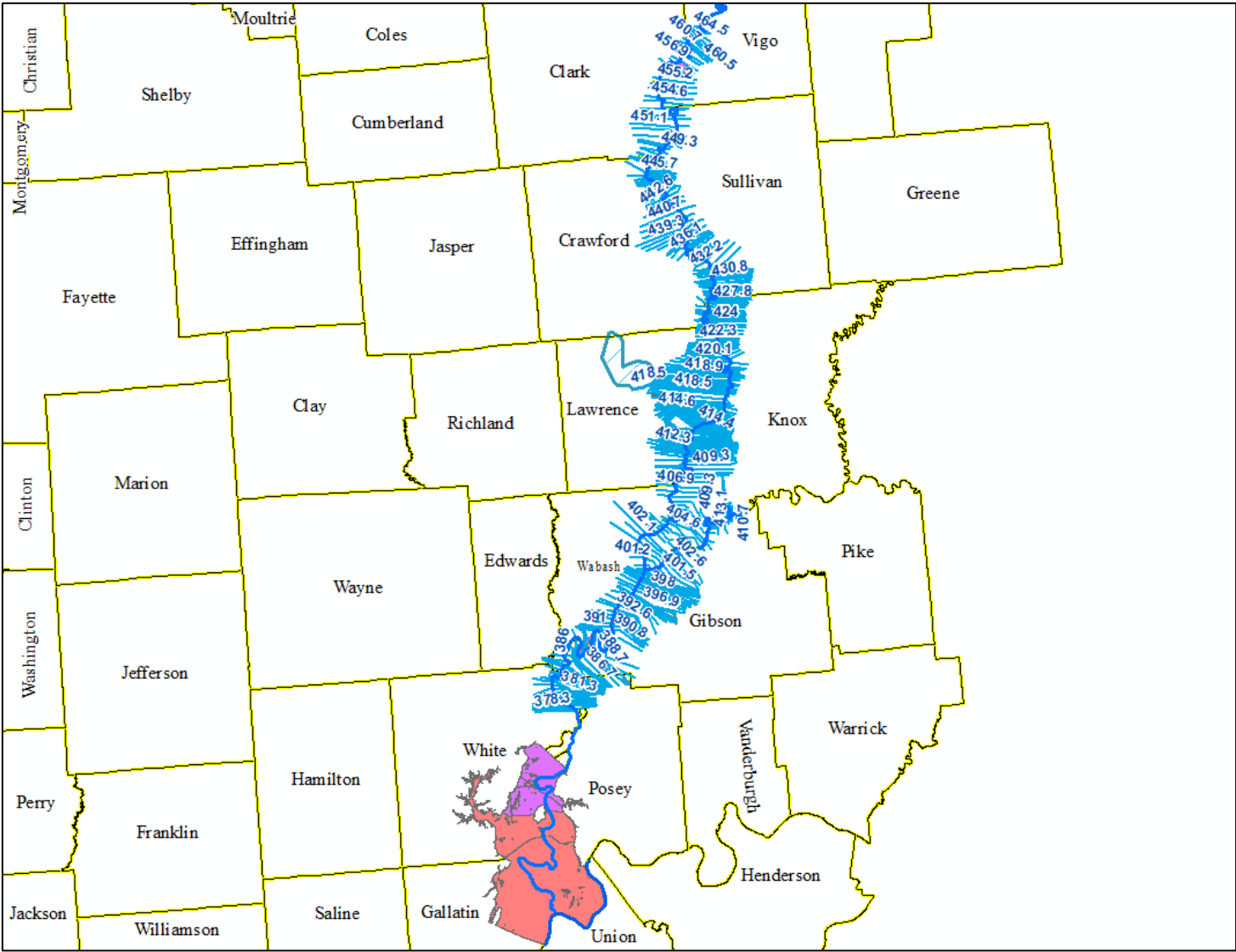
Floodplain Delineation Process



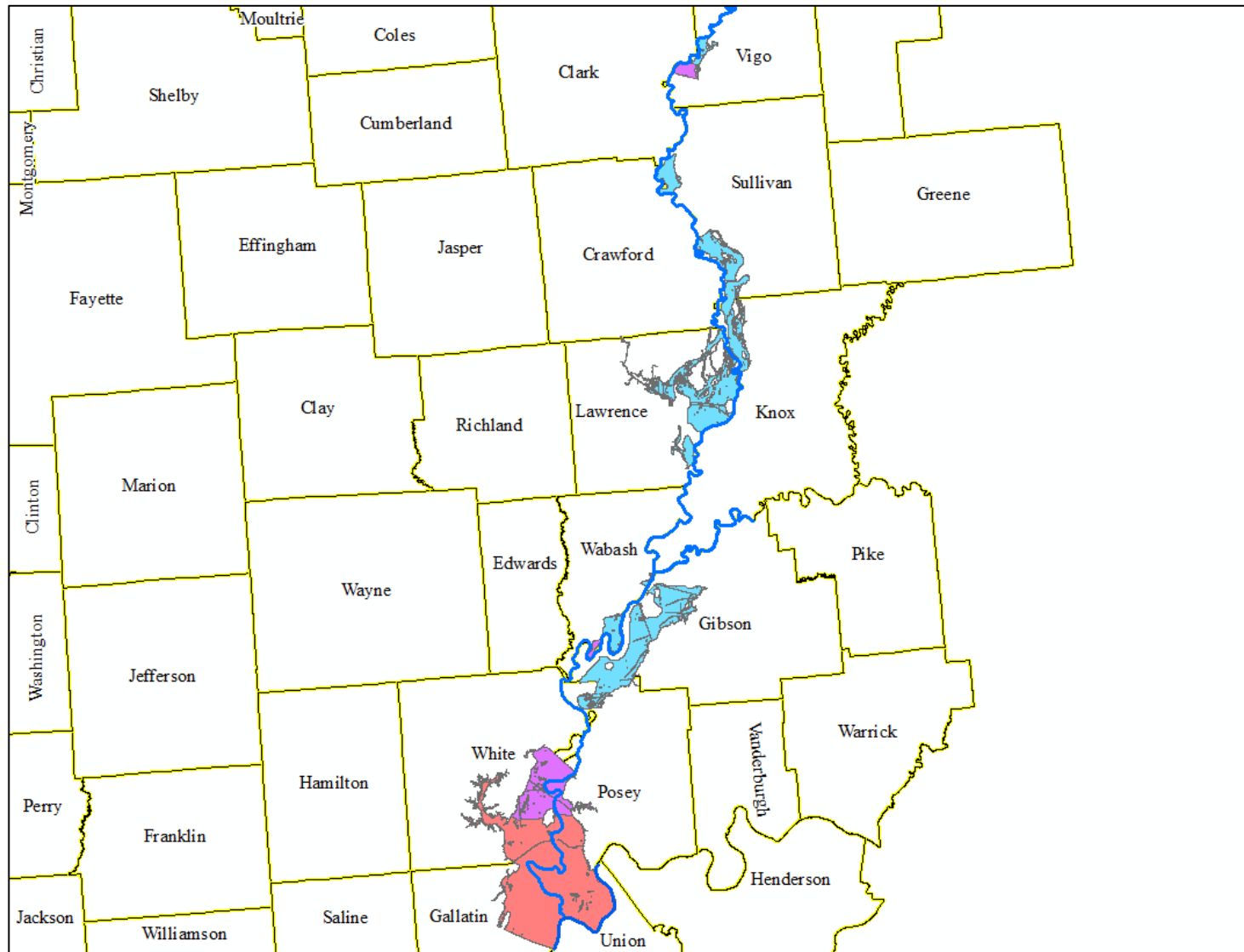
Floodplain Delineation Process



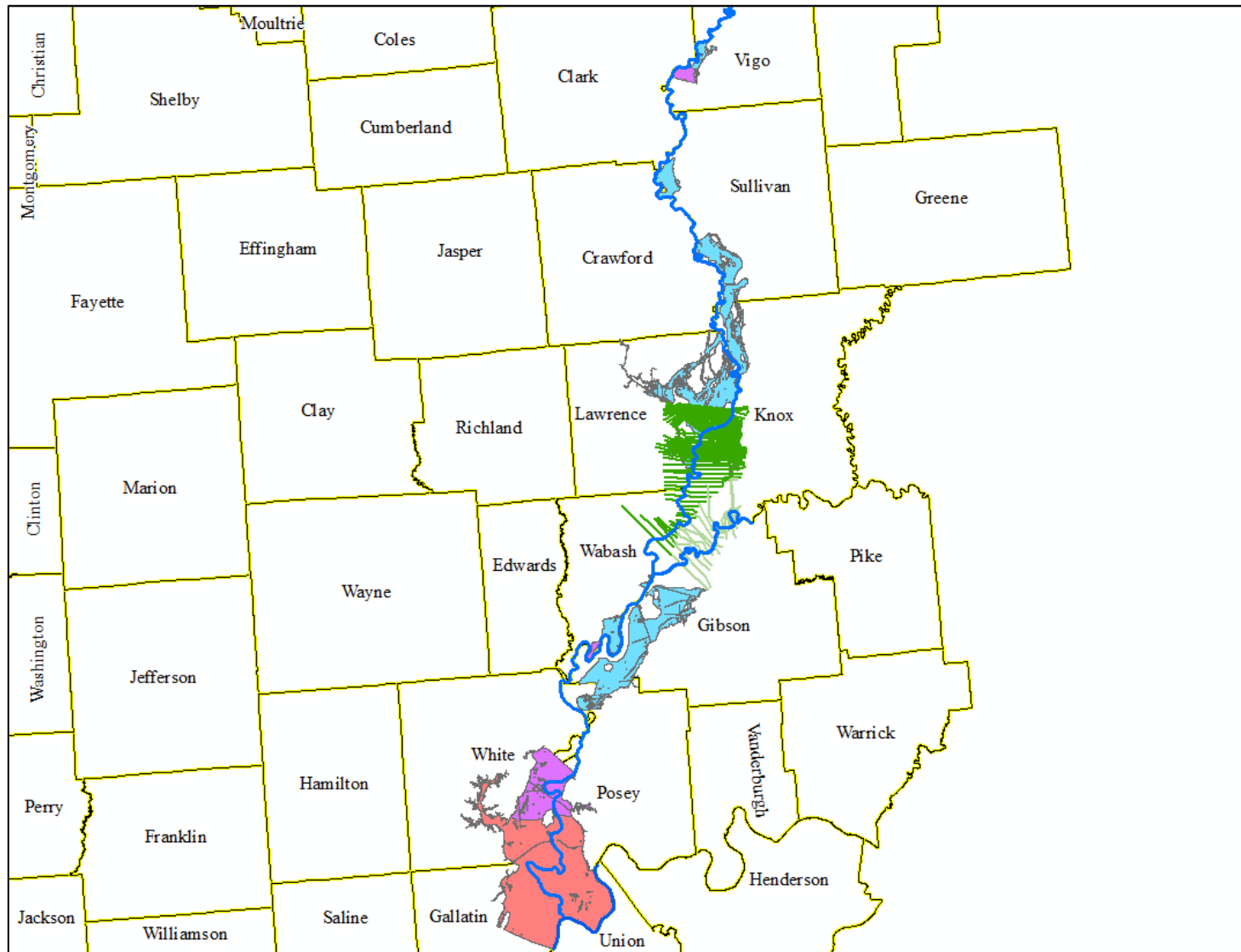
Floodplain Delineation Process



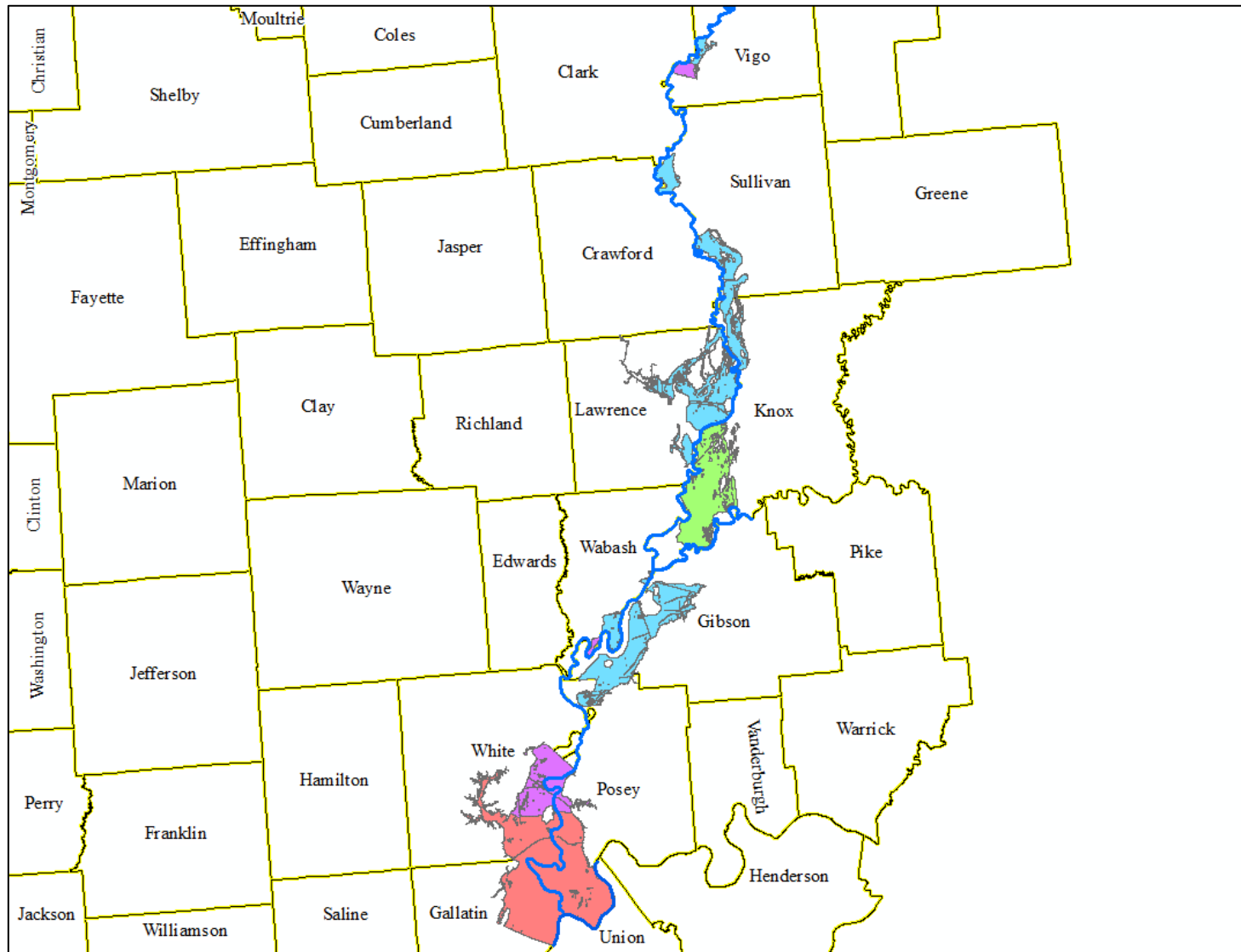
Floodplain Delineation Process



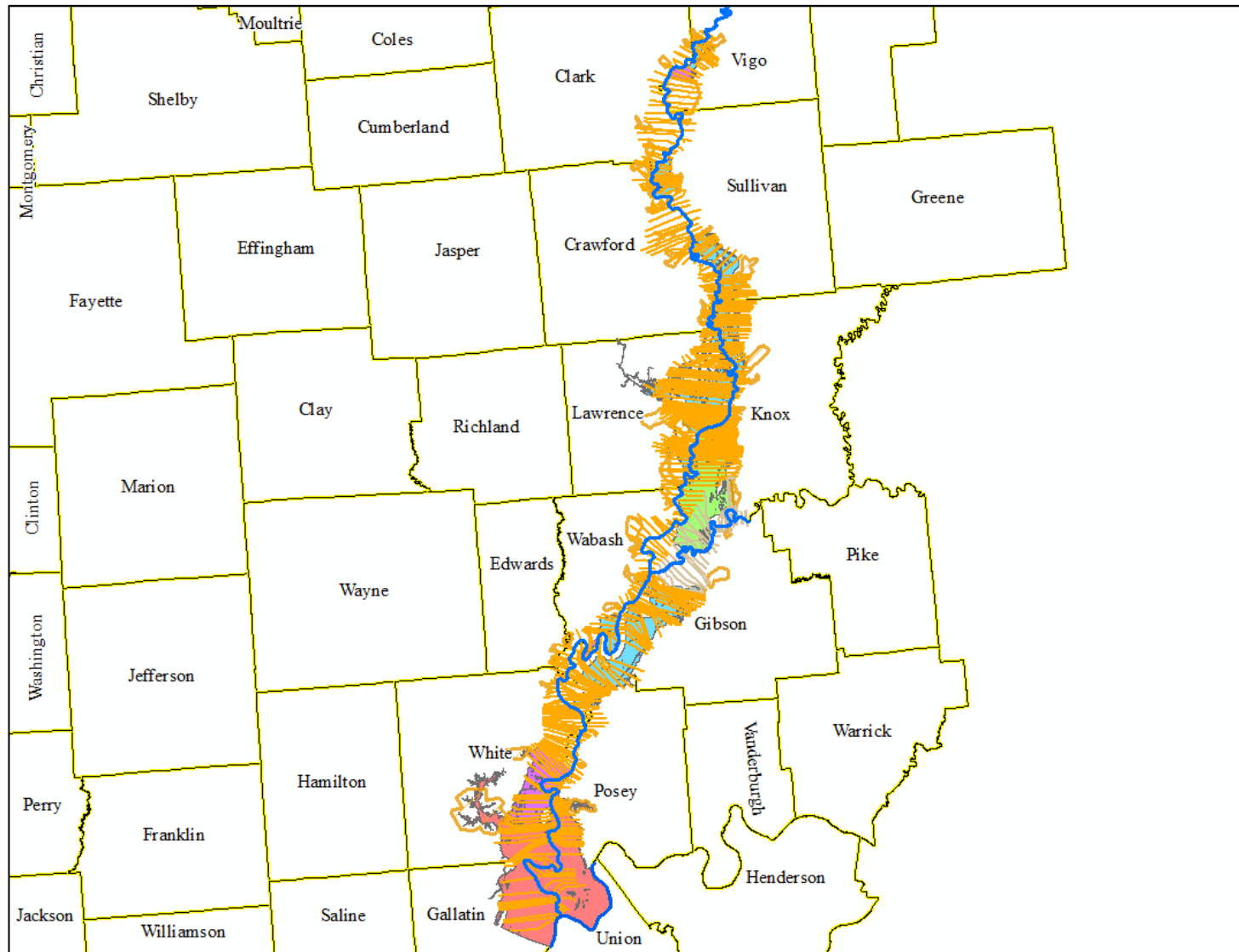
Floodplain Delineation Process



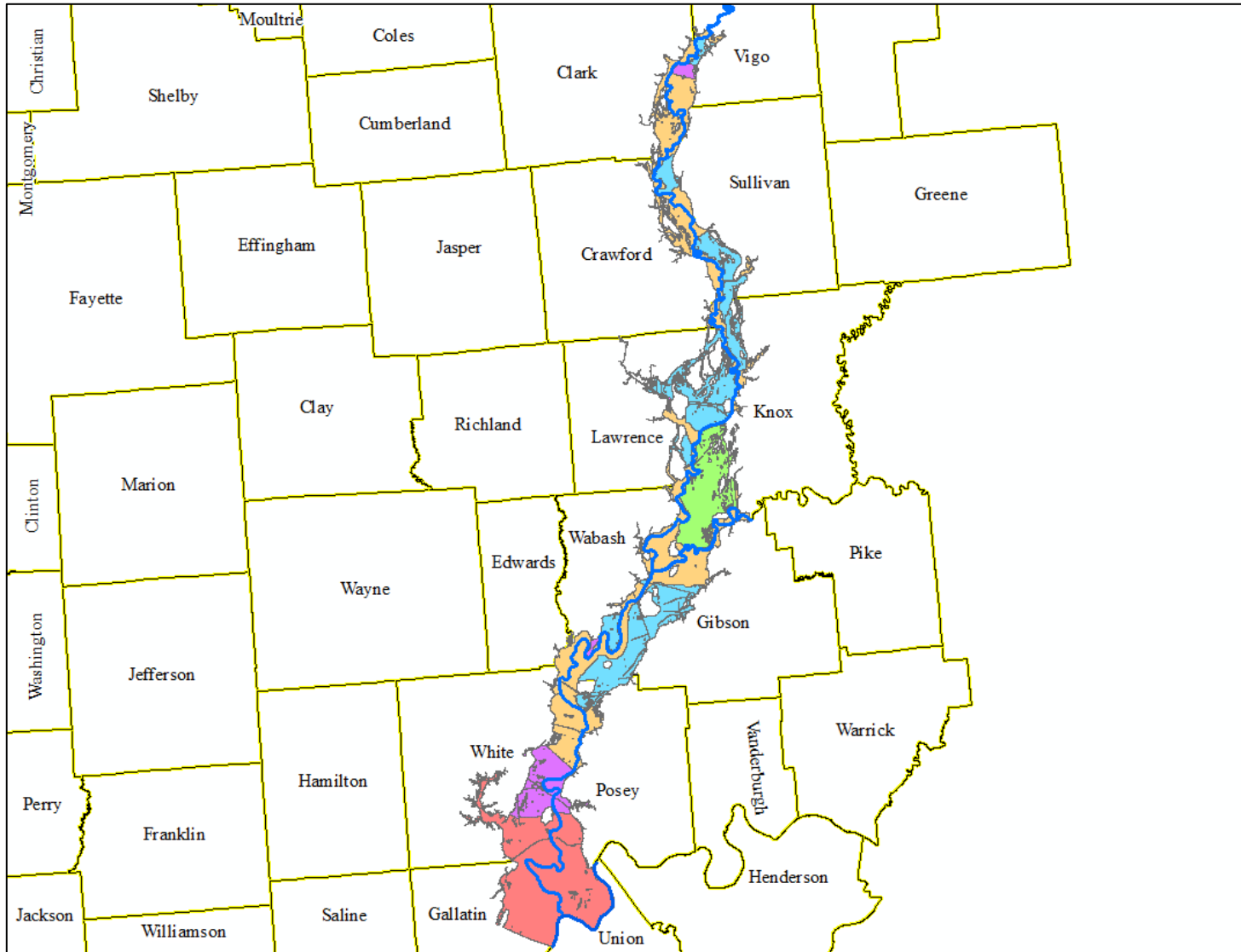
Floodplain Delineation Process



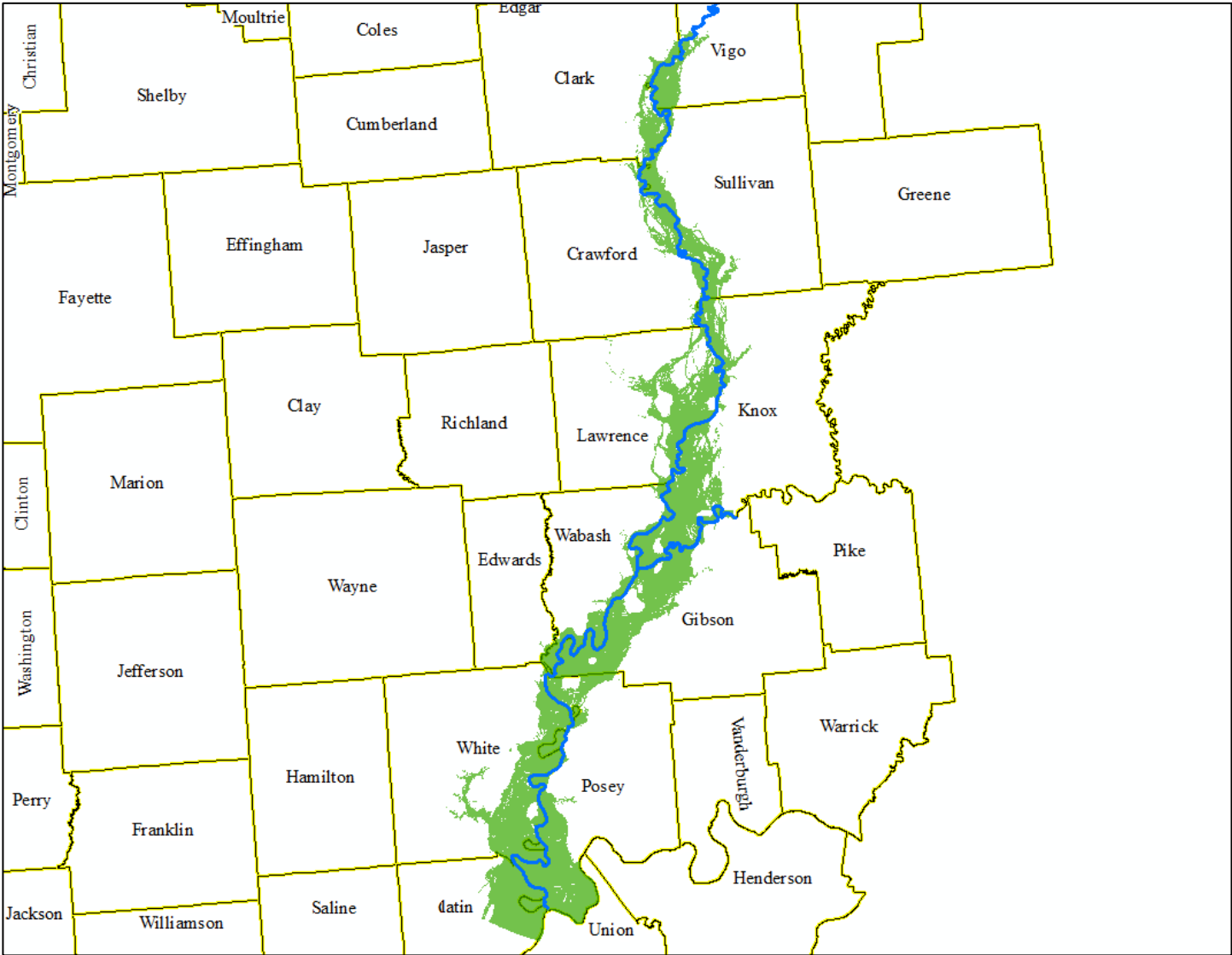
Floodplain Delineation Process



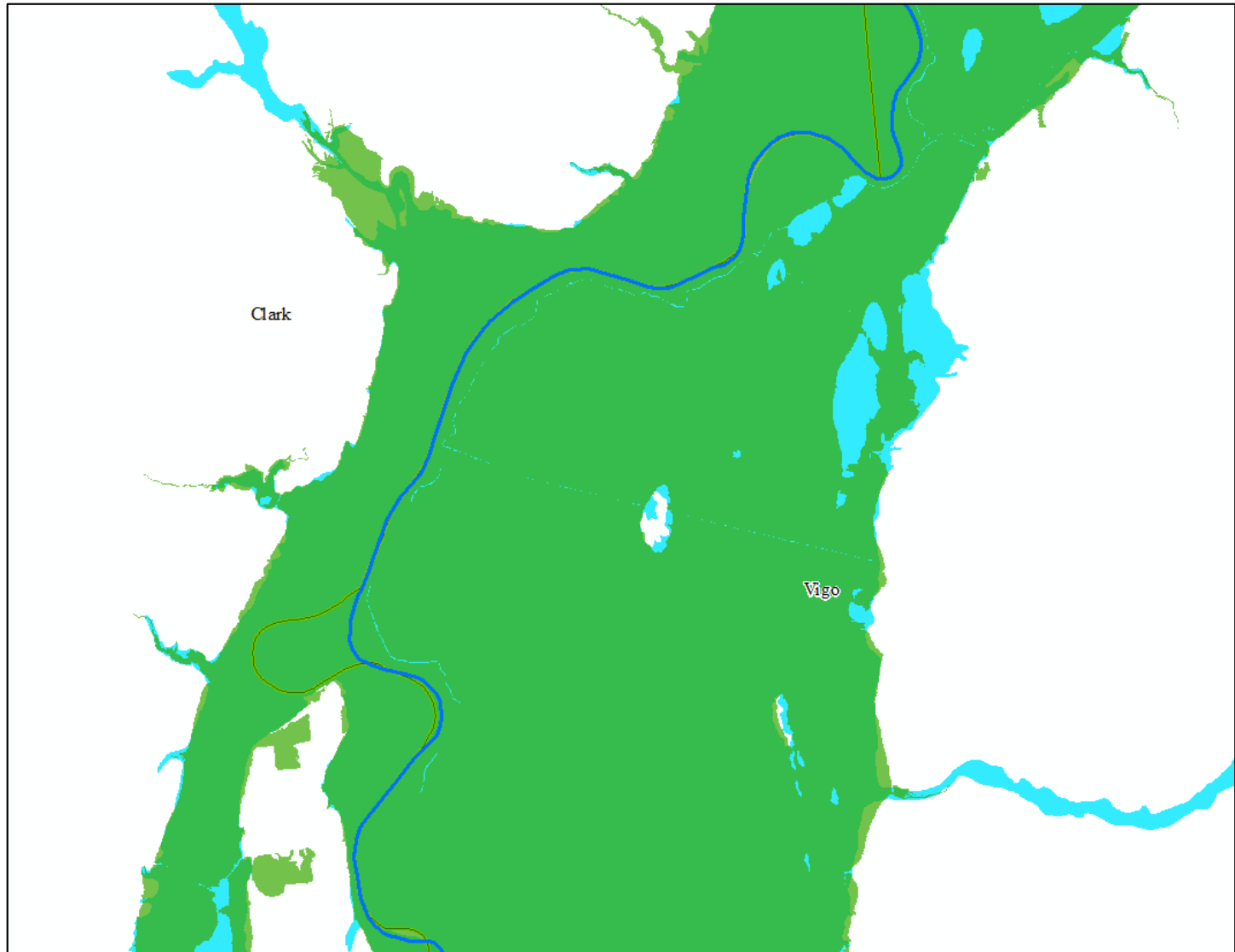
Floodplain Delineation Process



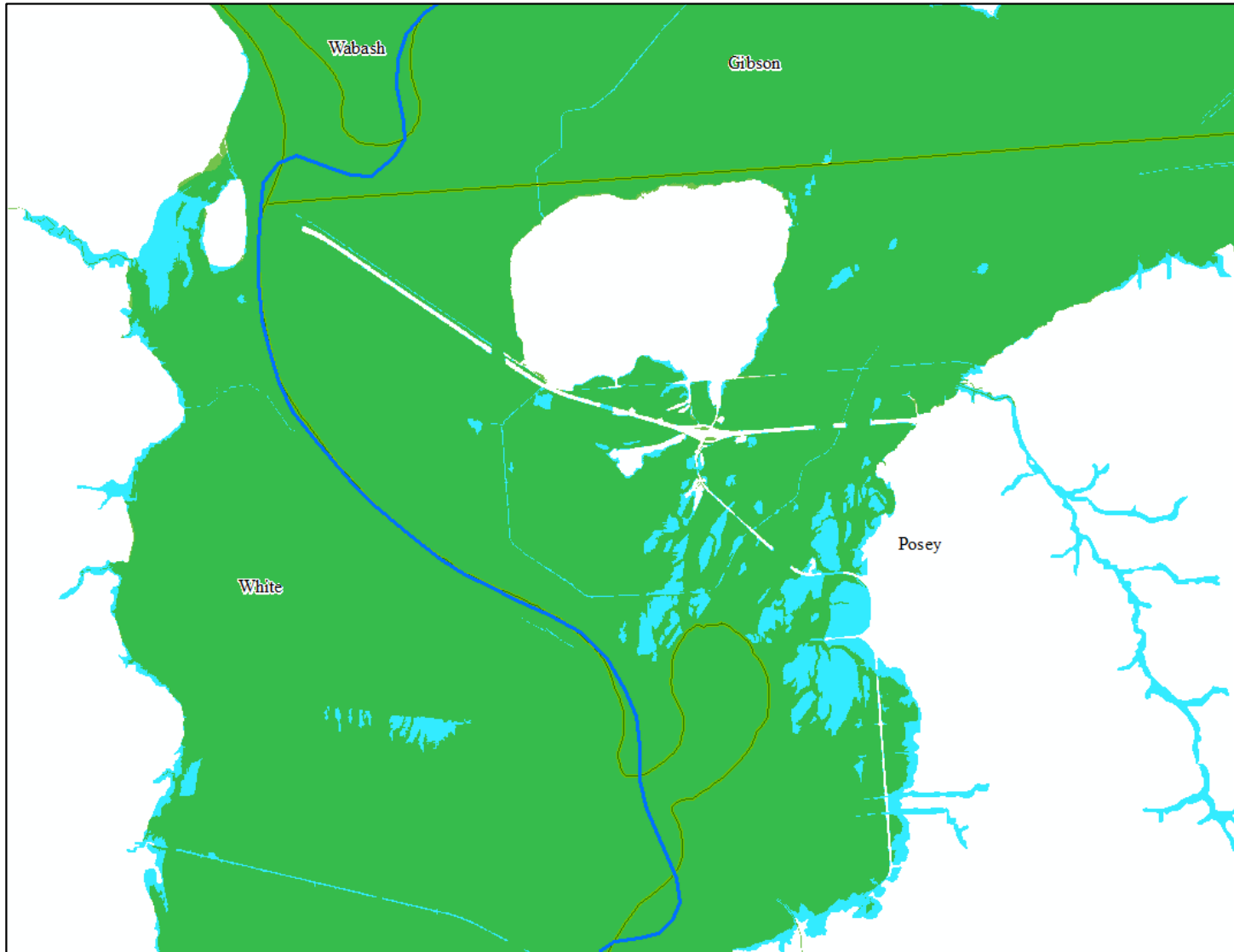
Floodplain Delineation Process



Floodplain Delineation Process



Floodplain Delineation Process



Questions?

Zoe Zaloudek, GISP, CFM
zaloudek@Illinois.edu

<https://www.illinoisfloodmaps.org>